

Section 1. Important Safety Instructions

READ AND FOLLOW ALL INSTRUCTIONS

All electrical work must be performed by a licensed electrician and conform to all national, state, and local codes. When installing and using this electrical equipment, basic safety precautions should always be followed, including the following:

⚠ WARNING

To reduce the risk of injury, do not permit children to use this product unless they are closely supervised at all times.

⚠ WARNING/SOCK HAZARD

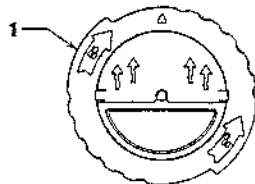
Follow all applicable electrical codes. Prior to installation or performing any service, turn off all switches and the main breaker in the pool/spa pump electrical circuit. Failure to comply may cause a shock or hazard resulting in severe personal injury or death. While disconnecting and/or connecting any electrical wiring, be careful not to damage or abrade any of the wiring.

Section 2. Getting Started

2.1 Package Contents

Before starting, check that you have the correct parts as indicated below. If any parts are missing or incorrect, please call your local distributor or Zodiac Pool Systems technical support at 1-800-822-7933 for assistance.

Item	Description	Qty.
1	Winterizing Cap	1

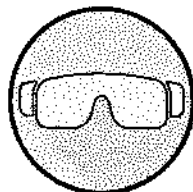


2.2 Required Equipment

Please ensure that the following equipment is available to the installer at the time of installation.



Gloves



Safety Eyewear

Installation

2.3 Remove Cell

1. Turn off all electrical power to the power pack at the breakers.
2. Ensure that the main filtration pump is off and will remain off for the duration of the procedure.
3. Turn the lock ring 1/4 turn counter clockwise. See Figure 1.
4. Lift cell assembly straight out of the housing. See Figure 2.
5. Disconnect the power cable from the power pack. See Figure 3.

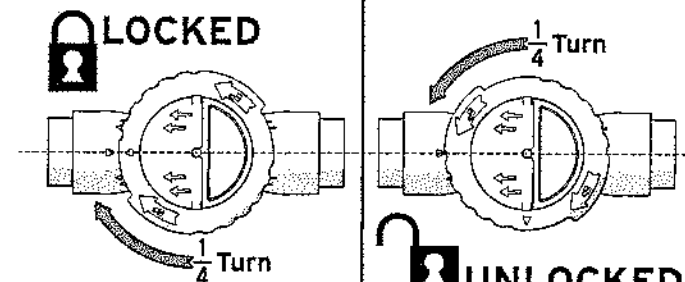


Figure 1. Operation of TruClear™ Lock Ring

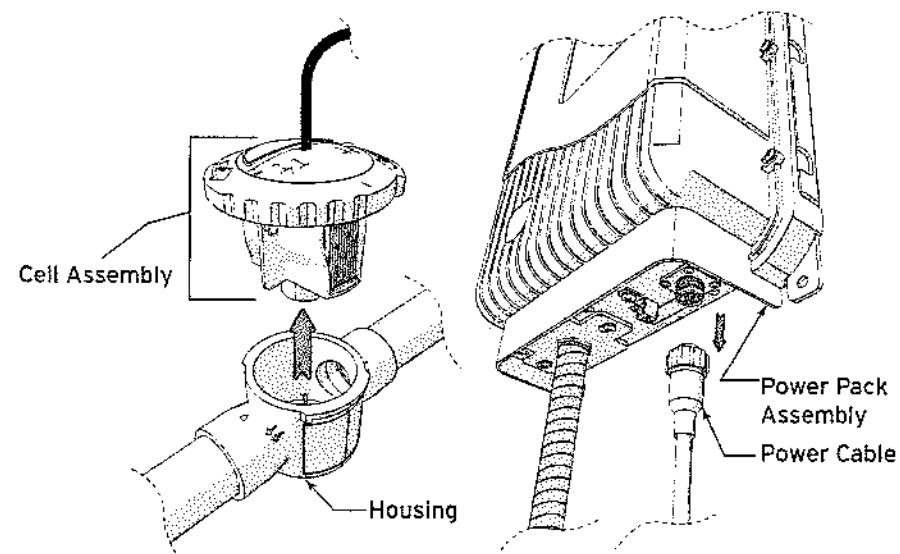


Figure 2. Remove Cell Assembly

Figure 3. Disconnect Power

6. Inspect cell plates for damage or wear and replace if necessary.
7. Inspect cell for corrosion and perform the cell cleaning procedure outlined in section 6.3 in the TruClear Installation and operation manual (H0470600).
8. Once cell is clean and dry store in a dry weather resistant location.

2.4 Install Winterization Cap

1. Place winterization cap straight down onto cell housing.
2. Turn the lock ring 1/4 turn clockwise to engage the lock. See figure 1.
3. The pool system can now be winterized normally.