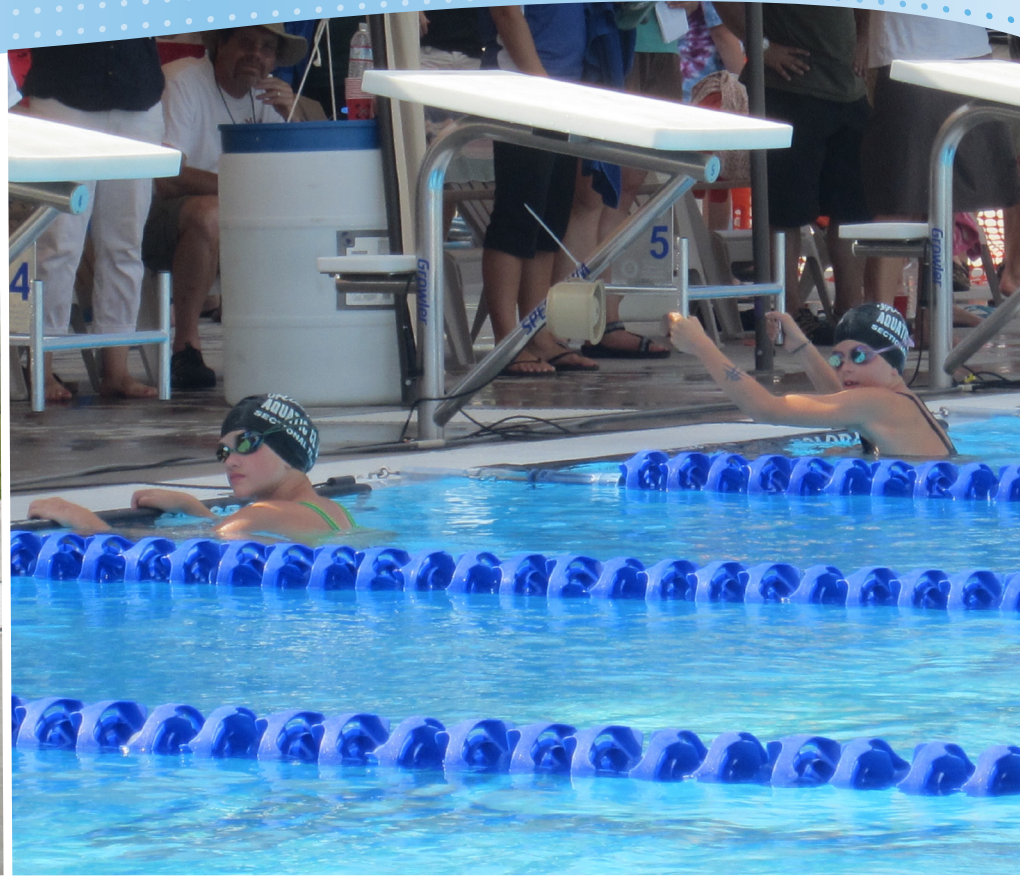


# ***STARTING PLATFORMS***

*Strength. Experience. Form.*



## STARTING BLOCK BENEFITS

Spectrum Aquatics® provides a selection of single and dual post starting platforms to accommodate any deck and gutter configuration for recreational and competition pools.

- Highest quality stainless steel
- Patented no-wobble anchoring system
- Flexibility in design – multiple platform tops, setback accommodations, and retrofit capabilities

SPECTRUM AQUATICS® STARTING PLATFORMS ARE:			
<b>Material Finish</b>	<ul style="list-style-type: none"> <li>• 600 grit stainless steel finish offers great corrosion resistance and ease of cleaning</li> </ul>		
<b>Frame Finish</b>	<ul style="list-style-type: none"> <li>• 304-L stainless steel, electropolished and passivated stainless steel coated with Spectra Shield™ for maximum corrosion resistance</li> <li>• Powder coating colors available</li> </ul>		
<b>Anchor</b>	<ul style="list-style-type: none"> <li>• Constructed of machined bronze - will not rust</li> <li>• Patented anti-wobble locator pinned design</li> <li>• Alignment slot design offers ease of installation and removal</li> <li>• No tools required</li> </ul>		
<b>Post and Frame Construction</b>	<ul style="list-style-type: none"> <li>• Single post round tubing with continuous bend and no welds for superior strength</li> <li>• Dual post options also available</li> <li>• Same stainless steel material as frame for maximum corrosion resistance</li> </ul>		
<b>Footboard</b>	<ul style="list-style-type: none"> <li>• Stainless steel tops with 3M non-slip material</li> <li>• Track style wedge is adjustable and removable for enhanced flexibility. Available for the Xcellerator, Record Breaker and Fusion</li> <li>• No visible hardware</li> </ul>	<ul style="list-style-type: none"> <li>• Rotationally molded tops made of low density, polyethylene for the Growler and Grizzly</li> <li>• No visible hardware</li> </ul>	
<b>Side Step</b>	<ul style="list-style-type: none"> <li>• Available and ideal for bulkhead applications</li> <li>• 3M non-slip surface</li> <li>• Easy mount</li> </ul>		
<b>Handles</b>	<ul style="list-style-type: none"> <li>• Stainless steel construction</li> <li>• Side handles enable fast take offs</li> <li>• 18" H bar design backstroke handles</li> </ul>		
<b>Top Dimensions</b>	32"x24" Fusion, Xcellerator and Record Breaker	32"x25" Growler, Cougar	23"x25" Grizzly, Bighorn
<b>Setback</b>	18"- 24"	18"- 35"	18"- 36"
<b>Compliance</b>	<ul style="list-style-type: none"> <li>• Compliant with FINA, USA Swimming, NCAA, and NFSHSA</li> </ul>		
<b>Other</b>	<ul style="list-style-type: none"> <li>• Compatible with leading timing systems</li> <li>• Custom colors and logos available</li> </ul>		

## STARTING BLOCKS



### FUSION

57281 FUSION BY SPECTRUM  
57572 FUSION TOP



### RECORD BREAKER

57283 SINGLE POST  
57741 DUAL POST



### XCELLERATOR

57282 SINGLE POST



### GRIZZLY

21655 REAR STEP  
21654 SIDE STEP



### GROWLER

21657 REAR STEP  
21653 SIDE STEP



### BIGHORN

21115 LONG REACH  
21095 STANDARD REACH



### COUGAR

21135 SIDE STEP  
21145 REAR STEP

## COVERS



### STARTING PLATFORM COVER

21400 SOFT STARTING PLATFORM COVER

## LOGOS



Xcellerator, Record Breaker and Fusion available with custom logo upgrades. Contact us for more information.

## ANCHORS



### DUAL POST ANCHOR ASSEMBLY

6" DEEP DUAL POST ANCHOR SET — 24070  
10" DEEP DUAL POST ANCHOR SET — 24071



### SINGLE POST ALIGNMENT TOOL

(NEW CONSTRUCTION) — 21705



SINGLE POST ANCHOR WITH STAINLESS STEEL COVER PLATE — 21700

## COLORS

Xcellerator, Record Breaker and Fusion come standard in black with custom color upgrades. The Growler, Grizzly, Cougar, and Bighorn are available in the below colors with white as standard.



Red

Blue

Green

Yellow



800.791.8056 | [sales@spectrumproducts.com](mailto:sales@spectrumproducts.com) | [spectrumaquatics.com](http://spectrumaquatics.com)  
7100 Spectrum Lane, Missoula, MT 59808

## ***WHY SPECTRUM AQUATICS®?***

### ***CUSTOMER SERVICE***

- Nation-wide field, engineering, and technical support
- Quick turn-around times

### ***Quality & Durability***

- Stainless steel construction
- Triple corrosion containment for harsh pool environments
  - o Manufactured with 100% USA made and melted stainless steel, in a 100% stainless steel environment
  - o Electropolished and passivated
  - o Coated with Spectra Shield®

### ***Performance***

- Anchors engineered to eliminate deflection
- Easy to install and remove
- No tools required

### ***Flexibility***

- Works with multiple deck configurations
- Accommodates setbacks ranging from 12" to 40" and a water draft up to 12"

