

# Model 433

## High Performance, High Head Pump



The Model 433 is a high head, medium flow workhorse, equipped with three phase motor.

### Features

- This high performance, high head pump comes complete with our unique mechanical shaft seal that allows the pump, if mistreated, to run dry for up to one hour.
- The pump can be used for pool water with a salt concentration of up to 5000 ppm.
- Non-corrosive, chemical/UV resistant, and can withstand temperatures of up to 175°F.
- Suction and discharge are reinforced with aluminum rings.
- For pool users' safety, the impeller has a dielectric shaft sleeve that provides absolute separation between pool water and electric parts.
- Lock ring that incorporates handles. These handles provide the user with a convenient way to easily remove the lid.
- Flooded suction models available.
- Motor is easy to remove without disturbing the plumbing. Reusable o-rings throughout.
- Every pump is performance tested before leaving the Speck factory.

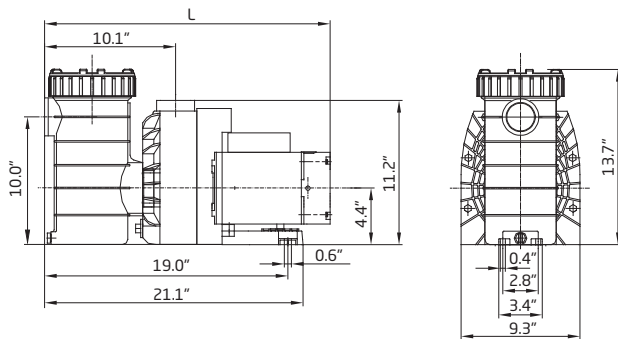


Model 433-V

### Trademarks and Certifications



### Dimensional Drawing



| MODEL   | DIMENSION "L" | SHIPPING WEIGHT |
|---------|---------------|-----------------|
| 433-I   | 24.8"         | 37 lbs.         |
| 433-II  | 24.8"         | 39 lbs.         |
| 433-III | 25.8"         | 40 lbs.         |
| 433-IV  | 26.0"         | 44 lbs.         |
| 433-V   | 26.3"         | 54 lbs.         |
| 433-VI  | 26.8"         | 56 lbs.         |

### Performance Curves

