

U-Frame Stand



Stand Color



POLISHED STEEL

Due to printing technology actual color may differ.

All installations must comply with all applicable local and national codes and installation must be completed in accordance with S.R.Smith installation instructions.

The U-Frame stand is a great entry-level stand, ideal for price-sensitive users.

- Made of 1.90" OD, .049" or .065" wall, 304 or 316L stainless steel tubing, and includes a slip-on rubber fulcrum
- Choose from a variety of board colors to match your pool slide and backyard décor
- Pair with 6', 8', 10' or 12' boards

Stand Model No.	Description	Pairs with Board Size	Shipping			
			Weight	Length	Width	Height
UF-12-100	12" U-Frame (.049)	6' or 8'	14 lbs 6kg	33" 84cm	25" 64cm	2" 5cm
UF-18-101	18" U-Frame (.049)	6' or 8'	16 lbs 7.2kg	33" 84cm	25" 64cm	2" 5cm
UF-18-102	18" U-Frame (.065)	6' or 8'	18 lbs 8.1kg	34" 86cm	31" 79cm	2" 5cm
UF-24-103	24" U-Frame (.049)	10' or 12'	16 lbs 7.2kg	34" 86cm	31" 79cm	2" 5cm
UF-24-102	24" U-Frame (.065)	10' or 12'	19 lbs 8.6kg	34" 86cm	31" 79cm	2" 5cm
66-209-4082	8' Frontier, board only, white					

Notes:

- For Marine Grade (316L), add -MG to part number
- Boards are sold separately
- * Not recommended for salt pools

Compatible with:



Fibre-Dive Board



Frontier III Board



Frontier IV Board* (8' only)

U-Frame with 8' Frontier IV Board*

The special Steel Meter Stand, designed specifically for our Frontier IV board, is a great alternative to consider for pools with heavy diving traffic and more athletic pool users.

- The Frontier IV board comes in an 8' length
- Mounting bolts are on 11" centers
- Frontier IV comes in white, with a matching non-slip sanded tread for maximum safety
- Made of 1.90"OD, .109 wall tubing, 304 or 316L stainless steel tubing
- 400 lb. weight limit

Stand Model No.	Description	Board Size	Shipping			
			Weight	Length	Width	Height
UF-15-200	U-Frame only	8'	21 lbs 9kg	33" 84cm	25" 64cm	2" 5cm
68-209-1582	U-Frame w/board	8'	2 boxes 201 lbs 91kg	98" 249cm	20" 51cm	3" 8cm
				45" 114cm	17" 43cm	14" 36cm
66-209-4082	Frontier IV Board (board only)					

Notes:

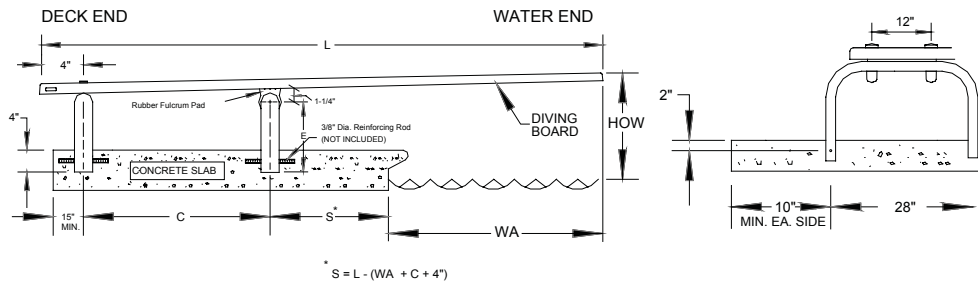
- Weight limit 400 lbs.
- * The Frontier IV board has 11" bolt centers and requires these SPECIAL U-Frames that will only work with this board

U-Frame Fulcrum Pad



FC-100A

- Heavy-duty rubber
- 20" long
- Accommodates 1.90" OD tubing



Thickness: 6" min
 Width: 4" min
 Note: S.R.Smith cannot guarantee customer's concrete strength or thickness

Installation Dimensions

Residential Pools

Pool Type	Diving Board	Fulcrum Setting (C)	Actual Length (L)*	Max. board over water (HOW)	Minimum Overhang (WA)	Recommended U-Frame
I	6'	30" ±3"	70-1/2"	20"	18"	UF-12-100 or UF-18-101 or UF-18-102
II	8'	40" ±4"	94-1/2"	20"	18"	
III	10'	52" ±5"	118-1/2"	26"	24"	UF-24-102 or UF-24-103
IV	10'	52" ±5"	118-1/2"	30"	30"	
V	12'	62" ±6"	142-1/2"	40"	36"	

* Add 1 1/2" to L dimension for Aluminum Diving Boards

Commercial Pools

Pool Type	Diving Board Length	Fulcrum Setting (C)	Actual Length (L)*	Max. board height over water (HOW)	Minimum Overhang (L1**)
VI	10'	52" ±5"	118-1/2"	26" (2/3 Meter)	30"
VII	12'	62" ±6"	142-1/2"	30" (3/4 Meter)	36"
VIII	16'	86" ±6"	190-1/2"	1 Meter	48"
IX	16'	86" ±6"	190-1/2"	3 Meter	72"

Notes:

* Add 1 1/2" to L dimension for Aluminum Diving Boards

** L1 dimension is valid only in conjunction with min. depth (D1) at point A for pool type

(See ANSI/NSPI-1 2003 Figure 1 and Table 2)

COMPLY WITH LOCAL GOVERNMENT REGULATIONS FOR PUBLIC SWIMMING POOLS

IF THEY EXCEED THE ANSI/NSPI-1 STANDARD