



# FRONTIER IV DIVING BOARD

Fiberglass



ASSEMBLY AND INSTALLATION INSTRUCTIONS

–PLEASE READ CAREFULLY–

## WARNING

POOL WATER ENVELOPE DIMENSIONS MUST MEET OR EXCEED ANSI/APSP/ICC-5 2011 STANDARDS FOR THIS BOARD. ALL WATER ENVELOPE DIMENSIONS FOR PUBLIC SWIMMING POOLS MUST MEET THE ANSI/APSP/ICC-1 2014 STANDARD FOR PUBLIC SWIMMING POOLS. USE ONLY WITH A COMPATIBLE S.R. SMITH DIVING BOARD STAND. S.R. SMITH DIVING BOARDS AND RELATED EQUIPMENT ARE FOR IN-GROUND POOLS ONLY. DO NOT USE WITH OTHER POOLS, DOCKS, ETC.

**USE WITH AN IMPROPERLY-SIZED POOL, INCOMPATIBLE STAND, OR IMPROPER INSTALLATION MAY RESULT IN DEATH OR SERIOUS INJURY.**

ATTENTION: THESE INSTRUCTIONS MUST REMAIN WITH PLATFORM OWNER

**\*\*PROFESSIONAL INSTALLATION RECOMMENDED. IMPROPER INSTALLATION VOIDS S.R. SMITH'S LIMITED PRODUCT WARRANTY\*\***

REGISTER YOUR S.R. SMITH PRODUCT AT

[www.srsmith.com/en/customer-service/product-registration](http://www.srsmith.com/en/customer-service/product-registration)

**SRS AUSTRALIA, PTY LTD**

12 Enterprise St  
Richlands QLD 4077  
Australia

Phone 07 3812 2283 • Fax 07 3812 1187  
[www.srsmith.com/au](http://www.srsmith.com/au)



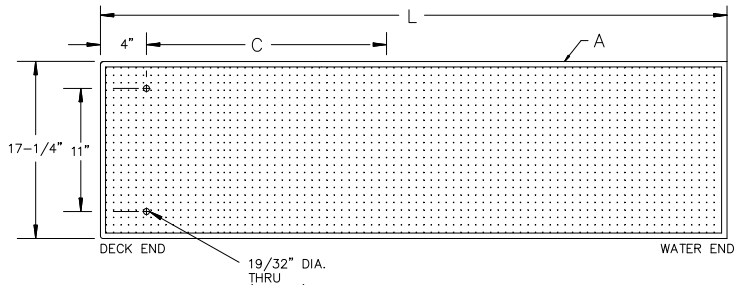
Visit [srsmith.com](http://srsmith.com) for information on the complete line of S.R.Smith pool products.

**S.R. SMITH, LLC**  
CORPORATE HEADQUARTERS  
P.O. Box 400 • 1017 S.W. Berg Parkway  
Canby, Oregon 97013  
USA  
Phone (503) 266 2231 • Fax (503) 266 4334  
[www.srsmith.com](http://www.srsmith.com)

**SEE REVERSE SIDE FOR INSTALLATION DIAGRAM AND INSTRUCTIONS.**

## FRONTIER IV • 8' DIVING BOARD

FIGURE A



**NOTICE:**  
S.R. SMITH CANNOT  
GUARANTEE CUSTOMER'S  
CONCRETE STRENGTH OR  
THICKNESS

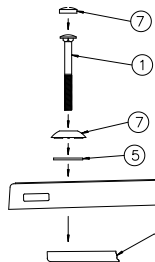


FIGURE B

**IMPORTANT NOTICE:**  
IT IS NECESSARY TO USE AN ANTI-SEIZE  
COMPOUND ON ALL STAINLESS STEEL  
HARDWARE. FAILURE TO USE ANTI-SEIZE  
COMPOUND MAY RESULT IN GALLING AND  
SEIZING OF THE HARDWARE.

### FRONTIER IV MOUNTING KIT (67-209-913-SS)

1. 1/2" X 5" CARRIAGE BOLT S/S (2 EA.)
2. 1/2" LOCK WASHER S/S (2 EA.)
3. 1/2" HEX NUT S/S (2 EA.)
4. 1/2" PLASTIC NUT CAP (2 EA.)
5. 1/2" X 2" BLACK RUBBER MOUNTING WASHER (4 EA.)
6. 1/2" X 2" FLAT WASHER S/S (2 EA.)
7. WHITE PLASTIC RECESSED MOUNTING WASHER ASSY' (2 EA.)

## INSTALLATION INSTRUCTIONS

CONCRETE DEPTH AROUND JIG MUST BE 6" THICK MINIMUM.

1. **RESIDENTIAL:** Verify that the pool water envelope dimensions meet or exceed ANSI/APSP/ICC-5 2011 standards for this board. Excerpt from the applicable ANSI/APSP/ICC-5 2011 standard are attached and more information on safe installation is available at [www.srsmith.com/](http://www.srsmith.com/). **Warning: using the diving board with an improperly-sized pool may result in death or serious injury.**
2. **COMMERCIAL:** Verify that the pool water envelope dimensions meet or exceed ANSI/APSP/ICC-1 2014 standards for this board. Excerpt from the applicable ANSI/APSP/ICC-1 2014 standard are attached and more information on safe installation is available at [www.srsmith.com/](http://www.srsmith.com/). **Warning: using the diving board with an improperly sized pool may result in death or serious injury.**
3. Verify that the board is compatible with the installed S.R. Smith diving board stand. A matrix of compatible products is attached and available at [www.srsmith.com/](http://www.srsmith.com/).
4. Verify that the diving board stand is properly and securely installed. **The concrete deck around the diving board stand must be 6" thick minimum.**

TABLE 1 – FULCRUM SETTING CHART

Refer to FIGURE A

Board A	Fulcrum Setting C	Actual Length L
8'	40" ± 4"	94-1/2"

5. The Rubber Fulcrum Pad MUST be used so as not to void S.R. Smith's warranty.
6. Tighten hex nuts between 20 and 25 ft-lbs for fiberglass boards. **DO NOT OVERTIGHTEN.**

**ONLY ONE PERSON ON DIVING PLATFORM AT A TIME  
WITH A MAXIMUM WEIGHT OF 400 LBS (181KG)**