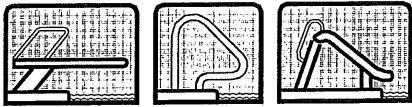
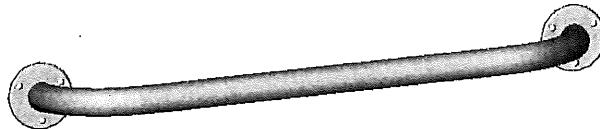


S.R. Smith, LLC



WESTERN SALES AND MANUFACTURING PLANT
CORPORATE HEADQUARTERS
1017 SW Berg Parkway
Canby, Oregon 97013
Phone: (503) 266-2231 • Fax: (503) 266-4334

EASTERN MANUFACTURING PLANT
105 Challenger Drive
Portland, Tennessee 37148



INSTALLATION INSTRUCTIONS

1. Use a 3/8" solid carbide tipped bit for drilling of holes. (Use only solid carbide tipped bits meeting the ANSI B94 tip diameter standard.) Do not use core bits.

2. Place the handrail in its proper location and orientation. Use the holes in the flange as a template for drill locations.
NOTE: The two holes in the flange face up as shown in FIGURE 1.

3. Drill holes perpendicular to the work surface to assure full holding power. Do not allow the drill to wobble.

4. Drill the holes at least 1-3/4" deep.

5. Clean the hole using compressed air and a wire brush. A clean hole is necessary for proper performance.

6. Assemble the flat washer and hex nut as shown in Figure 2. Make sure the flat washer is at least 3/4" from the anchor bolt head.

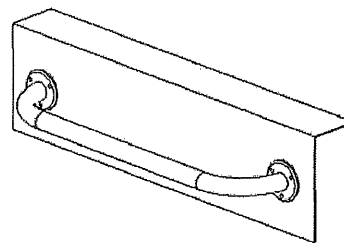


Figure 1

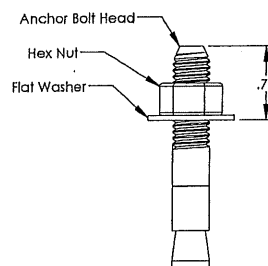


Figure 2

7. Tap the anchor into the hole with a hammer, making sure the nut and washer rest solidly against the concrete as shown in Figure 3.

8. Tighten the hex nut at least 3 full turns to set the anchor.

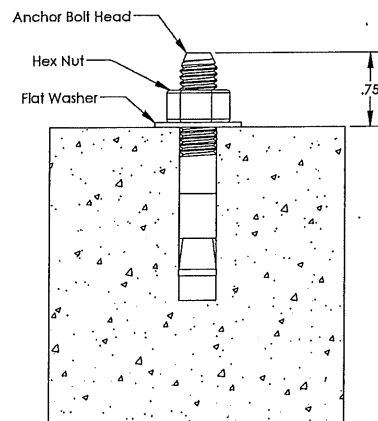


Figure 3

8. After installing anchor studs into the pool wall, seal around each anchor stud with a waterproof sealer.

9. Install the rail flange over the anchors and secure with acorn nuts as shown in Figure 4.

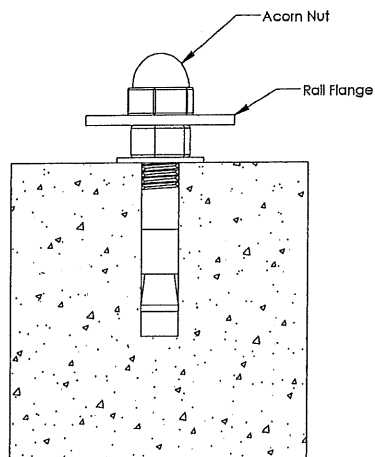
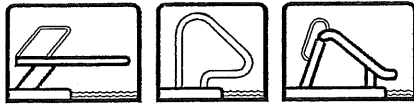


Figure 4

S.R. Smith Inc.™



P.O. BOX 400 1017 S.W. BERG PARKWAY
CANBY, OREGON 97013
PHONE: (503) 266-2231

ASSEMBLY: EB-100A 3' EXERCISE
BAR W/FLANGES

APPROVALS		DATE
PURCHASING:	Al Shelton	
ENGINEERING:	William Clausen	05JUN90
PRODUCTION:	Bernie Imholt	
QUALITY:	Larry Gilmour	26 JUL 90

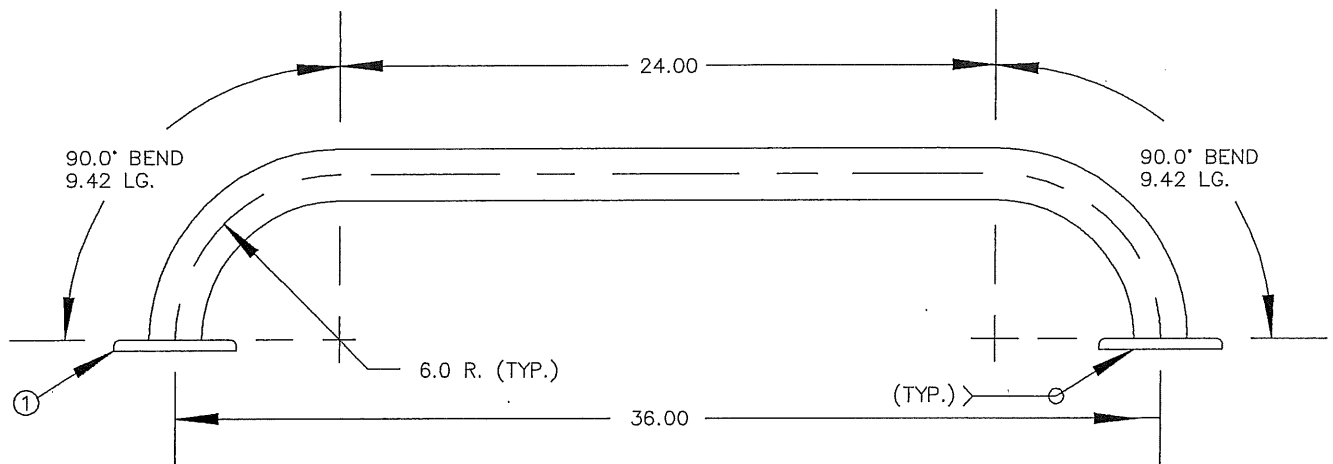
DO NOT SCALE DRAWING

PROPRIETARY NOTE: Designs and/or information shown on this drawing are proprietary. The recipient agrees not to reproduce or copy in whole or part nor to make any use of it that is or may be injurious to S. R. Smith Inc.

REV. DATE:

BORDER MAGNIFICATION X 6.5

BREAK & DEBURR ALL SHARP EDGES



00-322

Flange Anchor Stub Assembly

60718

5-194 3/8" x 2 1/4" A/S WASH/ nut 316 SS QTY 3

5-156 3/8-16" Allen nut 316 S/S QTY 3

TOTAL LENGTH OF RAIL: 42.84"

MATERIAL: 1.90" O.D. X 0.049 WALL

304 S/S TUBE W/ MIRROR FINISH

① 8-120 FLANGE, S/S, 1.90" (2 PLCS.)

DESCRIPTION:

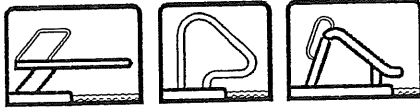
EB-100A 3' EXERCISE
BAR W/FLANGES

DRAWING NUMBER

DWG. #PBR
FOR 24MAY90

SPIN	SIZE	DISK NO.	FILE NO.	REV.	SHEET
EB-100A	A	1	731	A	1 OF 1

S.R. Smith Inc.



P.O. BOX 400 1017 S.W. BERG PARKWAY
CANBY, OREGON 97013
PHONE: (503) 266-2231

ASSEMBLY:

ANCHOR STUD

UNLESS OTHERWISE SPECIFIED
DIMENSIONS ARE IN INCHES,
TOLERANCES ARE:
DECIMALS: FRACTIONS:
.X ± ±
.XX ± ANGLES:
.XXX ± ±

	APPROVALS	DATE
PURCHASING:	Mark Kroeplin	
ENGINEERING:	William Clausen	21 Sep 94
PRODUCTION:	Bernie Imholt	
DRAFTING	Kevin Ball	20SEP94

SCALE: 1.00" = 1.00"

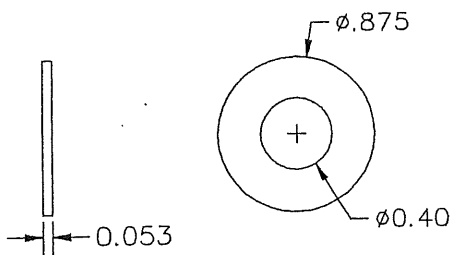
DO NOT SCALE DRAWING

PROPRIETARY NOTE: Designs and/or information shown on this drawing are proprietary. The recipient agrees not to reproduce or copy in whole or part nor to make any use of it that is or may be injurious to S. R. Smith Inc.

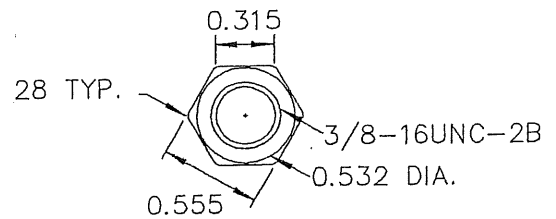
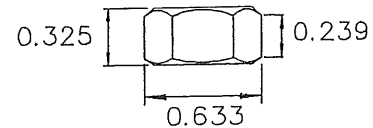
REV. DATE:

BORDER MAGNIFICATION X 1

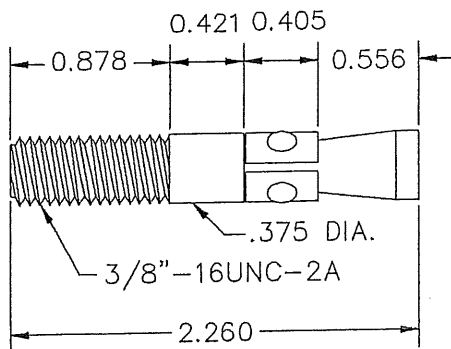
BREAK & DEBURR ALL SHARP EDGES



3/8" X 7/8" FLAT WASHER

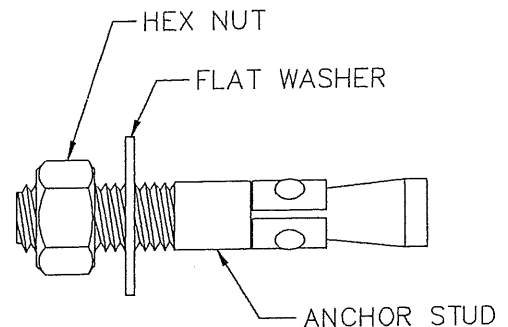


3/8"-16UNC HEX NUT



3/8" X 2-1/4" NOSE CONE ANCHOR STUD

*Use Hammer Drill
to install in concrete
Use taps on bit to
indicate how far you need to
drill.*



ANCHOR STUD ASSEMBLY

MATERIAL: 316 STAINLESS STEEL

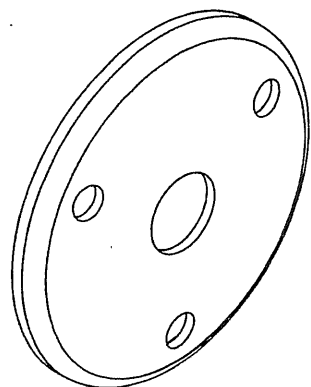
DESCRIPTION:

3/8" X 2-1/4" ANCHOR STUD
WASHER/NUT (316 S/S)

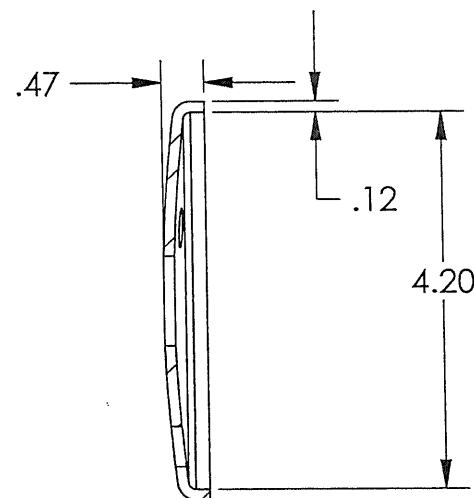
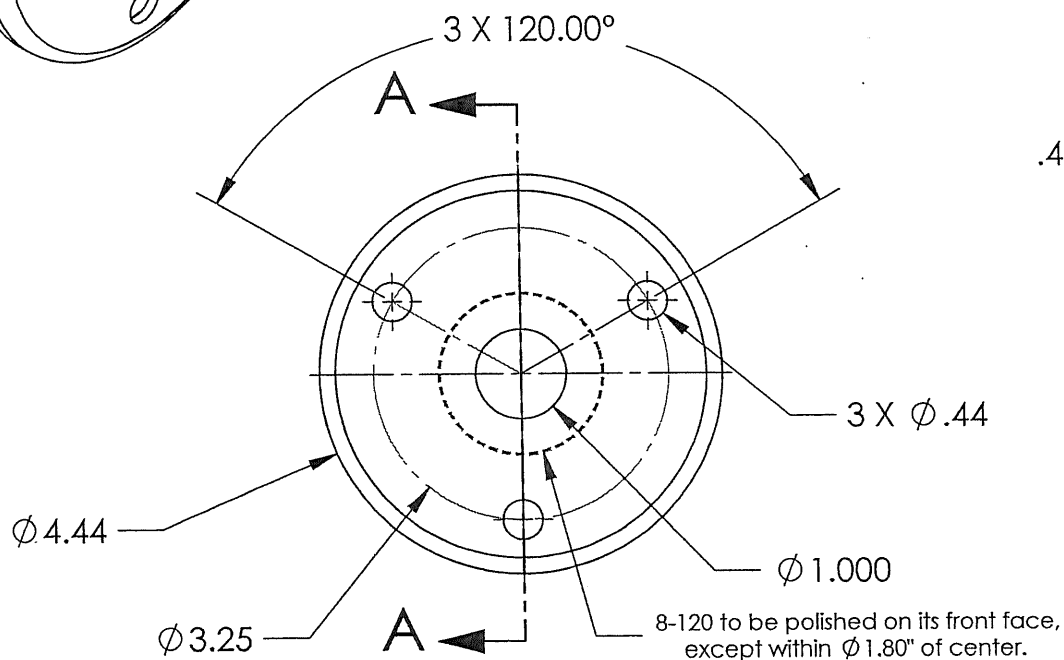
DRAWING NUMBER

DWG. #PBR
UPDATED BJUL94

SPIN	SIZE	DISK NO.	FILE NO.	REV.	SHEET
5-194	A	3	936	A	1 OF 1

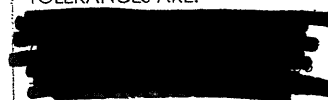


REVISIONS				
REV.	DESCRIPTION	DATE	Approved By:	ECN
A	UPDATED TO SOLID WORKS FORMAT	8/22/05		
B	CHANGED CENTER HOLE DIAMETER TO ϕ 1.00", WAS ϕ 1.92".	10/1/2009	BS	
B1	Polish location requirement	10/16/2009	OEH	408



SECTION A-A

UNLESS OTHERWISE SPECIFIED
DIMENSIONS ARE IN INCHES,
TOLERANCES ARE:



DESCRIPTION: FLANGE, S.S. 1.90"

MATERIAL: STAINLESS STEEL, TYPE 304

PART NO.: 8-120

REV. B

DRAWN BY: FKL

DATE: 8/22/05

CHECKED BY:

DATE:

S.R. Smith™

P.O. BOX 400 - 1017 S.W. BERG PARKWAY
CANBY, OREGON 97013
PHONE (503) 266-2231

PROPRIETY AND CONFIDENTIAL: THE INFORMATION CONTAINED IN THIS DRAWING IS THE SOLE PROPERTY OF S.R. SMITH LLC.
ANY REPRODUCTION IN PART OR AS A WHOLE WITHOUT THE WRITTEN PERMISSION OF S.R. SMITH LLC. IS PROHIBITED.

SIZE: A SCALE: 1:2 SHEET 1 OF 1