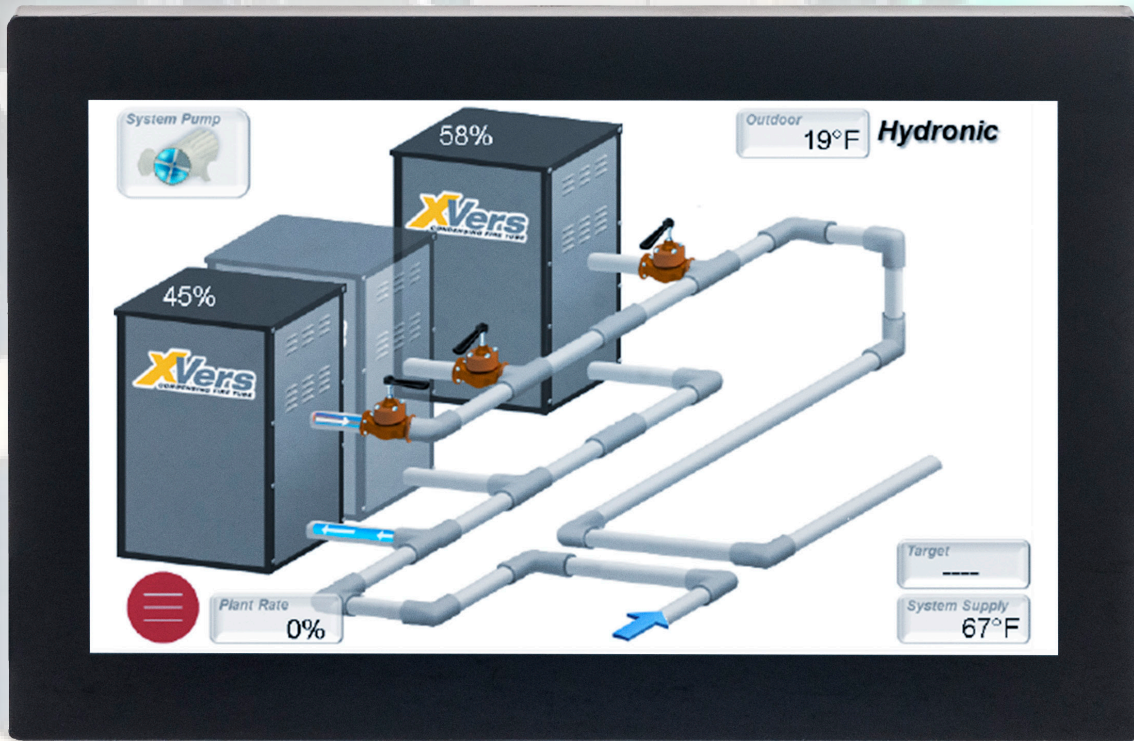


VERSATIC[®] TOUCHSCREEN QUICK START GUIDE



THE VERSA IC TOUCHSCREEN

Raypak's VERSA IC touchscreen is the very latest in high-performance, touchscreen displays. It features a high definition WVGA LCD display with a robust capacitive touch panel. The thick protective cover glass, along with the water resistant and glove-enabled touch panel, provides the rugged features required in today's equipment room. The Raypak touchscreen comes with onboard flash storage, allowing for fast rendering of high-resolution images as well as ample storage for monitoring and diagnostic data.

The VERSA IC Touchscreen Interface

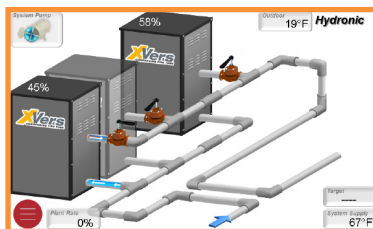
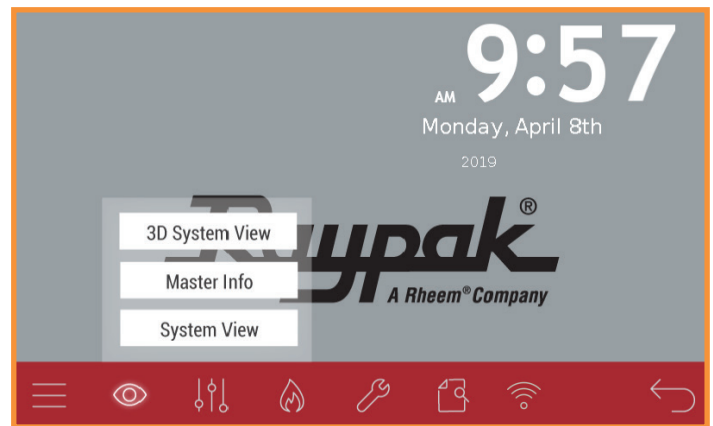
The touchscreen module has the same basic menu distribution as the original LCD display. When the menu button is pressed, the menu bar becomes visible at the bottom of the screen, allowing navigation to the following menus and items.

View Menu

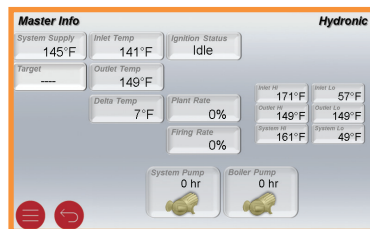
There are three selectable View screen types.

- 3D System View
- Master Info or Follower Info
- System View

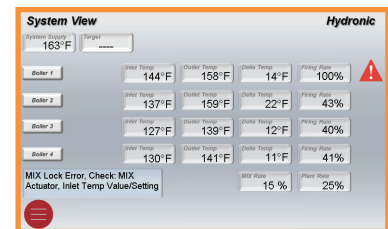
The 3D System View depicts a graphic representation of a typical boiler installation. The rest of the screens are focused on system data.



3D System View



Master Info



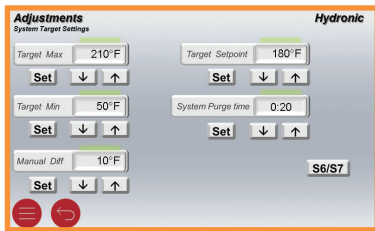
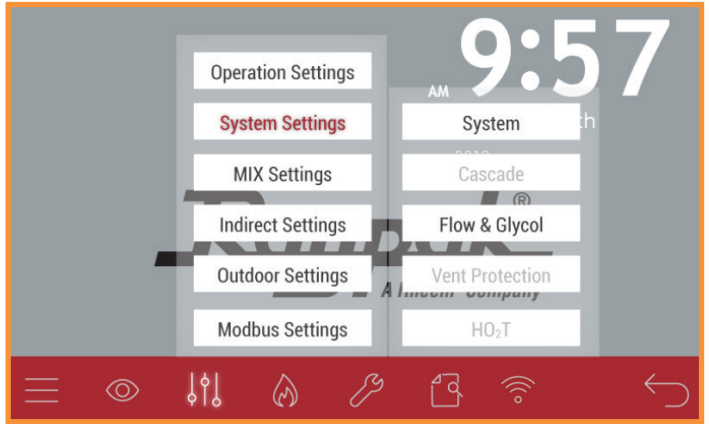
System View

Adjust Menu

The Adjust Menu includes many of the settable parameters. Each adjustable value has a small bar on top or beside the value; a green bar indicates a confirmation, while a red bar means that the value displayed is different from the actual saved value. If the SET button is not pressed within 5 seconds, the value will revert to the previous value.

Some of the sub-screens and/or parameters are dependent on unit configuration and product family.

- Operation Settings
- System Settings
 - System
 - Cascade
 - Flow and Glycol
 - Vent Protection
 - HO₂T (O₂ trim system, if equipped), refer to Catalog 5000.75 HO₂T Supplemental I&O for more information
- MIX Settings (Cold Water Protection)
- Indirect Settings
- Outdoor Settings
- Modbus Settings



System Settings



MIX Settings



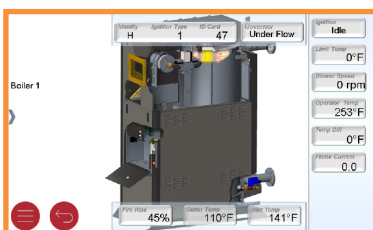
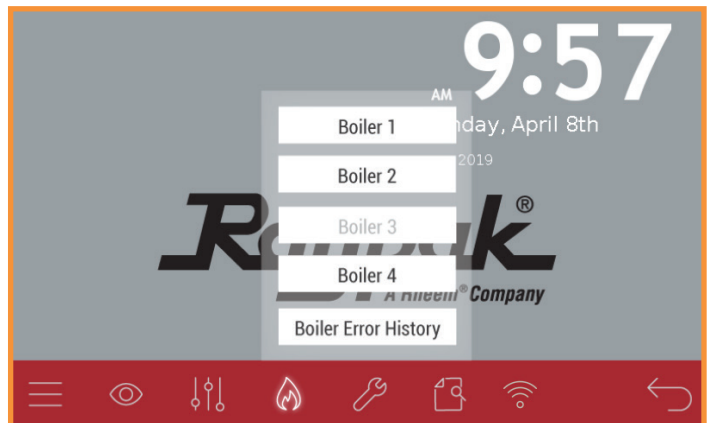
Outdoor Settings

Boiler Menu

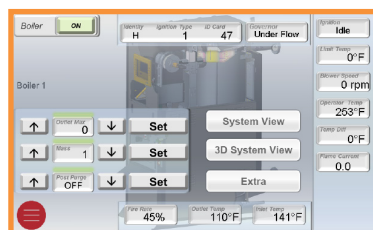
The Boiler Menu includes multiple data points and active errors.

Boiler Error History will keep track of the error events of the Master and Follower units present in the cascade. A time stamp will be associated to each error.

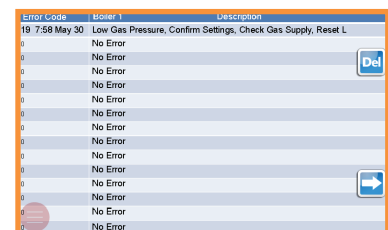
- Boiler 1 or Follower
- Boiler 2
- Boiler 3
- Boiler 4
- Boiler Error History



Boiler (Expanded View)



Boiler (Control View)

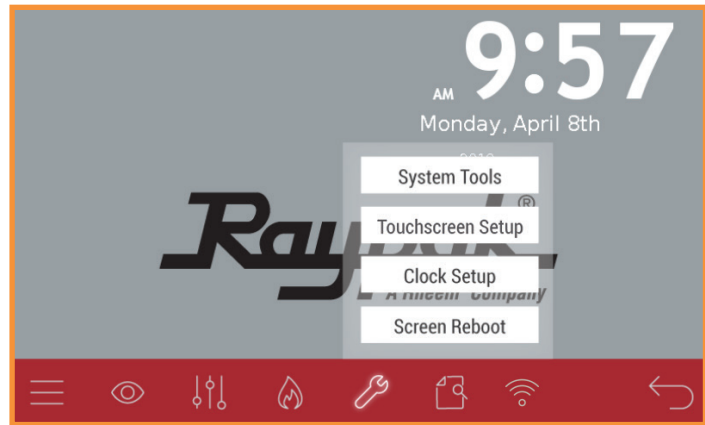


Boiler Error History

Tools Menu

Several touchscreen operation related items can be found in this Menu: screen dimming, screen time-out timer, temperature unit change, user test execution, touchscreen reboot, and return to default operation.

- System Tools
 - Monitor
 - Contact Info
- Touchscreen Settings
- Clock Setup
- Screen Reboot



Contact Info and Password

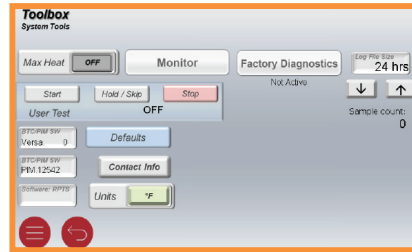
When commissioning the equipment, contact information for the equipment supplier or service company can be entered. To enter contact info:

1. Press the Contact Info button
2. Press Edit button
3. Enter default password “RAYPAKREP”
4. Edit information, use a comma to separate lines of text. No spaces necessary.
5. Press Enter button.

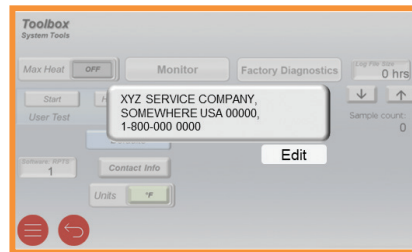
NOTE: When entering contact info, in lieu of the ENTER button, use a comma (,) to separate lines of text. No space necessary.

Example: XYZ Boiler Company,(800) XXX-XXXX

Appears as: XYZ Boiler Company,
(800) XXX-XXXX



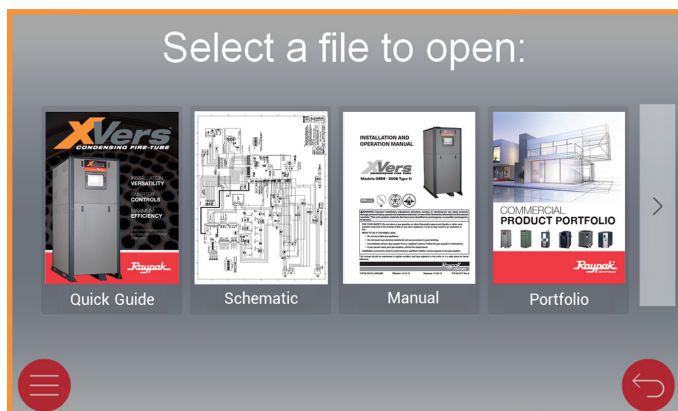
System Tools



Contact Info

Document Viewer

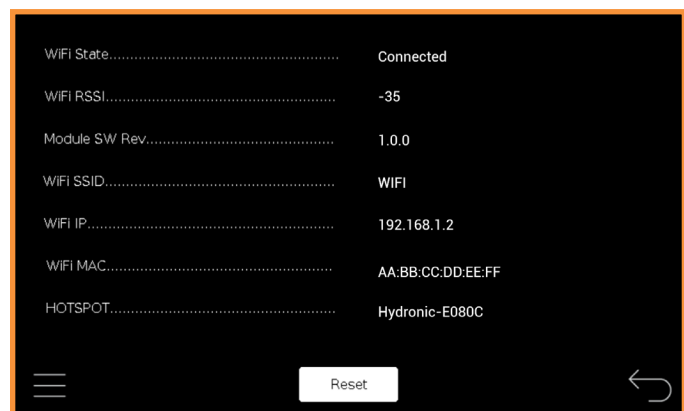
Provides easy access to documents factory loaded on the screen memory.



Document Viewer

Wi-Fi

Access Wi-Fi signal status information. (Refer to Catalog 5000.721 Raymote I&O for information on how to set-up Wi-Fi)



Wi-Fi Status

(MENU)



(VIEW)

- 3D System View
- Master / Follower Info
- System View



(ADJUST)

- Operation Settings
- System Settings
- MIX Settings
- Indirect Settings
- Outdoor Settings
- Modbus Settings



(BOILER)

- Master / Follower
- Boiler 2
- Boiler 3
- Boiler 4
- Boiler Error History



(TOOLS)

- System Tools
- Touchscreen Setup
- Clock Setup
- Screen Reboot



(DOCUMENT VIEWER)



(WI-FI)

H

- Mode
- Outdoor Enable

H

- System
- Cascade
- Flow & Glycol
- Vent Protection
- HO₂T

H - WH - P

- MIX Type
- MIX Target
- MIX Lock
- MIX Speed
- MIX Invert
- MIX Trim

- Max Heat Enable
- User Test
- Defaults
- Contact Info
- VERSA / PIM Software Rev
- °C / °F Selection
- Monitor
- Factory Diagnostics Log

- Brightness
- Dimmer Timeout
- Page Timeout

MODEL TYPE

	H		P
	WH		H - WH - P

