

TUFFCOAT[®]

RUBBERIZED NON-SKID COATINGS



**EXCELLENT FOR CONCRETE, FIBERGLASS, WOOD,
METAL SUBSTRATES & PREVIOUSLY PAINTED SURFACES**

APPLY BY ROLLER OR SPRAY • CHEMICAL & UV RESISTANT

WATER-BASED, DURABLE, FLEXIBLE

RUBBERIZED NON-SKID COATINGS

Tuff Coat is a single-component, flexible, water-based, non-skid coating created through a unique process of cross-linking urethanes, acrylics, co-polymers, and recycled rubber granules to create a long-lasting, non-slip finish. This product can be applied by a Tuff Coat textured roller, low-pressure hopper spray gun, or commercial texture sprayer.

UT-100 SERIES - NON-SUBMERSIBLE, SMOOTH AND MEDIUM TEXTURES



This non-submersible product is designed to provide an attractive, durable, impact-resistant, non-slip surface for pool decks, ramps, locker rooms, kitchens, foot bridges, stairs, natatoriums, laundry rooms, hallways, and other areas requiring slip resistance that will not be submerged.

ALSO AVAILABLE IN CUSTOM COLORS.

UT-200 SERIES - SUBMERSIBLE, MEDIUM TEXTURE



This fully submersible product is designed to provide an attractive, highly durable, impact-resistant, non-slip surface for splash pads, kiddie, catch, and wave pools, spray parks, restroom floors, deck surfaces, and other areas requiring slip resistance that can be used in or out of water.

ALSO AVAILABLE IN CUSTOM COLORS.

UT-300 - COMMERCIAL GRADE, COARSE TEXTURE



This commercial grade product is designed to provide an extremely durable, impact-resistant, non-slip surface for heavy-duty industrial applications such as loading docks, ramps, refineries, and other areas requiring extreme slip resistance that can be used in or out of a wet environment.

ALSO AVAILABLE IN CUSTOM COLORS.

PREP AND APPLICATION



TUFF COAT TEXTURED ROLLERS

Tuff Coat non-skid coatings must be applied by Tuff Coat rollers.

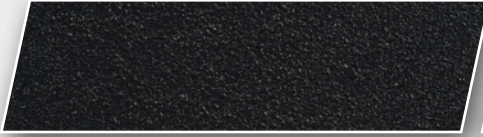
P9001 - 9"

P4002 - 4" (Twin Pack)

TUFF COAT CLEANER & DEGREASER UT-15

This product should be used to clean the surface prior to priming or painting.

AVAILABLE COLORS



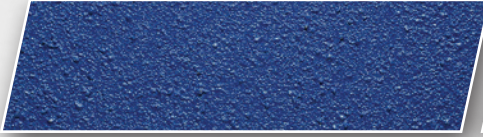
BLACK UT-101 / UT-201



BRICK RED UT-102



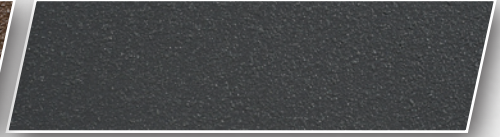
CARIBBEAN BLUE UT-103 / UT-203



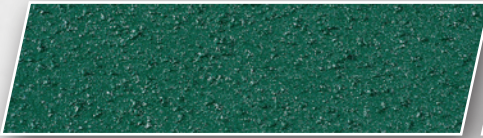
DARK BLUE UT-104 / UT-204



DARK BROWN UT-105



DARK GRAY UT-106 / UT-206



DARK GREEN UT-107



GREEN UT-108 / UT-208



KEY WEST SAND UT-109 / UT-209 / UT-109ST



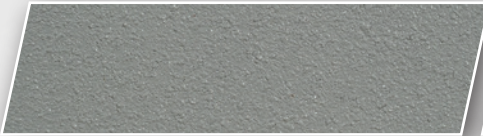
LIGHT BLUE UT-110



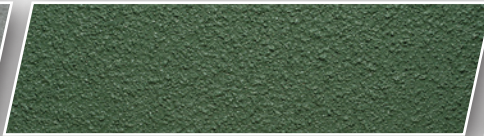
LIGHT GRAY UT-111 / UT-211 / UT-111ST



MEDIUM BLUE UT-112 / UT-212



MEDIUM GRAY UT-113 / UT-213



OLIVE UT-114



RED UT-115



SAND UT-116 / UT-216 / UT-116ST



TAN UT-117 / UT-217



WATERPARK BLUE UT-118 / UT-218



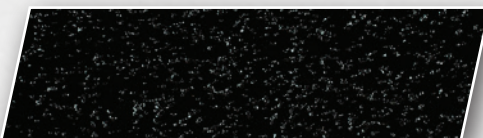
WHITE UT-119 / UT-219 / UT-119ST



SAFETY ORANGE UT-220



SAFETY YELLOW UT-221



BLACK UT-301

NOTE: ALL COLOR SWATCHES SHOWN IN THIS BROCHURE ARE APPROXIMATIONS OF THE ACTUAL PRODUCT COLOR IN THE CAN.

FOR MORE INFORMATION
877.252.9457 / TUFFCOAT.NET

PRIMERS

UT-80 ADHESION PRIMER



UT-80 ADHESION PRIMER is a two-component, water-based, epoxy primer/sealer that can be used on concrete, wood, fiberglass, and painted surfaces to promote adhesion between the substrate and Tuff Coat. UT-80 Adhesion Primer can be applied to damp concrete surfaces following proper application procedures. UT-80 Adhesion Primer is compatible with all Tuff Coat rubberized non-skid coatings.

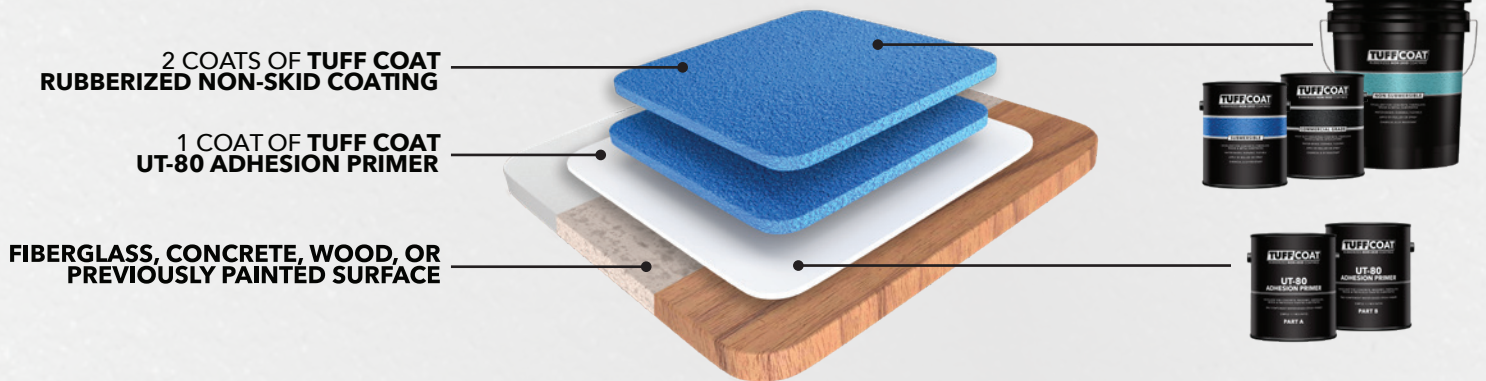
UT-95 METAL PRIMER



UT-95 METAL PRIMER is a fast-drying, single-component, water-based, corrosion-inhibiting primer that's designed for use on interior and exterior metal applications, that is compatible with Tuff Coat rubberized non-skid coatings. The product chemically etches for a tighter bond on clean, bare steel, or aluminum surfaces.

APPLICATION GUIDES

FIBERGLASS, CONCRETE, WOOD & PREVIOUSLY PAINTED SURFACES



METAL

