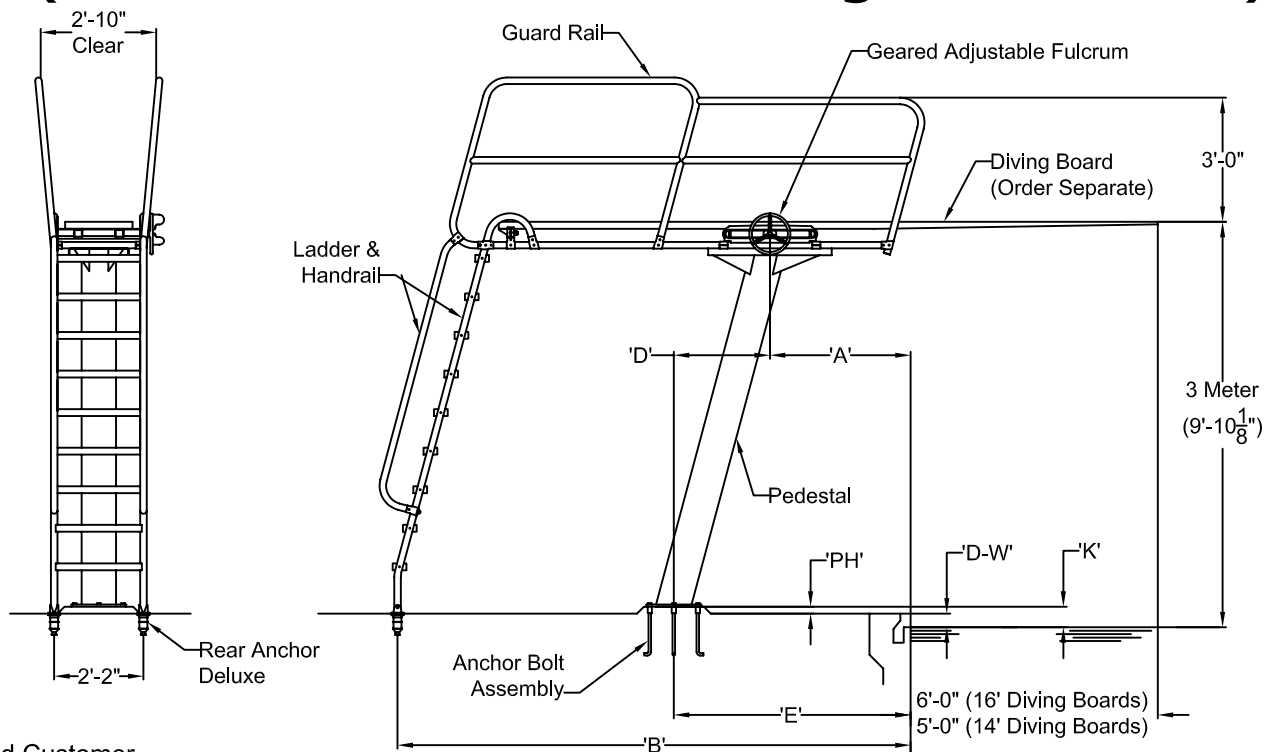


Assembly Instructions Three Meter Paraflyte Diving Tower (Ladder at Rear with Flanged Pedestal)

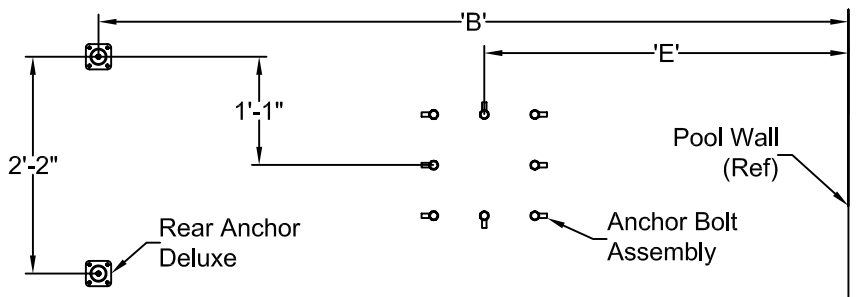


Dear Valued Customer,
 Thank you for your recent purchase of our 3 Meter Paraflyte diving tower with ladder at rear. The following instructions will assist you in the assembly of your tower. Page one of this document provides a side and rear view of how your tower will look when assembled and also gives anchor locations. Page two is an isometric 3-dimensional drawing which will aid in parts identification as well as parts locations. Page three provides step by step written instructions on how to assemble the tower. We trust that you will enjoy much satisfaction with the equipment you have purchased, and thank you for choosing Paragon deck equipment!

'K' DIMENSION	DECK TO WATER ('D-W')	PAD HEIGHT ('PH')	PEDESTAL HEIGHT	'D' DIMENSION
6"	0"	6"	104 3/8"	28"
6"	1"	5"	104 3/8"	28"
6"	2"	4"	104 3/8"	28"
6"	3"	3"	104 3/8"	28"
6"	4"	2"	104 3/8"	28"
6"	5"	1"	104 3/8"	28"
6"	6"	0"	104 3/8"	28"
12"	7"	5"	98 3/8"	26 3/8"
12"	8"	4"	98 3/8"	26 3/8"
12"	9"	3"	98 3/8"	26 3/8"
12"	10"	2"	98 3/8"	26 3/8"
12"	11"	1"	98 3/8"	26 3/8"
12"	12"	0"	98 3/8"	26 3/8"
>12"	Custom - Call for Details			

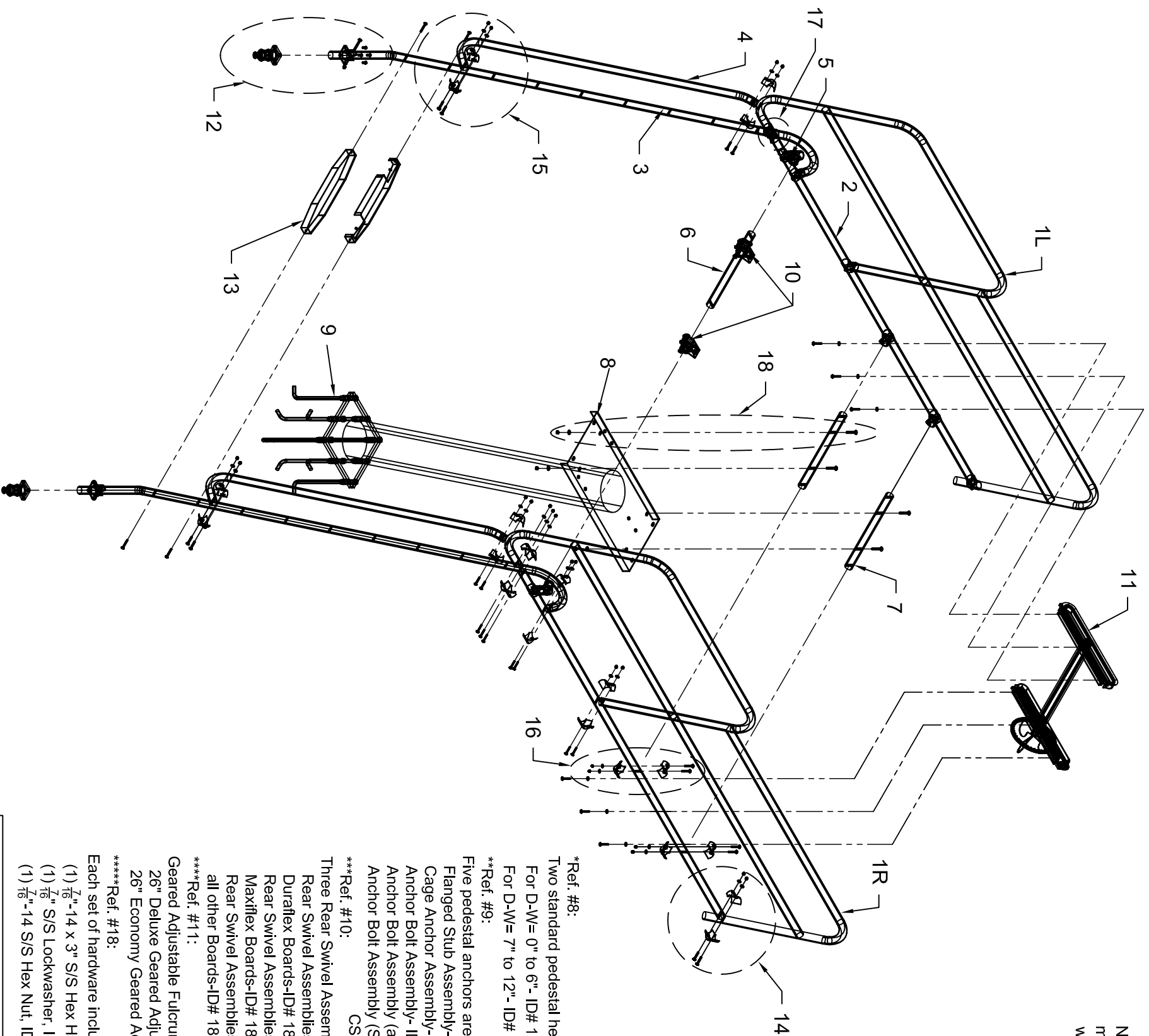
BOARD TYPE	'B' DIMENSION	'A' DIMENSION	Notes:
16' MAXIFLEX	12'-5 1/2"	45"	'B' Dimension = Pool wall to center line of rear anchor deluxe
16' DURAFLEX	12'-5 1/2"	41"	
16' CENTURY	12'-7 1/2"	30"	'A' Dimension = Pool wall to center line of top of pedestal
16' PARAFLEX	12'-6 3/8"	30"	
14' DURAFLEX	11'-5 1/2"	45"	'E' Dimension = 'A' + 'D'
14' CENTURY	11'-7 1/2"	30"	
14' PARAFLEX	11'-6 3/8"	30"	

Notes:
 'K' Dimension = Top of pad to water line ('PH' + 'D-W')
 'D' Dimension = Center line of top of pedestal to center line of bottom of pedestal (horizontal distance)

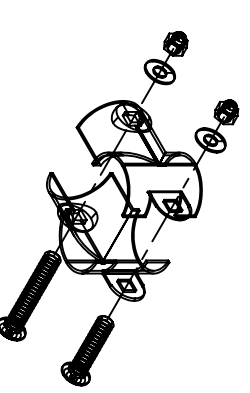


Supersedes Assembly Instructions Dated 4/95.

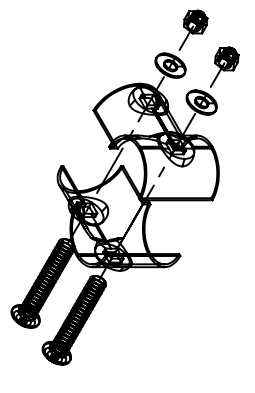
Note: Some tee assemblies (Ref. #s 14-17) may be pre-assembled mechanically and/or welded to superstructure at factory.



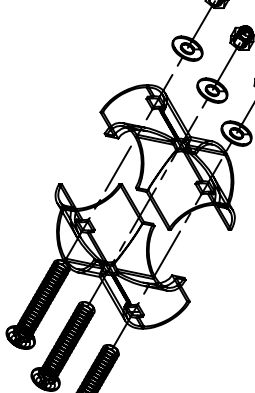
Angle Tee Assembly (Ref. #14)



Clamp Tee Assembly (Ref. #15)



Split Tee Assembly (Ref. #16)



Cross Angle Tee Assembly (Ref. #17)

*Ref. #8:
Two standard pedestal heights are available:
For D-W= 0" to 6"- ID# 12320, 104 $\frac{3}{8}$ " high pedestal
For D-W= 7" to 12"- ID# 12321, 98 $\frac{3}{8}$ " high pedestal

**Ref. #9:
Five pedestal anchors are available:
Flanged Stub Assembly- ID# 12301
Cage Anchor Assembly- ID# 12304
Anchor Bolt Assembly- ID# 12307
Anchor Bolt Assembly (all S/S)- ID# 12308
Anchor Bolt Assembly (S/S bushings & HW w/ CS 'J' bolts)- ID# 12309

***Ref. #10:
Three Rear Swivel Assemblies are available:
Rear Swivel Assemblies for use with Duraflex Boards-ID# 18401
Rear Swivel Assemblies for use with Maxiflex Boards-ID# 18402
Rear Swivel Assemblies for use with all other Boards-ID# 18403

****Ref. #11:
Geared Adjustable Fulcrums available:
26" Deluxe Geared Adjustable Fulcrum-ID# 24101
26" Economy Geared Adjustable Fulcrum-ID# 24106

*****Ref. #18:
Each set of hardware includes:
(1) $\frac{7}{16}$ "-14 x 3" S/S Hex Head Bolt, ID# 94604
(1) $\frac{7}{16}$ " S/S Lockwasher, ID# 94660
(1) $\frac{7}{16}$ "-14 S/S Hex Nut, ID# 94650

Suffix X= U: Ultraflyte (.145) / S: Superflyte (.109) / T: Topflyte (.065)
(Specify Board Type and Length when ordering REF #2)

REF #	DESCRIPTION	QTY	PART #
1L	Guard Rail Side Frame- Left hand side	1	13009LX
1R	Guard Rail Side Frame- Right hand side	1	13009RX
2	Fulcrum Support Bar	2	13012
3	Ladder Riser	2	13003X
4	Hand Rail	2	13010X
5	Rear Swivel Back Support Bar, Support Stub	2	13007
6	Rear Swivel Back Support Bar	1	13001
7	Pedestal Cross Bar	2	13004
8	Pedestal	1	*
9	Pedestal Anchor	1	**
10	Rear Swivel Assembly (with sliding collars)	1	***
11	Gear Adjustable Fulcrum	1	****
12	Rear Anchor Deluxe	2	28201
13	26" ABS Sloping Step (with hardware)	9	44109
14	Angle Tee Assembly (with hardware)	6	12507
15	Clamp Tee Assembly (with hardware)	2	12503
16	Split Tee Assembly (with hardware)	10	12501
17	Cross Angle Tee Assembly (with hardware)	2	12505
18	Superstructure to Pedestal Mounting Hardware	4 sets	*****

This data represents the latest knowledge available to us at time of presentation. However Paragon Aquatics and others involved in gathering and presenting this drawing assume no liability for its use.

PARAGON AQUATICS
Commercial Pool & Aquatics

1351 Route 55
LaGrangeville, New York
12540
Phone: 845-463-7200
Fax: 845-463-7291
www.paragonaquatics.com

Dwn by:	Date:	Title:	Material:
RV	1/14/11	3 Meter Paraflyte Diving Tower, Ladder At Rear, Flanged Pedestal Assembly Drawing	See Notes/Schedule
App by:	Date:	Drawing Number:	Scale: Rev Ltr: Sheet:
JMM	1/14/11	AI-DT10.05	N/A N/A B 2 of 3

3 METER PARAFLYTE DIVING TOWER (LADDER @ REAR) FLANGED PEDESTAL ASSEMBLY INSTRUCTIONS:


General Notes: Your 3 Meter Paraflyte diving tower has been shipped with some parts (Side Frames, Rear Frame) pre-assembled at our factory. Prior to beginning, please inspect all pieces and boxes to ensure that parts were not damaged in transit. If damage is detected, notify your distributor/freight carrier immediately as a freight claim **must** be filed within a certain time frame from receipt of goods. Take a moment to review the front pages of this assembly drawing to familiarize yourself with the tower components and to verify all parts have been received. You'll notice that certain pieces are unique and will be depicted as left or right hand side (as viewed facing the pool from behind the tower). By reviewing the data sheets and by insuring that the open end of the T-connectors are facing each other, you can identify the left and right sides.

Assembly Instructions:

1. Bolt the pedestal (ref. #8) to the pedestal anchor (ref. #9) with the (8) 3/4" x 2" hex head bolts and 3/4" lockwashers. Check pedestal cap for level and alignment, and tighten bolts securely. - *Note: Assembly and erection of the tower should be done in sequence and all bolted connections should be hand tight until directed otherwise.*
2. The ladder risers (ref. #3) usually have to be trimmed so that the side frames will be level after erection. Take a vertical measurement from the top of the pedestal to the top of the body of each rear anchor (ref. #12). Deduct the measured amount from 110 3/8" The difference is the amount to be trimmed from the bottom of each ladder riser. Trim the legs accordingly.
3. Lay the "Right Side" frame (ref. #1R) on the ground with all hex nuts facing upward. Attach one of the ladder risers to the side frame.
4. Attach a pedestal cross bar (ref. #7, 24" long with four parallel holes) to the forward open connector on the bottom rail. Remove the middle open connector.
5. Repeat the previous two steps on the "Left Side" frame (ref. #1L), with the exception that the pedestal support bar is attached to the middle open connector. Remove the forward, open connector.
6. Slip the flange portion of the rear anchor over the bottom of each ladder riser.
7. Raise the "Right Side" frame into position with the bottom of the ladder riser in the rear socket and the pedestal support bar resting on the pedestal cap. Attach the support bar with two 7/16" X 2 1/2" hex head bolts.
8. Repeat the previous step the "Left Side" frame. *Note - the pedestal support bars are 27" on center. They will engage the inner pair of slotted holes on the pedestal cap.*
9. Replace the split connectors, removed in steps 4 & 5, to make up the additional connections between the support bars and side frames.
10. Attach the rear swivel support bar and assembly (ref. #6 & 10). The projecting portions of the swivels should face forward, for all diving boards except Duraflex and Maxiflex. For these two boards, the base bar assembly should be attached with the projecting portions facing rearwards.
11. Attach the steps (ref. #13) to the ladder risers. Use the curved head bolts and install washers under the nuts. Do not over tighten the nuts as this may damage the steps. *Note - If the trimming of the ladder risers has caused the bottom step to be less than 3" from the deck it may be omitted.*
12. The ladder risers must be drilled for attachment of the flanges. Attach the flange to the anchor body with four 3/8" X 5/8" hex head bolts. Drill through the flange and the ladder riser with a 13/32" drill bit. Bolt the flange with one 3/8" x 3" hex head bolt. *Note - drilling through stainless steel will require a slow speed drill and constant feed pressure.*
13. Attach the hand rails (ref. #4).
14. All connections, which were hand tight, should now be securely tightened by wrench.
15. Attach one gear holder to the "Left Side" frame. Use three 3/8" X 2 1/2" hex head bolts.
16. Set the other gear holder on the "Right Side" frame, without attaching it.
17. Set the axle assembly in position on both straight gears. (Caution - be sure the axle assembly is square to the straight gears). Then attach the gear holder to the "Right Side" frame.
18. Set the hand wheel over the end of the axle and attach it by means of the 5/16" drive pin.
19. Paint the primed pedestal.

CAUTION: All bolts should be checked regularly and tightened when necessary.

Supersedes Assembly Instructions Dated 4/95.

 <p>PARAGON AQUATICS Pental Water Commerical Pool & Aquatics</p>	<p>1351 Route 55 LaGrangeville, New York 12540 Phone: 845-463-7200 Fax: 845-463-7291 www.paragonaquatics.com</p>	Dwn by: Date: RV 1/14/11		Title: 3 Meter Paraflyte Diving Tower, Ladder At Rear, Flanged Pedestal Assembly Drawing		Material: See Notes/Schedule	
		App by: Date: JMM 1/14/11		Drawing Number: AI-DT10.05		Tolerance: (Unless noted) N/A	Scale: N/A