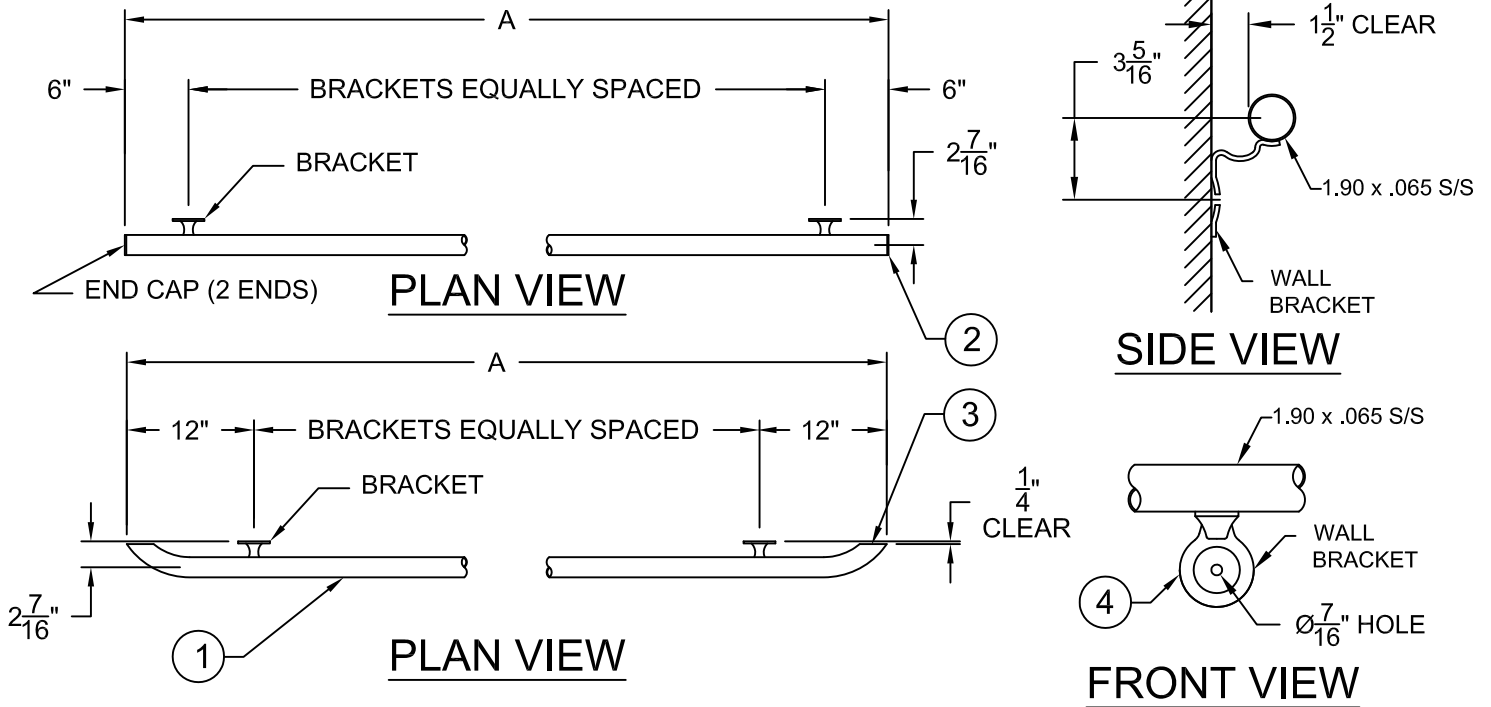


Exercise Rails



Specifications

- ① Rails shall be made from one continuous length of ASTM A-554 certified stainless steel pipe. It shall be 1.90" O.D. x .065" wall thickness, type 304 stainless steel, polished to 320 grit.
- ② Plain end rails shall have a closure cap at both ends to fit the O.D. of the rail.
- ③ Returned ends shall return to the pool wall and have a 1/4" clearance from the wall to the railing.
- ④ Wall brackets are stamped, Type 304 stainless steel, to be welded to railing. Mounting lags and shields (1 set per bracket) are provided with rail.

General

The stainless steel frame shall be electro-chemically passivated on all worked areas for maximum corrosion resistance. All bends shall be smooth and wrinkle free. All hardware shall be 18-8 stainless steel. Custom designs and modifications are available upon request.

Selector Chart:

PLAIN ENDS

ID NUMBER	BRACKET QTY	A	MATERIAL	BRACKET SPACING
34401	2	60"	.065 S/S	4'-0"
34402	2	72"	.065 S/S	5'-0"
34403	2	84"	.065 S/S	6'-0"
34404	3	108"	.065 S/S	4'-0"
34405	3	132"	.065 S/S	5'-0"
34406	3	156"	.065 S/S	6'-0"

RETURNED ENDS

ID NUMBER	BRACKET QTY	A	MATERIAL	BRACKET SPACING
34411	2	72"	.065 S/S	4'-0"
34412	2	84"	.065 S/S	5'-0"
34413	2	96"	.065 S/S	6'-0"
34414	3	120"	.065 S/S	4'-0"
34415	3	144"	.065 S/S	5'-0"
34416	3	168"	.065 S/S	6'-0"

The data represents the latest knowledge available to us at time of presentation. However, Paragon Aquatics and others involved in gathering and presenting this drawing assume no liability for its use.



PARAGON AQUATICS
Pentair Water
Commercial Pool & Aquatics

1351 Route 55
LaGrangeville, New York
12540
Phone: 845-463-7200
Fax: 845-463-7291
www.paragonaquatics.com

Drawn by: RV Date: 6/27/08 Approved by: SF Date: 6/27/08

Sheet Title: Exercise Rails

Drawing Number: SS-TA20.80

Revision Letter: B

Sheet: 1 of 1