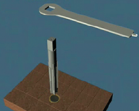


Wingmaster Plus Service Kit With Anchor Extractor

Step 1

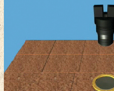
Insert tap in pop-up shell to create threads



Wing Shell Extractor How-to

Step 2

Thread shell adapter into anchor.



Wing Shell Extractor How-to

Step 2

Thread shell adapter into anchor.



Wing Shell Extractor How-to

Step 3

Thread stud

In adapter 1/4"

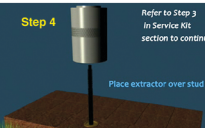


Wing Shell Extractor How-to

Step 4

Refer to Step 3
In Service Kit
section to continue

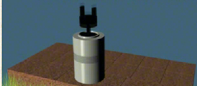
Place extractor over stud



Wing Shell Extractor How-to

STEP 5

Thread castle nut onto extractor



Wingmaster Plus Service Kit

STEP 6

Place tool on
castle nut and
turn clockwise
to remove anchor



Wingmaster Plus Service Kit

Place square tip of stud into tool to
remove old anchor from extractor
STEP 7



Wingmaster Plus Service Kit

STEP 8

Place a new anchor
in existing hole



Wingmaster Plus Service Kit

Directions:

Step 1. Lubricate with tap oil and insert tap in pop-up shell to create threads.

Step 2. Thread shell adapter into anchor.

Step 3. Thread stud in adapter 1/4 inch.

Step 4. Place extractor over stud.

Step 5. Thread castle nut onto extractor.

Step 6. Place tool on castle nut and turn clockwise to remove anchor.

Step 7. Place square tip of stud into tool to remove old anchor from extractor.

Step 8. Place new anchor in existing hole.