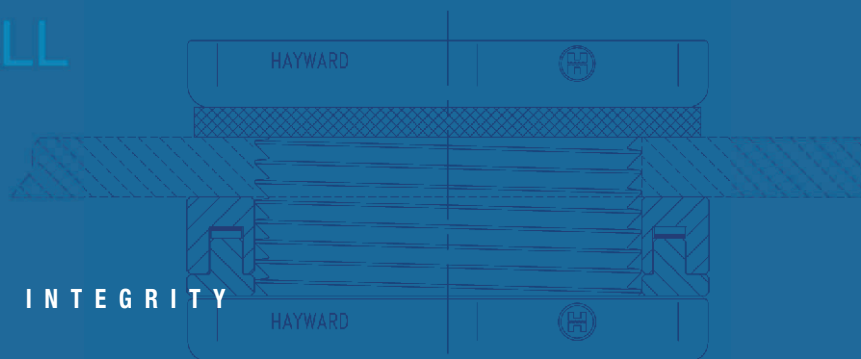


# Bulkhead Fitting Product Guide



define  
design  
**deliver**

TANK WALL  
BODY



# BFAS Series Bulkhead Fittings – Standard Flange

1/2" TO 3" PVC, CPVC AND PP – SHORT PATTERN



The New BFAS Series Standard Flange Short Barrel Fittings (Tank Adapters) offer safe, quick pipe connections to standard wall thermoplastic and metal tanks. The fittings feature left hand threads to prevent the fitting from unscrewing and are designed for easy one person installation.

## KEY FEATURES

- Short Pattern / Barrel in PVC, CPVC or PP
- FPM or EPDM Gasket Seal
- Rated to 150 PSI
- Left Handed Threads
- Heavy Duty Buttress Threads to Help Prevent Leaks Under Pressure
- Hex Body for Easy Installation

## TYPICAL APPLICATIONS

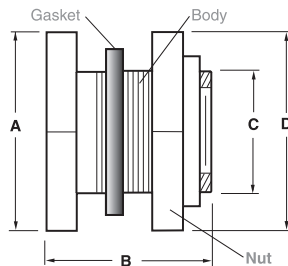
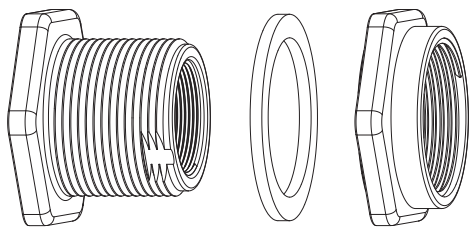
- Water and Wastewater Treatment
- Chemical Processing
- Food and Beverage
- Swimming Pools, Aquariums, and Theme Parks
- Pulp and Paper
- Marine and Corrosive Environments
- Metal Finishing and Plating
- Agriculture and Irrigation

## OPTIONS

- Ready Flanges for Making Flanged Connections to Tanks

## MATERIALS

- PVC Cell Class 12454 per ASTM D1784
- CPVC Cell Class 23447 per ASTM D1784
- PP per ASTM D4101
- Heavy-Duty FPM and EPDM Gasket Seals



## TECHNICAL INFORMATION

### SELECTION CHART

SIZE	MATERIAL	END CONNECTION	SEALS	PRESSURE RATING
1/2" – 3" (DN15 – DN80)	PVC	Socket x Thread Thread x Thread	FPM or EPDM	150 PSI @ 70°F non-shock
	CPVC	Socket x Thread		
	PP	Thread x Thread		

### MINIMUM INSIDE RADII OF TANKS

SIZE in / DN	Min. Rigid Tank ID	Min. Flexible Tank ID	Max. Wall Thickness
1/2 / 15	7.25"	6.50"	1.08"
3/4 / 20	10.00"	9.25"	1.08"
1 / 25	11.75"	10.10"	1.08"
1-1/4 / 32	16.25"	12.19"	1.00"
1-1/2 / 40	16.25"	12.19"	1.00"
2 / 50	25.75"	19.38"	1.00"
3 / 80	30.00"	25.25"	1.02"

### DIMENSIONS – INCHES / MILLIMETERS

SIZE in / DN	A in / mm	B in / mm	C in / mm <small>INSTALLATION HOLE SIZE</small>	D in / mm	E in / mm <small>GASKET THICKNESS</small>
1/2 / 15	2.00 / 51	2.75 / 69	1.38 / 35	2.00 / 50	.19 / 5
3/4 / 20	2.38 / 60	2.88 / 73	1.63 / 41	2.38 / 60	.19 / 5
1 / 25	2.56 / 65	2.88 / 73	1.88 / 47	2.56 / 65	.19 / 5
1-1/4 / 32	3.25 / 83	3.00 / 76	2.63 / 67	3.25 / 82	.19 / 5
1-1/2 / 40	3.25 / 83	3.00 / 76	2.63 / 67	3.25 / 82	.19 / 5
2 / 50	4.38 / 111	3.25 / 83	3.25 / 82	4.38 / 111	.25 / 6
3 / 80	6.00 / 152	3.63 / 92	4.50 / 114	6.00 / 152	.25 / 6

Dimensions A, C, & D are Across Flats. 1/2" to 2" Hexagon Flats, 3" Octagon Flats

# BFA Series Bulkhead Fittings – Standard Flange

1/2" TO 6" PVC, CPVC AND PP – LONG PATTERN



The Hayward BFA Series Standard Flange Long Pattern Fittings (Tank Adapters) are molded 1" longer than previous versions and allow safe, quick pipe connections to thicker wall thermoplastic and metal tanks. The fittings feature left hand threads to prevent the fitting from unscrewing and are designed for easy one person installation.

## KEY FEATURES

- Long Pattern / Barrel in PVC, CPVC or PP for Thicker Wall Tanks
- FPM or EPDM Gasket Seal
- Rated to 150 PSI
- Left Handed Threads
- Heavy Duty Buttress Threads to Prevent Leaks Under Pressure
- Hex Body for Easy Installation

## OPTIONS

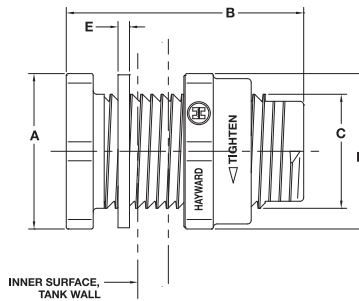
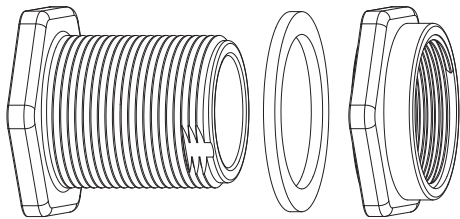
- Ready Flanges for Making Flanged Connections to Tanks

## TYPICAL APPLICATIONS

- Water and Wastewater Treatment
- Chemical Processing
- Food and Beverage
- Swimming Pools, Aquariums, and Theme Parks
- Pulp and Paper
- Marine and Corrosive Environments
- Metal Finishing and Plating
- Agriculture and Irrigation

## MATERIALS

- PVC Cell Class 12454 per ASTM D1784
- CPVC Cell Class 23447 per ASTM D1784
- PP per ASTM D4101
- Heavy-Duty FPM and EPDM Gasket Seals



## TECHNICAL INFORMATION

### SELECTION CHART

SIZE	MATERIAL	END CONNECTION	SEALS	PRESSURE RATING
1/2" – 6" (DN15 – DN150)	PVC	Socket x Socket	FPM or EPDM	150 PSI @ 70°F non-shock
	CPVC	Socket x Thread		
		Thread x Thread		
	PP	Thread x Thread		

### MINIMUM INSIDE RADII OF TANKS

SIZE in / DN	Min. Rigid Tank ID	Min. Flexible Tank ID	Max. Wall Thickness
1/2 / 15	7.25"	6.50"	2.08"
3/4 / 20	10.00"	9.25"	2.08"
1 / 25	11.75"	10.70"	2.08"
1-1/4 / 32	16.25"	12.19"	2.00"
1-1/2 / 40	16.25"	12.19"	2.00"
2 / 50	25.75"	19.38"	2.00"
3 / 80	30.00"	25.25"	2.12"
4 / 100	60.00"	55.00"	2.45"
6 / 150	114.00"	97.00"	3.25"

### DIMENSIONS – INCHES / MILLIMETERS

SIZE in / DN	A in / mm ACROSS FLATS	B in / mm	C in / mm INSTALLATION HOLE SIZE	D in / mm ACROSS FLATS	E in / mm GASKET THICKNESS
1/2 / 15	2.00 / 51	3.75 / 95	1.38 / 35	2.00 / 50	.19 / 5
3/4 / 20	2.38 / 60	3.88 / 99	1.63 / 41	2.38 / 60	.19 / 5
1 / 25	2.56 / 65	3.88 / 99	1.88 / 47	2.56 / 65	.19 / 5
1-1/4 / 32	3.25 / 83	4.00 / 102	2.63 / 67	3.25 / 83	.19 / 5
1-1/2 / 40	3.25 / 83	4.00 / 102	2.63 / 67	3.25 / 83	.19 / 5
2 / 50	4.38 / 111	4.25 / 108	3.25 / 82	4.38 / 111	.25 / 6
3 / 80	6.00 / 152	4.65 / 118	4.50 / 114	6.00 / 152	.25 / 6
4 / 100	8.75 / 222	5.75 / 146	5.75 / 146	8.75 / 222	.25 / 6
6 / 150	12.00 / 305	8.00 / 203	8.00 / 203	12.00 / 304	.31 / 8

Dimensions A, C, & D are Across Flats. 1/2" to 2" Hexagon Flats, 3" and 4" Octagon Flats

# BFA Series Bulkhead Fittings – Oversized Flange

1/2" TO 1" PVC, CPVC AND PP – LONG PATTERN



BFA Series Flange Bulkhead Fitting (Tank Adapters) features an oversized hex head flange designed specifically for safe, quick pipe connections to very large size tanks. The fittings feature left hand threads to prevent the fitting from unscrewing and are designed for easy one person installation.

## KEY FEATURES

- Oversized Hex Head Flange for Large Size Tanks
- Long Pattern / Barrel in PVC, CPVC or PP for Thicker Wall Tanks
- FPM or EPDM Gasket Seal
- Rated to 150 PSI
- Left Handed Threads
- Heavy Duty Buttress Threads to Prevent Leaks Under Pressure
- Hex Body for Easy Installation

## TYPICAL APPLICATIONS

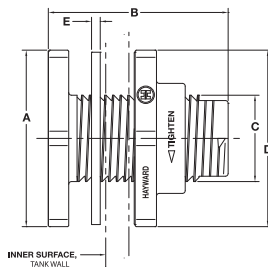
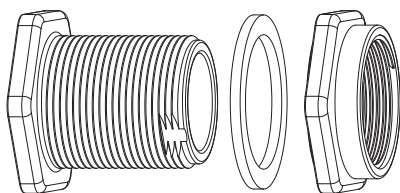
- Water and Wastewater Treatment
- Chemical Processing
- Food and Beverage
- Swimming Pools, Aquariums and Theme Parks
- Pulp and Paper
- Marine and Corrosive Environments
- Metal Finishing and Plating
- Agriculture and Irrigation

## OPTIONS

- Ready Flanges for Making Flanged Connections to Tanks

## MATERIALS

- PVC Cell Class 12454 per ASTM D1784
- CPVC Cell Class 23447 per ASTM D1784
- PP per ASTM D4101
- Heavy-Duty FPM and EPDM Gasket Seals



## TECHNICAL INFORMATION

### SELECTION CHART

SIZE	MATERIAL	END CONNECTION	SEALS	PRESSURE RATING
1/2" – 1" (DN15 – DN25)	PVC	Socket x Socket	FPM or EPDM	150 PSI @ 70°F non-shock
	CPVC	Socket x Thread		
		Thread x Thread		
PP	Thread x Thread			

### MINIMUM INSIDE RADII OF TANKS

SIZE in / DN	Min. Rigid Tank ID	Min. Flexible Tank ID	Max. Wall Thickness
1/2 / 15	12.00"	11.00"	2.08"
3/4 / 20	13.50"	12.75"	2.08"
1 / 25	20.50"	18.50"	2.08"

### DIMENSIONS – INCHES / MILLIMETERS

SIZE in / DN	A in / mm ACROSS FLATS	B in / mm	C in / mm INSTALLATION HOLE SIZE	D in / mm ACROSS FLATS	E in / mm GASKET THICKNESS
1/2 / 15	3.00 / 76	3.75 / 95	1.38 / 35	3.00 / 76	.19 / 5
3/4 / 20	3.55 / 90	3.88 / 98	1.63 / 41	3.55 / 90	.19 / 5
1 / 25	3.80 / 97	3.88 / 98	1.90 / 48	3.80 / 97	.19 / 5

Dimensions A, C, & D are Across Hexagon Flats.

# CCP Series Tank-Tite™ Fittings

1/2" TO 3" – PVC COMPRESSION FITTING

**TANK TITE™**



**NEW**

\* Does not come with bulkhead fitting

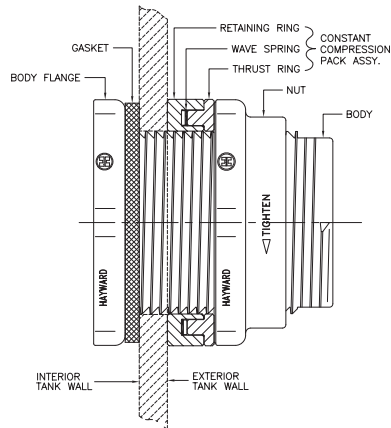
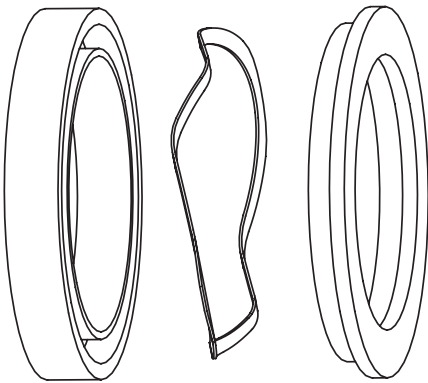
A revolutionary and patent pending designed PVC compression fitting that provides a constant load on the gasket of the bulkhead fitting to overcome, and compensate for tank wall expansion/contraction in thickness due to changes in temperature and/or pressure within the tank. The Tank-Tite™ also imparts at the same time a constant load on the bulkhead fitting nut that reduces the possibility of loosening of the nut due to vibration within the system.

## KEY FEATURES

- Robust PVC Upper and Lower Body Construction
- Stainless Steel Wave Spring
- Rated to 150 PSI
- Fits with Hayward BFA Series Bulkhead Fittings

## MATERIALS

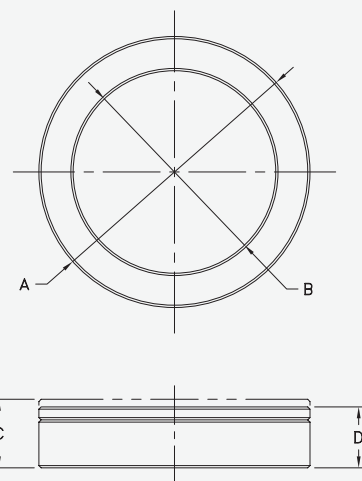
- PVC Cell Class 12454 per ASTM D1784
- 17-7 PH Stainless Steel



## TECHNICAL INFORMATION

### DIMENSIONS – INCHES / MILLIMETERS

SIZE in / DN	A in / mm	B in / mm	C in / mm FREE HEIGHT	D in / mm WORKING HEIGHT
1/2 / 15	2.40 / 61	1.40 / 36	.80 / 20	.69 / 18
3/4 / 20	2.40 / 61	1.65 / 42	.80 / 20	.69 / 18
1 / 25	2.72 / 69	1.90 / 48	.84 / 21	.72 / 18
1-1/4 / 32	3.56 / 90	2.66 / 68	.90 / 23	.80 / 20
1-1/2 / 40	3.56 / 90	2.66 / 68	.90 / 23	.80 / 20
2 / 50	4.38 / 111	3.25 / 82	.93 / 24	.83 / 21
3 / 80	6.12 / 155	4.52 / 115	1.07 / 27	.91 / 23



## Additional Hayward Products for Industrial Thermoplastic Tanks

### 1", 2" AND 3" PVC – SF SERIES SELF-ALIGNING BULKHEAD FITTINGS

#### KEY FEATURES

- PTFE Ball Seal
- Enables Straight Pipe Connections up to 27° of Offset Angle
- Ideal for Cone Bottom or Dome Top Tanks
- Swivel Ball Connection Corrects for Curved Tanks



### VACUUM BREAKER COMPACT – PVC

#### KEY FEATURES

- PVC Body with FPM Membrane
- Prevents Vacuum Build-Up During Tank or Pipeline Draining
- Eliminates Siphoning
- Quick, Easy Drainage to 300 GPM
- Reliable Venting of Tanks and Piping Systems
- Easy Installation
- No Metal Parts to Stick or Jam
- Can Mount to 1-1/2" BFAS or BFA Series Bulkhead Fitting Only



### 3/4" PVC – TRUE UNION AIR RELEASE VALVES

#### KEY FEATURES

- Vents up to 150 GPM
- FPM or EPDM Seals
- Closes at 0 PSI
- Hollow PP Ball
- All Thermoplastic – No Corrosion or Sticking
- Two Sets of End Connectors and Screen



### 1/4" TO 6" PVC AND CPVC – TRUE UNION BALL VALVES

#### KEY FEATURES

- Rated at 235 PSI through 4"
- Full Port Design
- Reversible PTFE Seats
- FPM or EPDM Seats
- Actuator Ready
- Double O-ring Stem Seals
- Adjustable Seat Retainer



### 1/2" TO 2" PVC – QV SERIES QIC2™ COMPACT BALL VALVES

#### KEY FEATURES

- Rugged, Compact and Lightweight Construction
- Full Port Design
- PTFE Seats
- EPDM O-ring Seals
- Low Torque, Easy 1/4-Turn Operation
- No Integral Parts to Replace
- Perfect for OEM Requirements



### BY SERIES BUTTERFLY VALVES 1-1/2" TO 12" PVC, CPVC AND GFPP WITH FPM, EPDM OR BUNA-N LINERS

#### KEY FEATURES

- Rated to 150 PSI for all Sizes
- Optional SSTL Lugs
- 316 Stainless Steel Shaft
- Pneumatic or Electric Actuators
- Blowout-Proof Shaft
- Gear Operators Available
- Stem Extensions



Hayward is a registered trademark and Tank-Tite and QIC2 are trademarks of Hayward Industries, Inc. © 2011 Hayward Industries, Inc.

BFPG-0511 17271SA042811KV