

# Chemtrol® PC2100

## PROGRAMMABLE CONTROLLER

**ORP / pH CONTROL**  
with 8-line LCD display  
and Chlorine Sensor Option

\* U.S. Patent 5,895,565

Chemical Automation is now recognized as a must for many applications such as swimming pools, spas, cooling towers and industrial water treatment. With its advanced microprocessor-based technology, the CHEMTROL® PC2100 Programmable Controller introduces a new standard of sophistication in automated control of sanitizers (chlorine or bromine), oxidizers and pH.

### STANDARD FEATURES

- ✓ Large 8-line **LCD DISPLAY** for easy operation,
- ✓ **ORP CONTROL** of sanitizer and/or oxidizer activity,
- ✓ **pH CONTROL** with choice of acid or base feed,
- ✓ Programmable **SHOCK TREATMENT** and **CHEMICAL SAVINGS** cycles,
- ✓ **LANGELIER SATURATION INDEX** for water balance,
- ✓ **AUTOMATIC DATA LOGGING** for up to 999 tests,
- ✓ **USB** and **Micro SD** ports for program updates and data logging,
- ✓ Safety **FLOW SWITCH**,
- ✓ **FULL SCREEN MENUS** in English, French or Spanish,
- ✓ Screen displays in **US** or **METRIC UNITS**,
- ✓ COMPATIBLE with all **COMMON SANITIZERS AND OXIDIZERS**.

### OPTIONS

- ✓ **FREE CHLORINE SENSOR** with direct readings in PPM or mg/l,
- ✓ **FLOW CELL** assembly with clear cover and 3 valves,
- ✓ Programmable **HEATER** control,
- ✓ **CONDUCTIVITY** or **TOTAL DISSOLVED SOLIDS (TDS)** control,
- ✓ **4-20 mA Outputs** for BMS or PLC control,
- ✓ **REMOTE COMPUTER OPERATION** and **GRAPHIC DATA DISPLAY** under *Windows™*.

### SIMPLE AND RELIABLE

The **CHEMTROL® PC2100** is a user-friendly and reliable controller that is easy to install and operate. All menus are displayed in clear language in English, French or Spanish with choice of US or metric units. Every unit is supplied with a comprehensive operation manual plus on-site start-up and training by a Qualified Dealer and a **FIVE-YEAR electronics warranty**.

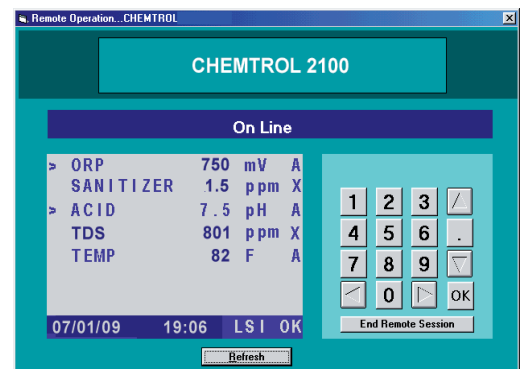
### EXTENDED TECHNICAL SUPPORT

The cost and frustration of service calls and downtimes are greatly reduced with two proprietary features of the **CHEMTROL® PC2100**:

- the patented **Probe Alert Safeguard\*** constantly monitors the response of the ORP and pH probes and alerts the operator in case of probe failure,
- the **CHEMCOM™** Program for *Windows™* allows **immediate technical support** from our Service Department or from a Qualified Dealer by remote computer with true duplex operation.

Technical support from **CHEMTROL®** is based on our experience with over 30,000 installations worldwide. It is also available by toll-free phone, by fax or by e-mail.

Visit our Web Site at [www.sbcontrol.com](http://www.sbcontrol.com) or call today for a free demo CD.



**REMOTE COMPUTER OPERATION**  
under *Windows™*

**Optional  
FREE CHLORINE  
Sensor and  
Flow Cell**

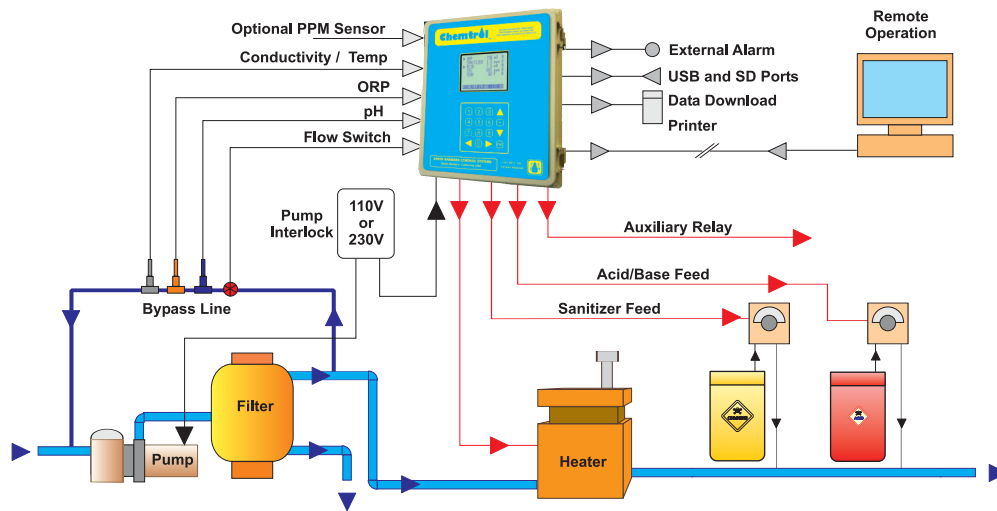


**SANTA BARBARA CONTROL SYSTEMS**  
5375 Overpass Road  
Santa Barbara, CA 93111 - USA

TOLL-FREE PHONE 800-621-2279  
PHONE 805-683-8833  
FAX 805-683-1893  
INTERNET [www.sbcontrol.com](http://www.sbcontrol.com)

Leading in Automated Water Treatment Since 1976

## POOL/SPA INSTALLATION



## SPECIFICATIONS

<b>ORP CONTROL</b>	200-999 mV Setpoint for oxidizer or reducer Programmable shock treatment and chemical saving cycles
<b>pH CONTROL</b>	0-14 Setpoint for acid or base feed
<b>PPM CONTROL (Optional)</b>	0.1 to 10 or 0.2 to 2 ppm or mg/l
<b>CONDUCTIVITY MONITORING</b>	0-20,000 $\mu$ S/cm or ppm Conversion Factor for TDS
<b>TEMPERATURE READOUT</b>	0 to 140 F (-18 to 60C)
<b>LANGELIER INDEX</b>	Calculated from pH, Temp, Total Alkalinity and Calcium Hardness Water Balance display
<b>SENSOR CALIBRATION</b>	1, 2 or 3 points
<b>CONTROL MODES</b>	Off, Manual, Automatic, Timer ON/OFF or Proportional Feed
<b>DATA LOGGING</b>	On-board memory for up to 999 tests USB port for datalog download
<b>ALARMS</b>	High / Low out-of-range Run time and overfeed Patented Probe Alert* Safeguard Visual, audio and external alarms
<b>REMOTE OPERATION</b>	Data communication modem CHEMCOM™ remote software and graphical display under Windows™
<b>MULTIPLEXING</b>	RS485 port for multiple connections
<b>MECHANICAL</b>	6x9x11 in. (15x23 x 29 cm) cabinet Rain and splatter proof NEMA Type 3R
<b>ELECTRICAL</b>	10 A / 110 or 230 V with selector switch All output and alarm relays 5 A
<b>WARRANTY</b>	5-year electronics 1-year sensors
<b>SHIPPING</b>	16 x 16 x 12 in. (41X41X31 cm) carton 16 lbs (7 kg)

## MODEL SELECTION

### STANDARD FEATURES

- ✓ ORP CONTROL
- ✓ pH CONTROL
- ✓ SAFETY FLOW SWITCH
- ✓ LANGELIER SATURATION INDEX
- ✓ AUTOMATIC DATA LOGGING
- ✓ REMOTE ALARM
- ✓ USB and MICRO SD PORTS

### OPTIONS

- FLOW CELL ASSEMBLY
- PPM SENSOR FOR FREE CHLORINE
- PPM SANITIZER CONTROL
- HEATER CONTROL
- CONDUCTIVITY/TDS CONTROL
- AUTO FILL FOR SALT GENERATORS
- REMOTE COMPUTER OPERATION
- RS485 FOR MULTIPLEXING
- 4-20 mA OUTPUTS FOR BMS/PLC

### REPRESENTED BY:

