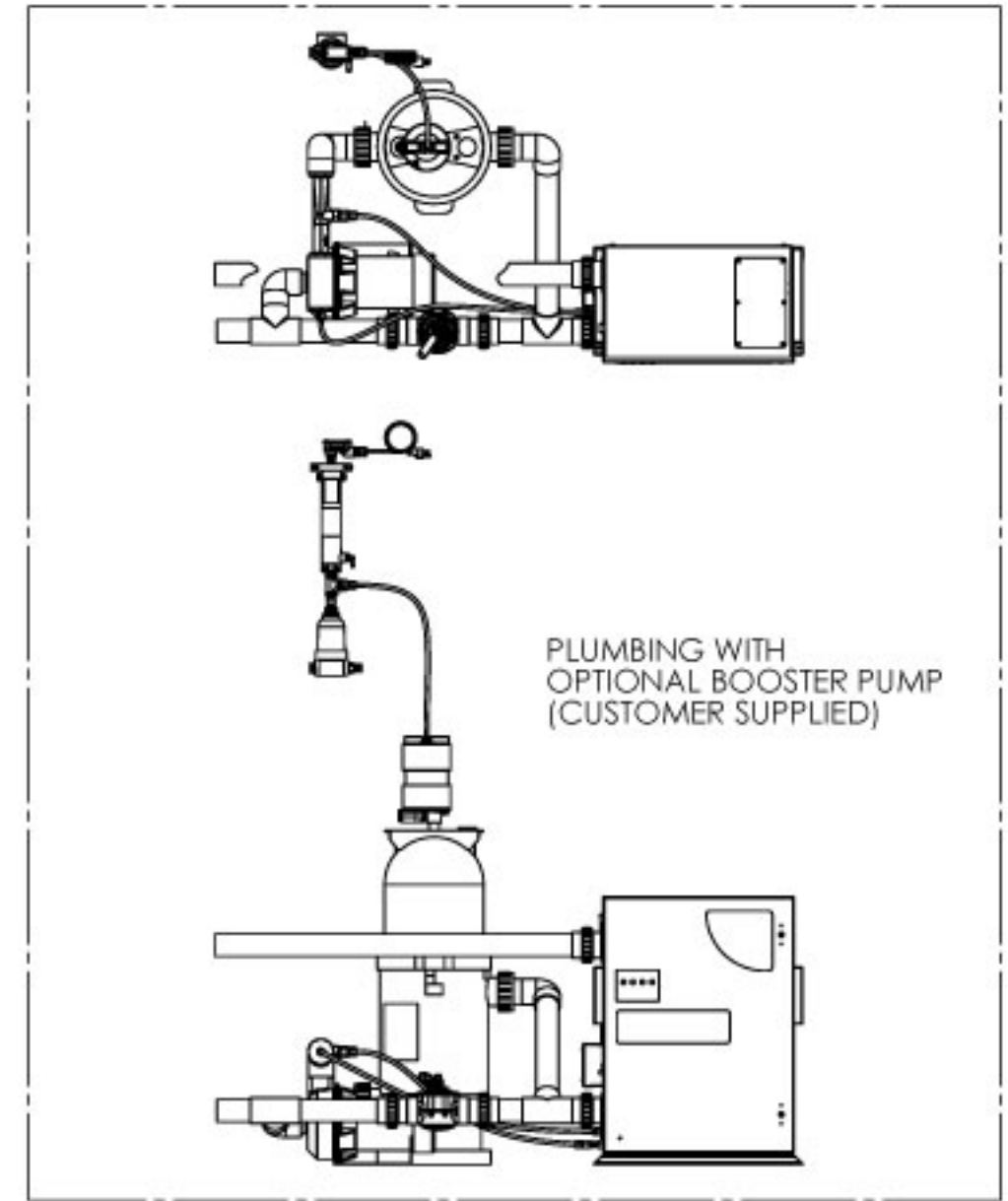
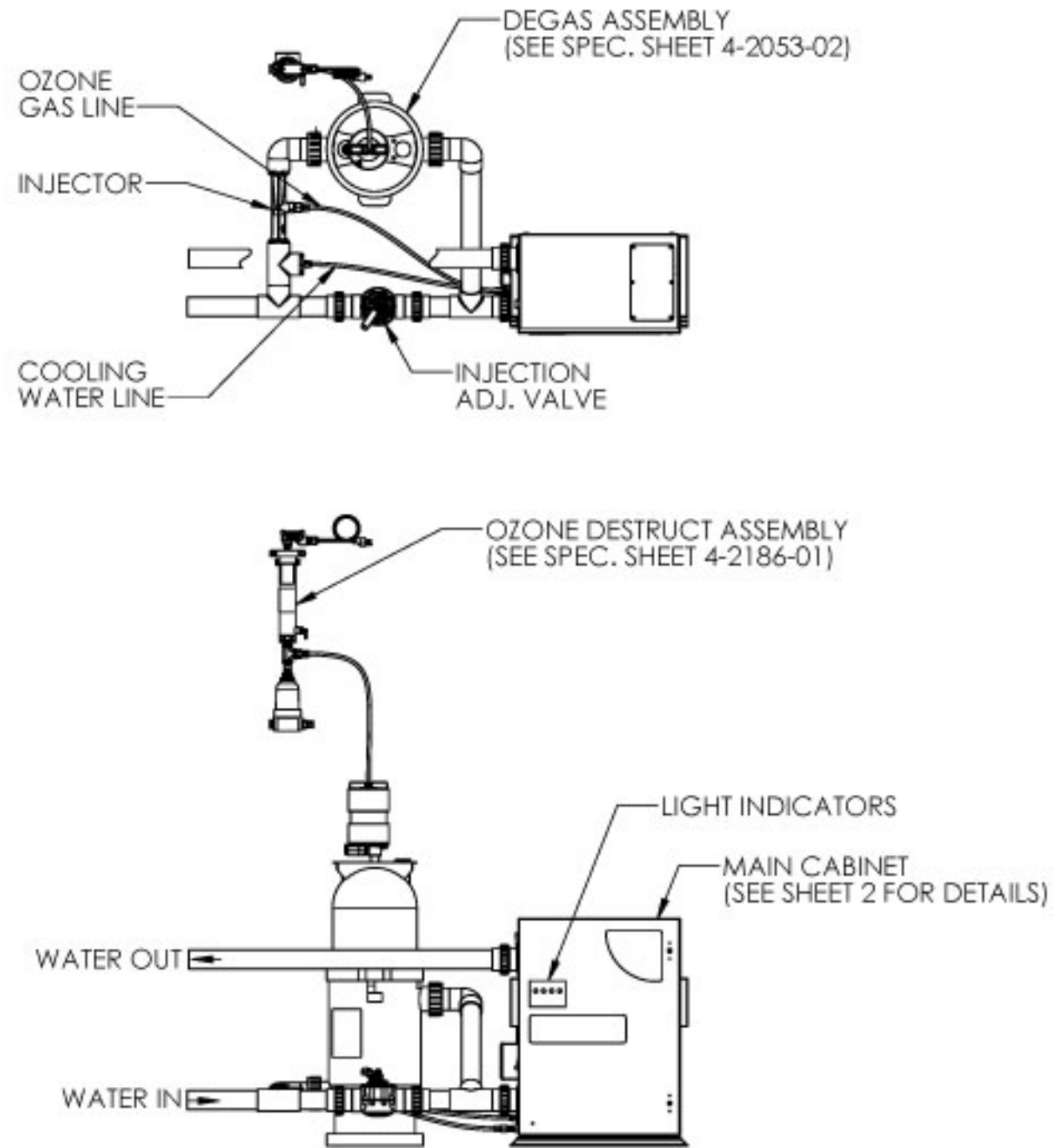


REVISIONS			
REV.	DESCRIPTION	ECN #	DATE
A	INITIAL RELEASE	NPD105	05/24/2021

SPECIFICATIONS	
MODEL	AOP-PRO-50-XX
POWER	120 V / 2.2 A / 60 Hz
ENCLOSURE RATING	NEMA 12
AMBIENT OPERATING TEMP.	40 - 110 °F (5 - 43 °C)
OPERATING FLOW RANGE	20 -50 GPM
MAXIMUM OPERATING PRESSURE	50 PSI
MAXIMUM WATER TEMP.	102 °F (39 °C)
APPROVALS	UL, NSF



NOTES: UNLESS OTHERWISE SPECIFIED

1. AOP-PRO-50-01 MODEL SHOWN.
2. PVC PIPE NOT INCLUDED.

PROPRIETARY AND CONFIDENTIAL
 THE INFORMATION CONTAINED IN THIS DRAWING IS THE SOLE PROPERTY OF CUSTOM MOLDED PRODUCTS. ANY REPRODUCTION IN PART OR AS A WHOLE WITHOUT THE WRITTEN PERMISSION OF CUSTOM MOLDED PRODUCTS IS PROHIBITED.

UNLESS OTHERWISE SPECIFIED DIMENSIONS ARE IN INCHES (MM) TOLERANCES: XX ± .1 XXX ± .02 XXXX ± .010 ANGLES: ± 1°	DRAWING STATE:	
	PROJECT A/ECN #:	
	ENGINEERING DESIGN	DATE
	T.MCNEEL	5/24/2021
	ENGINEERING APPROVAL:	
MATERIAL		
NA		
FINISH		
NA		
	CAD GENERATED DRAWING DO NOT MANUALLY UPDATE	

		TITLE:	
		SPECIFICATION, DWG, AOP-PRO-50-XX	
PART NO.		REV	
4-2658-01		A	
SCALE: 1:20	WEIGHT:	SHEET 1 OF 2	