

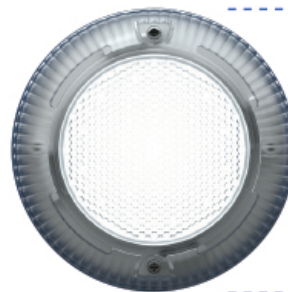
The **Vivid 360 LED Nicheless light** is specifically designed to fit a 1½” female threaded pool return inlet. Such return inlets can be placed in areas of reduced water depth to provide accent lighting to steps, ledges and tanning shelves. Threaded adaptors supplied with the light make it suitable to retrofit into a variety of nicheless fittings. Unlike traditional “pipe lights” the

Vivid 360 LED Nicheless light is convection cooled, allowing for reliable LED operation. The all-plastic construction of the light eliminates the need for bonding or grounding and ensures safety to pool users. Available in fixed colors of white, warm white or blue, plus multi-color models that can be operated from popular third-party controllers.

VIVID 360 LED POOL NICHELESS LIGHT – SPECIFICATIONS

MODEL	DESCRIPTION	COLOR TEMP OR WAVELENGTH	LUMENS	POWER CONSUMPTION	INCANDESCENT EQUIVALENT
ALL LIGHTS OPERATE FROM 12V AC ~ 14V AC POWER SUPPLY					
300071	Cool White	6,500K	550	11VA	90 watts
300076	Warm White	2,850K	510	11VA	85 watts
300070	Blue	465nm	180	11VA	N/A
300077T	Amber (Turtle Friendly)	595nm	225	11VA	>30 watts
300073	Multi-Color PENTAIR (held on white)	6,000K	425	18VA (20VA max)	>50 watts
300074	Multi-Color JANDY + WALL SWITCH (held on white)	6,000K	325	15VA (20VA max)	>40 watts
300075	Multi-Color HAYWARD (held on white)	>10,000K	400	19VA (20VA max)	>50 watts

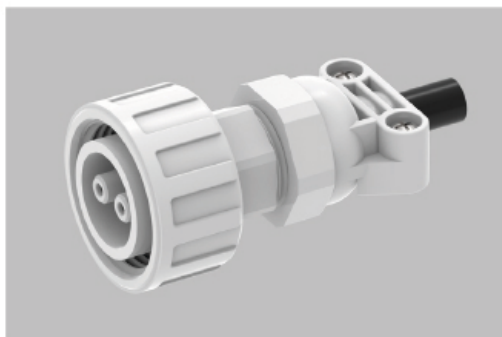
Maximum Cable Lengths for 18AWG Gauge Cable VIVID 360 LED Nicheless Pool Lights		
TRANSFORMER VOLTAGE	MULTI-COLOR	FIXED COLOR
12V	70ft	130ft
13V	100ft	190ft
14V	140ft	265ft



VIVID 360 LED Nicheless Pool Light



Plug Kit factory-fitted on 18AWG Cable



An innovative feature of the Vivid 360 LED Nicheless Light is its connectivity. The unique and patented waterproof **Plug Kit** is factory fitted to the supply cord, and allows for simple connection and detachment to the rear of the light. Once the new cord is pulled through, the light can simply be disconnected and re-connected as required. Available 18AWG Cord Lengths are 50ft, 100ft & 150ft.

Pentair, Jandy and Hayward are trademarks of their respective owners.