

LITE STAR[®]

RETRO-FIT LIGHTING

RETRO LIGHT FEATURES

- Retro-fits over standard light niches including SwimQuip & Spectrum 360
- Adjust the light beam up to 20 degrees to reduce surface glare and optimize lighting for any depth pool
- Bright and efficient low-voltage LED lighting Long-lasting light is easy to replace with Lite Star's Quick-Connect plug
- Built-in voltage indicator
- Adjustable brightness UV-resistant niche and plaster shield with integrated water stop, multiple conduit ports, and pre-drilled wire tie holes

12-14 volt transformer required for all of our low-voltage lighting

Watts

- Blue & White: 9 Watts
- RGBW: 17 Watts

Lumens

- Blue: 420 Lm
- White: 1870 Lm
- RGBW: 630 Lm



FACE PLATE COLORS

Stainless Steel, White & Light Gray

RGBW LIGHT COLORS

Blue, White, & Multicolor



CORD LENGTHS

50 ft., 100 ft., 150 ft.

SMALL



5 ³/₄ "

*does not adjust

LARGE



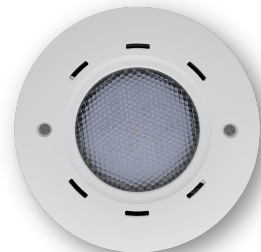
10 ³/₃₂ "

SWIMQUIP



8 ¹⁷/₃₂ "

SPECTRUM 360



6 ¹/₂ "

*does not adjust



LIT90067 | 04/2023
Made in the U.S.A.

BLUE SQUARE