

## TOP ACCESS

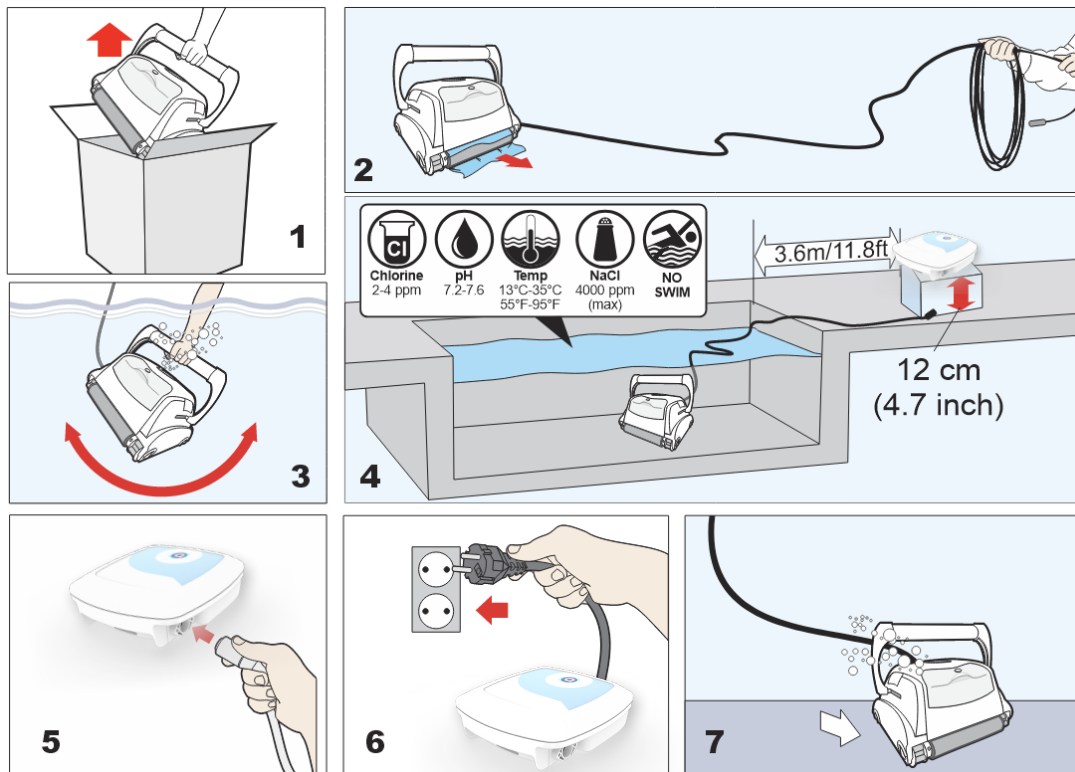
EN Operating instructions

FR Mise en marche de votre  
robot nettoyeur de piscine

ES Funcionamiento del robot  
limpiador de piscina



Quick start guide / Guide de démarrage rapide / Kurzanleitung / Manuale di avvio rapido /  
Guía de inicio rápido / Guia de início rápido



## Contents

### Safety

### Introduction

System Overview

How the Robotic Cleaner Cleans Your

Pool

Operating Conditions

### Components

Cleaner And The Main Parts

Power and Control Unit

### Operation

Before First Use

Placing Cleaner Unit into the Water

Starting the Robotic Cleaner

Cleaning Cycle

Stopping Robotic Cleaner Operation

Pulling Cleaner Unit out of the Water

### Using the App

### Maintenance

Cleaning Filters

Storing the Robotic Cleaner

Checking Water Outlet Propeller

### Using an External timer

### Troubleshooting

## IMPORTANT SAFETY INSTRUCTIONS

### READ AND FOLLOW ALL THE INSTRUCTIONS

**CAUTION:** Do not plug power supply into outlet or turn power supply on if the robot is not fully immersed in water. Operating the cleaner out of water will cause severe damage immediately and will result in loss of warranty. Allow the cleaner to remain in the pool for 15 to 20 minutes following the end of its cleaning cycle. This will allow the motors to cool adequately. Do not leave the cleaner in the pool all the time. Always remember to turn the power supply "OFF" and unplug it from the power outlet before removing the cleaner from the pool.

**WARNING:** The cleaner must NOT be used when people are in the water. For use with swimming pools only.



#### Safety Note

- The unit must be supplied through a residual current device (RCD) having a rated residual operating current not exceeding 30 mA
- The connection to the branch circuit should be consistent with the local and national wiring rules (electrical code).
- Mishandling of the unit can result in leakage of lubricants.
- If the supply cord is damaged, it must be replaced by the manufacturer's service agent or a qualified and trained person in order to avoid hazards.

This appliance is not intended for use by persons (including children) with reduced physical, sensory or mental capabilities, or lack of experience and knowledge, unless they have been given supervision or instruction concerning use of the appliance by a person responsible for their safety. Children should be supervised to ensure that they do not play with the appliance.

**WARNING:** A Ground Fault Current Interrupter (GFCI-USA) or a Residual Current Device (RCD-EUROPE) must be installed to protect your electric outlet and prevent any possible electric shock.

SAVE THESE INSTRUCTIONS



#### Product Disposal

Do not dispose of the electrical device together with normal household waste! In accordance with European Directive 2012/19/EU, worn out electric tools must be collected separately and returned for ecological recycling. For more information on disposal of your device, please contact your local authorities.

## Introduction

### System Overview

The robotic cleaner sweeps the pool floor and walls to collect dirt and debris into its internal filters. This user manual explains how to operate the robotic cleaner, including cleaning, maintenance and storage procedures.

### Note:

*This manual reviews several robotic cleaner models. There are some variations in components according to specific model.*

### How the Robotic Cleaner Cleans Your Pool

After the robotic cleaner is placed in the pool and activated, it operates according to the program set via the power and control unit. The robotic cleaner moves along the floor and walls of the pool, covering the entire area of the pool floor and walls. When the robotic cleaner has finished its program, it remains inactive on the pool floor.

### Note:

*Wall climbing is an optional feature. When the wall climbing feature is enabled, the robotic cleaner climbs the wall at intervals according to its internal program. The robotic cleaner ability to climb over stairs in swimming pool is subject to stair geometry and material.*

### Operating Conditions

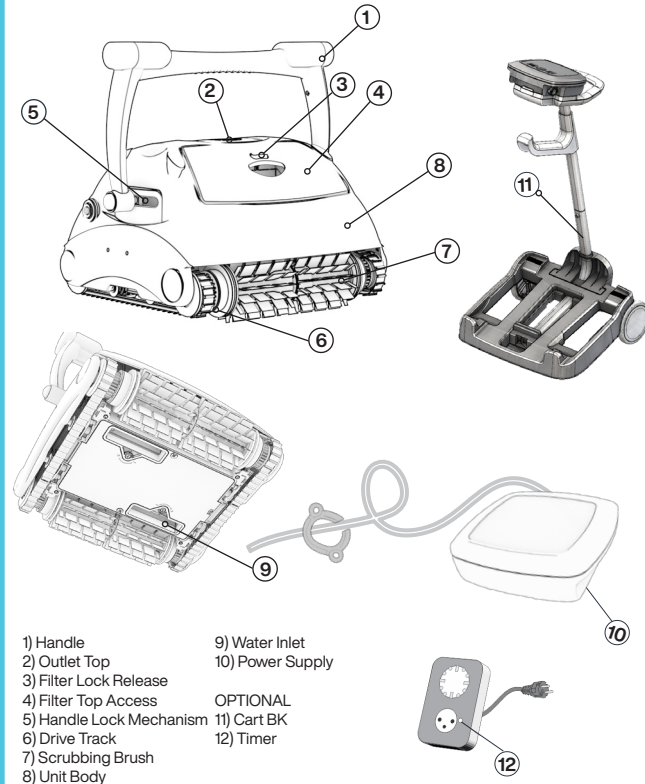
The robotic cleaner is intended for use in swimming pools in the following conditions:

- Temperatures ranging from 13°C-35°C (55°F-95°F), recommended temperature is between 22°C-32°C (72°F-90°F).
- Water pH: 7.2 - 7.6
- Chlorine level: pool is maintained according to the pool manufacturer's instructions. (recommended 2-4 ppm)

### Note:

*Failure to maintain the pool according to the recommended operating conditions could prevent the robotic cleaner from functioning properly. Remove the cleaner out of water when performing "Chemical Shock Treatment" to the pool water.*

## Components



## Components

### Contents of Packing Box

The robotic cleaner is packed in a box containing:

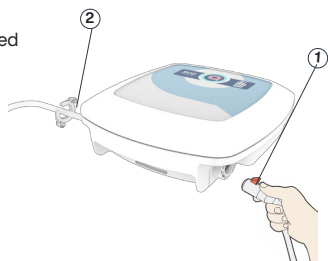
- Robotic cleaner and floating cable
- Power and control unit and cable
- User manual

**Cart** - According to model purchased

### Power and Control Unit

The power and control unit is connected to the robotic cleaner via the floating cable. The unit is powered by AC power (1) and supplies low voltage and commands to the cleaner unit through the outlet socket (2).

The unit features a control panel with various controls to operate the robotic cleaner.



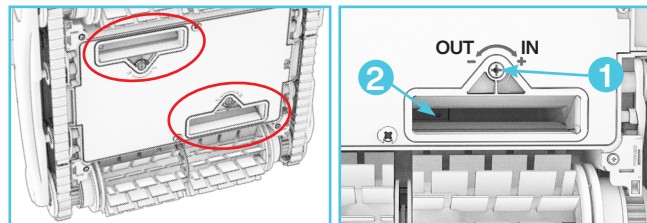
## Operation

### Before First Use

**Adjusting Suction Height:** Positioning the suction inlet (2) close to the pool surface increases the suction power and the cleaning quality. Lowering the suction inlet could result in interference with obstacles on the swimming pool floor or walls.

Use a screw driver to adjust the suction inlet position knob (1).

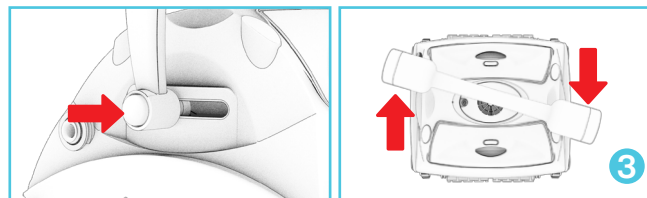
- IN – pulls the suction inlet away from the pool surface and reduces the suction power.
- OUT – brings the suction inlet closer to the pool surface and increases the suction power.



### Adjusting Floating Handle

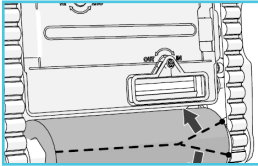
On wall climbing models, set the floating handle:

1. Press the lock button to release the handle lock.
2. Place the handle (3) diagonally at maximum position.
3. Repeat steps 1 and 2 on the other side of the cleaner unit.





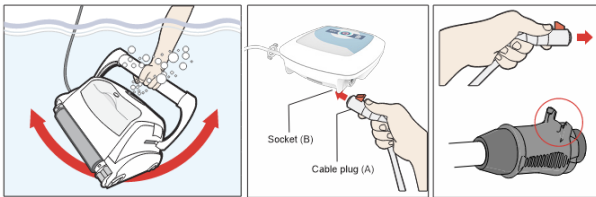
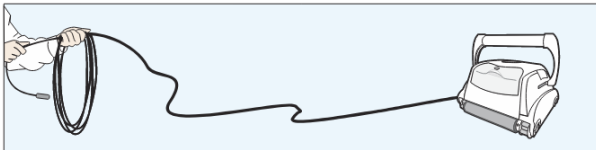
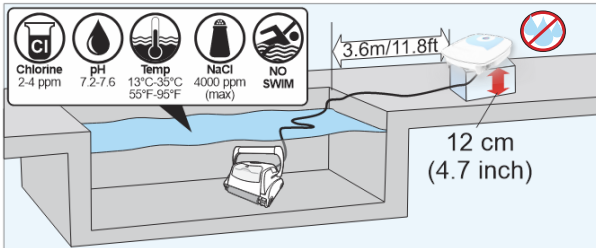
## Operation



### Removing Brush Covers (PVA only)

The robotic cleaner is shipped with a protective cover over the scrubbing brushes. Carefully remove the nylon covers from the scrubbing brushes.

**CAUTION:** Do not use a sharp tool to remove the cover as it could harm the brushes.



### Placing the Power and Control Unit

4. Place the power and control unit at least 3.6 meters/11.8 feet from the pool and at least 12 cm/4 inches above the surface.

**CAUTION:** The power and control unit must not be exposed to water or to direct sunlight.

5. Release floating cable plastic ties, which are used to secure the cables during shipping, by pressing plastic snap on the tie.

### Before placing the cleaner unit in the water

1. Make sure there are no people in the pool.
2. Make sure that the filters are clean.
3. Make sure the pool conditions are met; (see "Operating Conditions").

### Placing Cleaner Unit into the Water

1. Unroll the floating cable. It is recommended to extend a length of cable that is equal to the pool diagonal size plus an additional two meters.
2. Place the cleaner unit in the pool.
3. Let the robotic cleaner sink to the bottom of the pool. Do not start operation before the robotic cleaner is settled on the pool floor.
4. Spread the floating cable across the pool. Make sure that only the required length of cable is spread across the pool. Smooth out coils or twists in the cable. Roll extra cable outside the pool near the power and control unit.
5. Connect the floating cable (A) to the socket (B) located on the power and control unit.

**CAUTION:** Operating the cleaner out of water causes immediate severe damage and results in loss of warranty.

## Operation

### Starting the Robotic Cleaner

Connect the power and control unit to the wall socket (1). The Operation LED is lit (4) and the robotic cleaner starts its cleaning program. If the power and control unit is already connected to the wall socket, the Operation LED flashes (5) to indicate that the robotic cleaner is in standby mode. Press the Operation button (6). The Operation LED turns on (6) and the robotic cleaner starts the cleaning program.

**Note:** When the Check Filter LED (3) (optional in some models.) is lit, the robotic cleaner filters must be cleaned before placing the cleaner unit in the pool.

### Cleaning Cycle

During the cleaning cycle, the robotic cleaner:

- Moves across the pool floor picking up dirt and debris.
- Changes direction and rotates automatically according to the selected program
- Climbs the pool walls every few minutes, as set in its internal program.

**Note:** The robotic cleaner might occasionally stop moving for a few seconds. This is part of normal operation, not a malfunction.

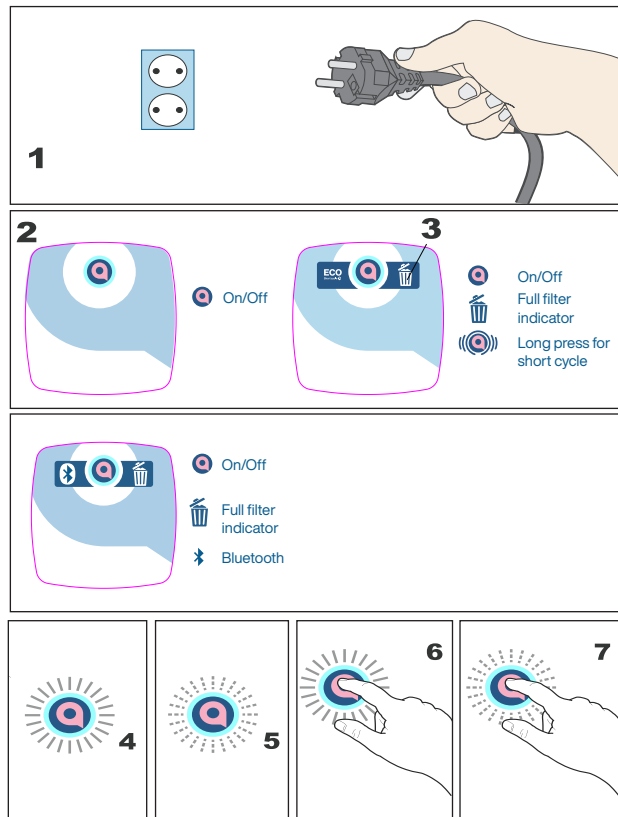
### Stopping Robotic Cleaner Operation

The robotic cleaner moves automatically to STANDBY after every cleaning cycle and the operation LED starts flashing (5). To stop the cleaner operation during a cleaning cycle, press the operation button (7) once. The operation LED starts flashing (7) and the cleaner is in standby mode.

### Pulling Cleaner Unit out of the Water

1. Unplug the floating cable from the power and control unit.
2. Pull up on the floating cable to pull the cleaner unit closer until it is possible to take hold of the handle.
3. Using the handle, lift the cleaner unit out of the pool.

**CAUTION:** Do not use the floating cable to lift the cleaner unit out of the water.



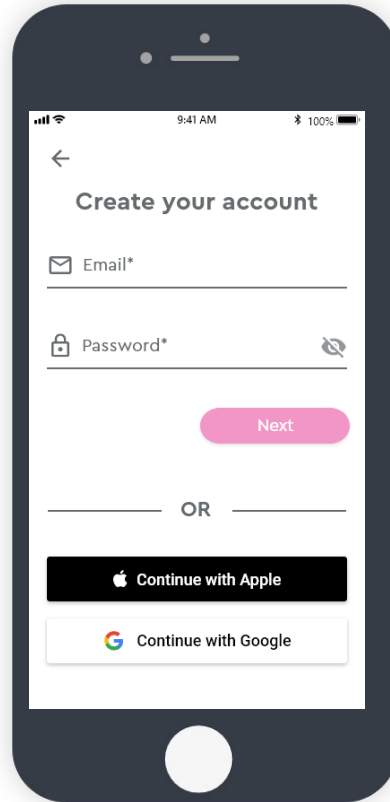
## Using the App

### Starting the Robotic Cleaner using the App :

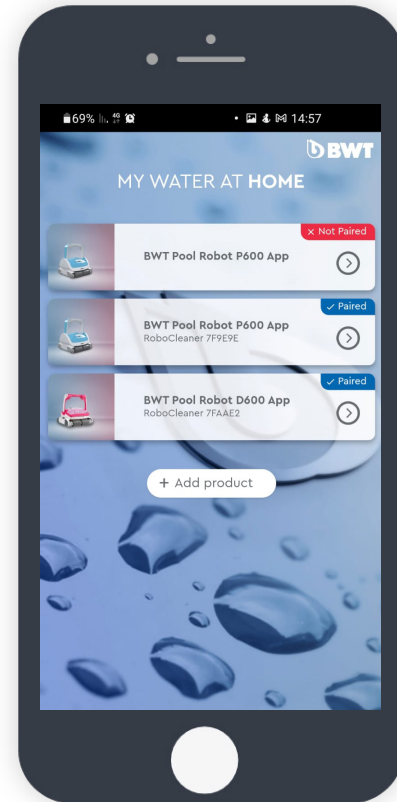
1. Download and install the Application from Google Play using the QR code on the back of the manual.
2. Open the BWT HOME App.
3. Open Bluetooth option on your phone.

### Registration

Please sign up to the app and add your product according to the app's instructions.



To activate the cleaner, tap on the product in the MY WATER AT HOME page.

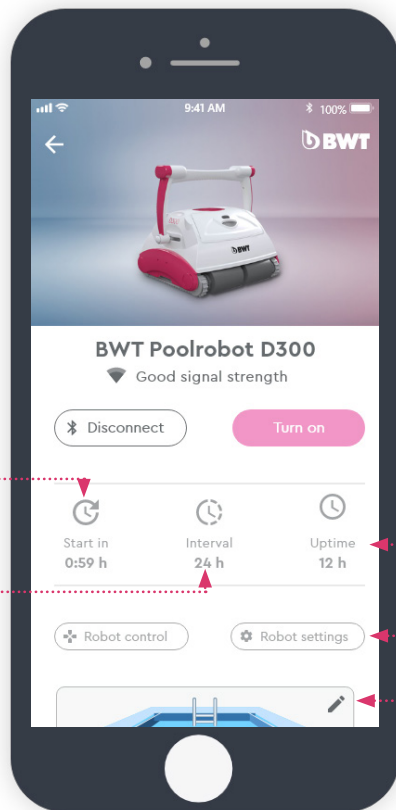




## Using the App

**Delay Start** (in hours):  
The Pool Cleaner will start the cleaning cycle after the chosen period of time.

**Work Interval:**  
The Pool Cleaner will start working automatically every 48/72/96 hours. (Choosing this option will cancel the Delay time)



### Remote Control

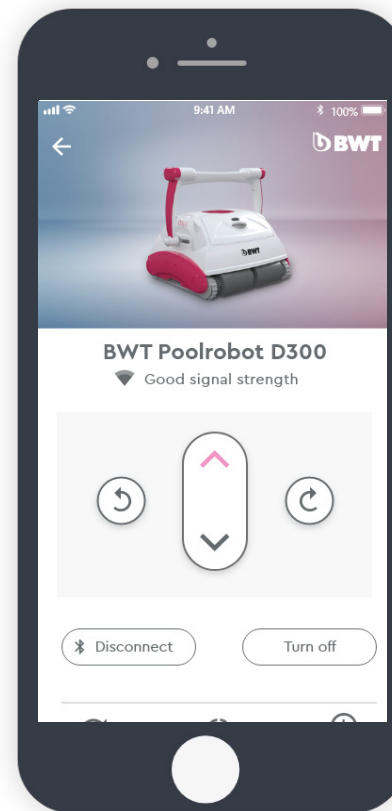
Hold down the RIGHT or LEFT icons to turn the robot. Use single-tap on the CHANGE DIRECTION icon to change the driving direction of the pool Cleaner.

**Operation Time:** The Pool Cleaner will clean the pool according to the chosen cycle time:  
- 1.5 hours, floor only cleaning  
- 2 hours, floor and wall cleaning  
- 2.5 hours, floor and wall cleaning

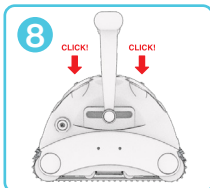
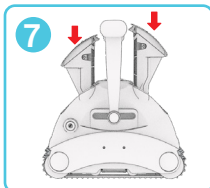
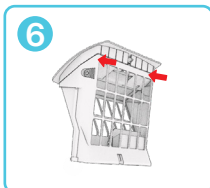
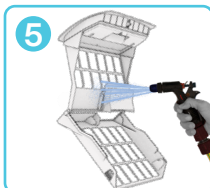
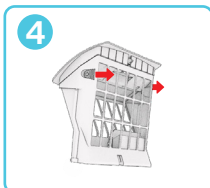
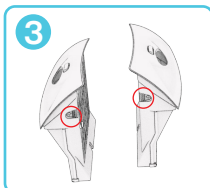
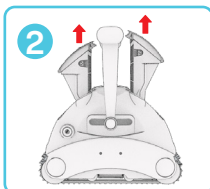
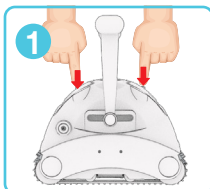
### Settings

Change the settings of the Pool Cleaner

**Pool Properties:** Scroll down to choose pool shape



## Maintenance



### Cleaning the Filters

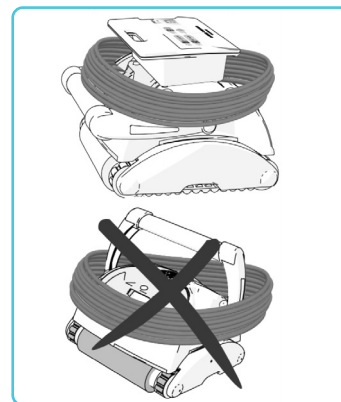
The two filters must be cleaned after each cleaning cycle.

1. Release the filter and pull it out of the cleaner unit. (1), (2)
2. Pull the filter door against the filter housing to open the filter case. (3), (4)
3. Spray water on the outer sides of the filter and then spray water towards the inner side of the filter to clean all the dirt and debris. (5)
4. Verify that the small plastic shutter (2) is in place and not broken, then close the filter. (6)
5. Insert the filter back into its location until a click is heard to secure the filter in place. (7), (8)

### Storing the Robotic Cleaner

Follow these instructions to store the robotic cleaner when not in use:

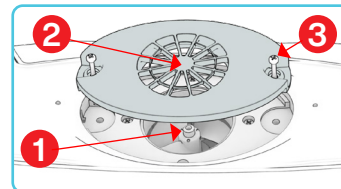
1. Disconnect the power cord from the wall outlet.
2. Disconnect the floating cable from the power and control unit.
3. Spread out the floating cable and release any twists in the cable.
4. Wash the cleaner unit interior space with fresh water and let it dry.
5. Roll the floating cable and place it **ON THE CLEANER** unit.  
Caution: **DO NOT ROLL** the floating cable **ON THE HANDLE** of the cleaner unit.
6. Store the robotic cleaner components in a dry, closed location.
7. Verify that the power and control unit is not exposed to water.



### Checking Water Outlet Propeller

It is recommended to periodically clean debris and hair from the propeller of the water outlet:

1. Remove the screws (3) that holds water outlet cover (2).
2. Remove the water outlet cover (2).
3. Clean any hairs, dirt, or debris.
4. Verify that the propeller (1) is not broken.
5. Return the cover (2) and fasten it with the screws (3).



## External Timer

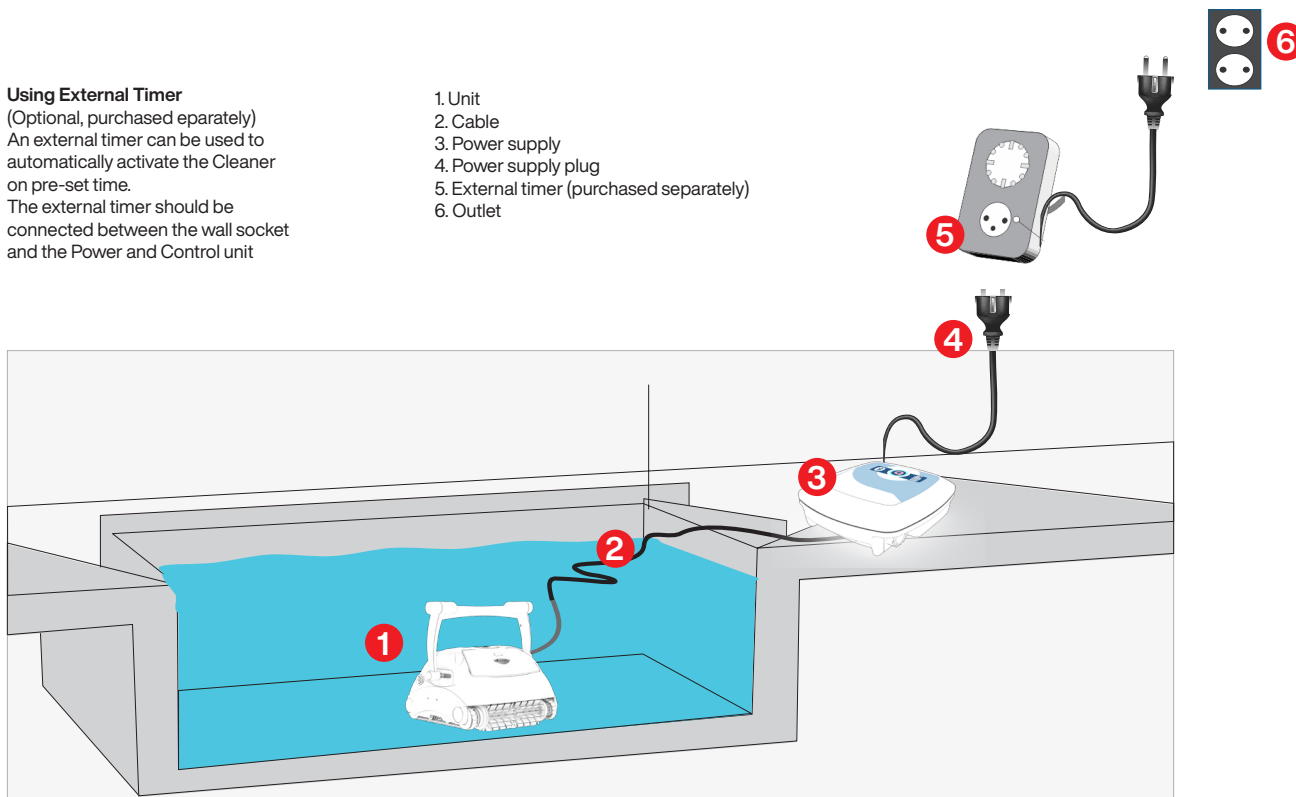
### Using External Timer

(Optional, purchased eparately)

An external timer can be used to automatically activate the Cleaner on pre-set time.

The external timer should be connected between the wall socket and the Power and Control unit

1. Unit
2. Cable
3. Power supply
4. Power supply plug
5. External timer (purchased separately)
6. Outlet



## Troubleshooting

### CLEANER DOES NOT TURN ON

**There is no electricity in the wall socket.**

1. Disconnect cleaner from the power and control unit.
2. Disconnect power supply from the wall socket, wait 30 seconds and reconnect.
3. Turn power ON. If not activated, connect the unit to a different wall socket.

**Floating cable not connected properly to the power and control unit.**

Reconnect the floating cable to the power and control unit.

**Obstacle in the drive system of the cleaner unit.**

1. Turn the cleaner unit carefully to view the underside.
2. Check that the scrubbing brush is not bent/broken.
3. Clean and remove obstacles and debris if necessary.

**Propeller is seized due to accumulation of hair.**

Check if the propeller is broken or needs to be cleaned (see "Checking Water Outlet Propeller").

### CLEANER MOVES BUT DOES NOT PUMP WATER

**Filters are dirty.**

1. Remove the filters
2. Run the robotic cleaner in the pool without the filters. If working properly, clean the filters well or replace the filters.

**Propeller is broken or seized due to accumulation of hair.**

Check if the propeller is broken or needs cleaning (see "Checking Water Outlet Propeller").

### CLEANER PUMPS WATER BUT DOES NOT MOVE

**Obstacle in the drive system of the cleaner unit.**

1. Turn the cleaner unit carefully to view the underside.
2. Check that the scrubbing brush is not bent/broken.
3. Clean and remove obstacles and debris if necessary.

### CLEANER STARTS AND SHUTS OFF AFTER A SHORT TIME

**Filters are dirty.**

1. Remove the filters.
2. Run the robotic cleaner without the filters. If working properly, clean the filters well or replace the filters.

**Propeller is broken or seized due to accumulation of hair.**

1. Remove the top screws on the top outlet.
2. Check if the propeller is broken or needs to be cleaned.

**Obstacle in the drive system of the cleaner unit.**

1. Turn the cleaner unit carefully to view the underside.
2. Check that the scrubbing brush is not bent/broken.
3. Clean and remove obstacles and debris if necessary.

### CLEANER DOES NOT PICK UP DIRT

Filters are dirty or have holes.

Clean as needed and verify that there are no holes in the filters.

Propeller is broken or seized due to accumulation of hair.

Check if the propeller is broken or needs cleaning (see "Checking Water Outlet Propeller").

The suction inlet is not close enough to the pool floor.

Move the suction inlet OUT (see "Adjusting Suction Height").

### DIRT COMES OUT OF THE CLEANER WHEN REMOVING IT FROM POOL

Filter shutter is broken or missing.

Open the filters and verify that the filter shutter is not broken and functions properly (see "Cleaning Filters")

Holes in the filters.

Open the filters and verify that there are no holes in the filter screens (see "Cleaning Filters")

Bottom lid is not properly closed.

Make sure that the bottom lid is properly closed.

## Troubleshooting

### CLEANER UNIT DOES NOT COVER THE ENTIRE POOL

**Filters are dirty.**

Clean the filters.

**There is not enough length of the floating cable in the water to reach**

**the far end of the pool, or the cable is tangled.**

1. Verify that there is enough length of the floating cable in the water to reach the far end of the pool.
2. Make sure that the floating cable is properly spread out and is not tangled.

**Pool pH level is incorrect.**

Make sure that the pH level is between 7.2 and 7.6.

**Chlorine level is incorrect.**

Check water chlorine treatment and correct if required (Remove the cleaner from the pool during the treatment.)

**Propeller is broken or seized due to accumulation of hair.**

1. Remove the top screws on the top outlet.
2. Check if the propeller is broken or needs cleaning.

**Obstacle in the drive system of the cleaner unit.**

1. Turn the cleaner unit carefully to view the underside.
2. Check that the scrubbing brush is not bent/broken.
3. Clean and remove obstacles and debris if necessary.

### THE CLEANER DOES NOT CLIMB WALLS

**The cleaner is not climbing the pool walls.**

1. Verify that your robotic cleaner is not a floor-only model.
2. Verify that P1, floor cleaning only, is not selected on the power and control unit (see "Robotic Cleaner Programming").

**Filters are dirty.**

Clean the filters.

**Propeller is broken or seized due to accumulation of hair.**

Check if the propeller is broken or needs cleaning (see "Checking Water

Outlet Propeller").

**pH level is incorrect.**

Make sure that pH is between 7.2 and 7.6.

**Chlorine level is incorrect.**

Check water chlorine treatment (remove the cleaner from the pool during treatment).

**Water temperature is not optimal.**

Recommended temperature is between 22°C–32°C (72°F–90°F).

### THE CABLE IS TANGLED

**Filters are dirty.**

Clean the filters.

**Brush is missing or broken.**

Check that the scrubbing brush is complete and not bent/broken.

**Cable is not spread out before putting the cleaner unit into the pool.**

Make sure that the floating cable is properly spread out and not tangled before operating the robotic cleaner.

**The length of the cable in the water is too long.**

Verify that the length of cable in the water equal to the pool diagonal length plus two meters.

**Propeller is broken or seized due to accumulation of hair.**

Check if the propeller is broken or needs cleaning (see "Checking Water Outlet Propeller").



Control your pool cleaner with  
BWT Best Water Home App



BK0019397/PA