

ES600

ES700

ES800

Robotic pool cleaner

- EN** USER MANUAL FOR THE POOL ROBOT / 2
- DE** BEDIENUNGSANLEITUNG FÜR DEN AUTOMATISCHEN BODENSAUGER / 8
- FR** MISE EN MARCHE DE VOTRE ROBOT NETTOYEUR DE PISCINE / 14
- IT** FUNCIONAMIENTO DEL ROBOT LIMPIADOR DE PISCINA / 20
- ES** MANUALE DI ISTRUZIONI / 26
- PT** INSTRUÇÕES DE FUNCIONAMENTO / 32
- NL** UW ZWEMBADREINIGINGSROBOT STARTEN / 38



Welcome to the User Manual for the ES-Line (ES600/ES700/ ES800) Pool Robot

Thank You for Your Trust in a BWT Product!

We appreciate your choice of an ES-Line pool robot. Your device has been designed to provide efficient and convenient pool cleaning.

BWT Home App

Download the BWT Home App from Google play or APP store to gain full control over your pool robot and access advanced features. [Link to the App/reference to BWT Home App]

Package Contents

Inside the box, you will find:

- 1x Pool robot (ES1500)
- 1x Control box/Power Box
- 1x Power cable
- 2x Filter basket (ES1500)
- 1x Quick Start Guide
- 1x Caddy

Please check the contents carefully and contact BWT customer service or BWT pool partner if any part is missing or damaged.

System Overview

The pool robot cleans the pool floor and walls, collecting dirt and debris in its filter. This manual explains how to operate the robot, including cleaning, maintenance, and storage procedures.

Operation of the Pool Robot

Once placed in the pool and activated, the robot follows a preset cleaning program, systematically moving across the pool floor and walls. After completing the cycle, it remains inactive on the pool floor, and power is automatically shut off.

Notes:

- It is not recommended to stop the pool robot before the cleaning cycle is complete.
- The robot climbs pool walls at programmed intervals. Its ability to climb steps depends on their geometry and material.

Operating Conditions

The pool robot is intended for use in residential swimming pools only, under the following conditions:

- **Water temperature:** 13°C – 35°C (55°F – 95°F)
- **pH level:** 7.2 – 7.6
- **Chlorine level:** As per the pool manufacturer's recommendations (recommended: 2–4 ppm)

▲ Important Notice: Failure to maintain the pool according to these operating conditions may affect the robot's performance. We wish you great enjoyment with your new pool robot!

For more information and support, please visit our website or contact our customer service team.

Components



Operation

To ensure safe and efficient operation, position the power supply unit at least 3.6 meters (11.8 feet) away from the pool and at least 12 cm above the ground.

▲ Important: The power supply is **not water-resistant**. Keep it away from water and direct sunlight to prevent damage.

To release the floating cable, press the plastic snap on the zip ties. Use only the necessary length of cable in the water, keeping excess cable neatly coiled near the power supply.

Preparing the Robotic Cleaner for Use

Before placing the cleaner in the pool, ensure the following:

- No one is in the pool.
- The filters are clean.
- The pool water meets the required conditions (see "Operating Conditions").

Placing the Robotic Cleaner in the Pool

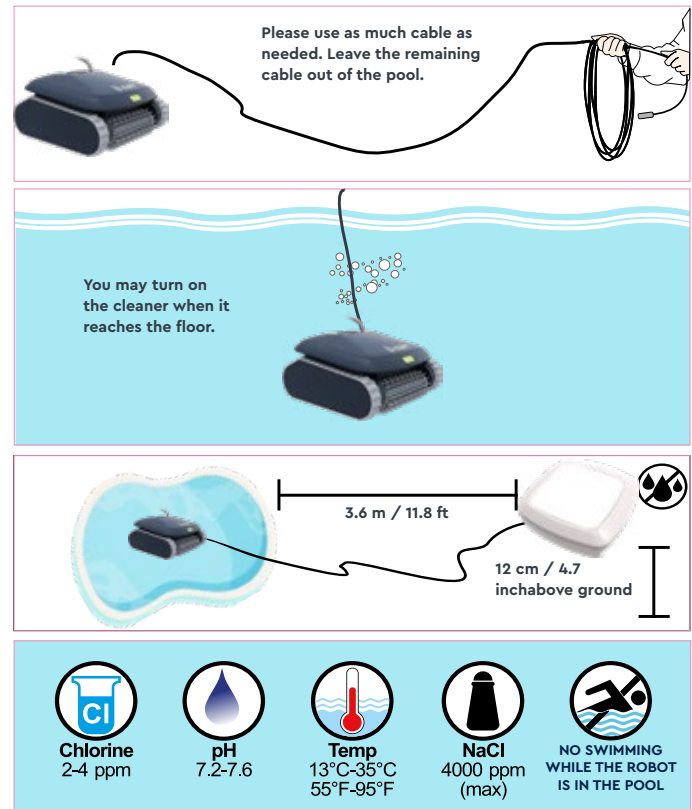
1. Unroll the floating cable, ensuring there are no tangles or twists.
2. Extend the cable length to match the pool's diagonal length plus an additional 2 meters.
3. Connect the floating cable to the power supply socket.
4. Keep excess cable **out of the pool** and neatly coiled near the power supply.
5. Gently place the robotic cleaner in the pool and let it sink to the bottom.

▲ Caution: Do not start the cleaner until it has fully settled on the pool floor. Operating the cleaner outside of water may cause **immediate and irreversible damage**, voiding the warranty.

Starting the Robotic Cleaner

1. Plug the power supply into a wall socket.
2. The **On/Off button** will light up, and the robotic cleaner will begin its cleaning cycle.
3. If the power supply is already plugged in, the On/Off button will flash, indicating standby mode.
4. Press the **On/Off button** to toggle between On and Standby mode.

Note: If your model features a **full filter indicator light**, make sure to remove and clean the filter before placing the cleaner back in the pool. By following these steps, you ensure optimal performance and longevity of your robotic pool cleaner.



EN

Cleaning Cycle

During the cleaning cycle, the robotic cleaner systematically moves across the pool floor, collecting dirt and debris. It automatically changes direction and rotates according to the selected program. Every few minutes, it climbs the pool walls as programmed in its internal system.

Note: The robotic cleaner may pause briefly during operation. This is a normal part of its cycle and does not indicate a malfunction.

Stopping the Robotic Cleaner

After completing a cleaning cycle, the robotic cleaner automatically enters **standby mode**, and the **On/Off button** will start flashing. To manually stop the cleaner during a cycle:

1. Press the **On/Off button** once.
2. The button will start flashing, indicating that the cleaner is now in **standby mode**.

Removing the Cleaner from the Pool

1. **Unplug** the floating cable from the power supply.
2. **Gently pull** the floating cable until the unit is within reach.
3. **Use the handle** to lift the cleaner out of the pool.

▲ **Caution:** Never lift the cleaner by the floating cable, as this may cause damage.

Control box & Controls

The Control box unit connects to the robotic cleaner via the **floating cable** and provides low-voltage power and commands through its **output socket**. It operates using AC power and features a **control panel** with the following indicators:

- **On/Off button** – Powers the unit on or off.
- **Full filter indicator** – Alerts when the filter needs cleaning (available on some models).
- **Bluetooth indicator** – Shows connectivity status for applicable models.

By following these instructions, you ensure optimal performance and longevity of your robotic pool cleaner.

Power Supply



Maintenance and Storage

Cleaning the Filters To maintain optimal performance, the filter(s) must be cleaned after each cleaning cycle. Follow these steps:

1. Press the **release button** to open the lid.
2. Carefully **remove the filter(s)** from the unit.
3. Rinse the **outer side** of the filter with clean water.
4. Spray water from the **inner side** to flush out all dirt and debris.
5. Once clean, **reinsert the filter(s)** securely back into the unit.

Checking & Cleaning the Water Outlet Propeller

For optimal efficiency, periodically inspect and clean the water outlet propeller to remove hair, dirt, or debris:

1. **Unscrew** the outlet locker securing the outlet cover.
2. **Remove** the water outlet cover carefully.
3. **Clear any debris or hair** from the propeller.
4. Reattach the outlet cover and secure the locker.

Note: The unit may feature **single or double filters**, depending on the model.

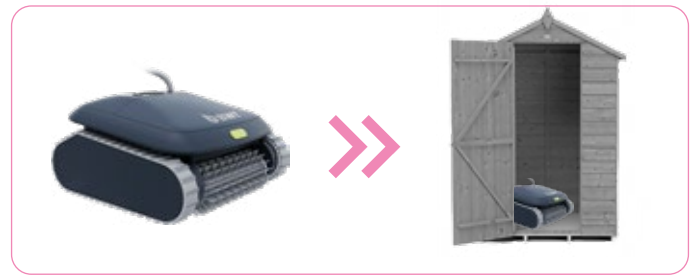
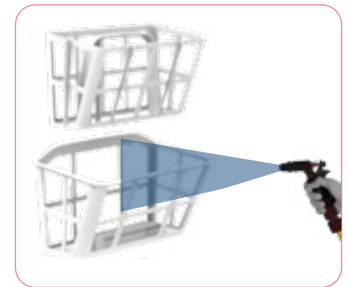
By following these maintenance steps, you ensure that your robotic cleaner operates at peak performance and enjoys a long service life.



Storing the Pool Robot

To ensure the longevity of your robotic cleaner, follow these storage steps:

1. **Disconnect** the power cord from the wall outlet.
 2. **Unplug** the floating cable from the power supply.
 3. **Ensure** the power supply is kept dry and away from water.
 4. **Straighten and loosely** roll the floating cable to avoid tangles.
 5. **Rinse** the interior and exterior of the cleaner with fresh water.
 6. **Allow the unit to dry completely** before storing.
 7. **Gently roll the floating cable** and place it on top of the cleaner.
 8. **Store all components** in a **dry, enclosed location** to prevent damage.
- ▲ **Caution:** Storing the cleaner or its components in damp or exposed environments may result in damage.



EN

Troubleshooting Guide

▲ Important Safety Warnings

- Do not stay in the pool while the robotic cleaner is in operation.
- Remove all objects from the pool before starting the cleaner.
- Do not leave the cleaner in the pool when not in use.
- Always connect the power supply through a **Ground Fault Current Interrupter (GFCI)** (USA) or **Residual Current Device (RCD)** (Europe) with a maximum rating of 30 mA.
- Ensure the power connection complies with local and national wiring regulations.
- Replace parts only with original components from a BWT-authorized service center.
- Keep out of reach of children.
- Do not operate the cleaner if liquid flocculants or clarifiers have been added to the pool, as these substances can clog and damage the filters.

Common Issues & Solutions

Cleaner Does Not Turn On

Possible causes and solutions:

- **No power in the wall socket**
 1. Disconnect the cleaner from the power supply unit.
 2. Unplug the power supply from the wall, wait 30 seconds, and reconnect.
 3. Turn the power on. If the cleaner does not start, try a different socket.
- **Obstacle in the drive system**
 1. Inspect the drive belts for obstructions or debris.
 2. Remove any objects blocking the drive system.
- **Propeller is damaged or clogged with hair**
 1. Unscrew the outlet locker located on the top

outlet.

2. Check if the **propeller is broken or obstructed** and clean if necessary.

Cleaner Moves but Does Not Pump Water

Possible causes and solutions:

- **Dirty filters**
 1. Remove and **clean the filters** thoroughly.
- **Blocked or damaged propeller**
 1. Unscrew the **outlet locker** on the top outlet.
 2. Inspect the propeller for damage or debris and clean if necessary.

Cleaner Pumps Water but Does Not Move

Possible causes and solutions:

- **Obstacle in the drive system**
 1. Inspect the drive belts for tangled debris.
 2. Remove any obstructions.

Cleaner Starts but Shuts Off After a Short Time

Possible causes and solutions:

- **Dirty filters**
 1. Remove and **clean the filters**.
 2. Restart the robotic cleaner.
- **Blocked or damaged propeller**
 1. Unscrew the **outlet locker** on the top outlet.
 2. Inspect the **propeller** for debris or damage and clean if necessary.
- **Obstacle in the drive system**
 1. Check the **drive belts** for any obstructions.
 2. Remove debris if found.

Cleaner Does Not Pick Up Dirt

Possible causes and solutions:

- **Clogged or damaged filters**