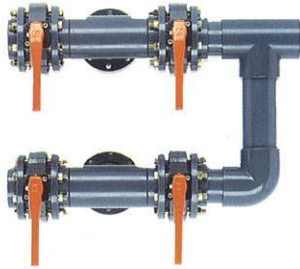


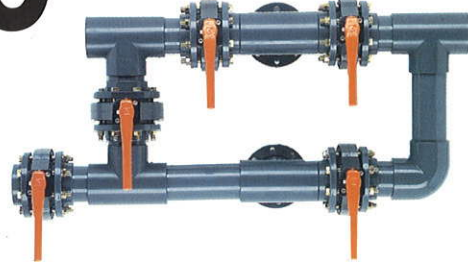
VALVE MANIFOLD

- Manifold reference numbers designate face piping without valves; please order ASTRAL butterfly valves separately.
- Valve manifold is constructed entirely of 150 PSI PVC with flange connections compatible with U.S. sizes.
- 5 valve manifold allows for rinse cycle; eliminates need for additional pool drainage line.

4 VALVES



5 VALVES



SINGLE FILTER							
FILTER				MANIFOLD			
Ø TANK		AREA		Tank Connections	4 VALVES	5 VALVES	Pipe manifold Size
Inches	mm.	Sq./ft.	m ²				
42"	1,050	9.26	0.86	2 1/2"	06741	06754	2 1/2"
47"	1,200	12.16	1.13		06742	06755	
42"	1,050	9.26	0.86	3"	06743	06756	3"
47"	1,200	12.16	1.13		06744	06757	
55"	1,400	16.58	1.54		06745	06758	
47"	1,200	12.16	1.13	4"	06746	06759	4"
55"	1,400	16.58	1.54		06747	06760	
63"	1,600	21.64	2.01		06748	06761	
71"	1,800	27.34	2.54		06749	06762	
79"	2,000	33.80	3.14		06750	06763	
63"	1,600	21.64	2.01	6"	06751	06764	6"
71"	1,800	24.34	2.54		06752	06765	
79"	2,000	33.80	3.14		06753	06766	

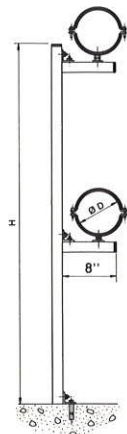
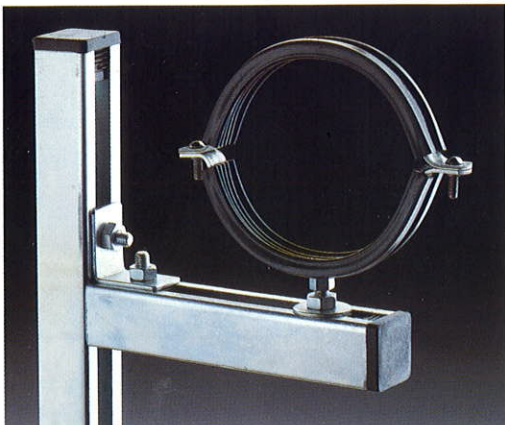
DUAL FILTER SYSTEM							
FILTER				MANIFOLD			
Ø TANK		AREA		Tank Connections	4 VALVES	5 VALVES	Pipe manifold Size
Inches	mm.	Sq./ft.	m ²				
42"	1,050	18.52	1.72	2 1/2"	06767	06782	4"
47"	1,200	24.32	2.26	2 1/2"	06768	06783	
42"	1,050	18.52	1.72	3"	06769	06784	6"
47"	1,200	24.32	2.26		3"	06770	
47"	1,200	24.32	2.26	4"	06771	06786	
55"	1,400	33.16	3.08		3"	06772	
55"	1,400	33.16	3.08	4"	06773	06788	
63"	1,600	43.28	4.02	4"	06774	06789	
71"	1,800	54.68	5.08	4"	06775	06790	
55"	1,400	33.16	3.08	4"	06776	06791	8"
63"	1,600	43.28	4.02		4"	06777	
63"	1,600	43.28	4.02	6"	06778	06793	
71"	1,800	54.68	5.08		6"	06779	
79"	2,000	67.6	6.28	4"	06780	06795	
79"	2,000	67.6	6.28	6"	06781	06796	

VALVE MANIFOLD SUPPORT

- For all filter sizes, from pipe size of 2 1/2" up to 8".

Made of zinc-plated steel tubing, with anti-vibration arms and fixing screws.

- Each support consist of one vertical support, two horizontal supports with clamp arm, and height regulator.
- The valve manifold support is included when valve manifold is ordered.



Ø MANIFOLD	MANIFOLD SUPPORT			WALL SUPPORTS	
	H (ft)	4 VALVES	5 VALVES		
2 1/2"	4'6"	00843		00855	
3"	4'6"	00844		00856	
4"	4'6"	00845		00857	
6"	4'6"	5'9"	00848	00851	00860
8"	4'6"	5'9"	00850	00853	00862