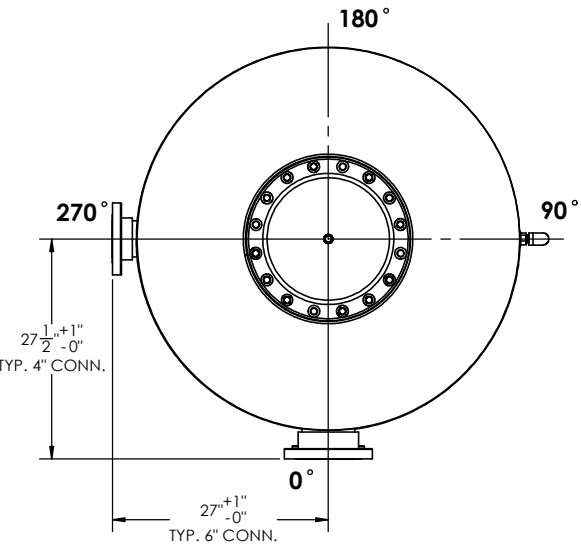
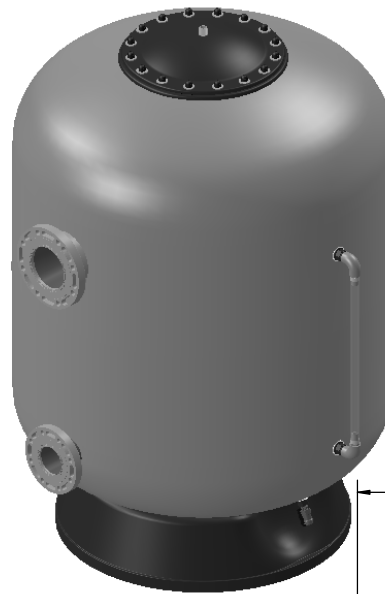


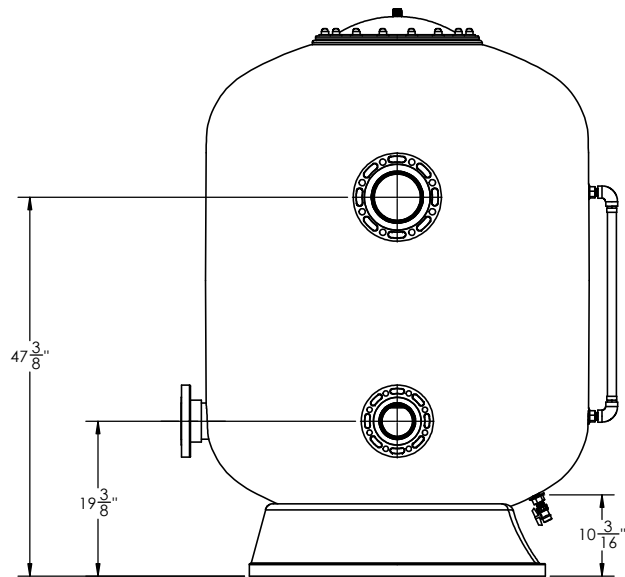
8 7 6 5 4 3 2 1



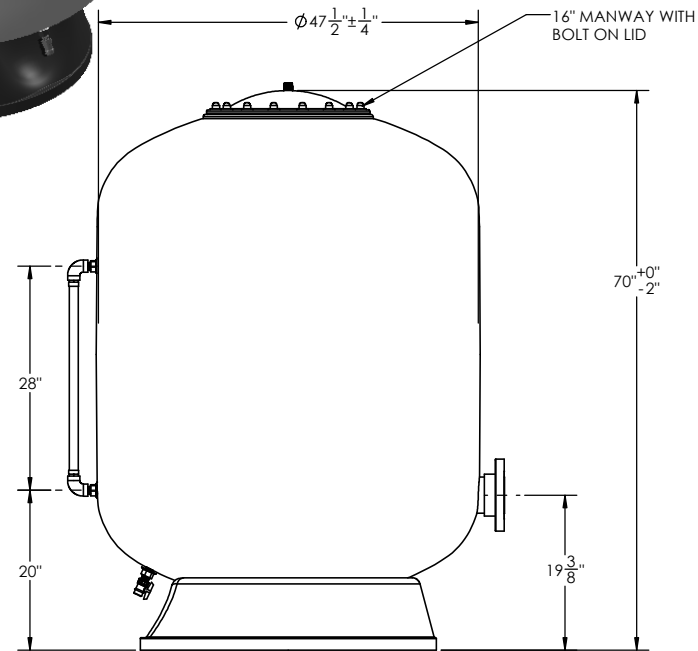
PLAN VIEW



NOTE:
1. FLOAT VALVE IN THE
UPWARD POSITION IS
80% CLOSED.
FLOAT VALVE IN THE
DOWNWARD POSITION
IS 100% OPEN



FRONT ELEVATION



SIDE ELEVATION

| APPROVAL REQUIRED | |
|-------------------|--------------------------|
| Approved as Drawn | <input type="checkbox"/> |
| Approved as Noted | <input type="checkbox"/> |
| Not Approved | <input type="checkbox"/> |
| Approved By: | _____ |
| Date Approved: | _____ |

*BY SIGNING THIS DRAWING THE SIGNEE ACKNOWLEDGES THAT THE CURRENT ORDER OR ANY FUTURE ORDERS PLACED USING THIS SPECIFIC PART NUMBER WILL REFLECT ONLY THAT DEFINED IN SIGNED DRAWING.

GENERAL NOTES:

1. FILTER MADE FROM HIGH STRENGTH FIBERGLASS AND RESINS
2. ALL INTERNAL COMPONENTS ARE CONSTRUCTED OF SCHEDULE 80 PVC.
3. EXTERNAL HARDWARE TO BE ZINC AS STANDARD, UPGRADES ARE AVAILABLE UPON REQUEST.
4. INTERNAL HARDWARE TO BE 304 STAINLESS STEEL.
5. GASKETS SUPPLIED AS STANDARD ARE RED RUBBER AND EPDM.
6. HYDROSTATIC TESTING TO 1.5 x VESSEL DESIGN PRESSURE.
7. CONCRETE SLAB TO BE DESIGNED BY OTHERS.
8. SOME DETAILS SHOWN IN DRAWING ARE FOR REFERENCE ONLY. ONLY DIMENSIONED DETAILS ARE IN ACTUAL LOCATIONS
9. DESIGN AND/OR SPECIFICATIONS ARE SUBJECT TO CHANGE WITHOUT NOTICE. IF QUESTIONS ARISE, CONTACT YOUR SALES REPRESENTATIVE OR FLUIDRA USA FOR CLARIFICATION.

| 47" VERTICAL BALANCE TANK WITH 6" CONNECTIONS, 400 GAL. | | | | |
|--|------------|-------------|--------------|---------|
| DWG. NO. | | REV | SHEET 1 OF 1 | |
| 21040 | | 0 | | |
| DRAWN BY: | DATE: | SCALE: | SIZE | CHECKED |
| MS | 04/21/2015 | SCALE: 1:24 | C | |

| REV | DATE | DESCRIPTION | BY: |
|--|------|-------------|-----|
| UNLESS OTHERWISE SPECIFIED: DIMENSIONS ARE IN INCHES TOLERANCES: FRACTIONAL ± ANGULAR: MACH ± BEND ± TWO PLACE DECIMAL ± THREE PLACE DECIMAL ± | | | |
| FLUIDRA www.fluidra.us 8525 MALLORY ROAD JACKSONVILLE, FL 32220 (904) 378-0999 | | | |
| ASTRALPOOL | | | |

PROPRIETARY AND CONFIDENTIAL
This drawing is the property of Fluidra U.S.A. and contains confidential information belonging to the same. This drawing is made available on the specific condition that neither it nor the information contained on it will be disclosed or made available without written consent of Fluidra U.S.A.