

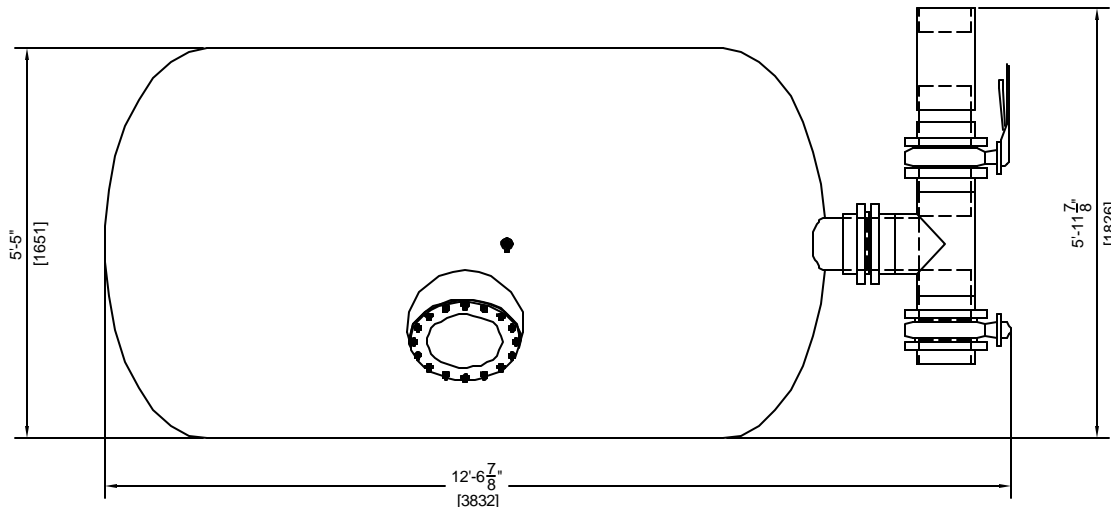
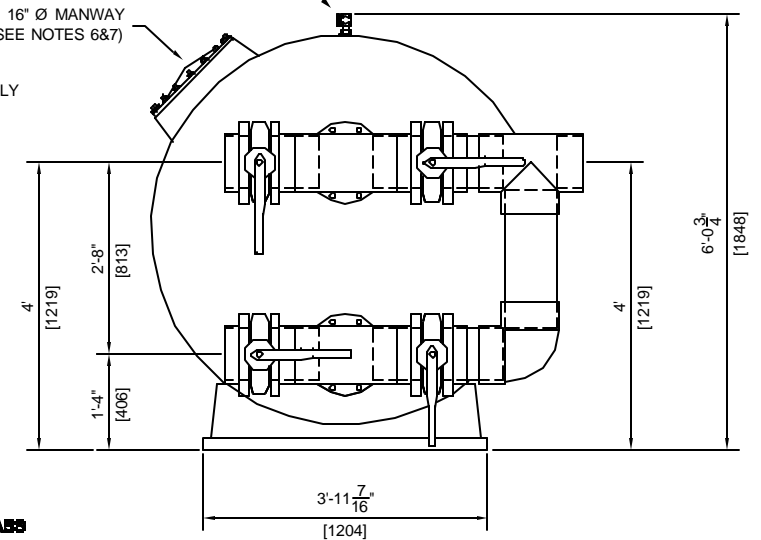
GENERAL NOTES:

1. MEDIA NOT INCLUDED WITH FILTER
2. CONCRETE SLAB TO BE DESIGNED BY OTHERS
3. FILTER MADE FROM HIGH STRENGTH FIBERGLASS AND RESIN
4. FILTERS HAVE UV STABILIZED CLEAR COAT
5. ALL INTERNAL COMPONENTS ARE CONSTRUCTED OF SCHEDULE 80 PVC.
6. MANHOLE CAN BE LOCATED ON EITHER SIDE OF FILTER. PLEASE SPECIFY AT TIME OF ORDER.
7. SAND DRAIN AND WATER DRAIN ARE PLACED ON THE SAME SIDE AS THE MANHOLE.

8" BUTTERFLY VALVE

16" Ø MANWAY
(SEE NOTES 6&7)

3/4" MANUAL AIR PURGE



FILTER DATA

TOTAL SURFACE AREA:	51 SQ. FT.
MAX WORKING PRESSURE:	50 PSI.
MAX FLOW RATE:	20 GPM / SQ. FT.

MEDIA REQUIREMENTS

SAND:	6,100 LBS
GRAVEL:	3,550 LBS

WEIGHTS

FILTER SHIPPING WEIGHT	1,540 LBS
FILTER OPERATING WEIGHT:	19,775 LBS

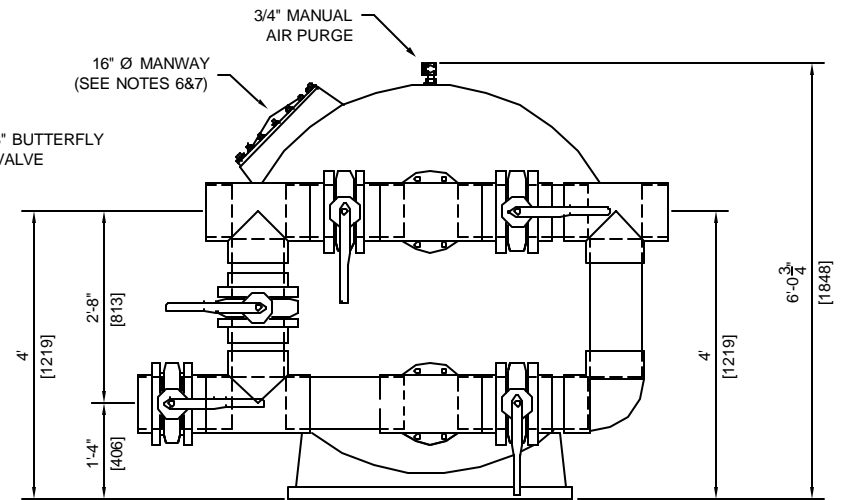
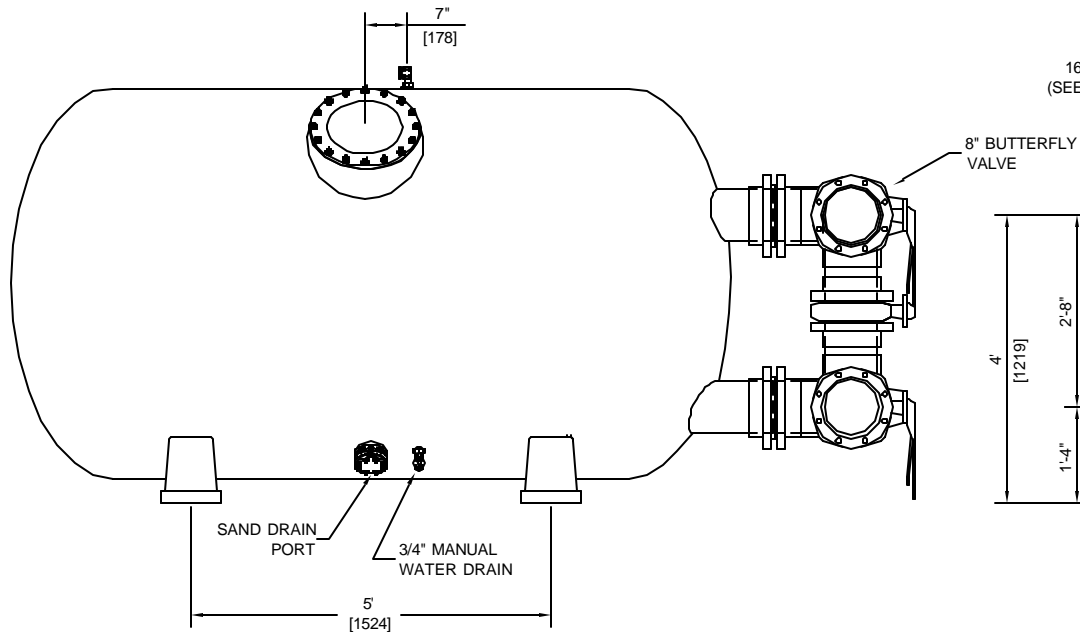
ASTRAL POOL



USA

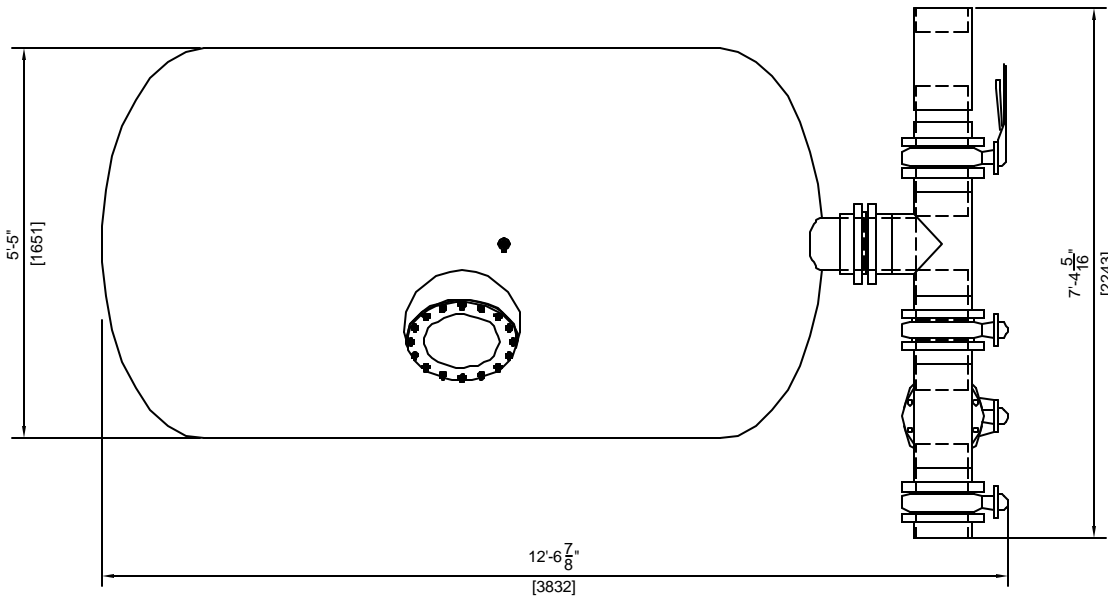
HORIZONTAL SAND FILTER (20903)
63"x120" WITH 8" 4 VALVE MANIFOLD

DRAWN BY:	MM	DWG. NO:	20903-2	REV:	
SCALE: 3/8" = 1'		DATE:	10/31/02	CHECKED:	



GENERAL NOTES:

1. MEDIA NOT INCLUDED WITH FILTER
2. CONCRETE SLAB TO BE DESIGNED BY OTHERS
3. FILTER MADE FROM HIGH STRENGTH FIBERGLASS AND RESINS
4. FILTERS HAVE UV STABILIZED CLEAR COAT
5. ALL INTERNAL COMPONENTS ARE CONSTRUCTED OF SCHEDULE 80 PVC
6. MANHOLE CAN BE LOCATED ON EITHER SIDE OF FILTER. PLEASE SPECIFY AT TIME OF ORDER.
7. SAND DRAIN AND WATER DRAIN ARE PLACED ON THE SAME SIDE AS THE MANHOLE.



FILTER DATA

TOTAL SURFACE AREA:	51 SQ. FT.
MAX WORKING PRESSURE:	50 PSI.
MAX FLOW RATE:	20 GPM / SQ. FT.

MEDIA REQUIREMENTS

SAND:	6,100 LBS
GRAVEL:	3,550 LBS

WEIGHTS

FILTER SHIPPING WEIGHT	1,540 LBS
FILTER OPERATING WEIGHT:	19,890 LBS

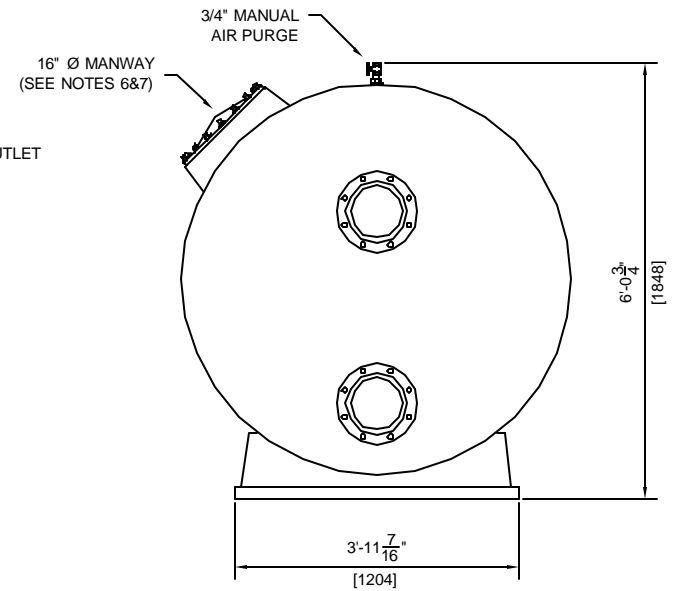
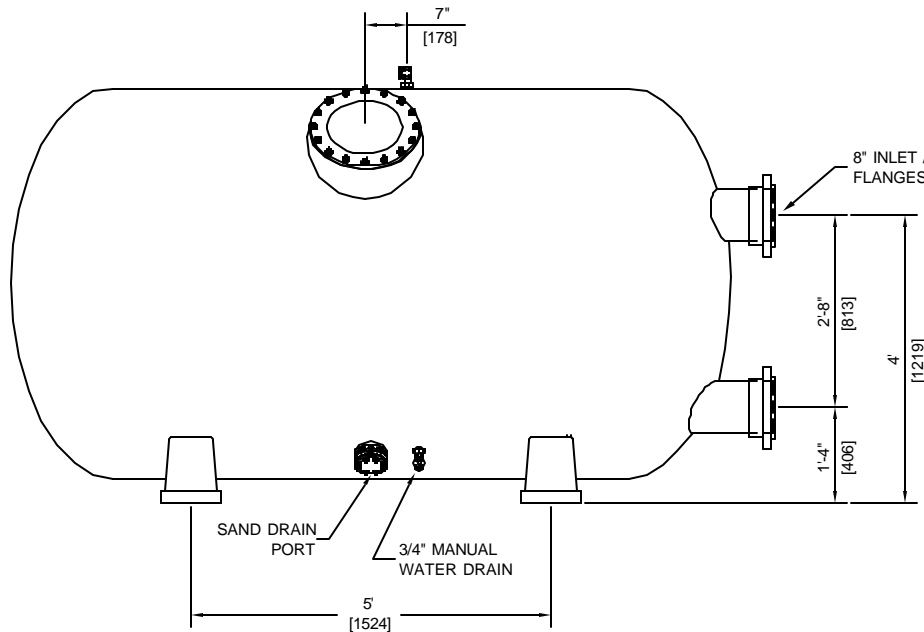
ASTRAL POOL



USA

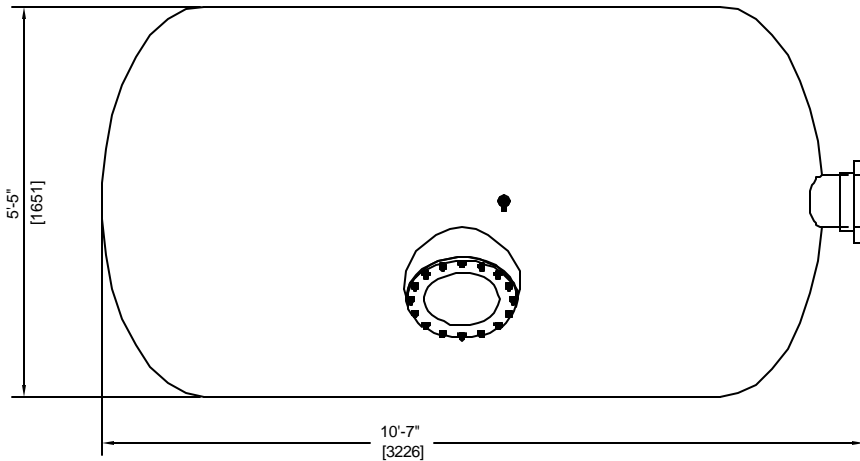
HORIZONTAL SAND FILTER (20903)
63"x120" WITH 8" 5 VALVE MANIFOLD

DRAWN BY:	MM	DWG. NO:	20903-3	REV:	
SCALE: 3/8" = 1'		DATE:	10/31/02	CHECKED:	



GENERAL NOTES:

1. MEDIA NOT INCLUDED WITH FILTER
2. CONCRETE SLAB TO BE DESIGNED BY OTHERS
3. FILTER MADE FROM HIGH STRENGTH FIBERGLASS AND RESINS
4. FILTERS HAVE UV STABILIZED CLEAR COAT
5. ALL INTERNAL COMPONENTS ARE CONSTRUCTED OF SCHEDULE 80 PVC
6. MANHOLE CAN BE LOCATED ON EITHER SIDE OF FILTER. PLEASE SPECIFY AT TIME OF ORDER.
7. SAND DRAIN AND WATER DRAIN ARE PLACED ON THE SAME SIDE AS THE MANHOLE.



FILTER DATA

TOTAL SURFACE AREA:	51 SQ. FT.
MAX WORKING PRESSURE:	50 PSI.
MAX FLOW RATE:	20 GPM / SQ. FT.

MEDIA REQUIREMENTS

SAND:	6,100 LBS
GRAVEL:	3,550 LBS

WEIGHTS

FILTER SHIPPING WEIGHT:	1,540 LBS
FILTER OPERATING WEIGHT:	19,455 LBS

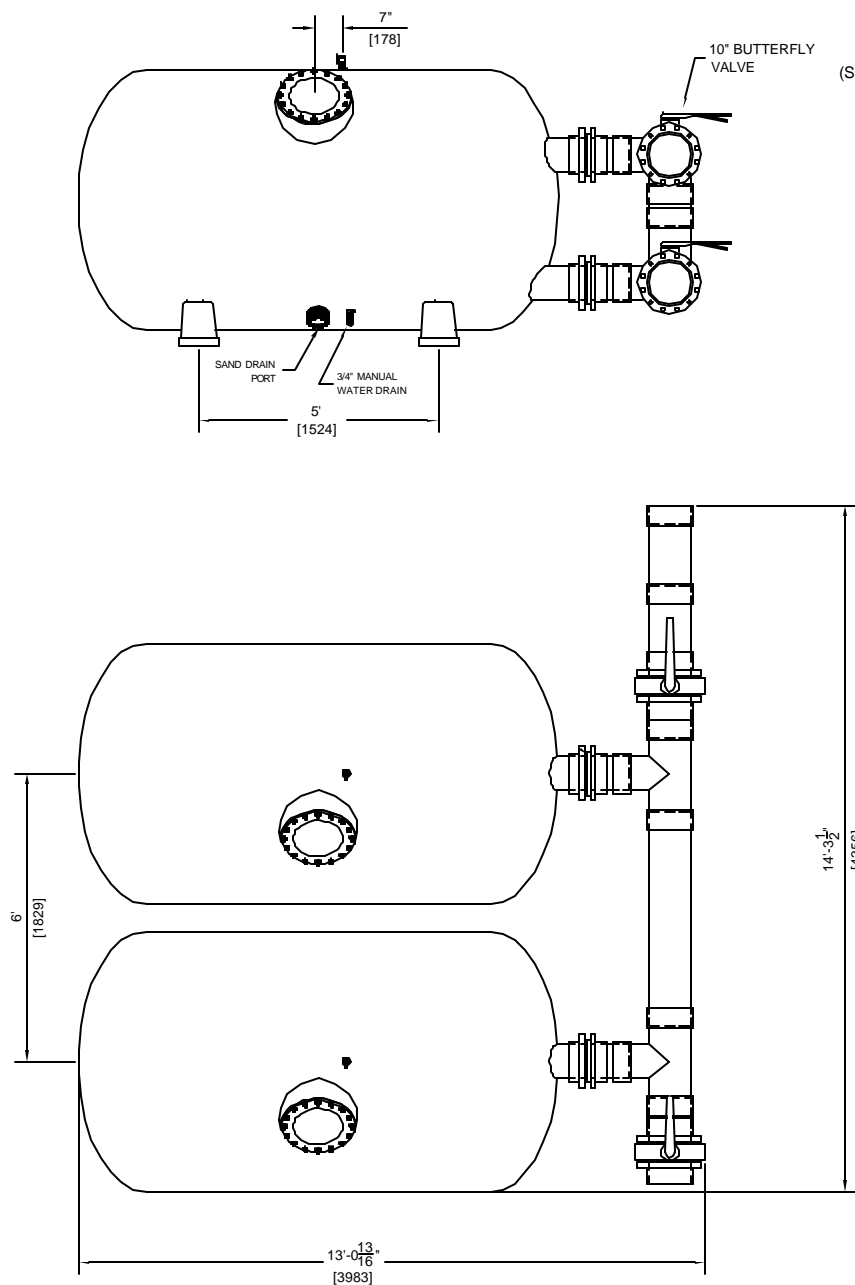
ASTRAL POOL



USA

HORIZONTAL SAND FILTER (20903)
63"x120" WITH 8" CONNECTIONS

DRAWN BY:	MM	DWG. NO:	20903	REV:	
SCALE: 3/8" = 1'		DATE:	10/31/02	CHECKED:	



GENERAL NOTES:

1. MEDIA NOT INCLUDED WITH FILTER
2. CONCRETE SLAB TO BE DESIGNED BY OTHERS
3. FILTER MADE FROM HIGH STRENGTH FIBERGLASS AND RESINS
4. FILTERS HAVE UV STABILIZED CLEAR COAT
5. ALL INTERNAL COMPONENTS ARE CONSTRUCTED OF SCHEDULE 80 PVC.
6. MANHOLE CAN BE LOCATED ON EITHER SIDE OF FILTER. PLEASE SPECIFY AT TIME OF ORDER.
7. SAND DRAIN AND WATER DRAIN ARE PLACED ON THE SAME SIDE AS THE MANHOLE.

FILTER DATA

TOTAL SURFACE AREA:	102 SQ. FT.
MAX WORKING PRESSURE:	50 PSI.
MAX FLOW RATE:	20 GPM / SQ. FT.

MEDIA REQUIREMENTS

SAND:	6,100 LBS EA
GRAVEL:	3,550 LBS EA

WEIGHTS

FILTER SHIPPING WEIGHT:	1,540 LBS EA
FILTER OPERATING WEIGHT:	42,200 LBS

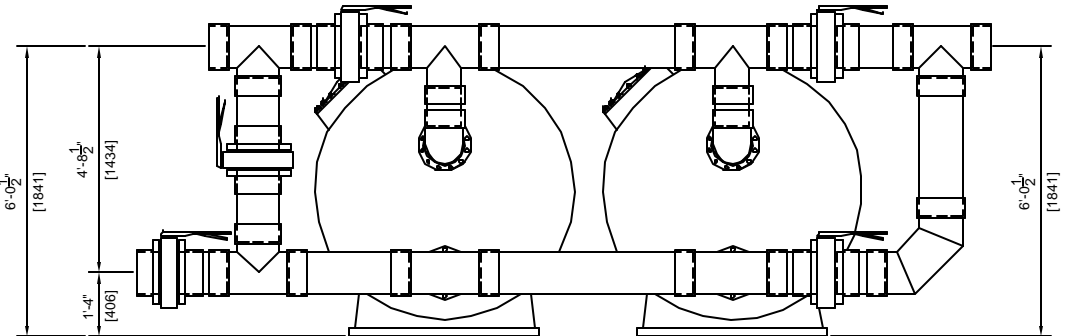
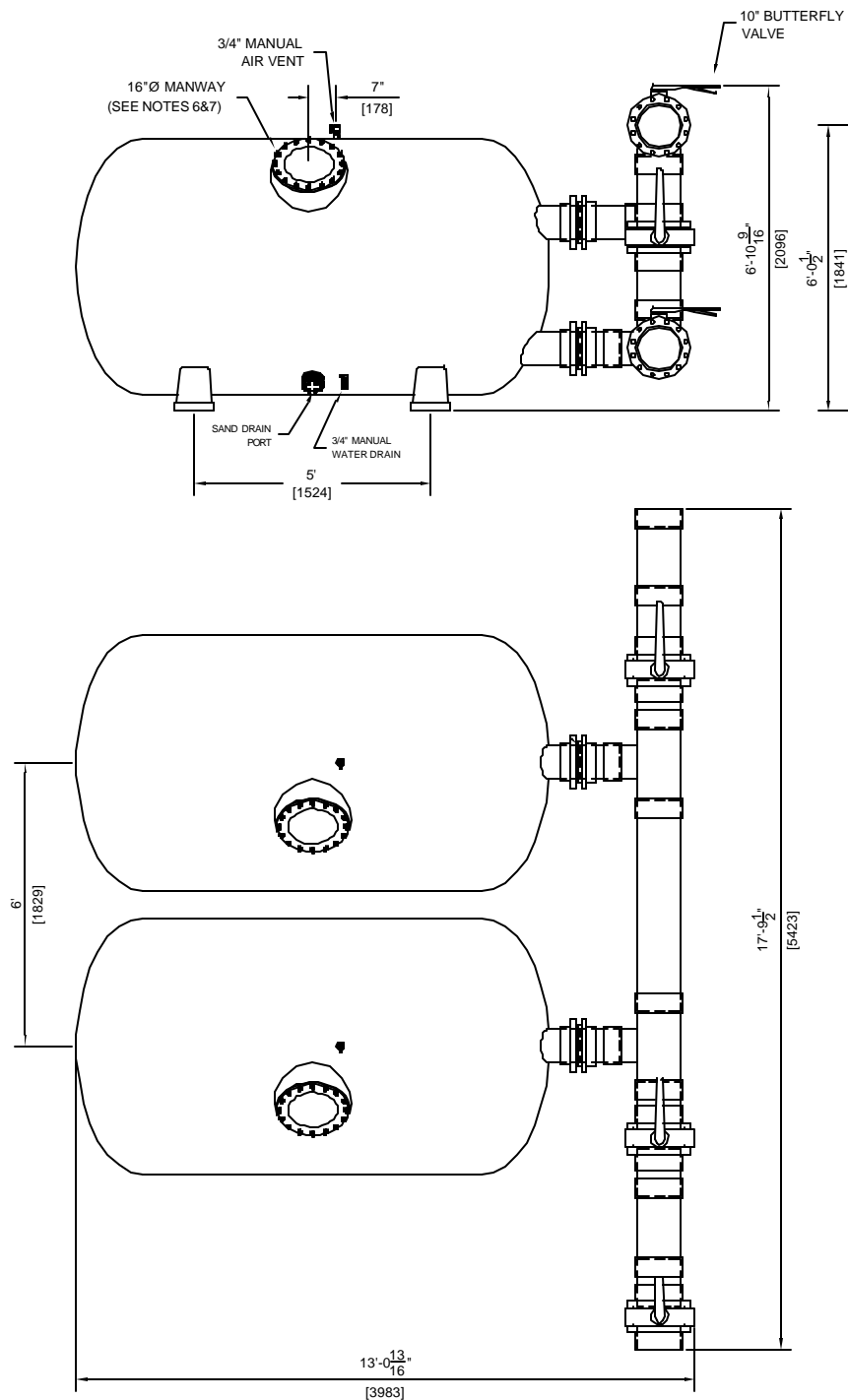
ASTRAL POOL



USA

DUAL HORIZONTAL FILTER (20903)
63"x120" W/ 10" 4 VALVE MANIFOLD

DRAWN BY:	MM	DWG. NO:	20903-5	REV:
SCALE: 1/4" = 1'	DATE: XX/XX/XX	CHECKED:		



GENERAL NOTES:

1. MEDIA NOT INCLUDED WITH FILTER
2. CONCRETE SLAB TO BE DESIGNED BY OTHERS
3. FILTER MADE FROM HIGH STRENGTH FIBERGLASS AND RESINS
4. FILTERS HAVE UV STABILIZED CLEAR COAT
5. ALL INTERNAL COMPONENTS ARE CONSTRUCTED OF SCHEDULE 80 PVC.
6. MANHOLE CAN BE LOCATED ON EITHER SIDE OF FILTER. PLEASE SPECIFY AT TIME OF ORDER.
7. SAND DRAIN AND WATER DRAIN ARE PLACED ON THE SAME SIDE AS THE MANHOLE.

FILTER DATA

TOTAL SURFACE AREA:	102 SQ. FT.
MAX WORKING PRESSURE:	50 PSI.
MAX FLOW RATE:	20 GPM / SQ. FT.

MEDIA REQUIREMENTS

SAND:	6,100 LBS EA
GRAVEL:	3,550 LBS EA

WEIGHTS

FILTER SHIPPING WEIGHT	1,540 LBS EA
FILTER OPERATING WEIGHT:	42,900 LBS

ASTRAL POOL



USA

DUAL HORIZONTAL FILTER (20903)
63"x120" W/ 10" 5 VALVE MANIFOLD

DRAWN BY:	MM	DWG. NO:	20903-6	REV:
SCALE: 1/4" = 1'	DATE:	10/31/02	CHECKED:	