

GENERAL NOTES:

1. MEDIA NOT INCLUDED WITH FILTER
2. CONCRETE SLAB TO BE DESIGNED BY OTHERS
3. FILTER MADE FROM HIGH STRENGTH FIBERGLASS AND RESINS
4. FILTERS HAVE UV STABILIZED CLEAR COAT
5. ALL INTERNAL COMPONENTS ARE CONSTRUCTED OF SCHEDULE 80 PVC
6. MANHOLE CAN BE LOCATED ON EITHER SIDE OF FILTER. PLEASE SPECIFY AT TIME OF ORDER.
7. SAND DRAIN AND WATER DRAIN ARE PLACED ON THE SAME SIDE AS THE MANHOLE.

FILTER DATA

TOTAL SURFACE AREA:	32 SQ. FT.
MAX WORKING PRESSURE:	50 PSI.
MAX FLOW RATE:	20 GPM / SQ. FT.

MEDIA REQUIREMENTS

SAND:	3,800 LBS
GRAVEL:	2,200 LBS

WEIGHTS

FILTER SHIPPING WEIGHT:	880 LBS
FILTER OPERATING WEIGHT:	12,975 LBS

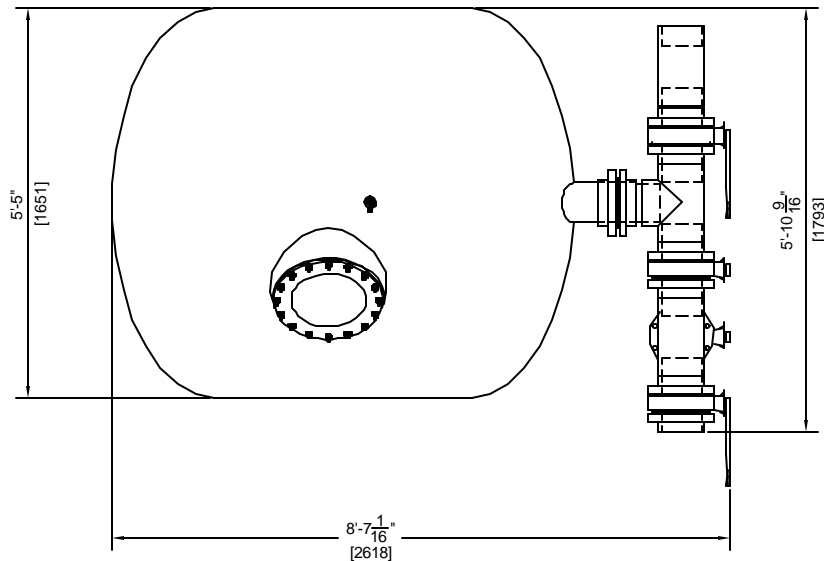
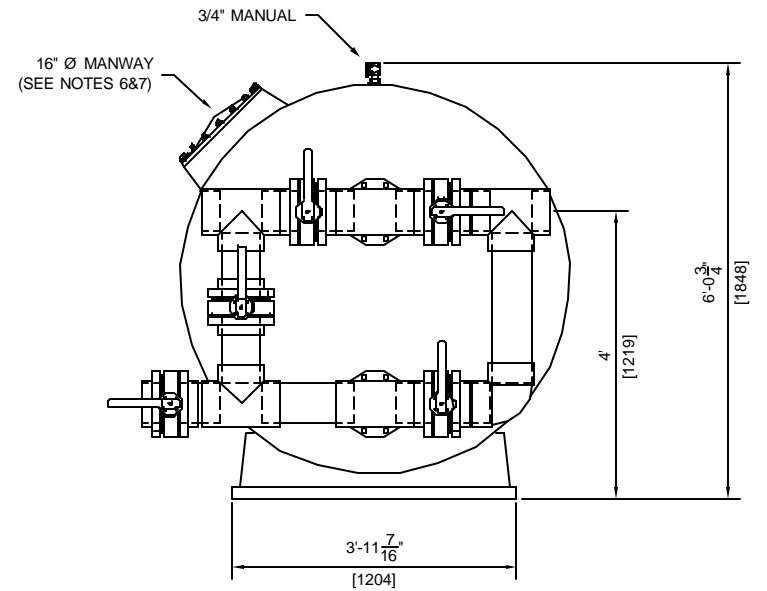
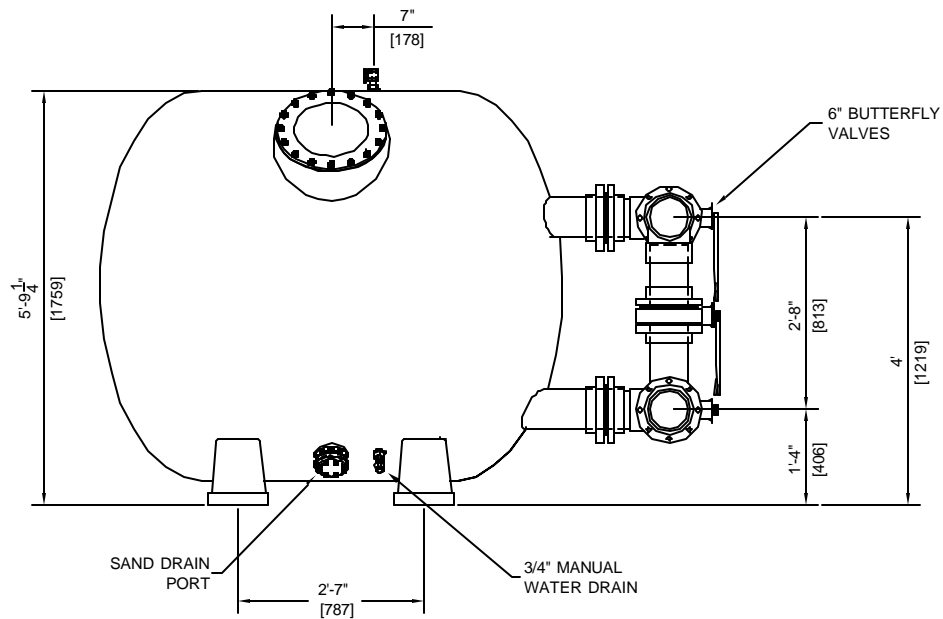
ASTRAL POOL



USA

HORIZONTAL SAND FILTER (20900)
63"x75" WITH 6" 4 VALVE MANIFOLD

DRAWN BY:	MM	DWG. NO:	20900-2	REV:	
SCALE: 3/8" = 1'		DATE:	10/21/02	CHECKED:	



GENERAL NOTES:

1. MEDIA NOT INCLUDED WITH FILTER
2. CONCRETE SLAB TO BE DESIGNED BY OTHERS
3. FILTER MADE FROM HIGH STRENGTH FIBERGLASS AND RESINS
4. FILTERS HAVE UV STABILIZED CLEAR COAT
5. ALL INTERNAL COMPONENTS ARE CONSTRUCTED OF SCHEDULE 80 PVC.
6. MANHOLE CAN BE LOCATED ON EITHER SIDE OF FILTER. PLEASE SPECIFY AT TIME OF ORDER.
7. SAND DRAIN AND WATER DRAIN ARE PLACED ON THE SAME SIDE AS THE MANHOLE.

FILTER DATA

TOTAL SURFACE AREA:	32 SQ. FT.
MAX WORKING PRESSURE:	50 PSI.
MAX FLOW RATE:	20 GPM / SQ. FT.

MEDIA REQUIREMENTS

SAND:	3,800 LBS
GRAVEL:	2,200 LBS

WEIGHTS

FILTER SHIPPING WEIGHT:	880 LBS
FILTER OPERATING WEIGHT:	12,550 LBS

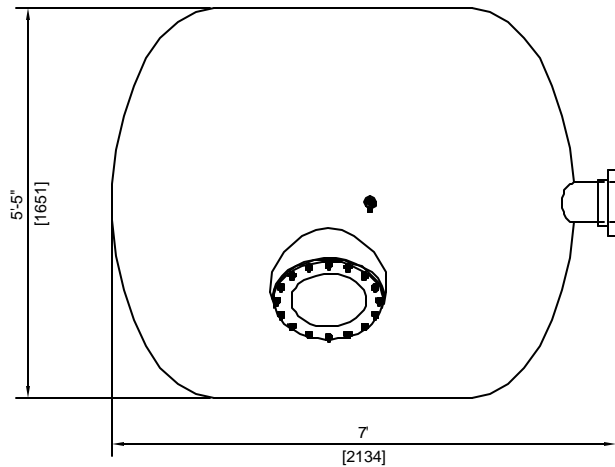
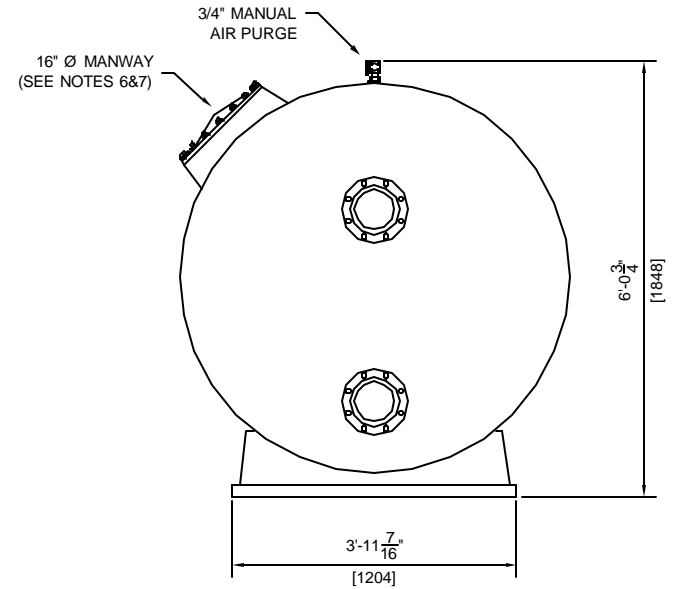
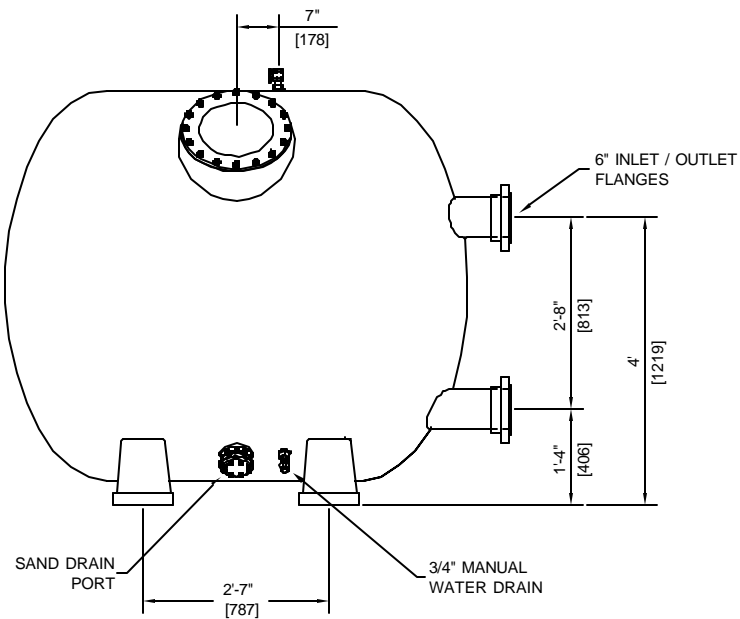
ASTRAL POOL



USA

HORIZONTAL SAND FILTER (20900)
63"x75" WITH 6" 5 VALVE MANIFOLD

DRAWN BY:	MM	DWG. NO:	20900-3	REV:	
SCALE: 3/8" = 1'		DATE:	10/22/02	CHECKED:	



GENERAL NOTES:

1. MEDIA NOT INCLUDED WITH FILTER
2. CONCRETE SLAB TO BE DESIGNED BY OTHERS
3. FILTER MADE FROM HIGH STRENGTH FIBERGLASS AND RESINS
4. FILTERS HAVE UV STABILIZED CLEAR COAT
5. ALL INTERNAL COMPONENTS ARE CONSTRUCTED OF SCHEDULE 80 PVC.
6. MANHOLE CAN BE LOCATED ON EITHER SIDE OF FILTER. PLEASE SPECIFY AT TIME OF ORDER.
7. SAND DRAIN AND WATER DRAIN ARE PLACED ON THE SAME SIDE AS THE MANHOLE.

FILTER DATA

TOTAL SURFACE AREA:	32 SQ. FT.
MAX WORKING PRESSURE:	50 PSI.
MAX FLOW RATE:	20 GPM / SQ. FT.

MEDIA REQUIREMENTS

SAND:	3,800 LBS
GRAVEL:	2,200 LBS

WEIGHTS

FILTER SHIPPING WEIGHT	880 LBS
FILTER OPERATING WEIGHT:	12,100 LBS

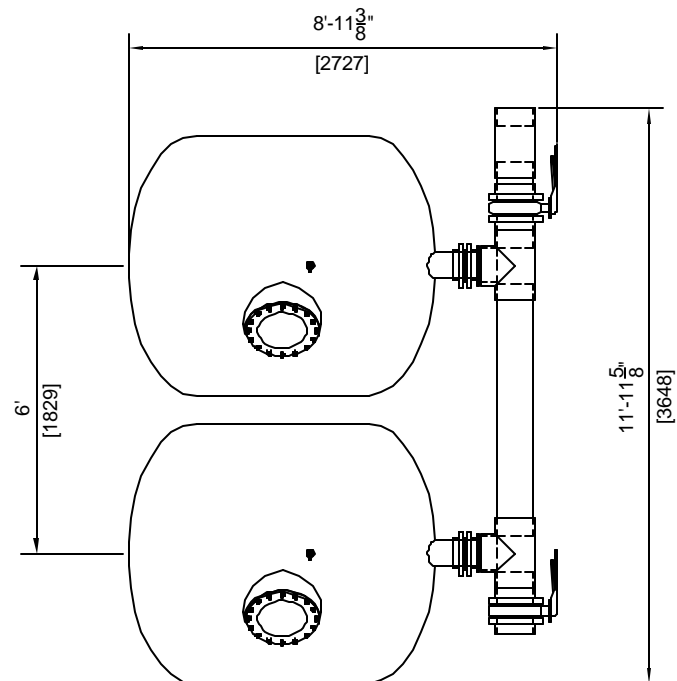
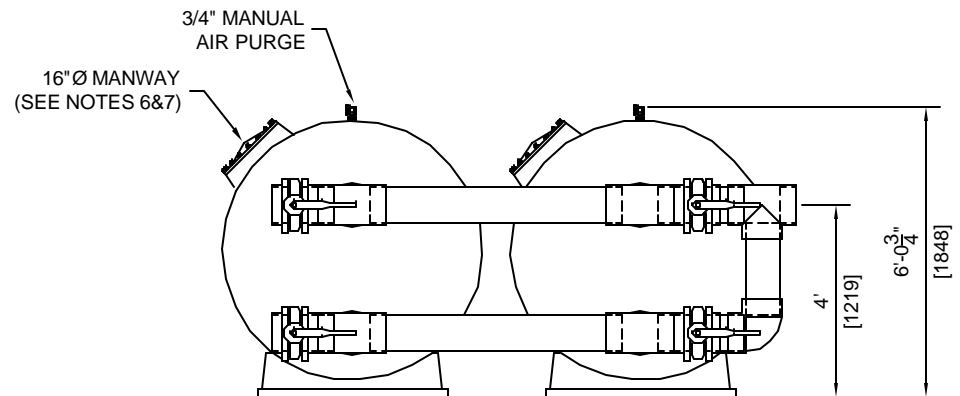
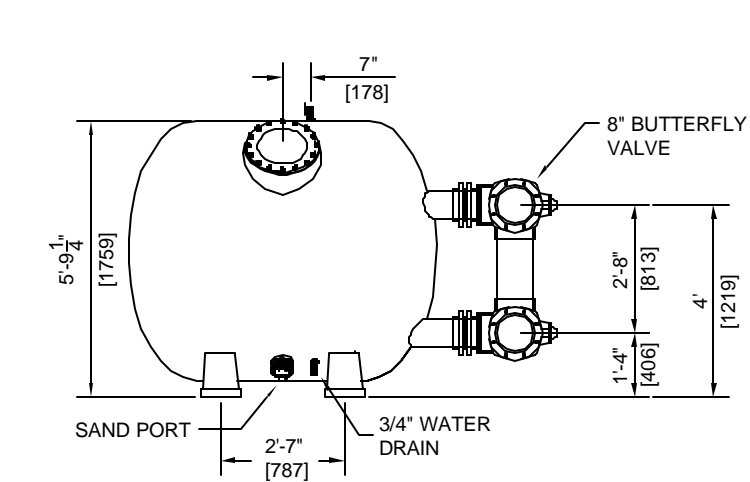
ASTRAL POOL



USA

HORIZONTAL SAND FILTER (20900)
63"x75" WITH 6" CONNECTIONS

DRAWN BY:	MM	DWG. NO:	20900	REV:	
SCALE: 3/8" = 1'		DATE:	10/21/02	CHECKED:	



GENERAL NOTES:

1. MEDIA NOT INCLUDED WITH FILTER
2. CONCRETE SLAB TO BE DESIGNED BY OTHERS
3. FILTER MADE FROM HIGH STRENGTH FIBERGLASS AND RESINS
4. FILTERS HAVE UV STABILIZED CLEAR COAT
5. ALL INTERNAL COMPONENTS ARE CONSTRUCTED OF SCHEDULE 80 PVC.
6. MANHOLE CAN BE LOCATED ON EITHER SIDE OF FILTER. PLEASE SPECIFY AT TIME OF ORDER.
7. SAND DRAIN AND WATER DRAIN ARE PLACED ON THE SAME SIDE AS THE MANHOLE.

FILTER DATA	
TOTAL SURFACE AREA:	64 SQ. FT.
MAX WORKING PRESSURE:	50 PSI.
MAX FLOW RATE:	20 GPM / SQ. FT.
MEDIA REQUIREMENTS	
SAND:	3,800 LBS EA.
GRAVEL:	2,200 LBS EA.
WEIGHTS	
FILTER SHIPPING WEIGHT	880 LBS EA.
FILTER OPERATING WEIGHT:	25,500 LBS

ASTRAL POOL



USA

DUAL HORIZONTAL FILTER (20900)
63"x75" W/ 8" 4-VALVE MANIFOLD

DRAWN BY:	MM	DWG. NO:	20900-5	REV:
SCALE: 1/4" = 1'	DATE:	10/22/02	CHECKED:	