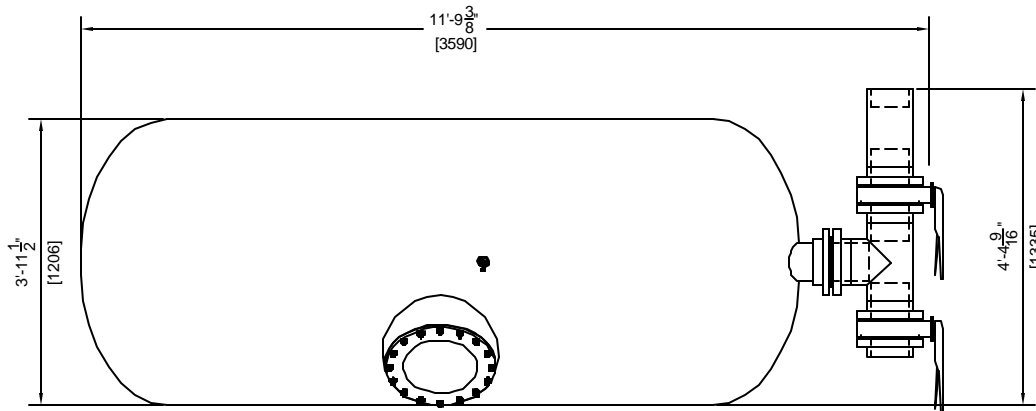


**GENERAL NOTES:**

1. MEDIA NOT INCLUDED WITH FILTER
2. CONCRETE SLAB TO BE DESIGNED BY OTHERS
3. FILTER MADE FROM HIGH STRENGTH FIBERGLASS AND RESINS
4. FILTERS HAVE UV STABILIZED CLEAR COAT
5. ALL INTERNAL COMPONENTS ARE CONSTRUCTED OF SCHEDULE 80 PVC.
6. MANHOLE CAN BE LOCATED ON EITHER SIDE OF FILTER. PLEASE SPECIFY AT TIME OF ORDER.
7. SAND DRAIN AND WATER DRAIN ARE PLACED ON THE SAME SIDE AS THE MANHOLE.

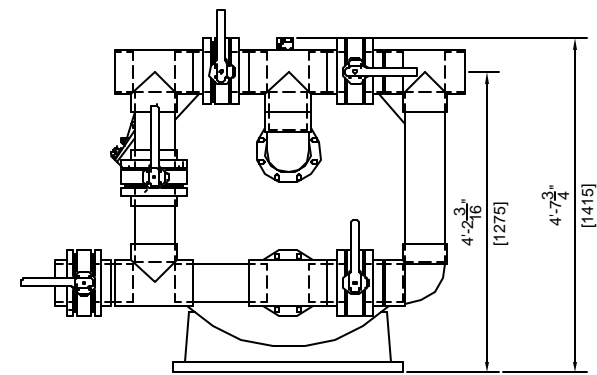
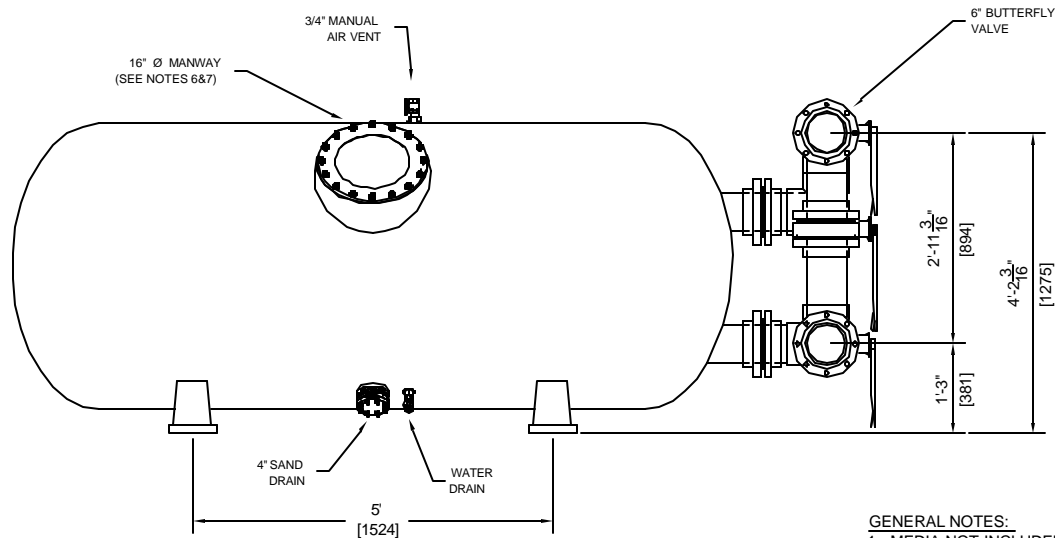


FILTER DATA	
TOTAL SURFACE AREA:	38 SQ. FT.
MAX WORKING PRESSURE:	50 PSI.
MAX FLOW RATE:	20 GPM / SQ. FT.
MEDIA REQUIREMENTS	
SAND:	3,500 LBS
GRAVEL:	2,100 LBS
WEIGHTS	
<b>FILTER SHIPPING WEIGHT</b>	<b>957 LBS</b>
<b>FILTER OPERATING WEIGHT:</b>	<b>11,800 LBS</b>



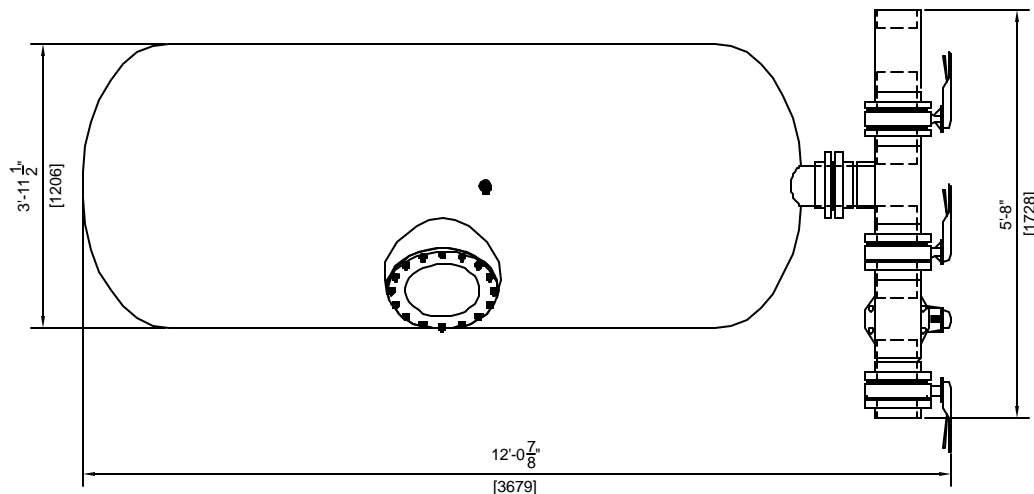
**HORIZONTAL SAND FILTER (20899)  
48"X118" WITH 6" 4 VALVE MANIFOLD**

DRAWN BY:	<b>MM</b>	DWG. NO:	<b>20899-2</b>	REV:	
SCALE: 3/8" = 1'		DATE:	<b>10/21/02</b>	CHECKED:	



**GENERAL NOTES:**

1. MEDIA NOT INCLUDED WITH FILTER
2. CONCRETE SLAB TO BE DESIGNED BY OTHERS
3. FILTER MADE FROM HIGH STRENGTH FIBERGLASS AND RESINS
4. FILTERS HAVE UV STABILIZED CLEAR COAT
5. ALL INTERNAL COMPONENTS ARE CONSTRUCTED OF SCHEDULE 80 PVC.
6. MANHOLE CAN BE LOCATED ON EITHER SIDE OF FILTER. PLEASE SPECIFY AT TIME OF ORDER.
7. SAND DRAIN AND WATER DRAIN ARE PLACED ON THE SAME SIDE AS THE MANHOLE.



FILTER DATA	
TOTAL SURFACE AREA:	38 SQ. FT.
MAX WORKING PRESSURE:	50 PSI.
MAX FLOW RATE:	20 GPM / SQ. FT.
MEDIA REQUIREMENTS	
SAND:	3,500 LBS
GRAVEL:	2,100 LBS
WEIGHTS	
FILTER SHIPPING WEIGHT:	957 LBS
FILTER OPERATING WEIGHT:	11,800 LBS

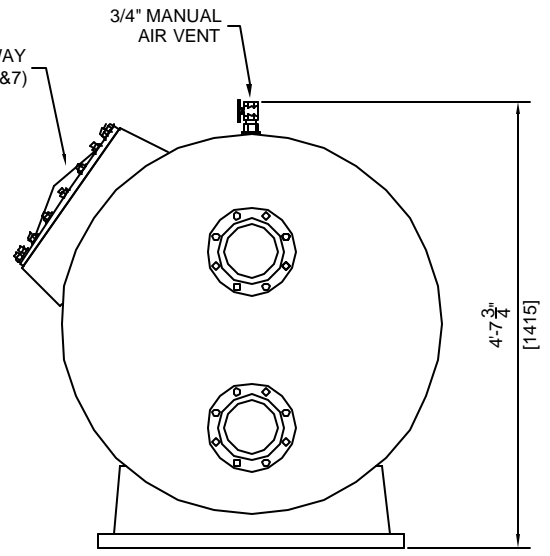
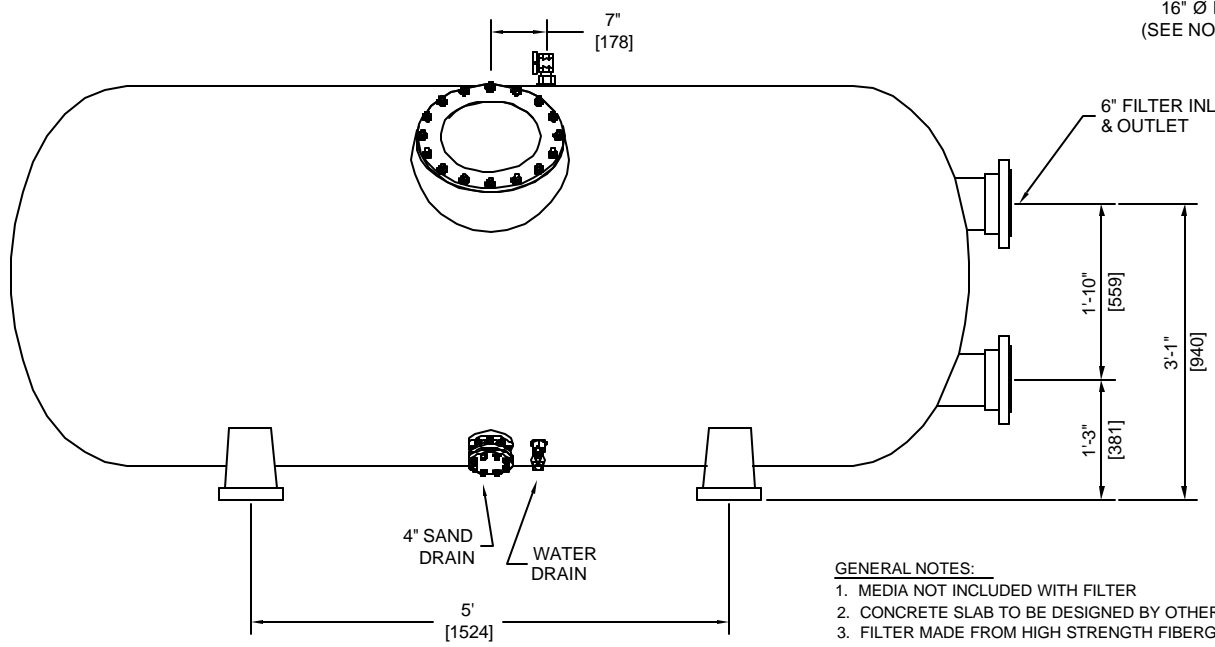
**ASTRAL POOL**



USA

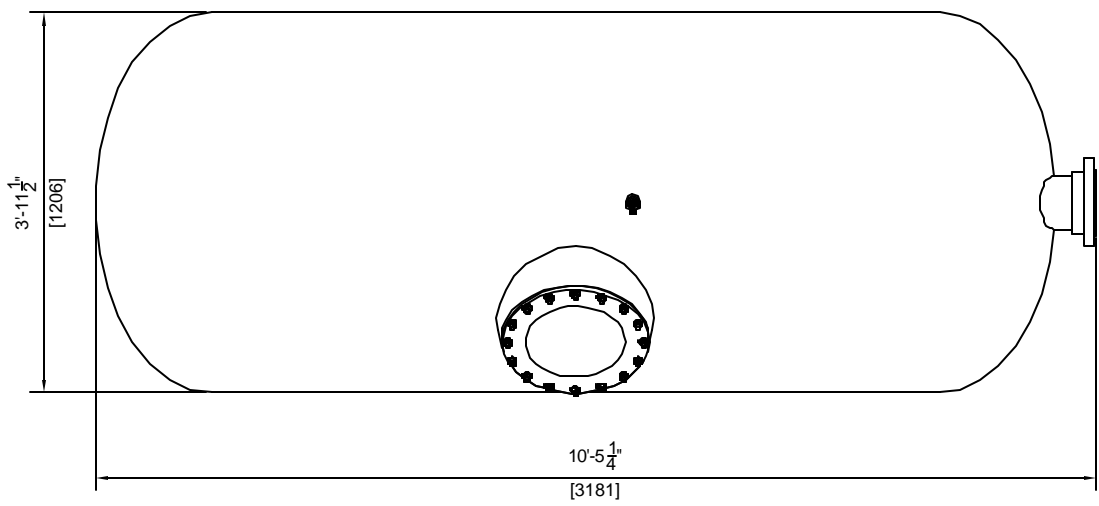
**HORIZONTAL SAND FILTER (20899)  
48"X118" WITH 6" 5 VALVE MANIFOLD**

DRAWN BY:	<b>MM</b>	DWG. NO:	<b>20899-3</b>	REV:	
SCALE: 3/8" = 1'		DATE:	<b>10/21/02</b>	CHECKED:	



**GENERAL NOTES:**

1. MEDIA NOT INCLUDED WITH FILTER
2. CONCRETE SLAB TO BE DESIGNED BY OTHERS
3. FILTER MADE FROM HIGH STRENGTH FIBERGLASS AND RESINS
4. FILTERS HAVE UV STABILIZED CLEAR COAT
5. ALL INTERNAL COMPONENTS ARE CONSTRUCTED OF SCHEDULE 80 PVC.
6. MANHOLE CAN BE LOCATED ON EITHER SIDE OF FILTER. PLEASE SPECIFY AT TIME OF ORDER.
7. SAND DRAIN AND WATER DRAIN ARE PLACED ON THE SAME SIDE AS THE MANHOLE.

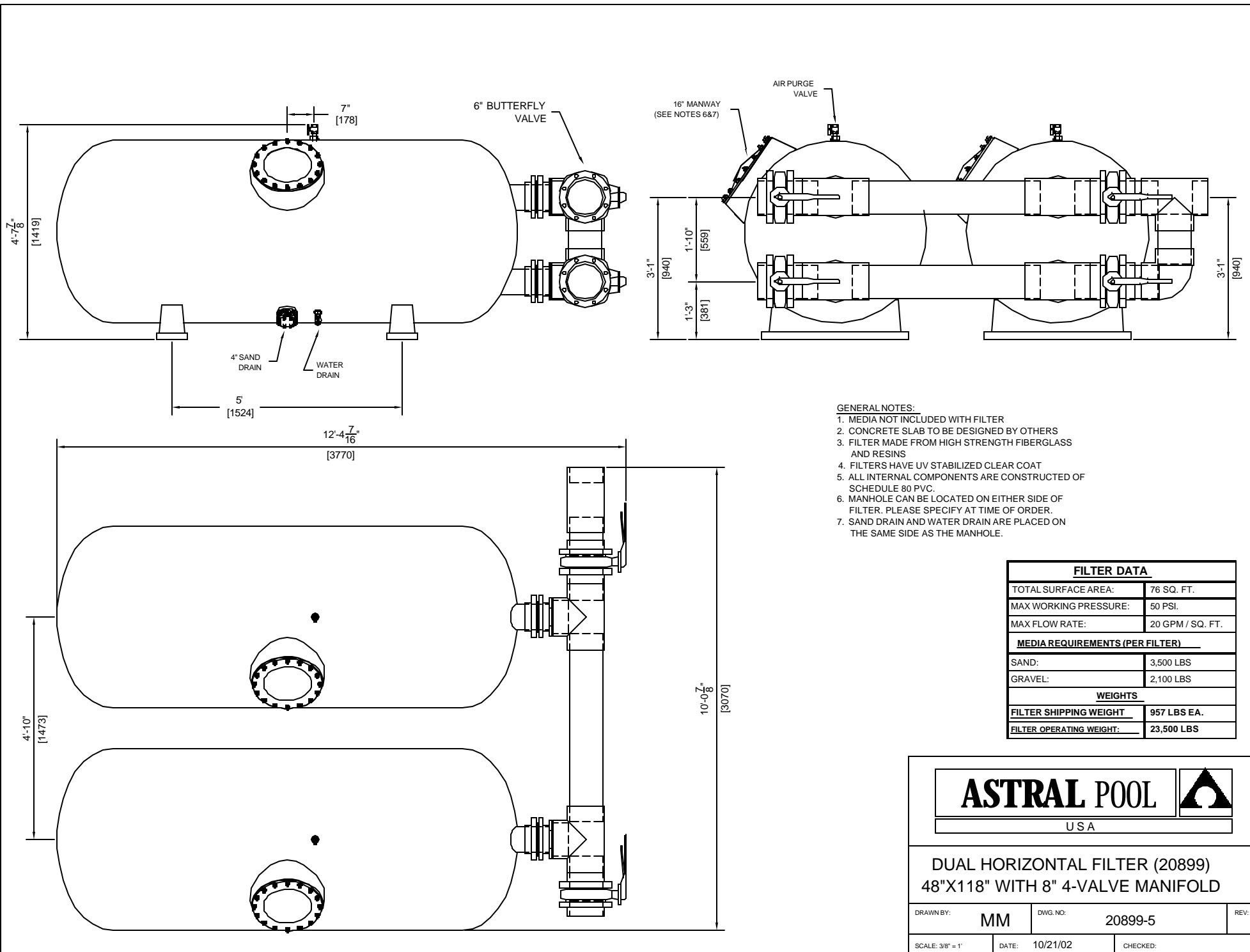


FILTER DATA	
TOTAL SURFACE AREA:	38 SQ. FT.
MAX WORKING PRESSURE:	50 PSI.
MAX FLOW RATE:	20 GPM / SQ. FT.
MEDIA REQUIREMENTS	
SAND:	3,500 LBS
GRAVEL:	2,100 LBS
WEIGHTS	
FILTER SHIPPING WEIGHT	957 LBS
FILTER OPERATING WEIGHT:	11,389 LBS



**HORIZONTAL SAND FILTER (20899)  
48"x118" WITH 6" CONNECTIONS**

DRAWN BY: <b>MM</b>	DWG. NO: <b>20899</b>	REV:
SCALE: 1/2" = 1'	DATE: 10/21/02	CHECKED:



- GENERAL NOTES:**
1. MEDIA NOT INCLUDED WITH FILTER
  2. CONCRETE SLAB TO BE DESIGNED BY OTHERS
  3. FILTER MADE FROM HIGH STRENGTH FIBERGLASS AND RESINS
  4. FILTERS HAVE UV STABILIZED CLEAR COAT
  5. ALL INTERNAL COMPONENTS ARE CONSTRUCTED OF SCHEDULE 80 PVC.
  6. MANHOLE CAN BE LOCATED ON EITHER SIDE OF FILTER. PLEASE SPECIFY AT TIME OF ORDER.
  7. SAND DRAIN AND WATER DRAIN ARE PLACED ON THE SAME SIDE AS THE MANHOLE.

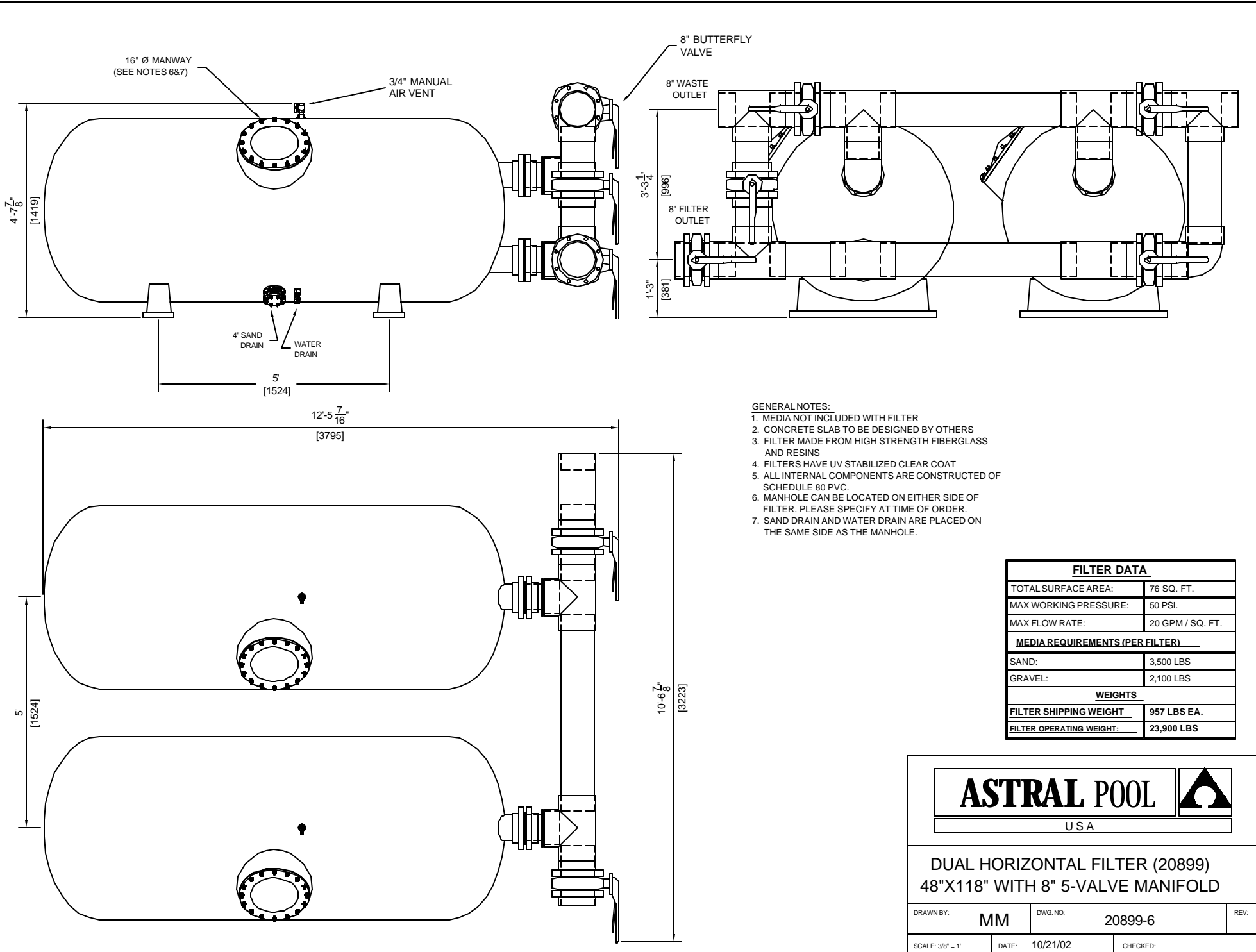
FILTER DATA	
TOTAL SURFACE AREA:	76 SQ. FT.
MAX WORKING PRESSURE:	50 PSI.
MAX FLOW RATE:	20 GPM / SQ. FT.
MEDIA REQUIREMENTS (PER FILTER)	
SAND:	3,500 LBS
GRAVEL:	2,100 LBS
WEIGHTS	
FILTER SHIPPING WEIGHT:	957 LBS EA.
FILTER OPERATING WEIGHT:	23,500 LBS

# ASTRAL POOL

USA

**DUAL HORIZONTAL FILTER (20899)**  
**48"X118" WITH 8" 4-VALVE MANIFOLD**

DRAWN BY:	<b>MM</b>	DWG. NO:	20899-5	REV:
SCALE: 3/8" = 1'	DATE: 10/21/02	CHECKED:		



- GENERAL NOTES:**
1. MEDIA NOT INCLUDED WITH FILTER
  2. CONCRETE SLAB TO BE DESIGNED BY OTHERS
  3. FILTER MADE FROM HIGH STRENGTH FIBERGLASS AND RESINS
  4. FILTERS HAVE UV STABILIZED CLEAR COAT
  5. ALL INTERNAL COMPONENTS ARE CONSTRUCTED OF SCHEDULE 80 PVC.
  6. MANHOLE CAN BE LOCATED ON EITHER SIDE OF FILTER. PLEASE SPECIFY AT TIME OF ORDER.
  7. SAND DRAIN AND WATER DRAIN ARE PLACED ON THE SAME SIDE AS THE MANHOLE.

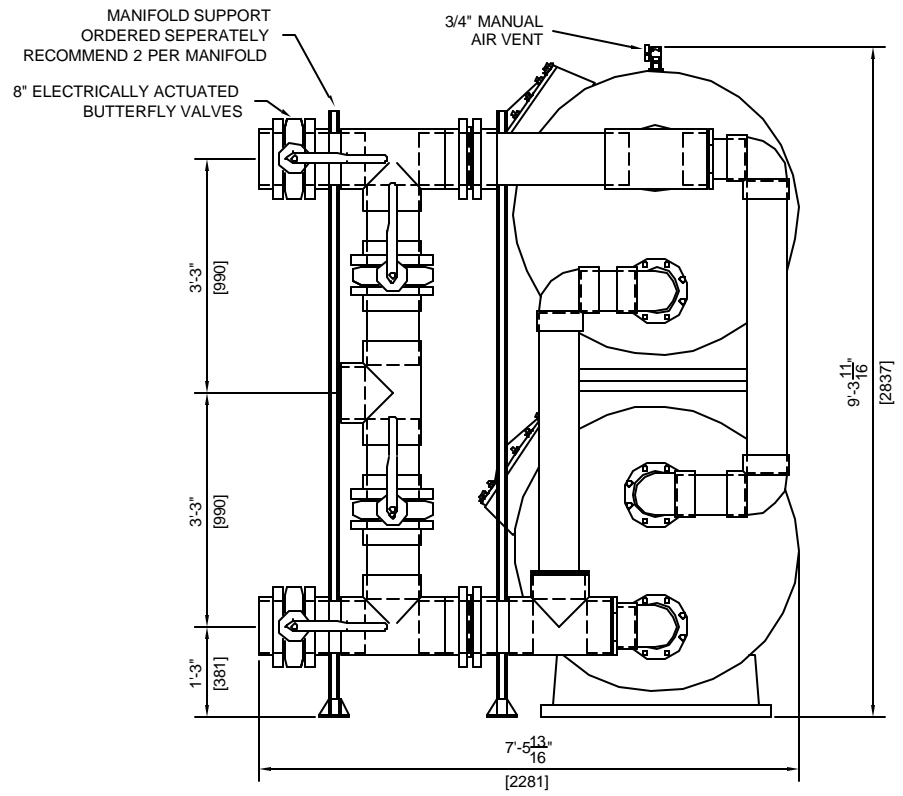
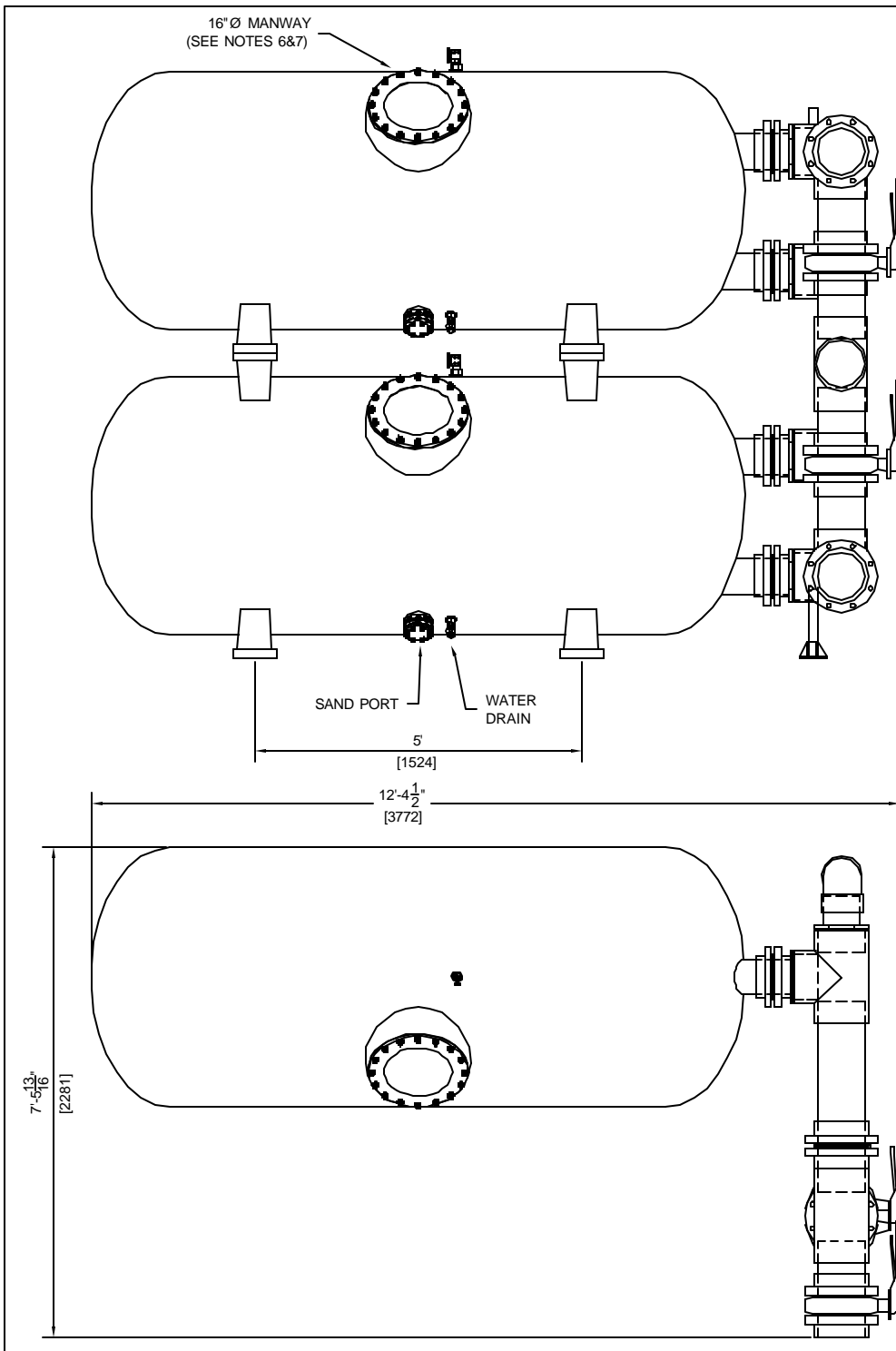
FILTER DATA	
TOTAL SURFACE AREA:	76 SQ. FT.
MAX WORKING PRESSURE:	50 PSI.
MAX FLOW RATE:	20 GPM / SQ. FT.
MEDIA REQUIREMENTS (PER FILTER)	
SAND:	3,500 LBS
GRAVEL:	2,100 LBS
WEIGHTS	
FILTER SHIPPING WEIGHT	957 LBS EA.
FILTER OPERATING WEIGHT:	23,900 LBS

ASTRAL POOL

USA

**DUAL HORIZONTAL FILTER (20899)**  
**48"X118" WITH 8" 5-VALVE MANIFOLD**

DRAWN BY:	<b>MM</b>	DWG. NO:	20899-6	REV:
SCALE: 3/8" = 1'	DATE: 10/21/02	CHECKED:		



**GENERAL NOTES:**

1. MEDIA NOT INCLUDED WITH FILTER
2. CONCRETE SLAB TO BE DESIGNED BY OTHERS
3. FILTER MADE FROM HIGH STRENGTH FIBERGLASS AND RESINS
4. FILTERS HAVE UV STABILIZED CLEAR COAT
5. ALL INTERNAL COMPONENTS ARE CONSTRUCTED OF SCHEDULE 80 PVC.
6. MANHOLE CAN BE LOCATED ON EITHER SIDE OF FILTER. PLEASE SPECIFY AT TIME OF ORDER.
7. SAND DRAIN AND WATER DRAIN ARE PLACED ON THE SAME SIDE AS THE MANHOLE.

**FILTER DATA**

TOTAL SURFACE AREA:	76 SQ. FT.
MAX WORKING PRESSURE:	50 PSI.
MAX FLOW RATE:	20 GPM / SQ. FT.
<b>MEDIA REQUIREMENTS</b>	
SAND:	3,500 LBS
GRAVEL:	2,100 LBS
<b>WEIGHTS</b>	
FILTER SHIPPING WEIGHT:	957 LBS EA.
FILTER OPERATING WEIGHT:	24,500 LBS

**ASTRAL POOL**



USA

DUAL HORIZONTAL FILTER (20899)  
48"X118" WITH 8" 4 VALVE MANIFOLD

DRAWN BY:	MM	DWG. NO:	20899-4	REV:
SCALE: 3/8" = 1'	DATE:	10/21/02	CHECKED:	