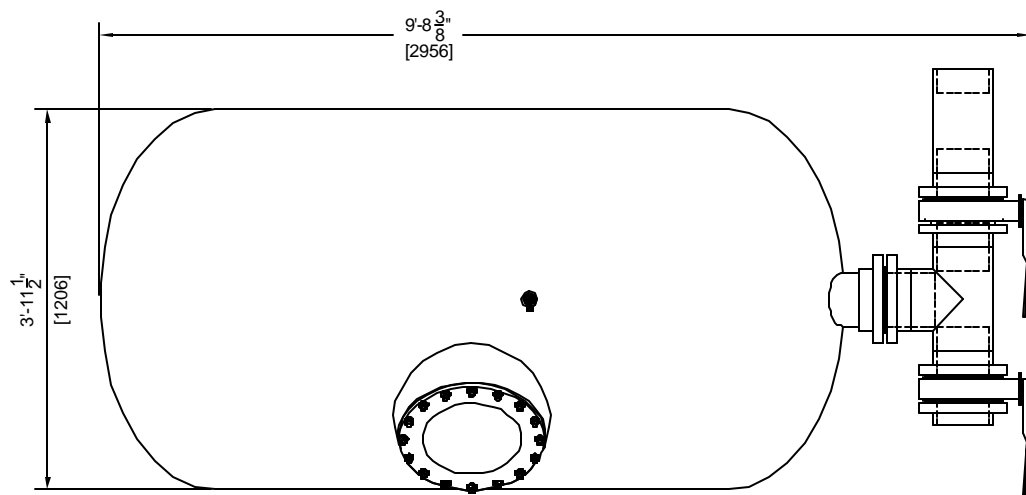


**GENERAL NOTES:**

1. MEDIA NOT INCLUDED WITH FILTER
2. CONCRETE SLAB TO BE DESIGNED BY OTHERS
3. FILTER MADE FROM HIGH STRENGTH FIBERGLASS AND RESINS
4. FILTERS HAVE UV STABILIZED CLEAR COAT
5. ALL INTERNAL COMPONENTS ARE CONSTRUCTED OF SCHEDULE 80 PVC.
6. MANHOLE CAN BE LOCATED ON EITHER SIDE OF FILTER. PLEASE SPECIFY AT TIME OF ORDER.
7. SAND DRAIN AND WATER DRAIN ARE PLACED ON THE SAME SIDE AS THE MANHOLE.



**FILTER DATA**

TOTAL SURFACE AREA:	29 SQ. FT.
MAX WORKING PRESSURE:	50 PSI.
MAX FLOW RATE:	20 GPM / SQ. FT.

**MEDIA REQUIREMENTS**

SAND:	2,700 LBS
GRAVEL:	1,600 LBS

**WEIGHTS**

FILTER SHIPPING WEIGHT	726 LBS
FILTER OPERATING WEIGHT:	8,895 LBS

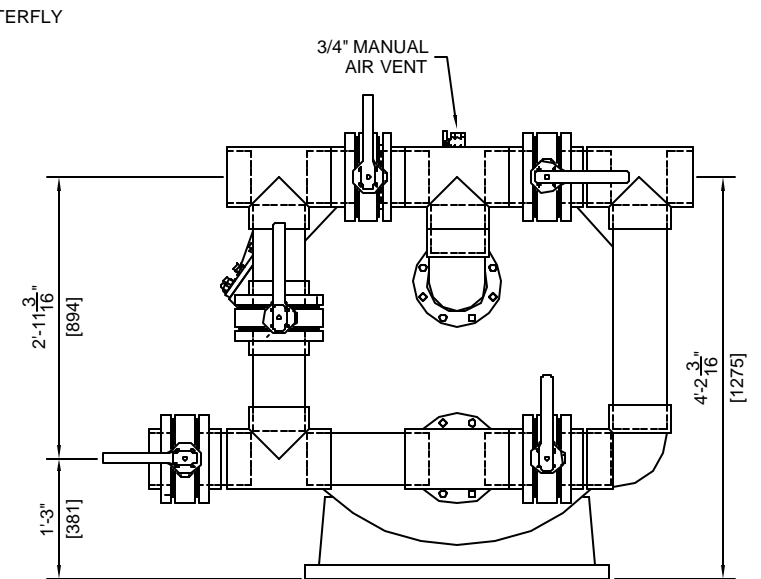
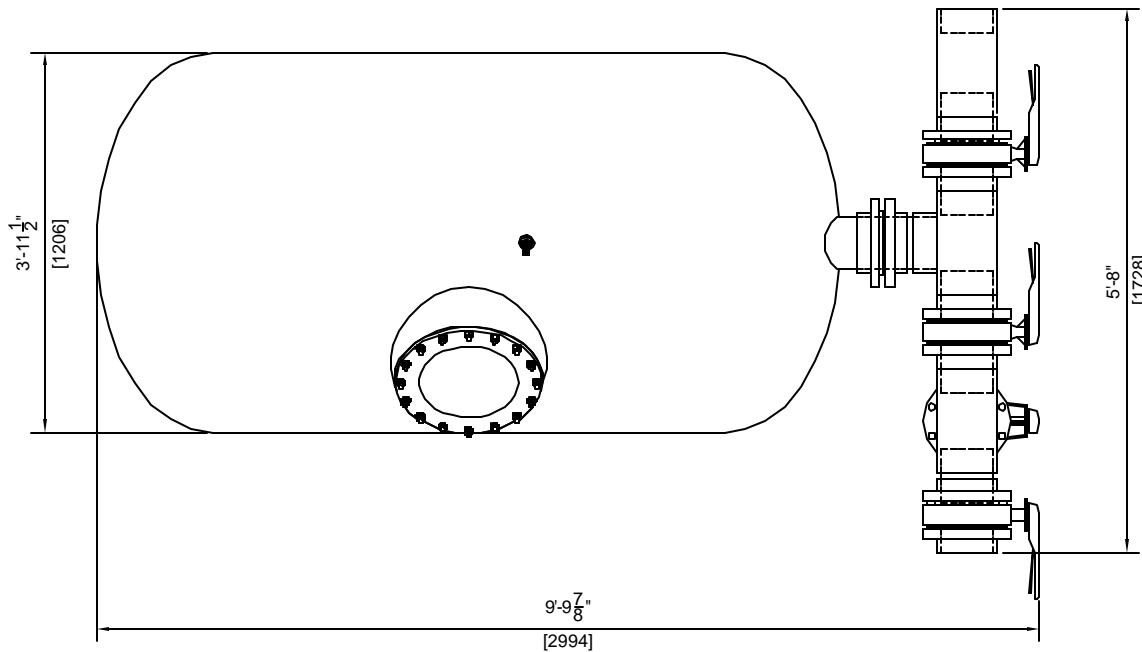
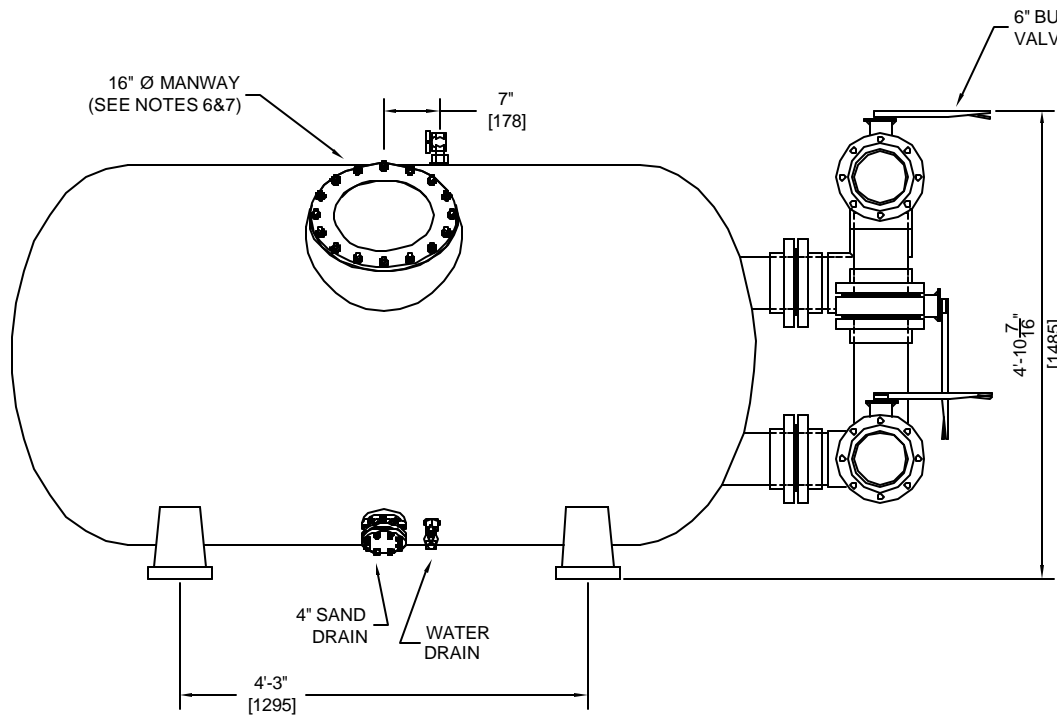
**ASTRAL POOL**



USA

**HORIZONTAL SAND FILTER (20897)**  
**48"x91" WITH 6" 4 VALVE MANIFOLD**

DRAWN BY:	MM	DWG. NO:	20897-2	REV:
SCALE: 1/2" = 1'	DATE:	10/1/02	CHECKED:	



#### GENERAL NOTES:

1. MEDIA NOT INCLUDED WITH FILTER
2. CONCRETE SLAB TO BE DESIGNED BY OTHERS
3. FILTER MADE FROM HIGH STRENGTH FIBERGLASS AND RESINS
4. FILTERS HAVE UV STABILIZED CLEAR COAT
5. ALL INTERNAL COMPONENTS ARE CONSTRUCTED OF SCHEDULE 80 PVC.
6. MANHOLE CAN BE LOCATED ON EITHER SIDE OF FILTER. PLEASE SPECIFY AT TIME OF ORDER.
7. SAND DRAIN AND WATER DRAIN ARE PLACED ON THE SAME SIDE AS THE MANHOLE.

#### FILTER DATA

TOTAL SURFACE AREA:	29 SQ. FT.
MAX WORKING PRESSURE:	50 PSI.
MAX FLOW RATE:	20 GPM / SQ. FT.

#### MEDIA REQUIREMENTS

SAND:	2,700 LBS
GRAVEL:	1,600 LBS

#### WEIGHTS

FILTER SHIPPING WEIGHT	726 LBS
FILTER OPERATING WEIGHT:	8,895 LBS

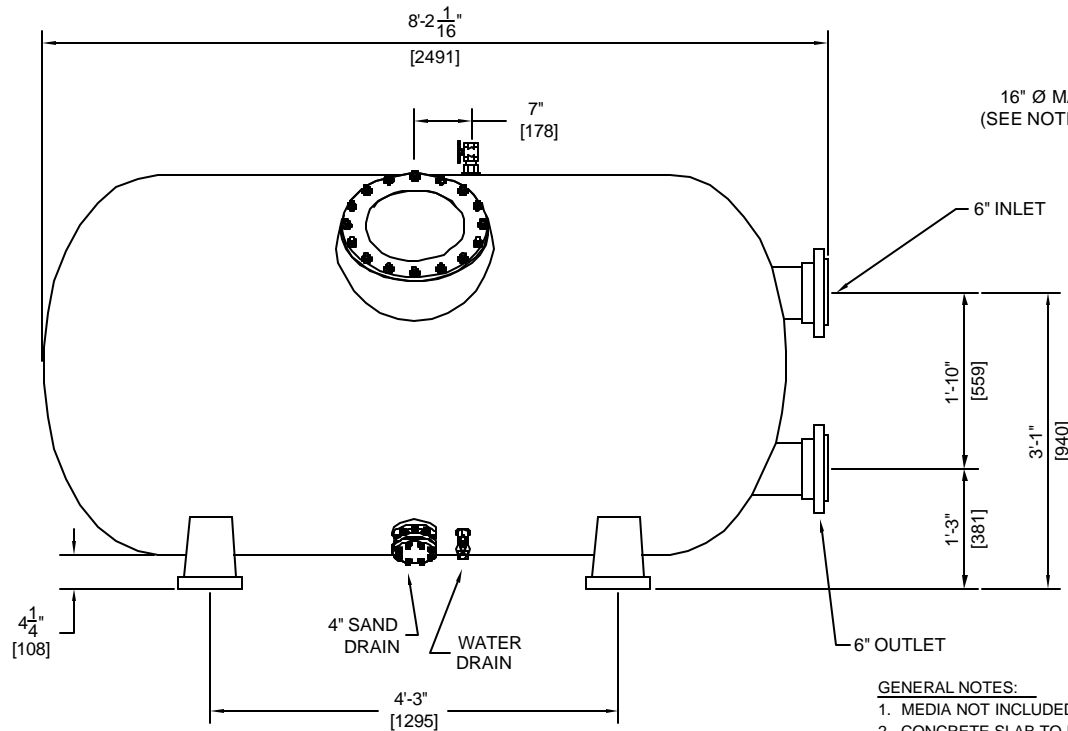
**ASTRAL POOL**



USA

HORIZONTAL SAND FILTER (20897)  
48"x91" WITH 6" 5 VALVE MANIFOLD

DRAWN BY: MM	DWG. NO: 20896-3	REV:
SCALE: 1/2" = 1'	DATE: 10/1/02	CHECKED:



16" Ø MANWAY  
(SEE NOTES 6&7)

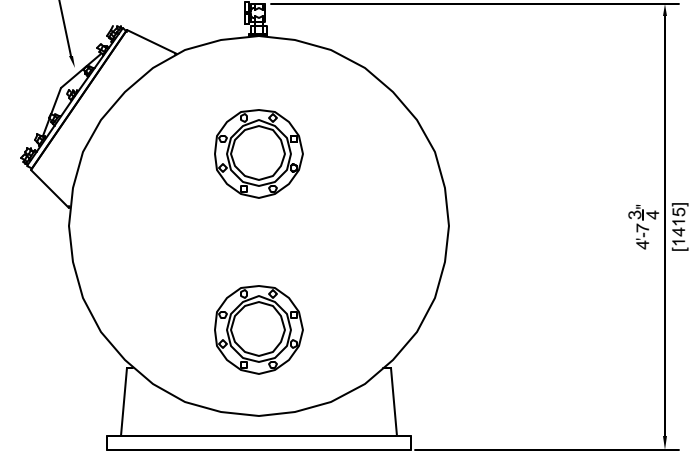
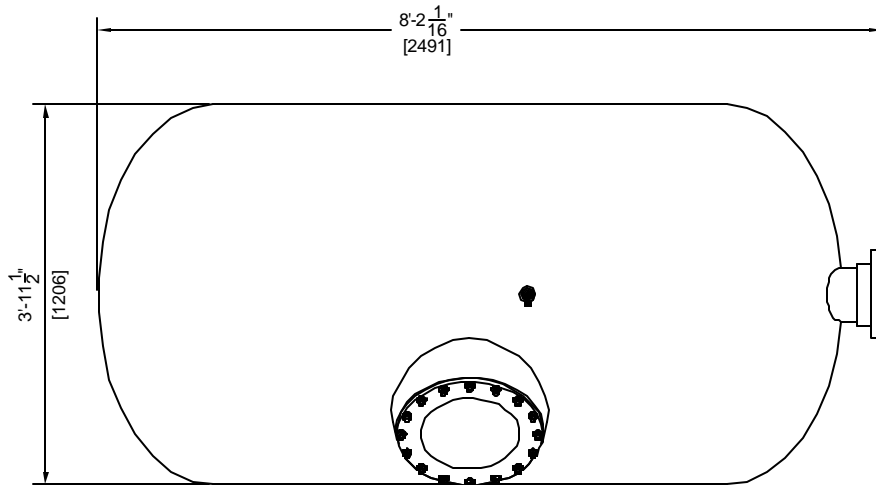
6" INLET

3/4" MANUAL  
AIR VENT

6" OUTLET

**GENERAL NOTES:**

1. MEDIA NOT INCLUDED WITH FILTER
2. CONCRETE SLAB TO BE DESIGNED BY OTHERS
3. FILTER MADE FROM HIGH STRENGTH FIBERGLASS AND RESINS
4. FILTERS HAVE UV STABILIZED CLEAR COAT
5. ALL INTERNAL COMPONENTS ARE CONSTRUCTED OF SCHEDULE 80 PVC.
6. MANHOLE CAN BE LOCATED ON EITHER SIDE OF FILTER. PLEASE SPECIFY AT TIME OF ORDER.
7. SAND DRAIN AND WATER DRAIN ARE PLACED ON THE SAME SIDE AS THE MANHOLE.



**FILTER DATA**

TOTAL SURFACE AREA:	29 SQ. FT.
MAX WORKING PRESSURE:	50 PSI.
MAX FLOW RATE:	20 GPM / SQ. FT.

**MEDIA REQUIREMENTS**

SAND:	2,700 LBS
GRAVEL:	1,600 LBS

**WEIGHTS**

FILTER SHIPPING WEIGHT	726 LBS
FILTER OPERATING WEIGHT:	8,685 LBS

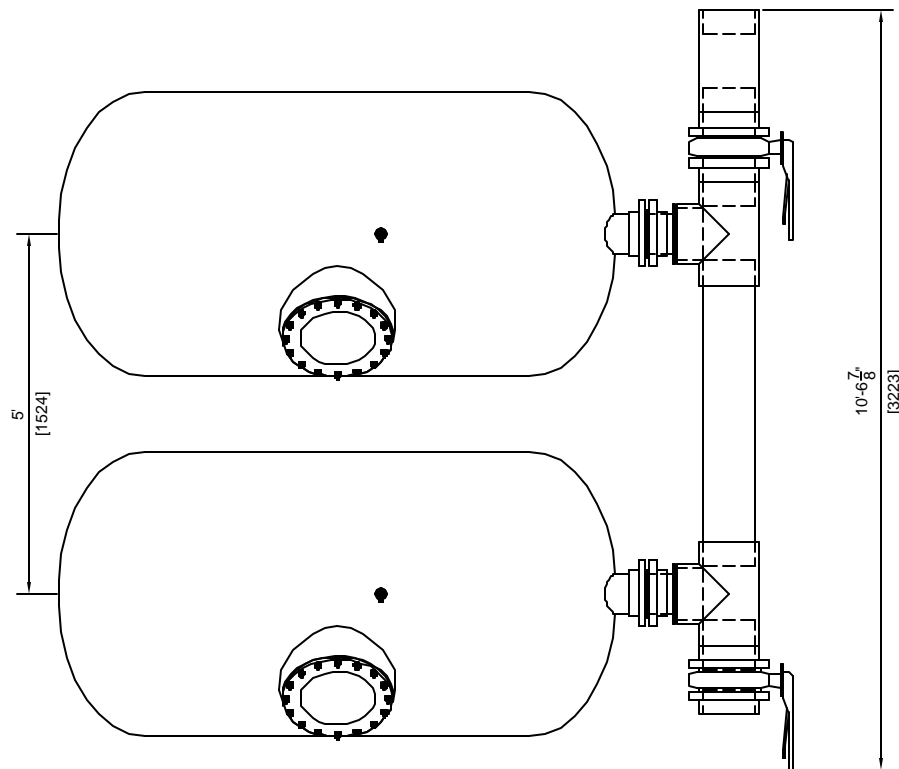
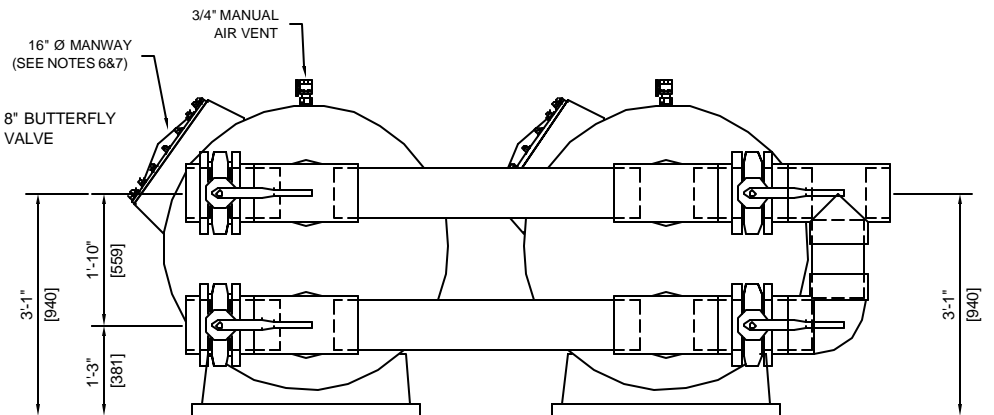
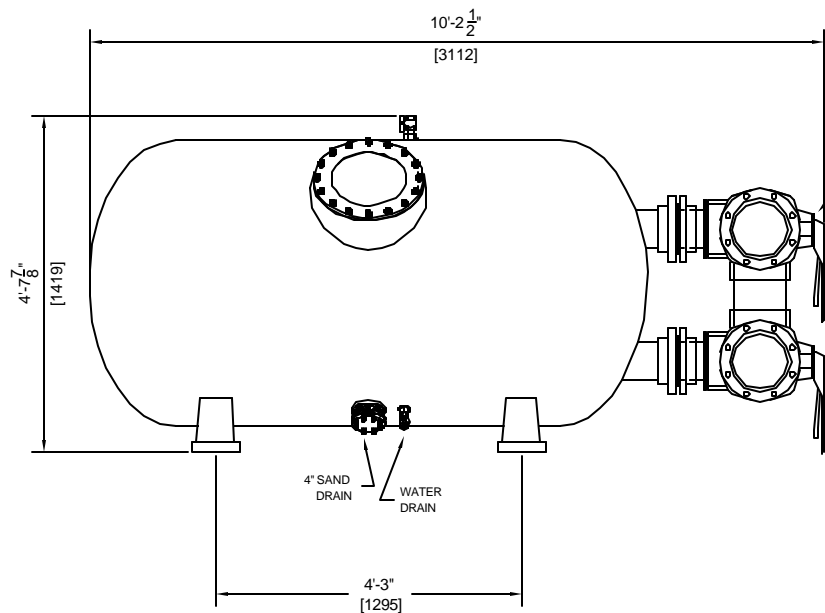
**ASTRAL POOL**



USA

**HORIZONTAL SAND FILTER (20897)**  
**48"x91" WITH 6" CONNECTIONS**

DRAWN BY:	MM	DWG. NO:	20897	REV:	
SCALE: 1/2" = 1'		DATE:	10/1/02	CHECKED:	



#### GENERAL NOTES:

1. MEDIA NOT INCLUDED WITH FILTER
2. CONCRETE SLAB TO BE DESIGNED BY OTHERS
3. FILTER MADE FROM HIGH STRENGTH FIBERGLASS AND RESINS
4. FILTERS HAVE UV STABILIZED CLEAR COAT
5. ALL INTERNAL COMPONENTS ARE CONSTRUCTED OF SCHEDULE 80 PVC.
6. MANHOLE CAN BE LOCATED ON EITHER SIDE OF FILTER. PLEASE SPECIFY AT TIME OF ORDER.
7. SAND DRAIN AND WATER DRAIN ARE PLACED ON THE SAME SIDE AS THE MANHOLE.

#### FILTER DATA

TOTAL SURFACE AREA:	58 SQ. FT.
MAX WORKING PRESSURE:	50 PSI.
MAX FLOW RATE:	20 GPM / SQ. FT.

#### MEDIA REQUIREMENTS

SAND:	2,700 LBS EA.
GRAVEL:	1,600 LBS EA.

#### WEIGHTS

FILTER SHIPPING WEIGHT:	726 LBS EA.
SYSTEM OPERATING WEIGHT:	18,450 LBS

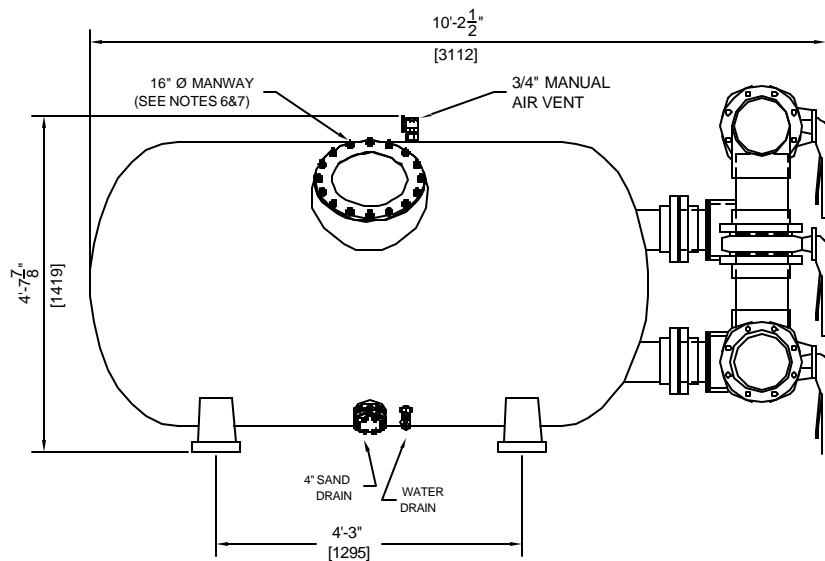
**ASTRAL POOL**



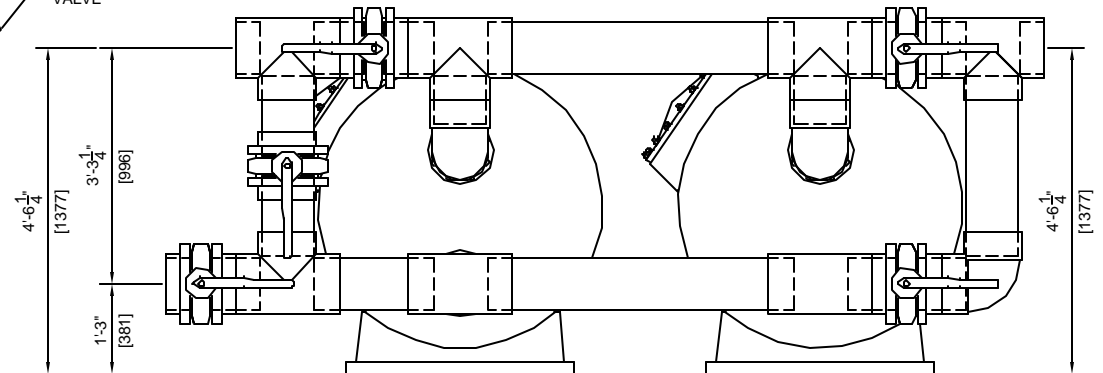
USA

DUAL HORIZONTAL SAND FILTER (20897)  
48"X91" WITH 8" 4 VALVE MANIFOLD

DRAWN BY:	MM	DWG. NO:	20897-5	REV:	
SCALE: 3/8" = 1'		DATE:	10/14/02	CHECKED:	

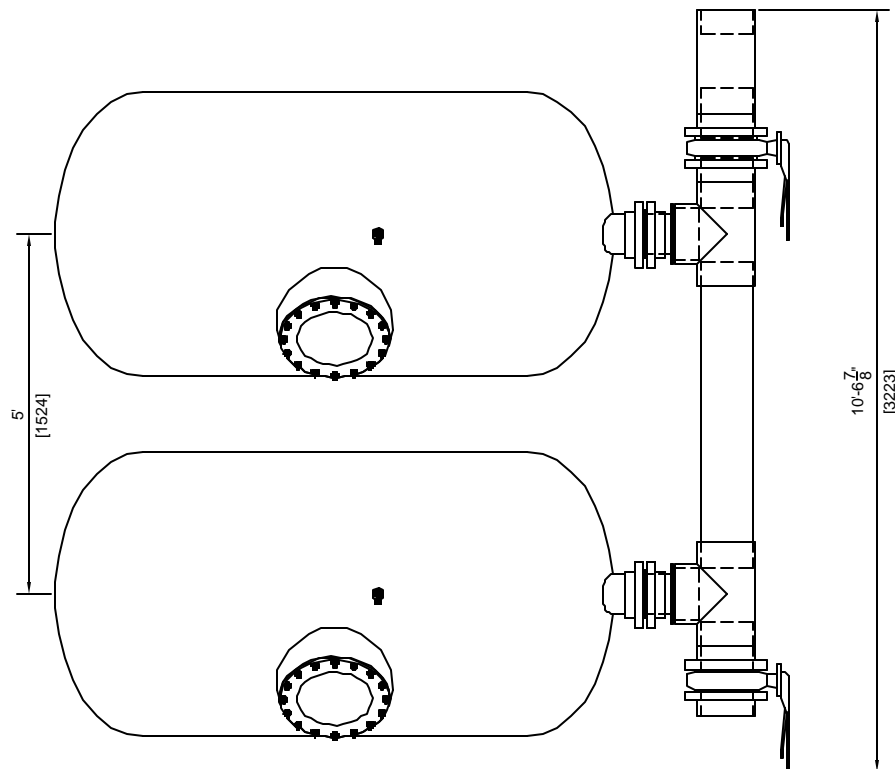


8" BUTTERFLY VALVE



#### GENERAL NOTES:

1. MEDIA NOT INCLUDED WITH FILTER
2. CONCRETE SLAB TO BE DESIGNED BY OTHERS
3. FILTER MADE FROM HIGH STRENGTH FIBERGLASS AND RESINS
4. FILTERS HAVE UV STABILIZED CLEAR COAT
5. ALL INTERNAL COMPONENTS ARE CONSTRUCTED OF SCHEDULE 80 PVC.
6. MANHOLE CAN BE LOCATED ON EITHER SIDE OF FILTER. PLEASE SPECIFY AT TIME OF ORDER.
7. SAND DRAIN AND WATER DRAIN ARE PLACED ON THE SAME SIDE AS THE MANHOLE.



#### FILTER DATA

TOTAL SURFACE AREA:	58 SQ. FT.
MAX WORKING PRESSURE:	50 PSI.
MAX FLOW RATE:	20 GPM / SQ. FT.

#### MEDIA REQUIREMENTS

SAND:	2,700 LBS EA.
GRAVEL:	1,600 LBS EA.

#### WEIGHTS

FILTER SHIPPING WEIGHT	726 LBS EA.
FILTER OPERATING WEIGHT:	18,750 LBS

**ASTRAL POOL**



USA

DUAL HORIZONTAL SAND FILTER (20897)  
48"X91" WITH 8" 5 VALVE MANIFOLD

DRAWN BY:	MM	DWG. NO:	20897-6	REV:	
SCALE: 3/8" = 1'		DATE:	10/14/02	CHECKED:	

16" Ø MANWAY  
(SEE NOTES 6&7)

MANIFOLD SUPPORT  
ORDERED SEPARATELY  
RECOMMEND 2 PER MANIFOLD

3/4" MANUAL  
AIR VENT

8" BUTTERFLY  
VALVE

SAND PORT

WATER  
DRAIN

AUTOMATIC  
CONTROL PANEL

GENERAL NOTES:

1. MEDIA NOT INCLUDED WITH FILTER
2. CONCRETE SLAB TO BE DESIGNED BY OTHERS
3. FILTER MADE FROM HIGH STRENGTH FIBERGLASS AND RESINS
4. FILTERS HAVE UV STABILIZED CLEAR COAT
5. ALL INTERNAL COMPONENTS ARE CONSTRUCTED OF SCHEDULE 80 PVC.
6. MANHOLE CAN BE LOCATED ON EITHER SIDE OF FILTER. PLEASE SPECIFY AT TIME OF ORDER.
7. SAND DRAIN AND WATER DRAIN ARE PLACED ON THE SAME SIDE AS THE MANHOLE.

FILTER DATA

TOTAL SURFACE AREA:	58 SQ. FT.
MAX WORKING PRESSURE:	50 PSI.
MAX FLOW RATE:	20 GPM / SQ. FT.

MEDIA REQUIREMENTS

SAND:	2,700 LBS EA.
GRAVEL:	1,600 LBS EA.

WEIGHTS

<u>FILTER SHIPPING WEIGHT</u>	726 LBS EA.
<u>FILTER OPERATING WEIGHT:</u>	19,550 LBS

**ASTRAL POOL**



USA

HORIZONTAL SAND FILTER (20897)  
48"X91"W/ 8" 4 VALVE AUTO MANIF. STACKED

DRAWN BY:	MM	DWG. NO:	20897-4 AUTO	REV:
SCALE: 3/8" = 1'	DATE: 10/14/02	CHECKED:		