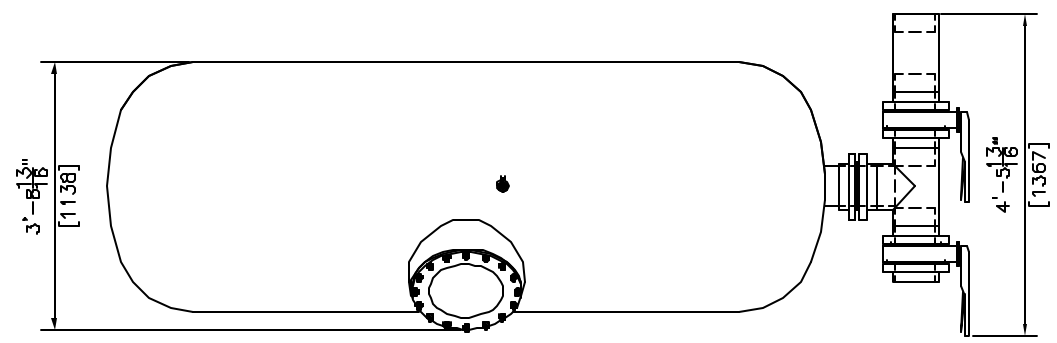



- GENERAL NOTES:**
1. MEDIA NOT INCLUDED WITH FILTER
 2. CONCRETE SLAB TO BE DESIGNED BY OTHERS
 3. FILTER MADE FROM HIGH STRENGTH FIBERGLASS AND RESINS
 4. FILTERS HAVE UV STABILIZED CLEAR COAT
 5. ALL INTERNAL COMPONENTS ARE CONSTRUCTED OF SCHEDULE 80 PVC.
 6. MANHOLE CAN BE LOCATED ON EITHER SIDE OF FILTER. PLEASE SPECIFY AT TIME OF ORDER.
 7. SAND DRAIN AND WATER DRAIN ARE PLACED ON THE SAME SIDE AS THE MANHOLE.



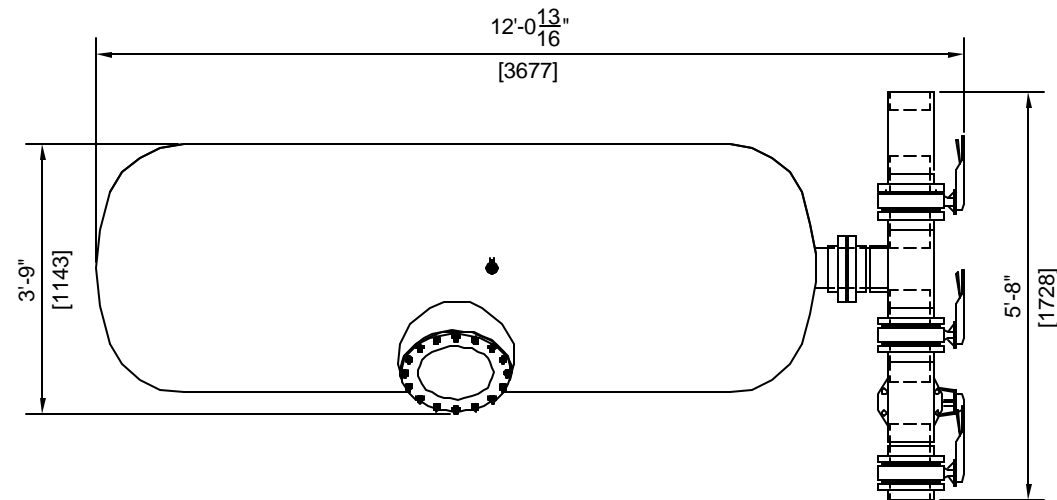
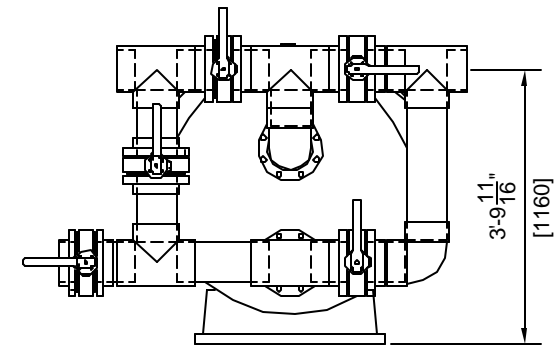
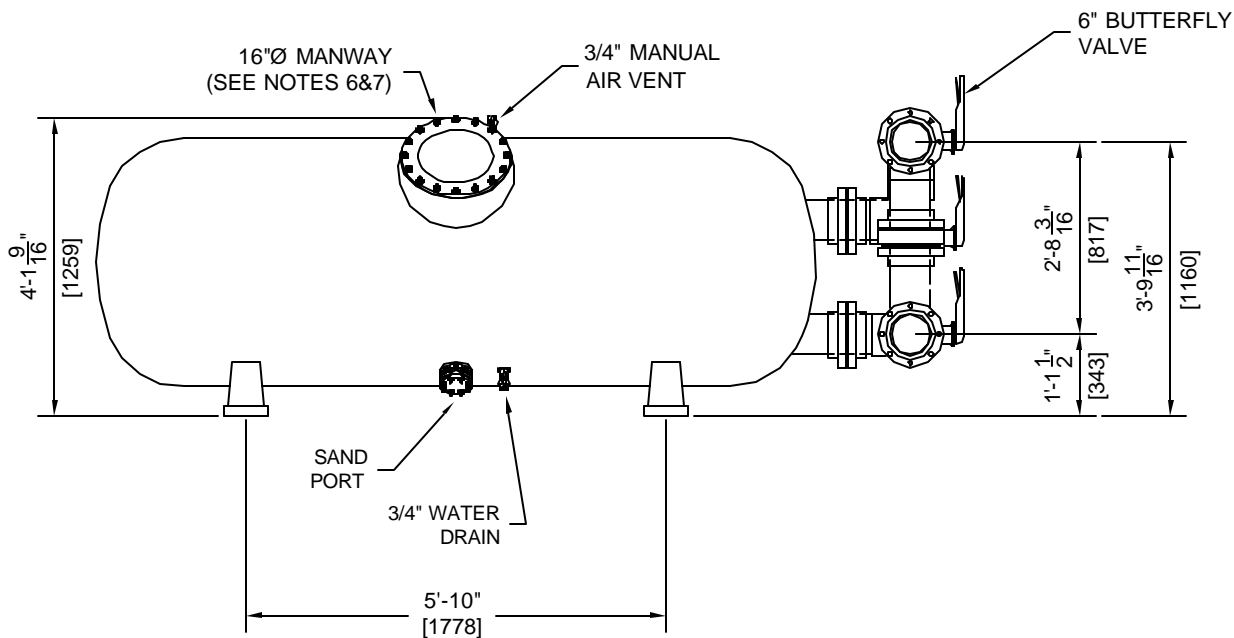
FILTER DATA	
TOTAL SURFACE AREA:	34 SQ. FT.
MAX WORKING PRESSURE:	50 PSI.
MAX FLOW RATE:	20 GPM / SQ. FT.
MEDIA REQUIREMENTS	
SAND:	3,800 LBS
GRAVEL:	0 LBS
WEIGHTS	
FILTER SHIPPING WEIGHT:	815 LBS
FILTER OPERATING WEIGHT:	7,950 LBS



ASTRAL POOL
U S A

HORIZONTAL SAND FILTER (20895)
42X118 W/6" 4V MANIFOLD

DRAWN BY: MM	DWG NO. 20895-2	REV
SCALE: 3/8" = 1'	DATE: 9/30/02	SHEET 1 OF 1



GENERAL NOTES:

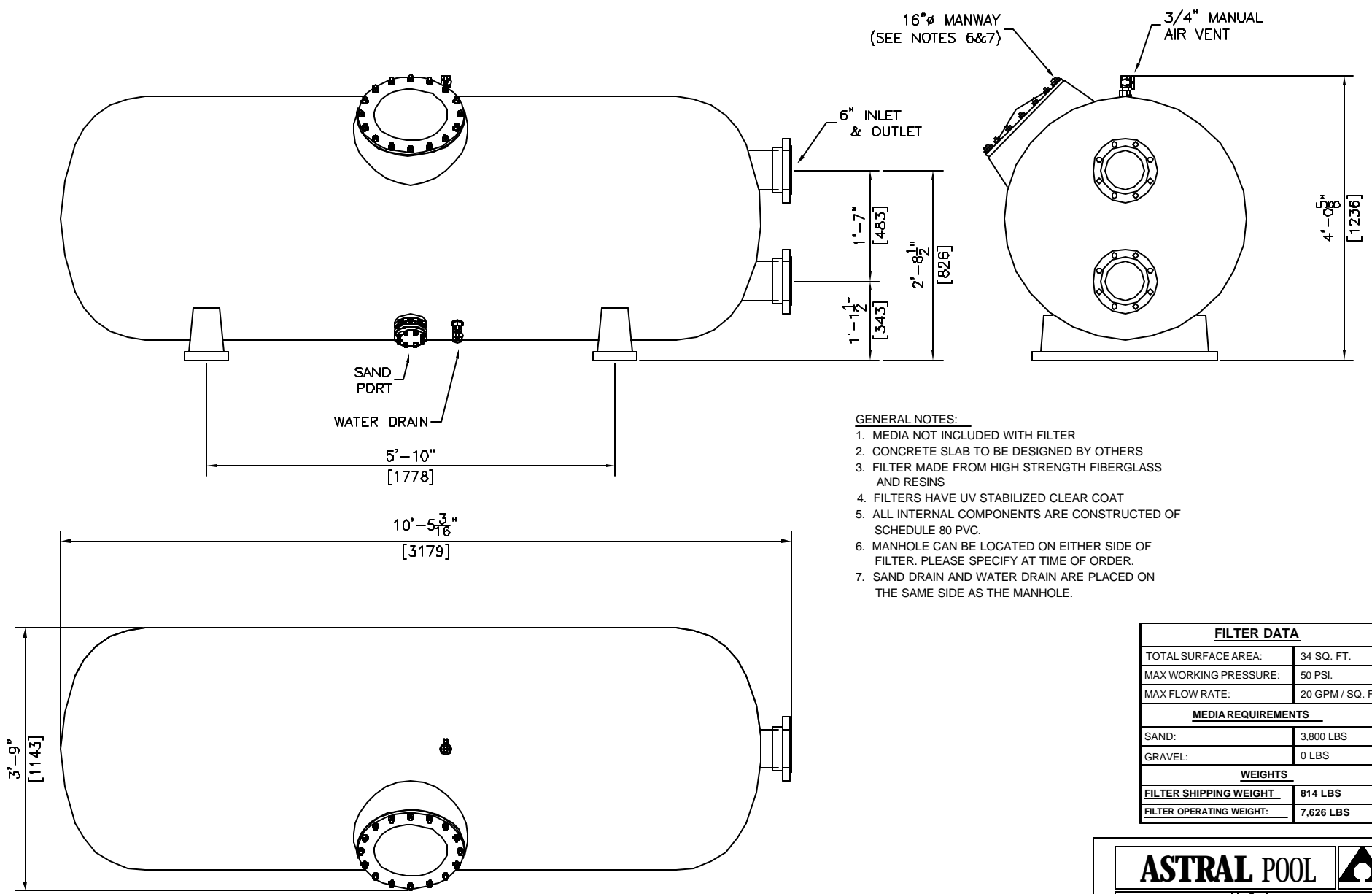
1. MEDIA NOT INCLUDED WITH FILTER
2. CONCRETE SLAB TO BE DESIGNED BY OTHERS
3. FILTER MADE FROM HIGH STRENGTH FIBERGLASS AND RESINS
4. FILTERS HAVE UV STABILIZED CLEAR COAT
5. ALL INTERNAL COMPONENTS ARE CONSTRUCTED OF SCHEDULE 80 PVC.
6. MANHOLE CAN BE LOCATED ON EITHER SIDE OF FILTER. PLEASE SPECIFY AT TIME OF ORDER.
7. SAND DRAIN AND WATER DRAIN ARE PLACED ON THE SAME SIDE AS THE MANHOLE.

FILTER DATA	
TOTAL SURFACE AREA:	34 SQ. FT.
MAX WORKING PRESSURE:	50 PSI.
MAX FLOW RATE:	20 GPM / SQ. FT.
MEDIA REQUIREMENTS	
SAND:	3,800 LBS
GRAVEL:	0 LBS
WEIGHTS	
FILTER SHIPPING WEIGHT	815 LBS
FILTER OPERATING WEIGHT:	7,950 LBS



HORIZONTAL SAND FILTER (20895)
42X118 W/6" 5 VALVE MANIFOLD

MM	DWG NO.	20895A-3	REV
	9/30/02	SHEET 1	OF 1



- GENERAL NOTES:**
1. MEDIA NOT INCLUDED WITH FILTER
 2. CONCRETE SLAB TO BE DESIGNED BY OTHERS
 3. FILTER MADE FROM HIGH STRENGTH FIBERGLASS AND RESINS
 4. FILTERS HAVE UV STABILIZED CLEAR COAT
 5. ALL INTERNAL COMPONENTS ARE CONSTRUCTED OF SCHEDULE 80 PVC.
 6. MANHOLE CAN BE LOCATED ON EITHER SIDE OF FILTER. PLEASE SPECIFY AT TIME OF ORDER.
 7. SAND DRAIN AND WATER DRAIN ARE PLACED ON THE SAME SIDE AS THE MANHOLE.

FILTER DATA	
TOTAL SURFACE AREA:	34 SQ. FT.
MAX WORKING PRESSURE:	50 PSI.
MAX FLOW RATE:	20 GPM / SQ. FT.
MEDIA REQUIREMENTS	
SAND:	3,800 LBS
GRAVEL:	0 LBS
WEIGHTS	
FILTER SHIPPING WEIGHT:	814 LBS
FILTER OPERATING WEIGHT:	7,626 LBS

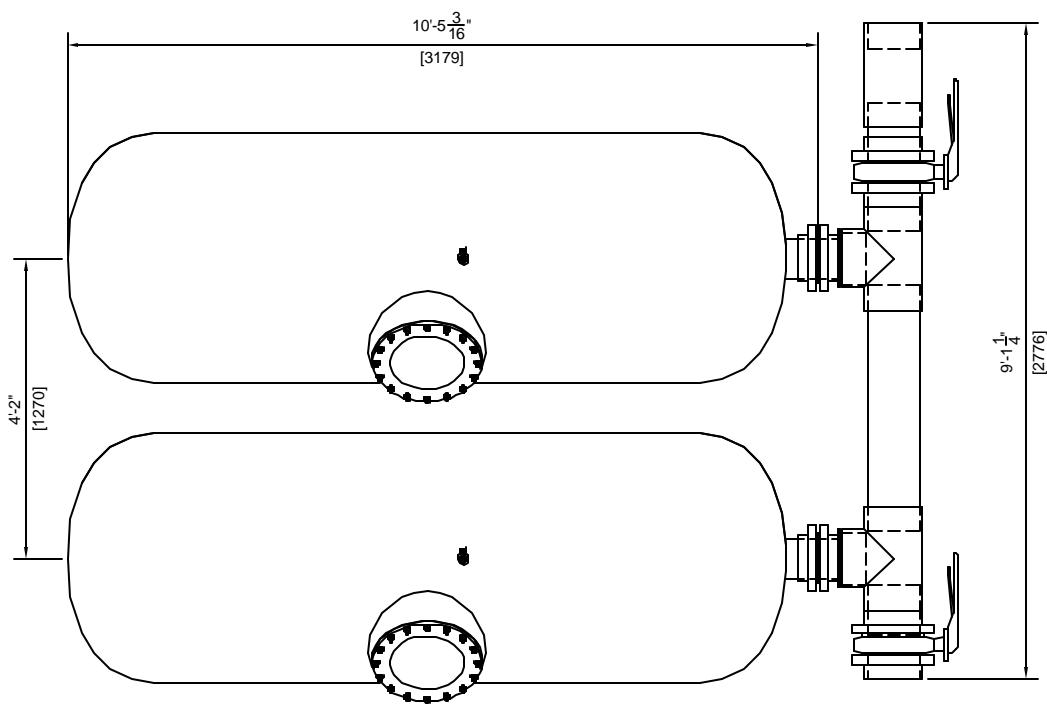
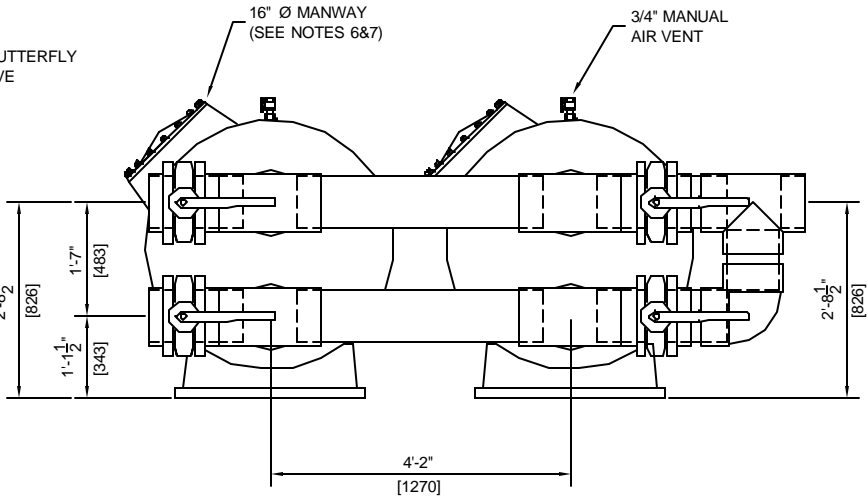
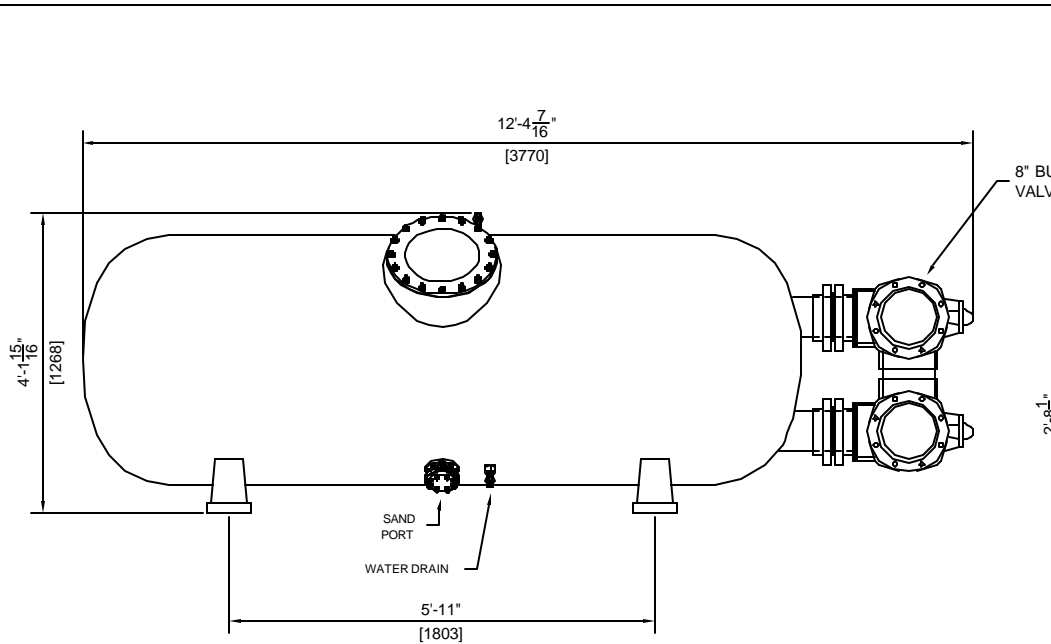
ASTRAL POOL

U S A

HORIZONTAL SAND FILTER (20895)
42"X118" WITH 6" CONNECTIONS

DRAWN BY: MM	DWG NO: 20895	REV
--------------	---------------	-----

SCALE 1/2" = 1" DATE: 08/19/02 SHEET 1 OF 1



GENERAL NOTES:

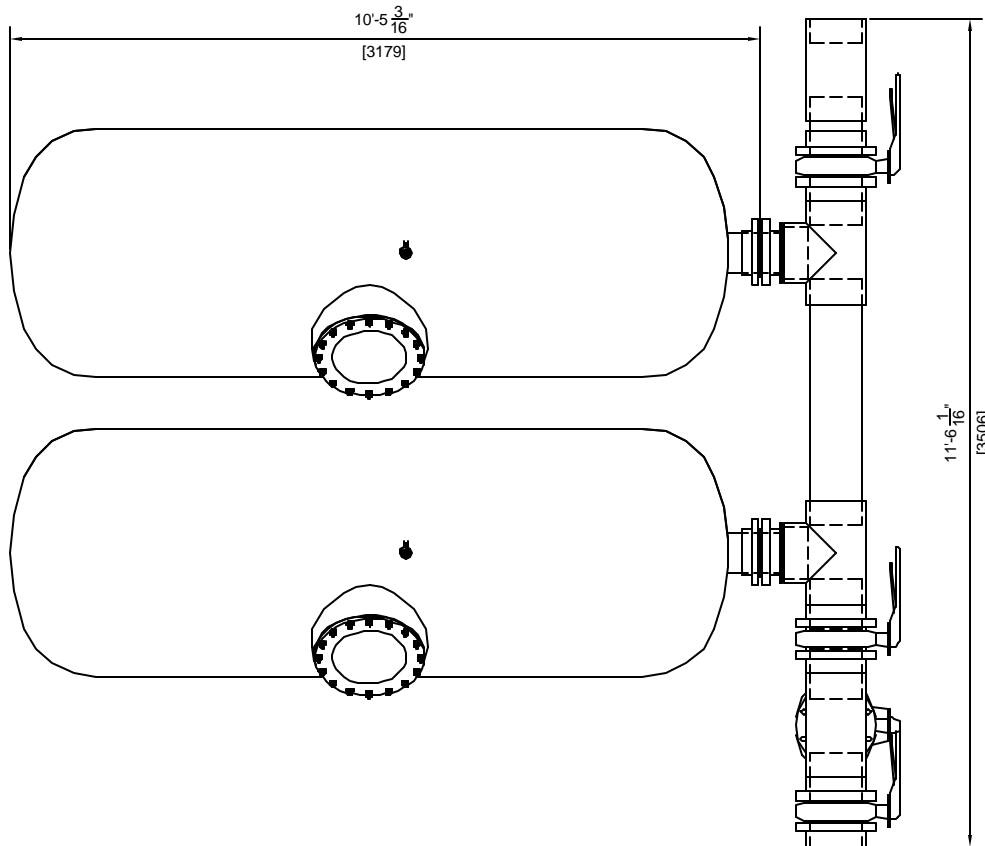
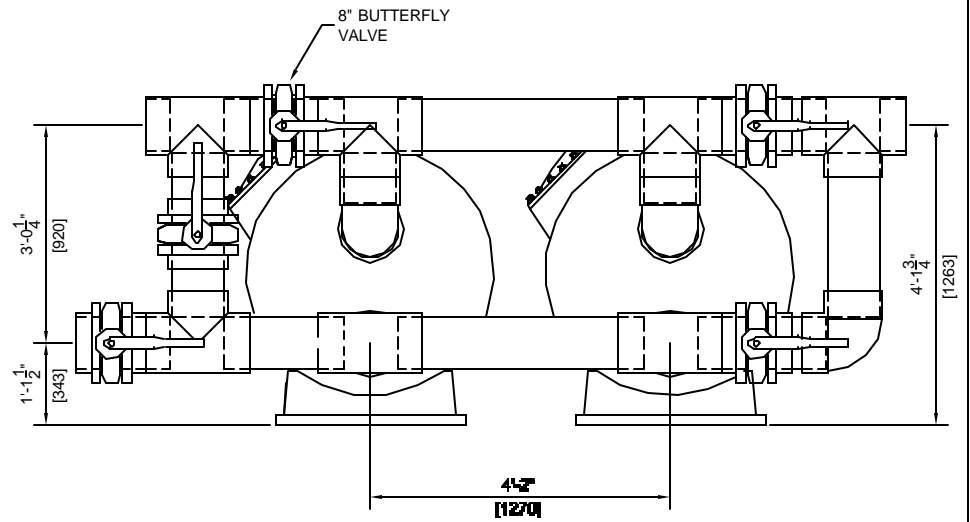
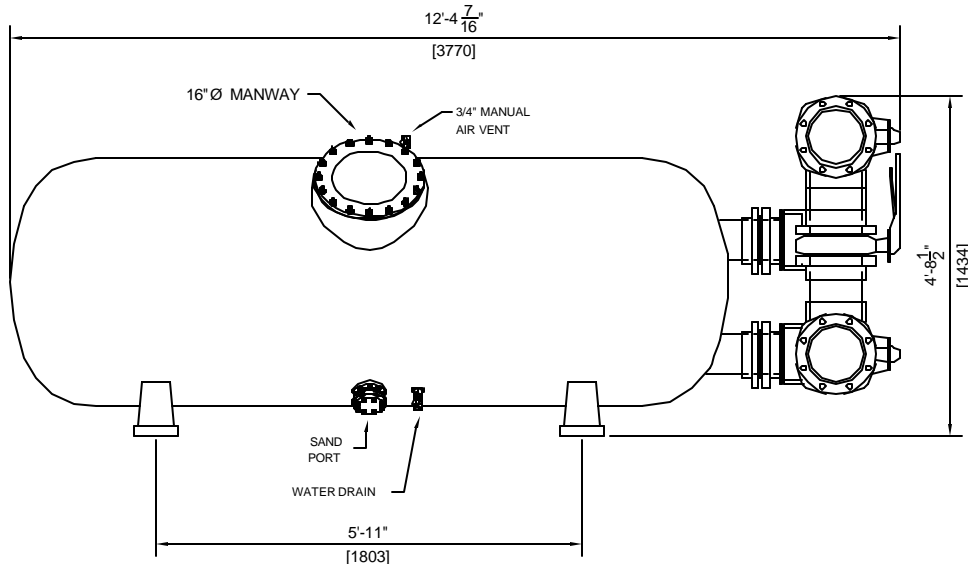
1. MEDIA NOT INCLUDED WITH FILTER
2. CONCRETE SLAB TO BE DESIGNED BY OTHERS
3. FILTER MADE FROM HIGH STRENGTH FIBERGLASS AND RESINS
4. FILTERS HAVE UV STABILIZED CLEAR COAT
5. ALL INTERNAL COMPONENTS ARE CONSTRUCTED OF SCHEDULE 80 PVC.
6. MANHOLE CAN BE LOCATED ON EITHER SIDE OF FILTER. PLEASE SPECIFY AT TIME OF ORDER.
7. SAND DRAIN AND WATER DRAIN ARE PLACED ON THE SAME SIDE AS THE MANHOLE.

FILTER DATA	
TOTAL SURFACE AREA:	68 SQ. FT.
MAX WORKING PRESSURE:	50 PSI.
MAX FLOW RATE:	20 GPM / SQ. FT.
MEDIA REQUIREMENTS	
SAND:	3,800 LBS
GRAVEL:	0 LBS
WEIGHTS	
FILTER SHIPPING WEIGHT	814 LBS EA.
FILTER OPERATING WEIGHT:	15,905 LBS



DUAL HORIZONTAL FILTER (20895)
42"X118" W/ 8" 4-VALVE MANIFOLD

MM	DWG NO.	20895A-5	REV
	9/30/02	SHEET 1	OF 1



GENERAL NOTES:

1. MEDIA NOT INCLUDED WITH FILTER
2. CONCRETE SLAB TO BE DESIGNED BY OTHERS
3. FILTER MADE FROM HIGH STRENGTH FIBERGLASS AND RESINS
4. FILTERS HAVE UV STABILIZED CLEAR COAT
5. ALL INTERNAL COMPONENTS ARE CONSTRUCTED OF SCHEDULE 80 PVC.
6. MANHOLE CAN BE LOCATED ON EITHER SIDE OF FILTER. PLEASE SPECIFY AT TIME OF ORDER.
7. SAND DRAIN AND WATER DRAIN ARE PLACED ON THE SAME SIDE AS THE MANHOLE.

FILTER DATA

TOTAL SURFACE AREA:	68 SQ. FT.
MAX WORKING PRESSURE:	50 PSI.
MAX FLOW RATE:	20 GPM / SQ. FT.

MEDIA REQUIREMENTS

SAND:	3,800 LBS
GRAVEL:	0 LBS

WEIGHTS

FILTER SHIPPING WEIGHT	814 LBS EA.
FILTER OPERATING WEIGHT:	15,905 LBS

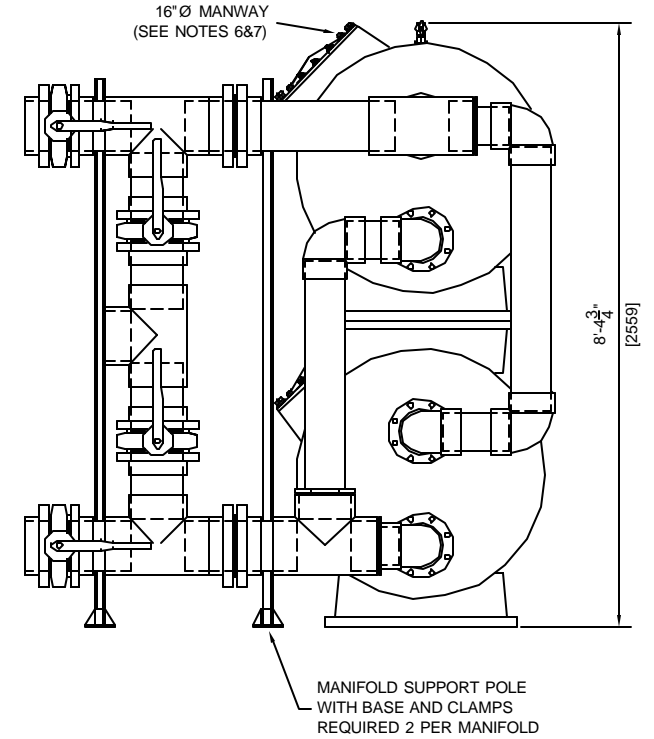
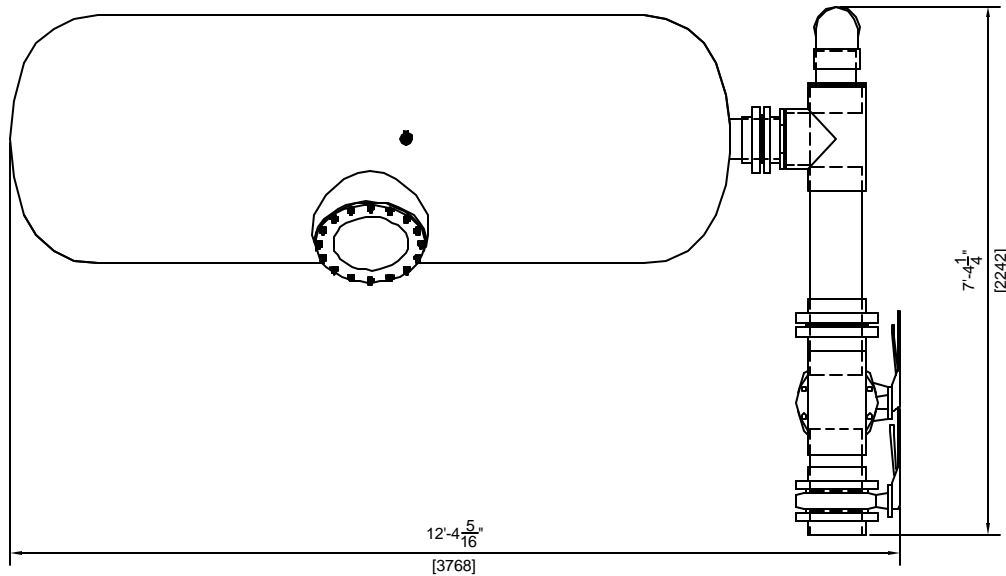
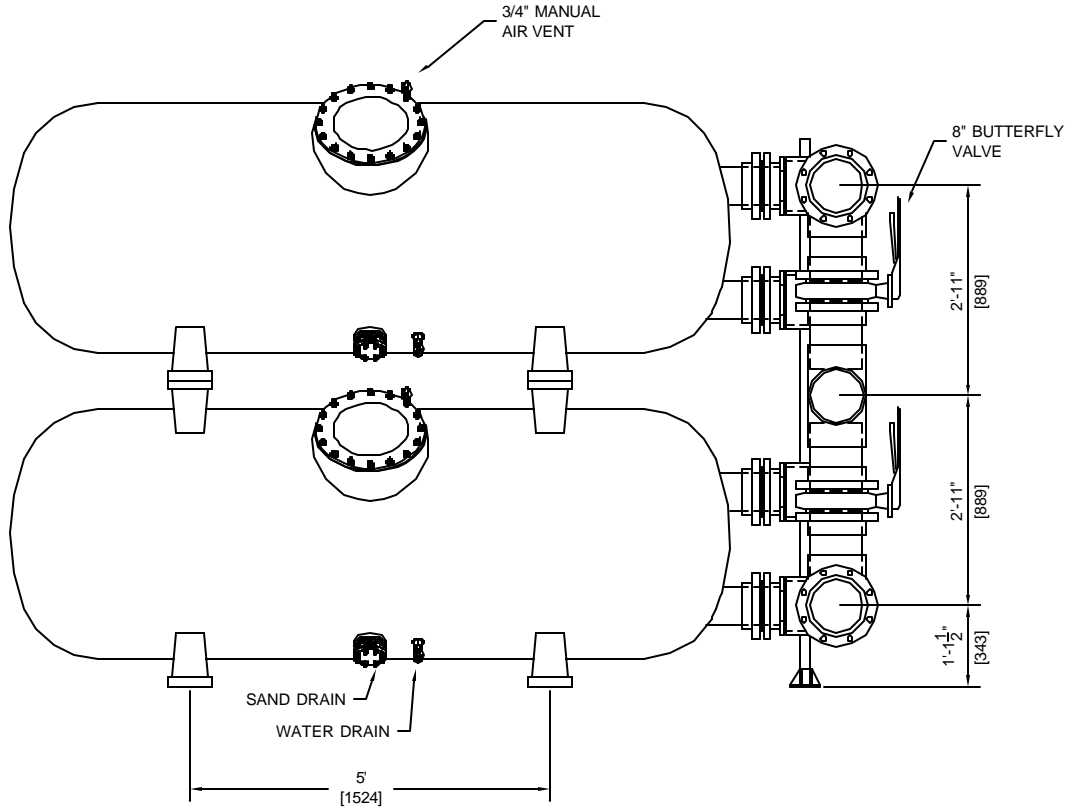
ASTRAL POOL



USA

DUAL HORIZONTAL FILTER (20895)
42"X118" W/ 8" 5-VALVE MANIFOLD

MM	DWG NO.	20895A-6	REV
	9/30/02	SHEET 1	OF 1



GENERAL NOTES:

1. MEDIA NOT INCLUDED WITH FILTER
2. CONCRETE SLAB TO BE DESIGNED BY OTHERS
3. FILTER MADE FROM HIGH STRENGTH FIBERGLASS AND RESINS
4. FILTERS HAVE UV STABILIZED CLEAR COAT
5. ALL INTERNAL COMPONENTS ARE CONSTRUCTED OF SCHEDULE 80 PVC.
6. MANHOLE CAN BE LOCATED ON EITHER SIDE OF FILTER. PLEASE SPECIFY AT TIME OF ORDER.
7. SAND DRAIN AND WATER DRAIN ARE PLACED ON THE SAME SIDE AS THE MANHOLE.

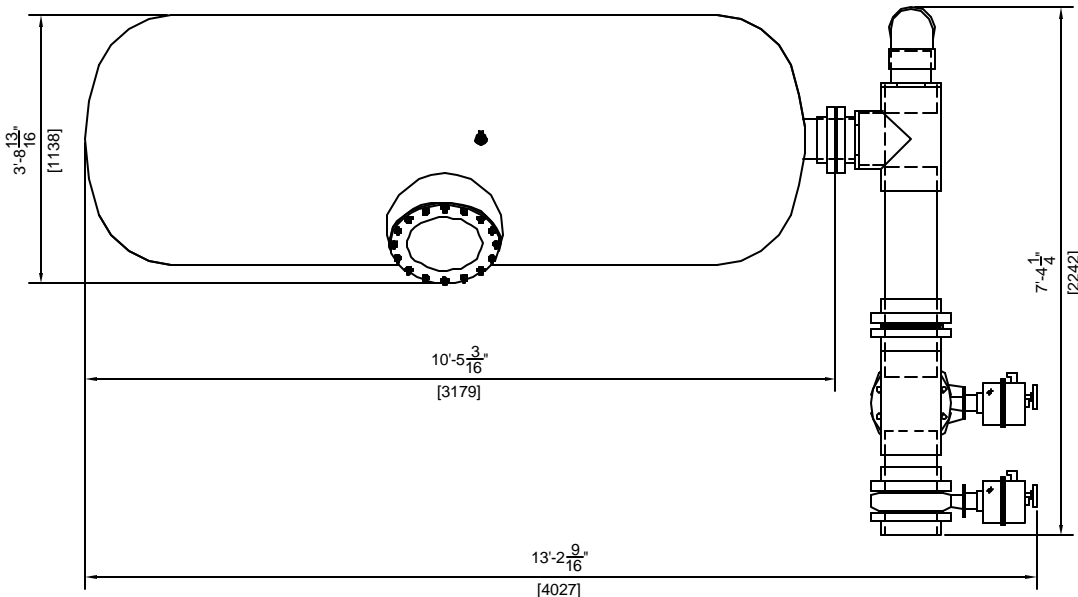
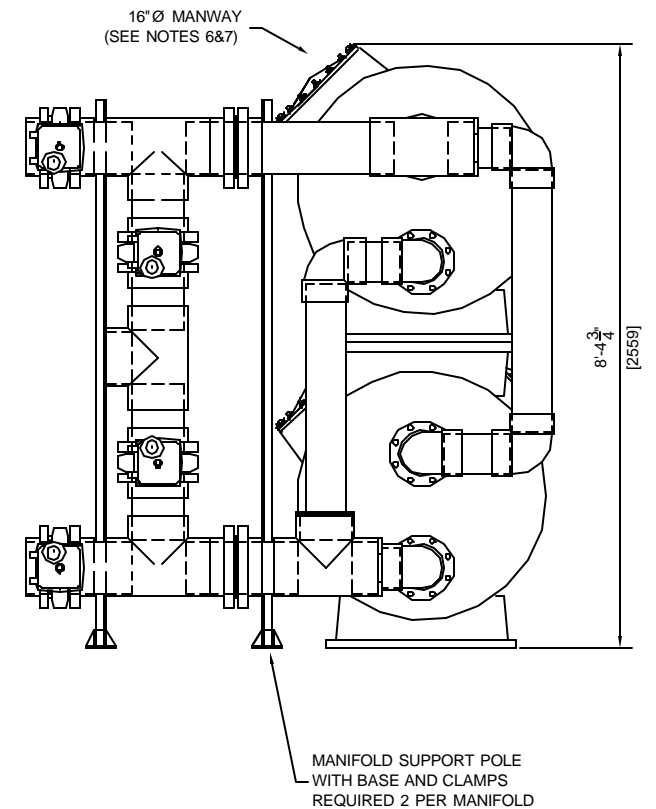
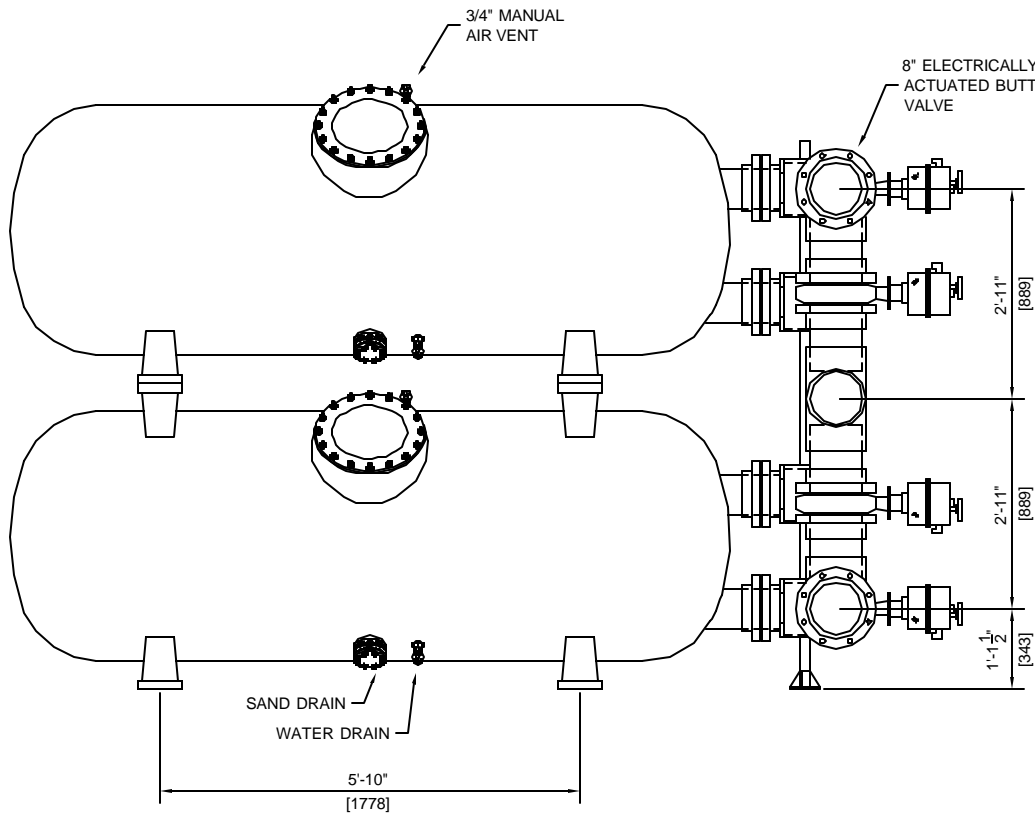
FILTER DATA

TOTAL SURFACE AREA:	68 SQ. FT.
MAX WORKING PRESSURE:	50 PSI.
MAX FLOW RATE:	20 GPM / SQ. FT.
MEDIA REQUIREMENTS	
SAND:	3,800 LBS
GRAVEL:	0 LBS
WEIGHTS	
FILTER SHIPPING WEIGHT:	814 LBS EA.
FILTER OPERATING WEIGHT:	15,905 LBS



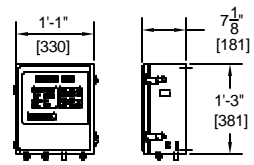
STACKED HORIZONTAL (20895)
42"x118"x6" W/ 8" 4 VALVE MANIFOLD

MM	DWG NO.	20895A-4	REV
	12/12/02	SHEET 1	OF 1



- GENERAL NOTES:**
1. MEDIA NOT INCLUDED WITH FILTER
 2. CONCRETE SLAB TO BE DESIGNED BY OTHERS
 3. FILTER MADE FROM HIGH STRENGTH FIBERGLASS AND RESINS
 4. FILTERS HAVE UV STABILIZED CLEAR COAT
 5. ALL INTERNAL COMPONENTS ARE CONSTRUCTED OF SCHEDULE 80 PVC.
 6. MANHOLE CAN BE LOCATED ON EITHER SIDE OF FILTER. PLEASE SPECIFY AT TIME OF ORDER.
 7. SAND DRAIN AND WATER DRAIN ARE PLACED ON THE SAME SIDE AS THE MANHOLE.

FILTER DATA	
TOTAL SURFACE AREA:	68 SQ. FT.
MAX WORKING PRESSURE:	50 PSI.
MAX FLOW RATE:	20 GPM / SQ. FT.
MEDIA REQUIREMENTS	
SAND:	3,800 LBS
GRAVEL:	0 LBS
WEIGHTS	
FILTER SHIPPING WEIGHT	814 LBS EA.
FILTER OPERATING WEIGHT:	15,905 LBS



AUTOMATIC CONTROL PANEL

ASTRAL POOL

USA

**DUAL HORIZONTAL FILTER (20895)
42"X118" W/ 8" 4V MANIFOLD AUTO**

MM	DWG. NO. 20895A-4 AUTO	REV
9/30/02	SHEET 1 OF 1	