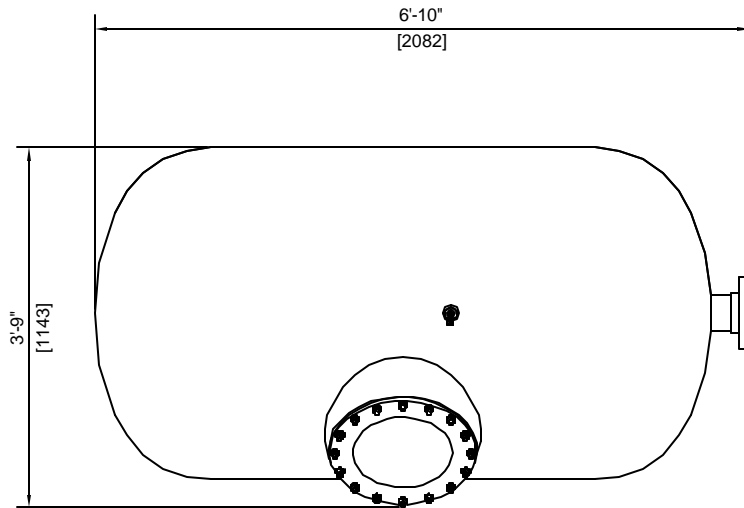
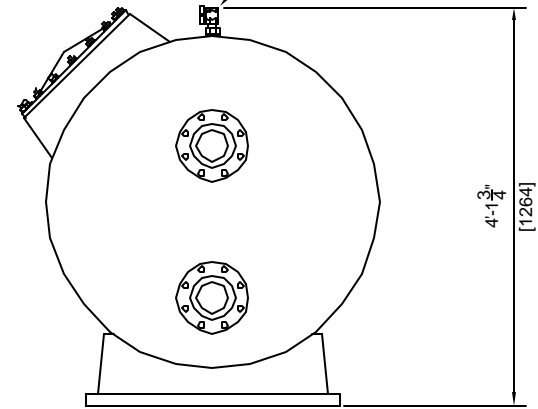


16"Ø MANWAY  
(SEE NOTES 6 & 7)

3/4" MANUAL  
AIR VENT



**GENERAL NOTES:**

1. MEDIA NOT INCLUDED WITH FILTER
2. CONCRETE SLAB TO BE DESIGNED BY OTHERS
3. FILTER MADE FROM HIGH STRENGTH FIBERGLASS AND RESINS
4. FILTERS HAVE UV STABILIZED CLEAR COAT
5. ALL INTERNAL COMPONENTS ARE CONSTRUCTED OF SCHEDULE 80 PVC.
6. MANHOLE CAN BE LOCATED ON EITHER SIDE OF FILTER. PLEASE SPECIFY AT TIME OF ORDER.
7. SAND DRAIN AND WATER DRAIN ARE PLACED ON THE SAME SIDE AS THE MANHOLE.

**FILTER DATA**

TOTAL SURFACE AREA:	21 SQ. FT.
MAX WORKING PRESSURE:	50 PSI.
MAX FLOW RATE:	20 GPM / SQ. FT.

**MEDIA REQUIREMENTS**

SAND:	2,100 LBS
GRAVEL:	0 LBS

**WEIGHTS**

FILTER SHIPPING WEIGHT	510 LBS
FILTER OPERATING WEIGHT:	4,550 LBS

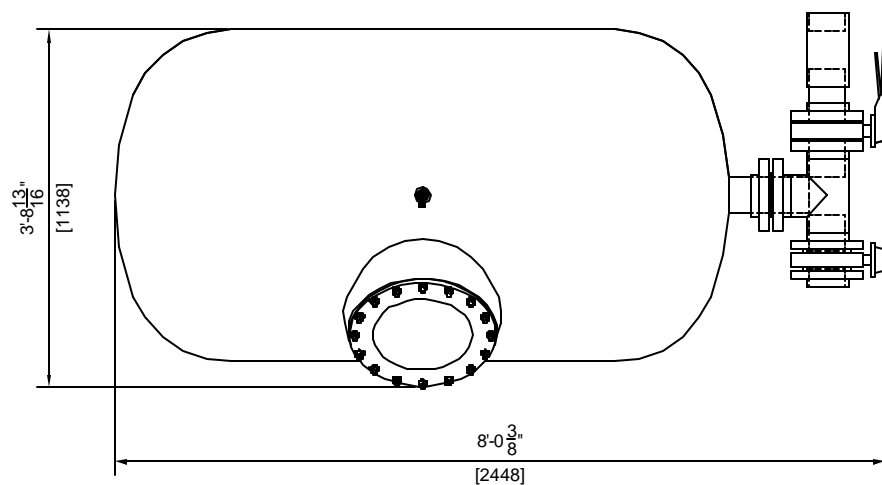
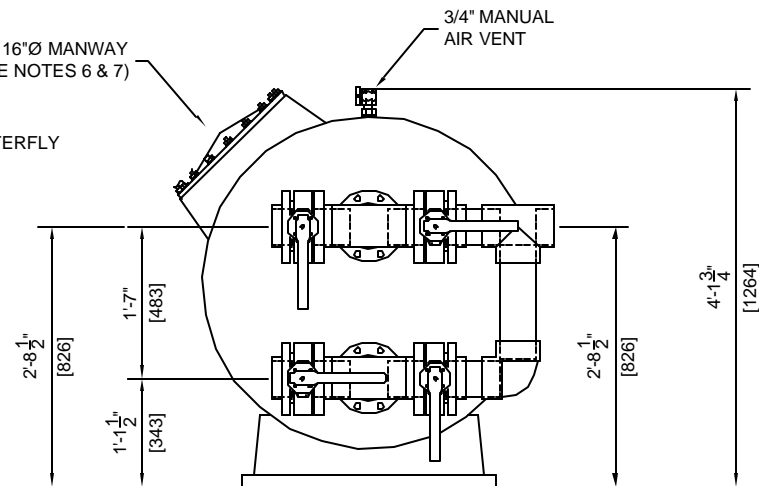
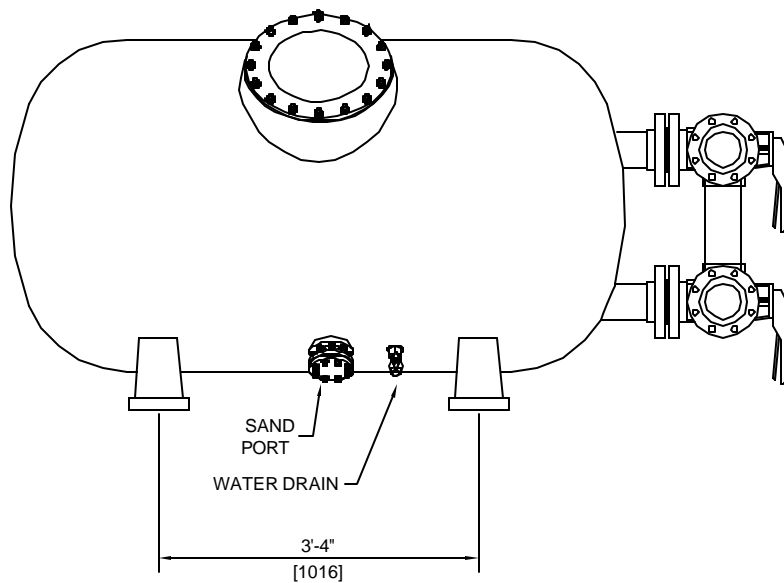
**ASTRAL POOL**



USA

**HORIZONTAL SAND FILTER (11319)**  
**42"x75" WITH 4" CONNECTIONS**

DRAWN BY: <b>MM</b>	DWG. NO: <b>11319A</b>	REV:
SCALE: 1/2" = 1'	DATE: 9/5/02	CHECKED:



**GENERAL NOTES:**

1. MEDIA NOT INCLUDED WITH FILTER
2. CONCRETE SLAB TO BE DESIGNED BY OTHERS
3. FILTER MADE FROM HIGH STRENGTH FIBERGLASS AND RESINS
4. FILTERS HAVE UV STABILIZED CLEAR COAT
5. ALL INTERNAL COMPONENTS ARE CONSTRUCTED OF SCHEDULE 80 PVC.
6. MANHOLE CAN BE LOCATED ON EITHER SIDE OF FILTER. PLEASE SPECIFY AT TIME OF ORDER.
7. SAND DRAIN AND WATER DRAIN ARE PLACED ON THE SAME SIDE AS THE MANHOLE.

**FILTER DATA**

TOTAL SURFACE AREA:	21 SQ. FT.
MAX WORKING PRESSURE:	50 PSI.
MAX FLOW RATE:	20 GPM / SQ. FT.

**MEDIA REQUIREMENTS**

SAND:	2,100 LBS
GRAVEL:	0 LBS

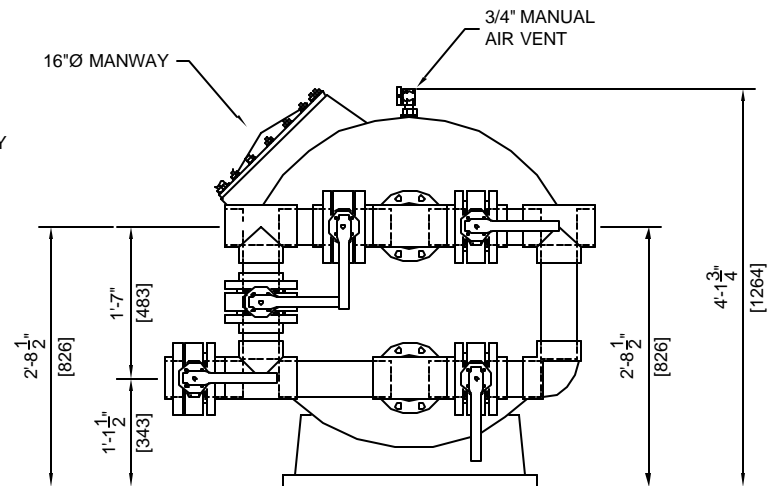
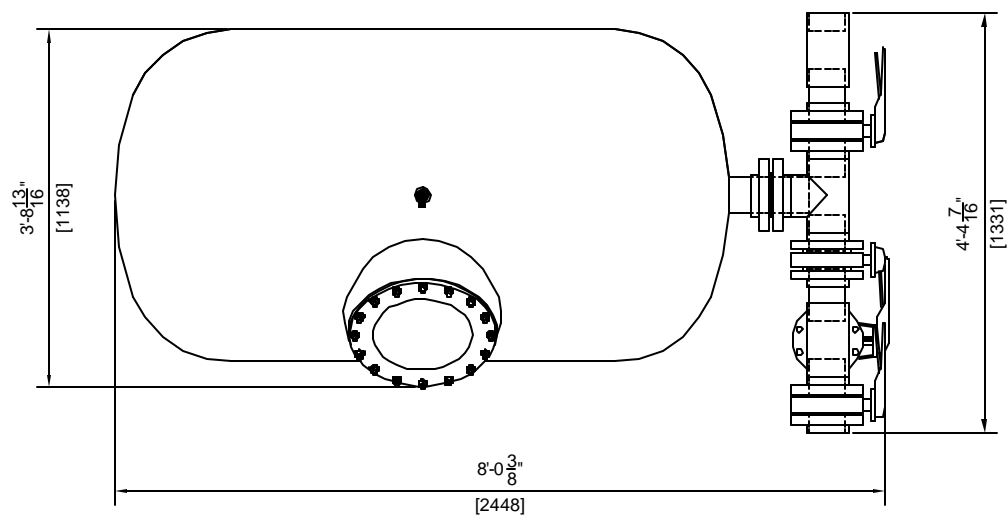
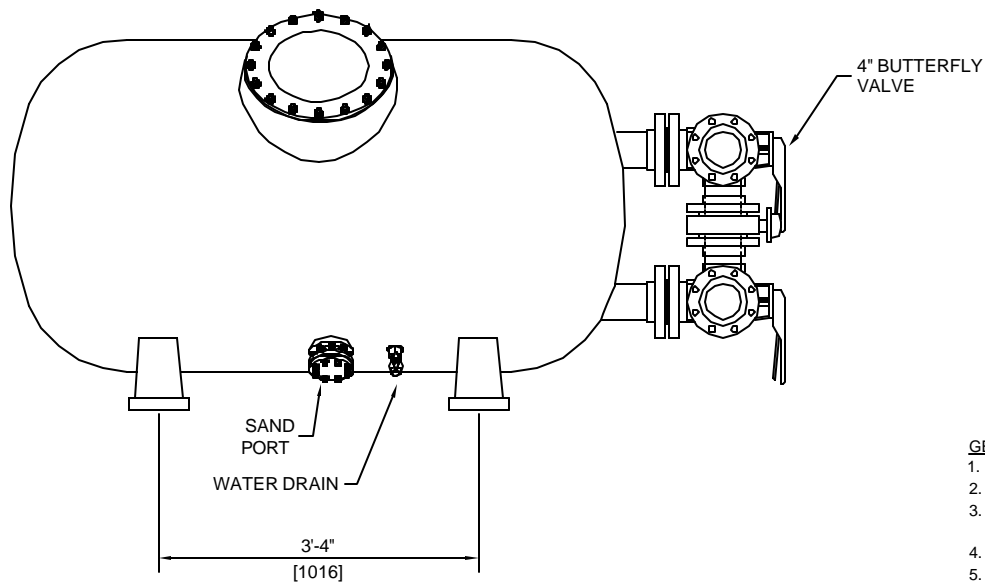
**WEIGHTS**

<b>FILTER SHIPPING WEIGHT</b>	<b>510 LBS</b>
<b>FILTER OPERATING WEIGHT:</b>	<b>4,550 LBS</b>



**HORIZONTAL SAND FILTER (11319)  
42"x75" WITH 4" 4-VALVE MANIFOLD**

DRAWN BY: <b>MM</b>	DWG. NO: <b>11319A-2</b>	REV:
SCALE: 1/2" = 1'	DATE: 9/5/02	CHECKED:



**GENERAL NOTES:**

1. MEDIA NOT INCLUDED WITH FILTER
2. CONCRETE SLAB TO BE DESIGNED BY OTHERS
3. FILTER MADE FROM HIGH STRENGTH FIBERGLASS AND RESINS
4. FILTERS HAVE UV STABILIZED CLEAR COAT
5. ALL INTERNAL COMPONENTS ARE CONSTRUCTED OF SCHEDULE 80 PVC.
6. MANHOLE CAN BE LOCATED ON EITHER SIDE OF FILTER. PLEASE SPECIFY AT TIME OF ORDER.
7. SAND DRAIN AND WATER DRAIN ARE PLACED ON THE SAME SIDE AS THE MANHOLE.

**FILTER DATA**

TOTAL SURFACE AREA:	21 SQ. FT.
MAX WORKING PRESSURE:	50 PSI.
MAX FLOW RATE:	20 GPM / SQ. FT.

**MEDIA REQUIREMENTS**

SAND:	2,100 LBS
GRAVEL:	0 LBS

**WEIGHTS**

FILTER SHIPPING WEIGHT	510 LBS
FILTER OPERATING WEIGHT:	4,590 LBS

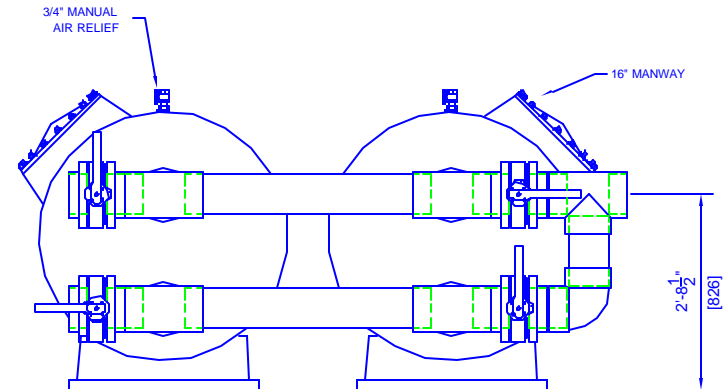
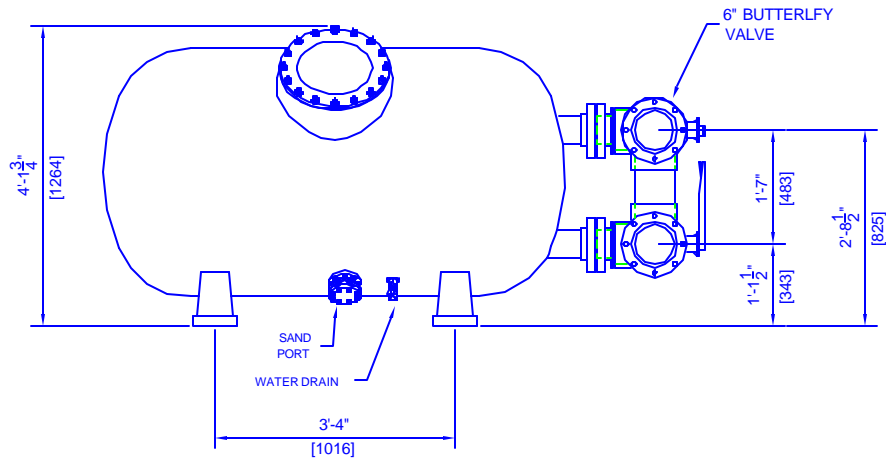
**ASTRAL POOL**



USA

**HORIZONTAL SAND FILTER (11319)**  
42x75 WITH 4" 5-VALVE MANIFOLD

DRAWN BY: <b>MM</b>	DWG. NO: <b>11319-3</b>	REV:
SCALE: 1/2" = 1'	DATE: 9/5/02	CHECKED:



#### APPROVAL REQUIRED

AS DRAWN ☐

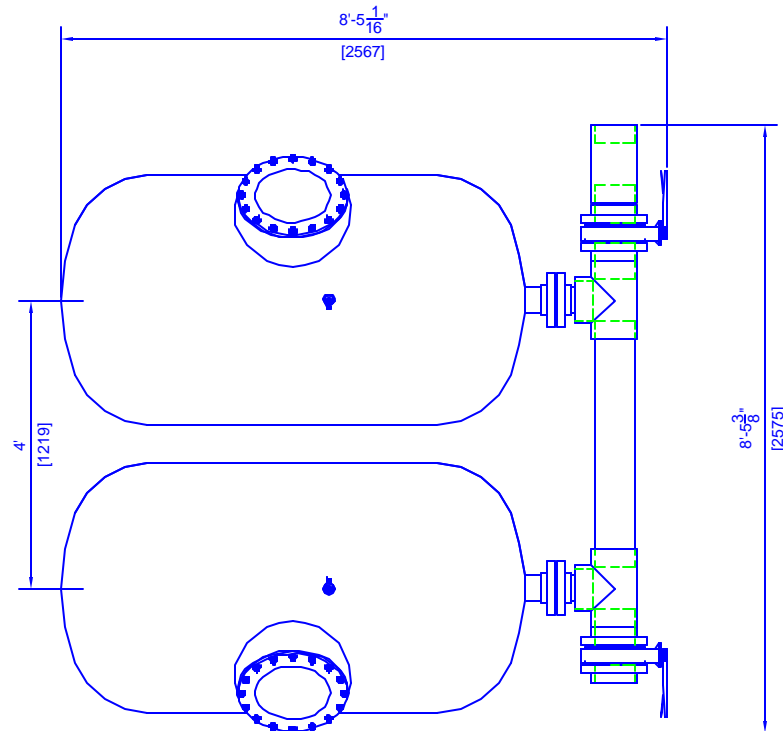
AS NOTED ☐

NOT APPROVED: ☐

APPROVED BY: \_\_\_\_\_

DATE: \_\_\_\_\_

PLEASE APPROVE LAYOUT & MANWAY LOCATION



#### GENERAL NOTES:

1. MEDIA NOT INCLUDED WITH FILTER
2. CONCRETE SLAB TO BE DESIGNED BY OTHERS
3. FILTER MADE FROM HIGH STRENGTH FIBERGLASS AND RESINS
4. FILTERS HAVE UV STABILIZED CLEAR COAT
5. ALL INTERNAL COMPONENTS ARE CONSTRUCTED OF SCHEDULE 80 PVC.
6. MANHOLE CAN BE LOCATED ON EITHER SIDE OF FILTER. PLEASE SPECIFY AT TIME OF ORDER.
7. SAND DRAIN AND WATER DRAIN ARE PLACED ON THE SAME SIDE AS THE MANHOLE.

#### FILTER DATA

TOTAL SURFACE AREA:	42 SQ. FT.
MAX WORKING PRESSURE:	50 PSI.
MAX FLOW RATE:	20 GPM / SQ. FT.

#### MEDIA REQUIREMENTS

SAND:	2,100 LBS EA.
GRAVEL:	0 LBS EA.

#### WEIGHTS

<b>FILTER SHIPPING WEIGHT</b>	<b>510 LBS EA.</b>
<b>SYSTEM OPERATING WEIGHT:</b>	<b>9,100 LBS</b>

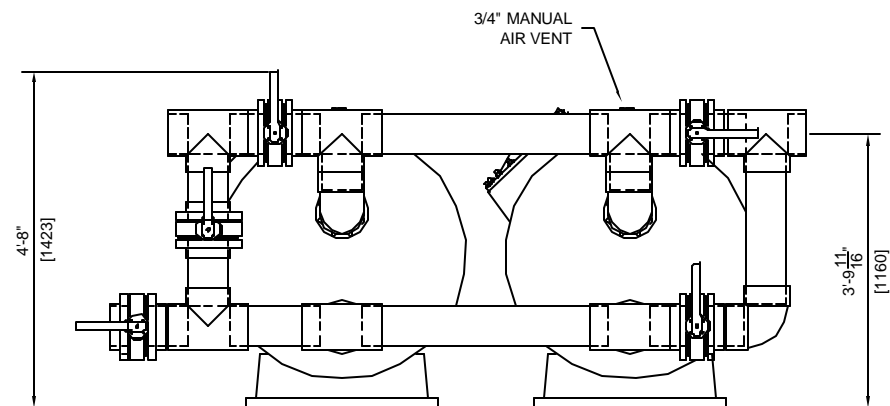
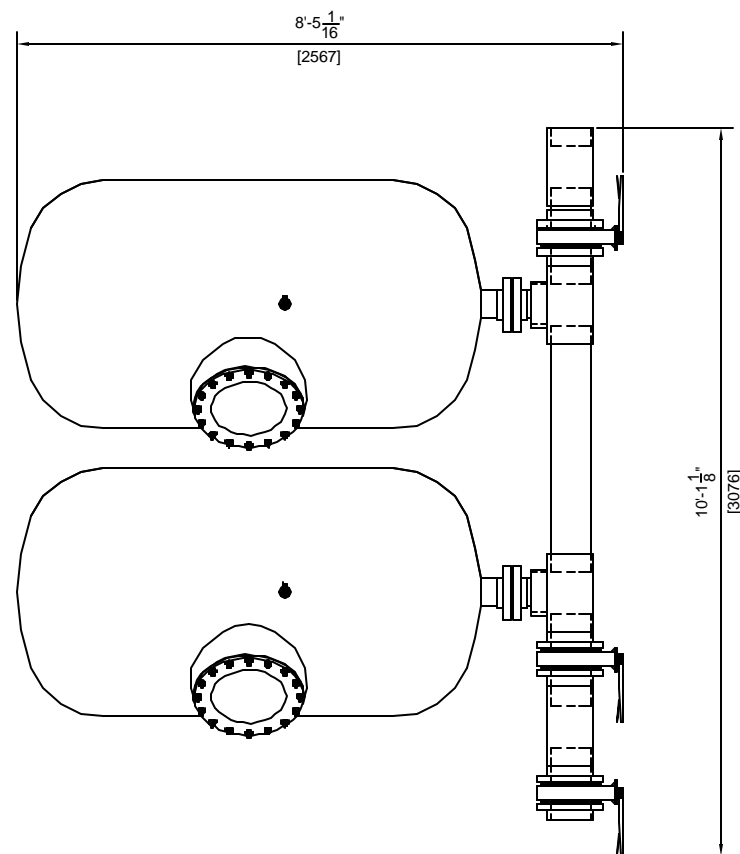
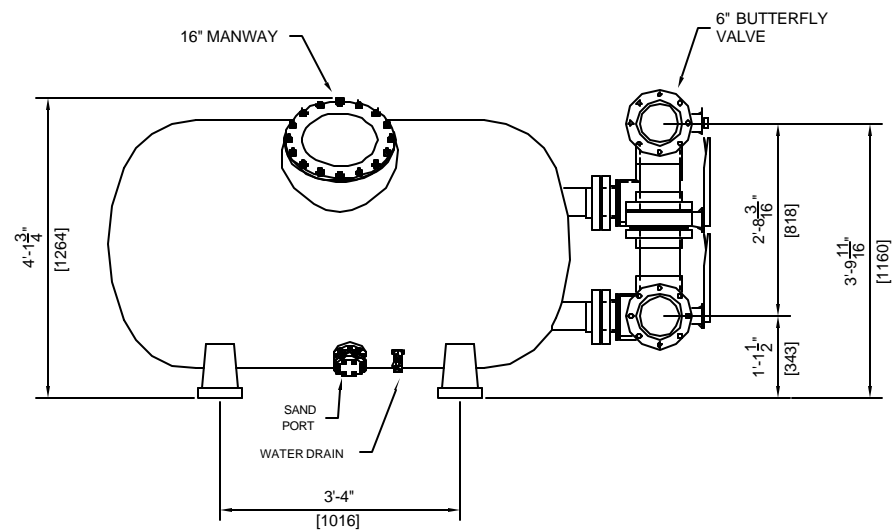
**ASTRAL POOL**

USA



DUAL HORIZONTAL FILTER (11319)  
42X75 W/ 6" 4 VALVE MANIFOLD

MM	11319-5
9/30/02	



**GENERAL NOTES:**

1. MEDIA NOT INCLUDED WITH FILTER
2. CONCRETE SLAB TO BE DESIGNED BY OTHERS
3. FILTER MADE FROM HIGH STRENGTH FIBERGLASS AND RESINS
4. FILTERS HAVE UV STABILIZED CLEAR COAT
5. ALL INTERNAL COMPONENTS ARE CONSTRUCTED OF SCHEDULE 80 PVC
6. MANHOLE CAN BE LOCATED ON EITHER SIDE OF FILTER. PLEASE SPECIFY AT TIME OF ORDER.
7. SAND DRAIN AND WATER DRAIN ARE PLACED ON THE SAME SIDE AS THE MANHOLE.

**FILTER DATA**

TOTAL SURFACE AREA:	42 SQ. FT.
MAX WORKING PRESSURE:	50 PSI.
MAX FLOW RATE:	20 GPM / SQ. FT.

**MEDIA REQUIREMENTS**

SAND:	2,100 LBS EA.
GRAVEL:	0 LBS EA.

**WEIGHTS**

<b>FILTER SHIPPING WEIGHT</b>	<b>510 LBS EA.</b>
<b>SYSTEM OPERATING WEIGHT:</b>	<b>9,100 LBS</b>

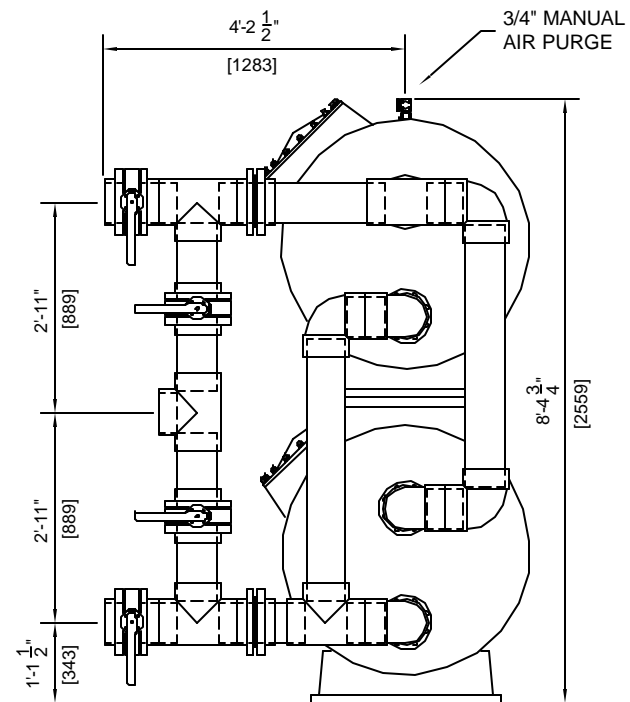
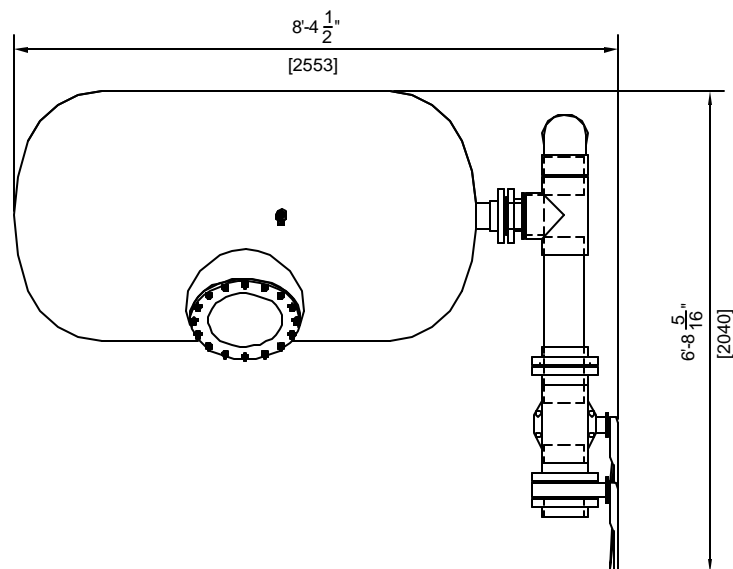
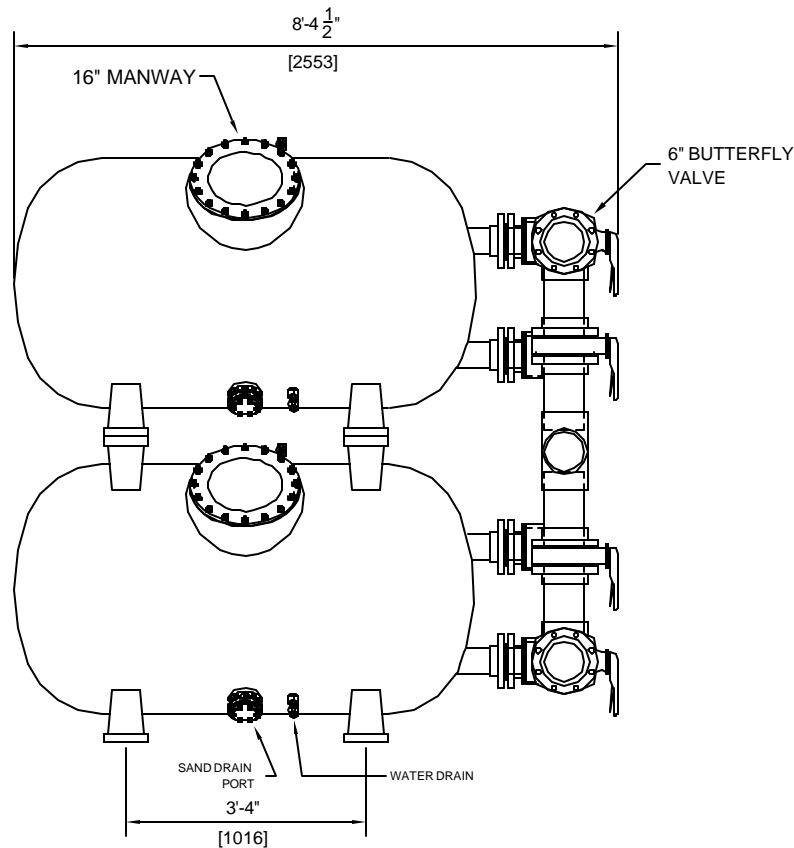
**ASTRAL POOL**

USA



DUAL HORIZONTAL FILTER (11319)  
42x75 W/ 6" 5 VALVE MANIFOLD

MM	11319-5
12/10/02	



**GENERAL NOTES:**

1. MEDIA NOT INCLUDED WITH FILTER
2. CONCRETE SLAB TO BE DESIGNED BY OTHERS
3. FILTER MADE FROM HIGH STRENGTH FIBERGLASS AND RESINS
4. FILTERS HAVE UV STABILIZED CLEAR COAT
5. ALL INTERNAL COMPONENTS ARE CONSTRUCTED OF SCHEDULE 80 PVC.
6. MANHOLE CAN BE LOCATED ON EITHER SIDE OF FILTER. PLEASE SPECIFY AT TIME OF ORDER.
7. SAND DRAIN AND WATER DRAIN ARE PLACED ON THE SAME SIDE AS THE MANHOLE.

**FILTER DATA**

TOTAL SURFACE AREA:	21 SQ. FT.
MAX WORKING PRESSURE:	50 PSI.
MAX FLOW RATE:	20 GPM / SQ. FT.

**MEDIA REQUIREMENTS**

SAND:	2,100 LBS
GRAVEL:	0 LBS

**WEIGHTS**

<b>FILTER SHIPPING WEIGHT</b>	<b>510 LBS</b>
<b>FILTER OPERATING WEIGHT:</b>	<b>9,400 LBS</b>

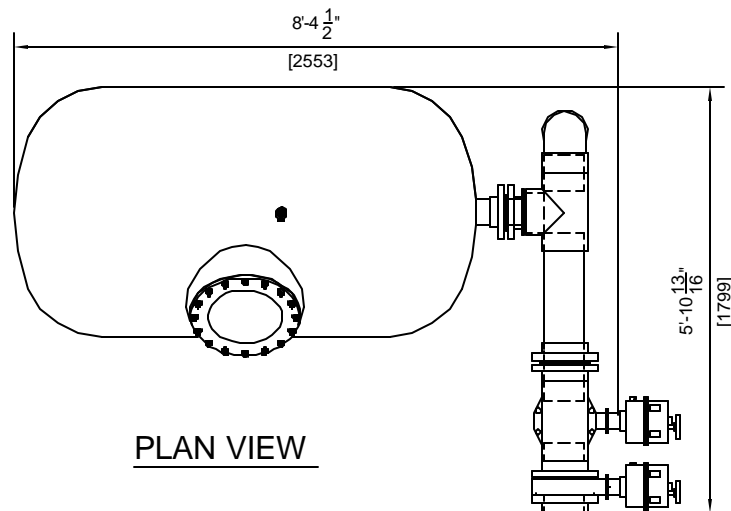
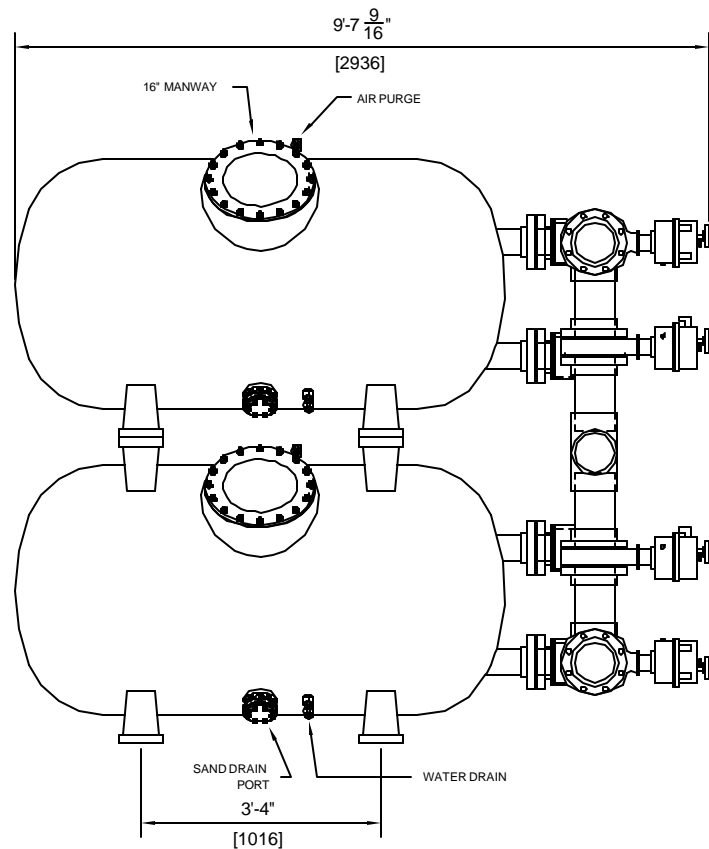
**ASTRAL POOL**



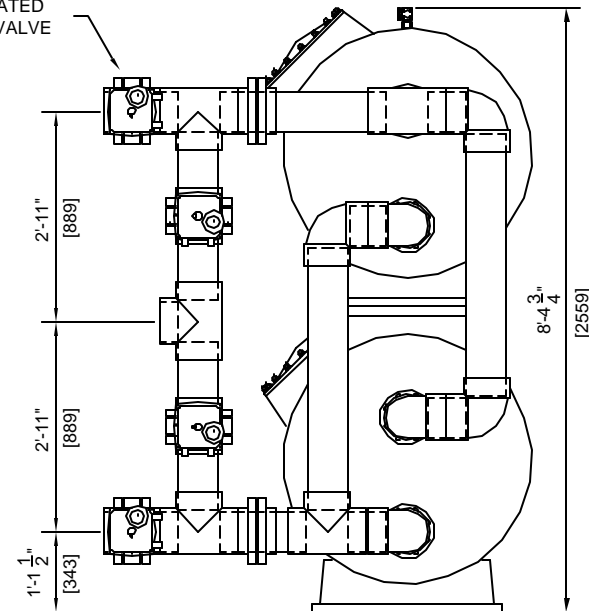
USA

**STACKED HORIZONTAL FILTER (11319)**  
**42"x75" W/ 6" 4-VALVE MANIFOLD**

DRAWN BY:	MM	DWG. NO:	11319-4	REV:
SCALE: 3/8" = 1'	DATE: 9/26/02	CHECKED:		

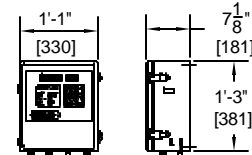


6" ELECTRICALLY ACTUATED BUTTERFLY VALVE



**GENERAL NOTES:**

1. MEDIA NOT INCLUDED WITH FILTER
2. CONCRETE SLAB TO BE DESIGNED BY OTHERS
3. FILTER MADE FROM HIGH STRENGTH FIBERGLASS AND RESINS
4. FILTERS HAVE UV STABILIZED CLEAR COAT
5. ALL INTERNAL COMPONENTS ARE CONSTRUCTED OF SCHEDULE 80 PVC.
6. MANHOLE CAN BE LOCATED ON EITHER SIDE OF FILTER. PLEASE SPECIFY AT TIME OF ORDER.
7. SAND DRAIN AND WATER DRAIN ARE PLACED ON THE SAME SIDE AS THE MANHOLE.



**AUTOMATIC  
CONTROL PANEL**

**FILTER DATA**

TOTAL SURFACE AREA:	21 SQ. FT.
MAX WORKING PRESSURE:	50 PSI.
MAX FLOW RATE:	20 GPM / SQ. FT.

**MEDIA REQUIREMENTS**

SAND:	2,100 LBS
GRAVEL:	0 LBS

**WEIGHTS**

<b>FILTER SHIPPING WEIGHT</b>	<b>510 LBS</b>
<b>FILTER OPERATING WEIGHT:</b>	<b>9,500 LBS</b>

**ASTRAL POOL**

USA



**STACKED HORIZONTAL FILTER (11319)  
42"x75" W/ 6" 4-VALVE AUTO MANIFOLD**

DRAWN BY:	MM	DWG. NO:	11319-4 AUTO	REV:
SCALE: 3/8" = 1'	DATE: 9/27/02	CHECKED:		