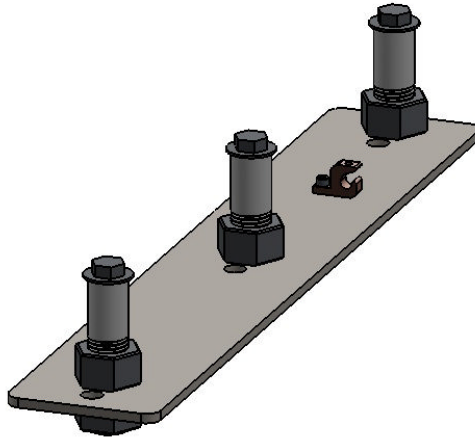




# Aqua Creek Products

The Total Solution for Pool and Spa Access



## PRO POOL-XR™ ANCHOR JIG ASSEMBLY

**PART #: F-910SAJP**

**350 LB. [159 kg] MAXIMUM CAPACITY**

**MANDATORY – LEAVE THIS MANUAL WITH LIFT OWNER**

### **- READ CAREFULLY -**

Check entire box and inside all packing materials for parts. Before beginning assembly, read the instructions and identify parts using the figures and parts listed in this document. It is critical that all parts be carefully inspected by the installer prior to installation to ensure that no damage occurred in transit and that a damaged part is not used. If any damage occurred in transit, Aqua Creek Products, LLC must be notified within three days of receipt of unit. Proper installation cannot be overstressed, as an improper installation voids Aqua Creek's warranty and may affect the safety of the user.

9889 GARRYMORE LANE  
MISSOULA, MT 59808  
1-888-687-3552  
FAX: 406-549-2602

Inspected And Verified To Meet  
Applicable Sections of ADA  
Guidelines Section 1009.2 By

**wyle**  
laboratories

A Registered ISO 9001  
Laboratory



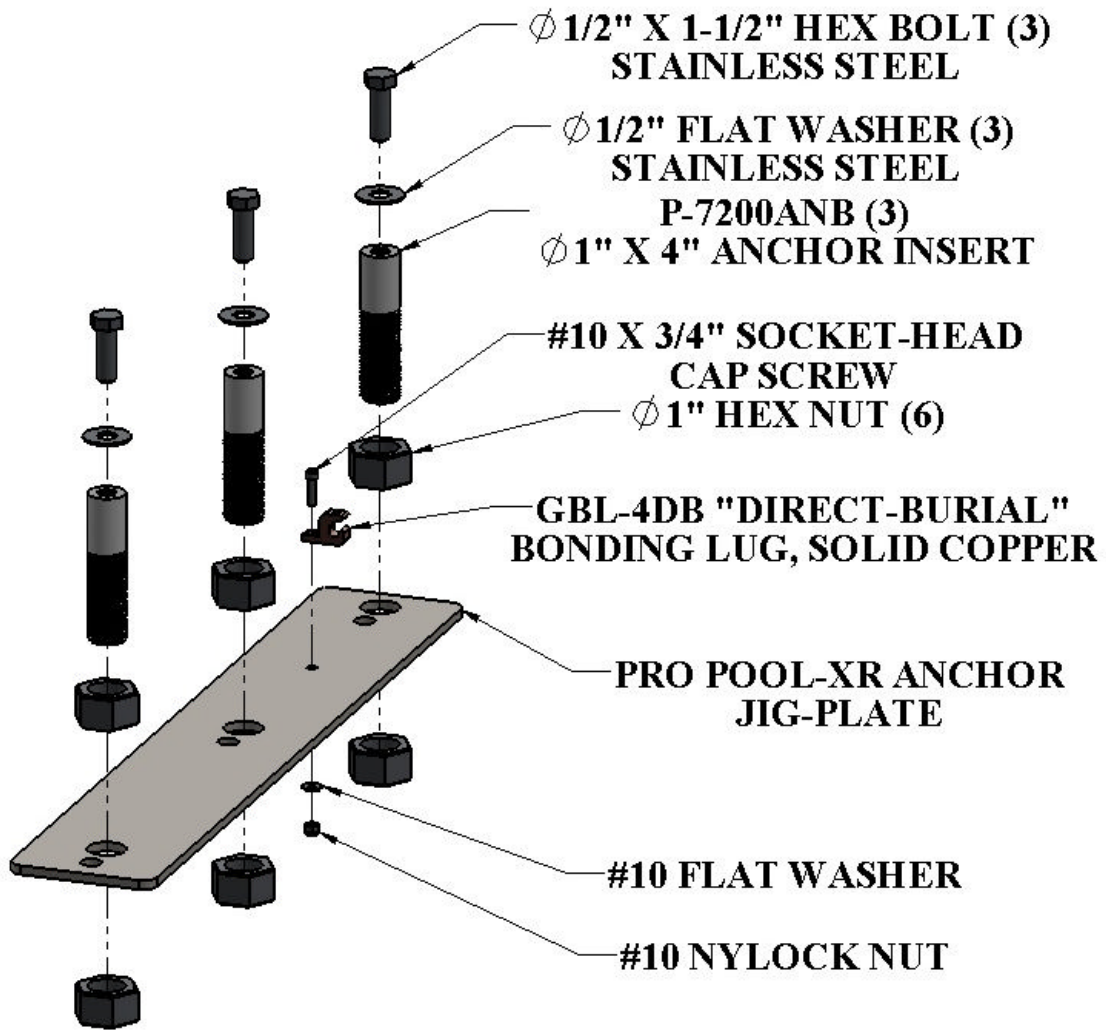
## **WARNING**

### **IMPORTANT SAFETY INSTRUCTIONS**

- 1. READ AND FOLLOW ALL INSTRUCTIONS. LIFT SAFETY CAN ONLY BE ENSURED IF THE LIFT IS INSTALLED AND OPERATED PROPERLY – AS PER THESE INSTRUCTIONS.**
- 2. WARNING- TO REDUCE RISK OF INJURY, DO NOT PERMIT CHILDREN TO USE THIS PRODUCT UNLESS THEY ARE CLOSELY SUPERVISED AT ALL TIMES.**
- 3. WARNING- DO NOT PERMIT CHILDREN TO PLAY ON THIS PRODUCT.**
- 4. WARNING- NEVER APPLY DIRECT WATER PRESSURE TO ELECTRONIC COMPONENTS.**
- 5. DO NOT USE THE PRO POOL LIFT FOR WATER-DRAFTS OVER 12" (DECK TO WATERLINE).**
- 6. NEVER OPERATE THIS LIFT UNDER LOAD WITH NO WATER (DRY POOL).**
- 7. WARNING – FOR SAFETY REASONS NEVER SWIM ALONE.**
- 8. SAVE A COPY OF THESE INSTRUCTIONS.**

# **PRO POOL-XR™ ANCHOR JIG ASSEMBLY**

The Pro Pool-XR™ Anchor-Jig Assembly is shown below with all of the parts labeled. Before beginning installation familiarize yourself with the parts and their locations. Also review the information on page 3 “ADA GUIDELINES” before choosing the anchor location.

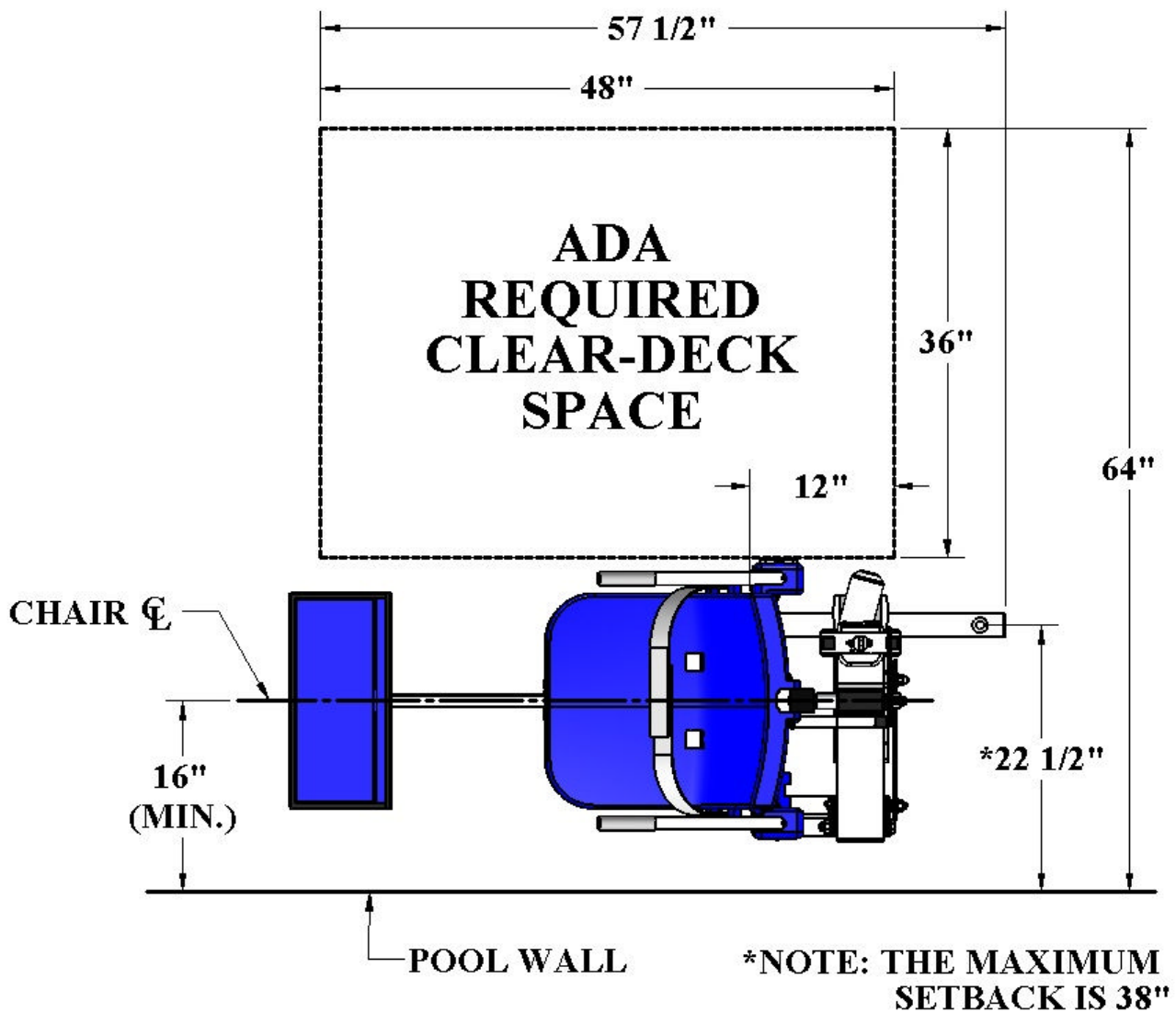


# INSTALLATION: ADA GUIDELINES

## ADA REQUIREMENTS:

The PRO POOL-XR™ is designed and manufactured to be 100% ADA compliant. But for the installed lift to be 100% compliant the installation must meet the requirement for CLEAR DECK SPACE as shown in the diagram to the left. To be compliant, install the lift at 22-1/2 inches [572mm] minimum from the pool edge, and make sure the deck has the required CLEAR DECK SPACE as shown. The setback distance can be as much as 38", and will still be ADA compliant.

**NOTE: ADA requires a deck slope of no greater than 1:48 as shown.**



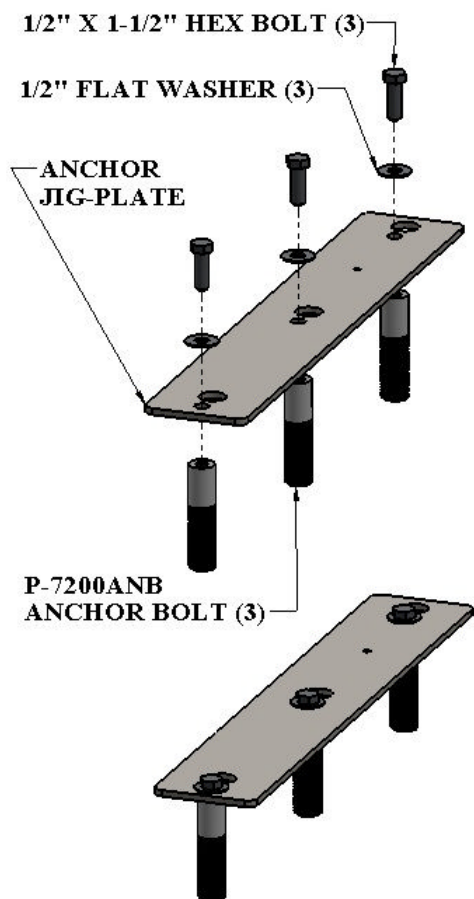
# ANCHOR INSTALLATION: CORE-DRILL RETRO-FIT

## Required Materials & Tools:

- Core drill and 1-1/2" core drill bit
- Tape Measure
- Marking Pen suitable for writing on concrete
- Hammer
- Cold Chisel
- Torpedo Level
- High Strength 2 part construction epoxy\*
- Black electrical tape (Optional)
- Masking tape

\*Aqua Creek recommends Hilti™ Brand RE-500-SD or an alternative approved adhesive.

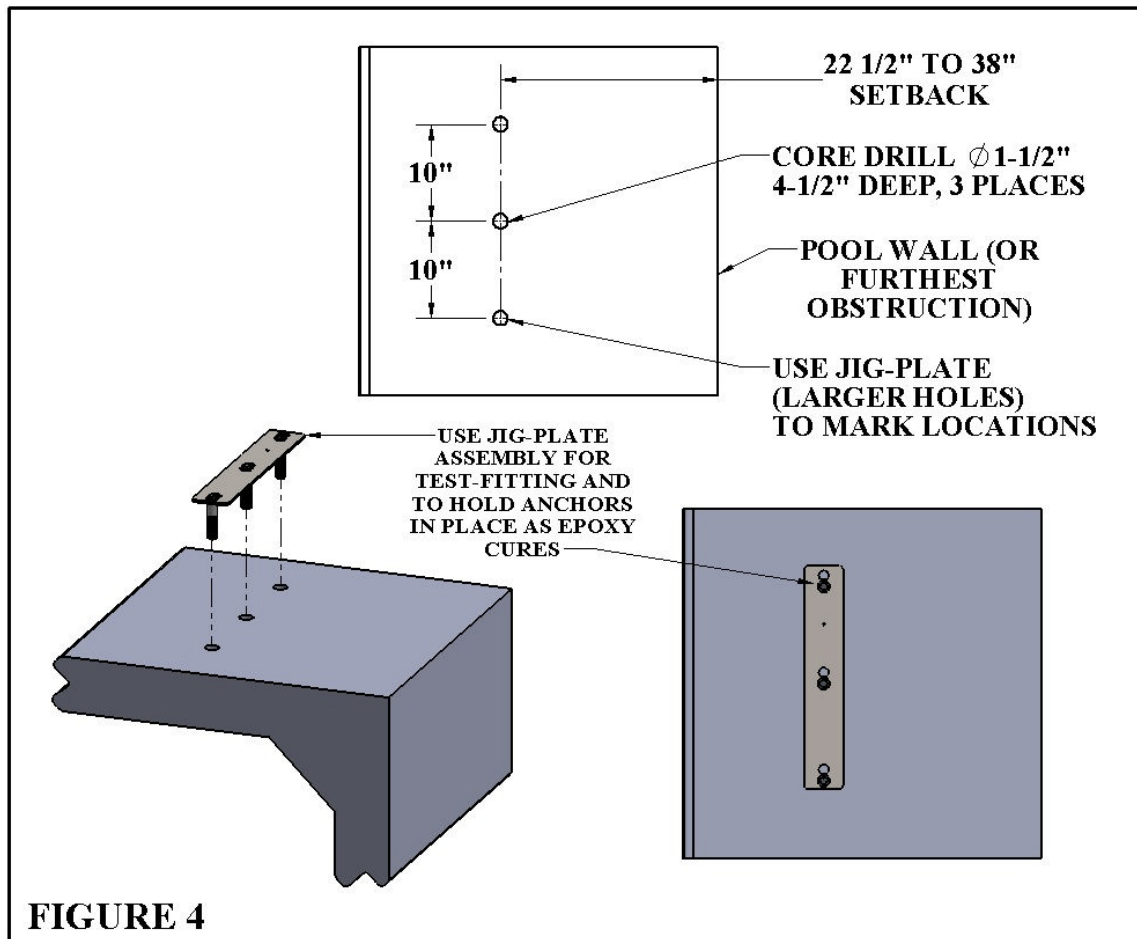
- 1) Locate the anchor jig-plate, and three (3) anchor bolts with mounting hardware.
- 2) Using the larger holes in the anchor jig-plate as a template, mark the three hole-locations with a marking pen on the pool deck. Verify that the **CENTER LINE** of the anchors are no more than 22-1/2 inches from the pools edge. See **FIGURE 1, page 4**.
- 3) Using the core drill and the 1-1/2" core drill bit, drill out the three hole locations marked on the pool deck to a depth of about 4 1/2".
  - a. **NOTE:** You can use black electrical tape on the end of the drill bit as a visual marker to indicate the proper depth that you need to drill to.



- b. **NOTE:** Depending on your local grounding requirements, you may need to drill one hole larger than the others so that you can ground at least one of the anchor inserts. In some cases saw cutting a portion of the deck out completely might be required. In this case, follow the "Saw Cutting Retro-Fit Instructions".

- 4) Remove the core from the holes using a hammer and chisel. The holes should be completely dry and clear of any debris before installing the anchors into them.
- 5) Remove the nuts from the threaded anchor bolts and the black protective cover from the end of the anchor bolt, exposing the internal threads that will accept the mounting hardware.
- 6) Using the smaller holes in the anchor jig-plate, thread the mounting hardware through the anchor jig-plate holes and into the ends of the three anchor bolts so that the tops of the bolts are flush with the **BOTTOM** of the jig-plate (see diagram on left). **IMPORTANT:** Use the enclosed packet of anti-seize lube on the threads of the hardware to prevent the hardware from seizing in the anchor inserts.
  - a. **NOTE:** It is recommended that you apply tape to the bottom of the anchor plate around the holes so that when and if the epoxy oozes out of the holes, it does not secure the anchor plate to the pool deck.

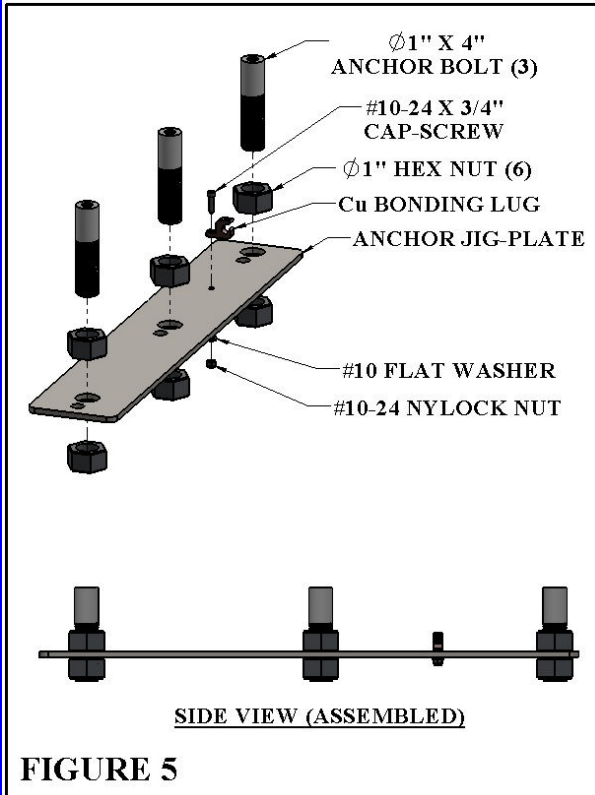
- 7) Allow for a way to bond at least one of the anchor inserts according to your local code requirements. This is typically accomplished with 8-AWG solid-copper wire attached to the pool's bonding grid. For more information see NEC Article 680.26.
- 8) Before putting epoxy into the holes and setting the anchor inserts, you will want to test fit the anchor inserts in the pre-drilled holes first to make sure they line up properly. You can do this by picking up the anchor plate with the three (3) anchor bolts attached to the underside and carefully place them into the three holes drilled in the deck. Using a torpedo level on the plate, verify that you can level up the anchor system. If they do not line up you may have to enlarge your holes.
- 9) After verifying that the anchor inserts line up with the holes properly and you can level the anchor assembly, remove the anchor assembly and fill each hole in the pool deck at least half full of two part construction epoxy (not included). *Aqua Creek recommends either Hilti™ Brand RE-500-SD or an alternative approved adhesive.*
- 10) Pick up the anchor assembly with the three (3) anchor bolts attached to the underside and carefully place them into the holes drilled in the deck. As you place the anchor bolts that are attached to the anchor plate, wiggle the jig-plate assembly a little to make sure the epoxy gets on all sides of the anchor bolts.
- 11) Once the anchor bolts are placed into the holes, use a small torpedo level on the anchor plate to make sure you are level and plumb.
- 12) Allow the epoxy to set up according to the manufacturers recommendations and remove the hardware and the anchor jig-plate. You can now safely mount the lift to the anchors using the same hardware you used to mount the anchor inserts to the underside of the anchor jig-plate. The anchor jig-plate can be recycled or used for installing a second set of anchors in another location.



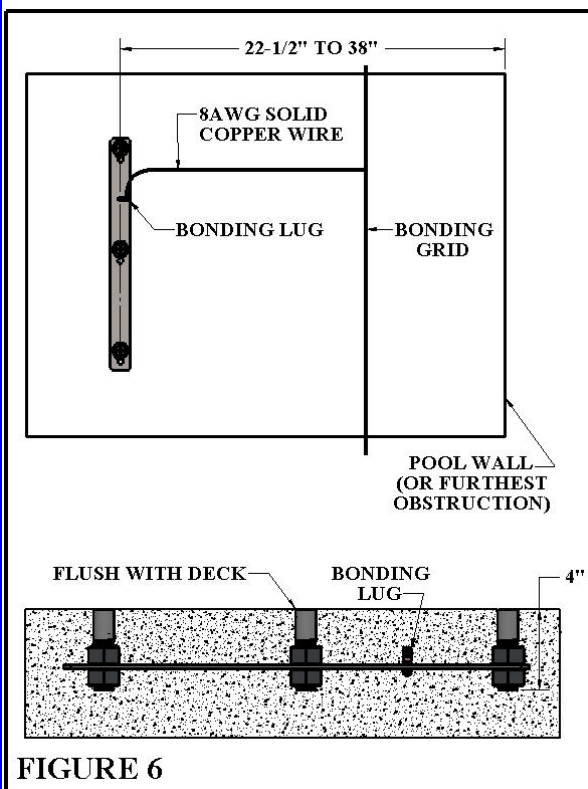
# ANCHOR INSTALLATION: SAW-CUT RETRO-FIT

## Required Materials & Tools:

- Concrete saw with Diamond blade
- Tape Measure
- 4' long Straight edge or chalk line
- Sledge Hammer
- Cold Chisel
- Torpedo Level
- Sting line
- Concrete & Concrete tools
- #4 Rebar



- 1) Locate the anchor plate, four (4) anchor inserts with nuts and mounting hardware).
- 2) Mark out a section of the pool deck that you are removing using a chalk line or straight edge and a marker. You should plan on removing at least a 24 inch long by 6-inch wide section.
- 3) Using the saw with the diamond blade, make your cuts along the lines that you marked.
- 4) Using the sledge hammer, break up the concrete within the area that you cut and remove the pieces.
- 5) After you have removed the portion of the deck, verify that your new deck will be able to be at least 8 inches deep.
- 6) Remove ONE of the nuts from each of the anchor inserts and place the anchor inserts through the larger holes in the anchor plate. Thread the nut back on the other side of the anchor insert so that the anchor plate is sandwiched between the nuts. (See diagram on left).
- 7) Install rebar in the open area of the deck. Tie the rebar into the existing deck if possible.
- 8) Set the anchor system in place making sure that the center line of the front anchor inserts are no more than 22-1/2 inches away from the pool's edge.
- 9) Using the string line or a straight edge, make sure the top of each anchor bolt is level and flush with the **FINISHED** deck surface. Each anchor bolt can be adjusted individually by turning the nuts with a large wrench.
- 10) Bond the anchor system using the bonding lug on the anchor jig-plate. The anchor should be bonded to the pool's bonding-grid according to your local code requirements. (See NEC Article 680.26).
- 11) Pour your concrete and finish the pool deck surface.
- 12) Once the concrete has cured, install the lift by aligning the holes in the lifts base with the anchors installed in the deck. Secure the lift to the deck using the stainless steel hardware that comes with it. (See drawing below)
  - a. *NOTE: Use Anti-Seize lube on the hardware to prevent the hardware from seizing in the anchor inserts.*



# ANCHOR INSTALLATION: NEW CONSTRUCTION

For installations where a new deck is being poured, or where a dedicated pad is being poured just for the pool lift, the concrete must satisfy the following requirements.

**YOUR POOL DECK MUST BE AT LEAST 3-FEET LONG BY 3-FEET WIDE BY 8-INCHES THICK. IT MUST BE REINFORCED WITH ONE MAT OF FOUR (4) #4 REINFORCING BARS (REBAR) 2" CLEAR MIN FROM THE TOP OF THE DECK.**

Obviously you may make the deck larger than this – which is almost always the case when putting in a deck that surrounds the pool. Note that the entire deck does not need to be 8" thick, but that the area around the installed lift, 36" by 36", should be 8" thick at a minimum. The rest of the deck may be thinner – 4" is typical – as long as it is 8" thick around the lift.

The entire deck should be reinforced with four (4) sticks of #4 rebar 2" below the surface. Our minimum requirement is that the 36" by 36" section be reinforced accordingly, but it is good practice to extend the rebar grid over the entire deck. Commonly, the rebar grid is used for grounding/bonding also. Bonding of the lift can usually be accomplished with a length of bare, 8 AWG solid, copper wire, connected to a piece of the rebar with an approved fitting and then connected to the grounding lug on the anchor plate. Note; this is only effective when the rebar grid itself has been bonded (attached to the pool's equipotential bonding grid with 8-AWG solid-copper wire). See NEC Article 680.26.

**CHECK YOUR LOCAL ELECTRICAL CODE: BONDING REQUIREMENTS FOR POOL EQUIPMENT. ALWAYS BOND THE UNIT PER LOCAL ELECTRICAL CODES.**

