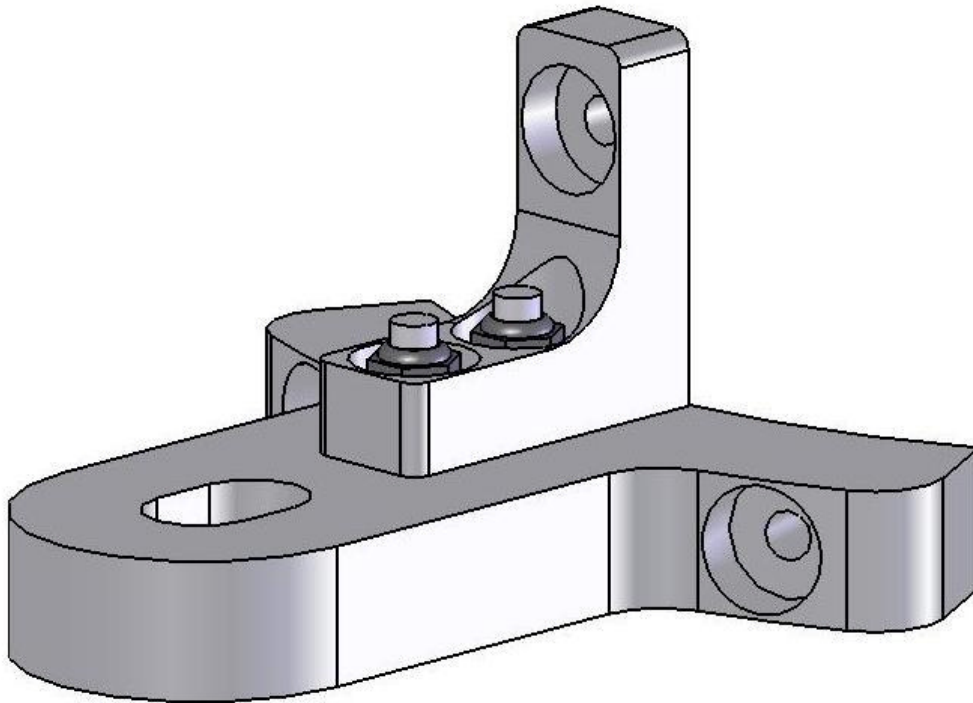




Aqua Creek Products

The Total Solution for Pool and Spa Access



SCOUT™ FIXING KIT

PART NUMBER: F-840SDS

INSTALLATION INSTRUCTIONS

MANDATORY – LEAVE THIS MANUAL WITH LIFT OWNER

- WARNING -

IMPORTANT SAFETY INSTRUCTIONS

- 1. READ AND FOLLOW ALL INSTRUCTIONS. LIFT SAFETY CAN ONLY BE ENSURED IF THE LIFT IS INSTALLED AND OPERATED PROPERLY – ACCORDING TO THESE INSTRUCTIONS.**
- 2. TO REDUCE THE RISK OF INJURY, DO NOT PERMIT CHILDREN TO USE THIS PRODUCT UNLESS THEY ARE CLOSELY SUPERVISED AT ALL TIMES.**
- 3. DO NOT PERMIT CHILDREN TO PLAY ON OR AROUND THIS PRODUCT.**
- 4. NEVER APPLY DIRECT WATER PRESSURE TO THE ELECTRONIC COMPONENTS.**
- 5. SAVE A COPY OF THESE INSTRUCTIONS IN A SAFE AND EASILY ACCESSIBLE PLACE.**

AQUA CREEK PRODUCTS

9889 GARRYMORE LANE

MISSOULA, MT 59808

1-888-687-3552

FAX: 406-549-2602

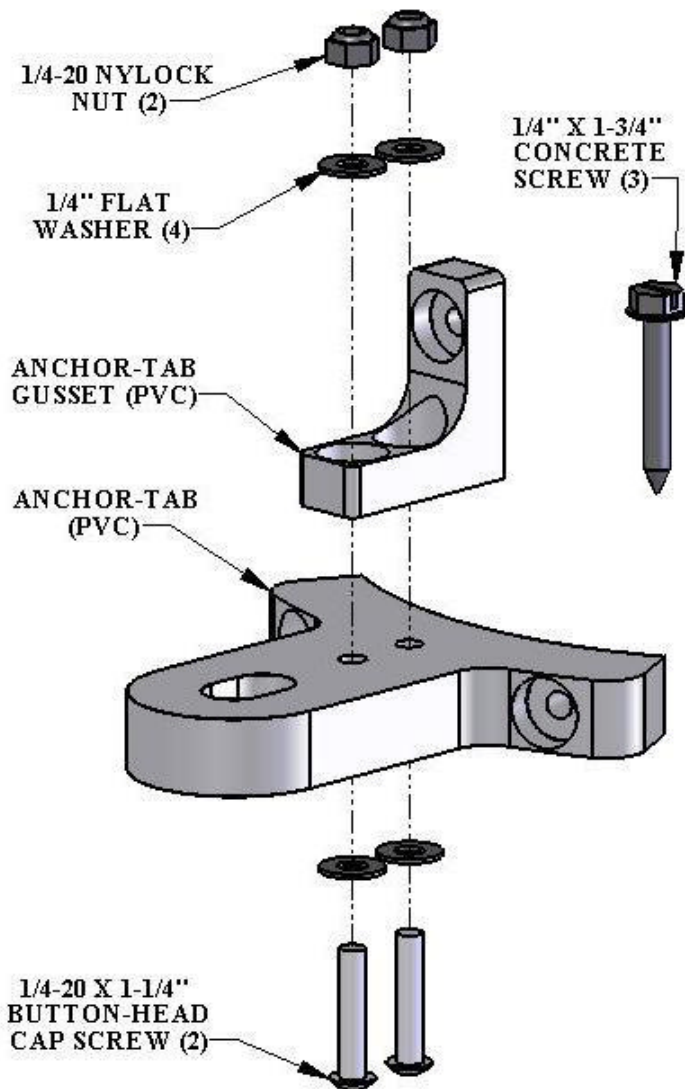
FEB 2012

THE SCOUT 2ND ANCHOR SYSTEM: FIXING KIT

The Scout 2nd Anchor System has been designed to comply with the latest ADA requirements. It has a simple but robust design, and can be retrofitted with a nominal amount of time, tools and expense. Below is a diagram showing the basic features of the 2nd Anchor System.

Note that the 2nd Anchor System has been designed to comply with the NEC requirements for bonding. The applicable section from the NEC code reads;

(5) Metal Fittings - All metal fittings within or attached to the pool structure shall be bonded. Isolated parts that are not over 100mm (4 in.) in any dimension and do not **penetrate into the pool structure more than 25mm (1 in.)** shall not require bonding.



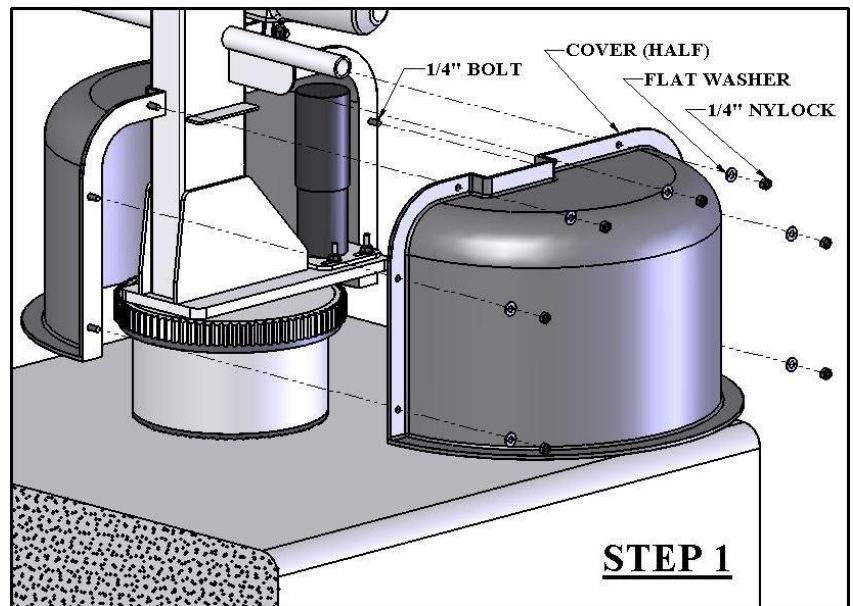
THE 2ND ANCHOR ASSEMBLY

FIXING KIT: INSTALLATION INSTRUCTIONS

NOTE: The anchor hole can be core-drilled either before or after installing the ANCHOR TAB. If you want to core-drill first use the ANCHOR TAB to mark the holes' center for drilling and go to STEP 4 (page 5) for anchor-insert installation.

STEP 1:

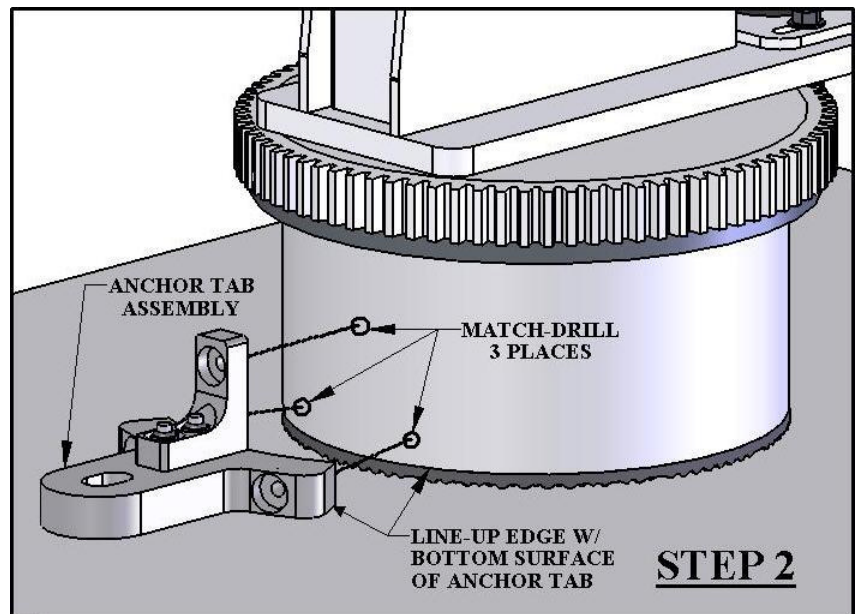
Remove the plastic cover by first removing the seven (7) 1/4" bolts and nuts from the flange with 7/16" tools (socket & or wrench). Set the cover and hardware aside.



STEP 2:

Place the ANCHOR TAB assembly in position flush with the bottom edge of the base tube. Match-drill three (3) holes with the provided masonry drill-bit. Drill to a depth of at least 2 inches.

HINT: Use a shim to hold the ANCHOR TAB about 1/4" to 3/8" above the deck surface and match-drill the middle-top hole first. (See photos)



USE A SHIM UNDER THE TAB



MATCH-DRILL CENTER HOLE



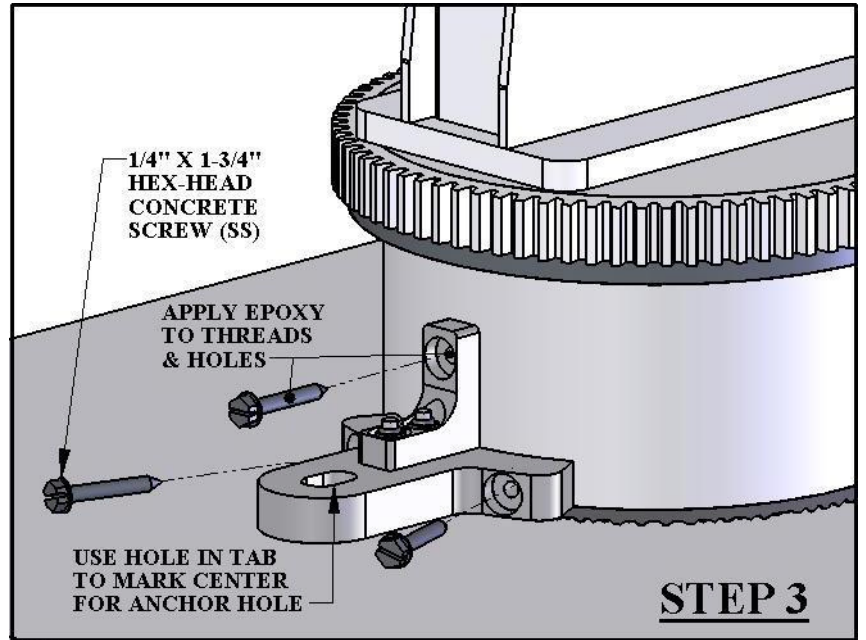
MATCH-DRILL OTHER HOLES (CENTER BOLT INSTALLED)

STEP 3:

Check the holes by dry-fitting the supplied 1/4" x 1-3/4" stainless-steel concrete screws to make sure the holes are in the proper locations. Apply *epoxy to the holes (in the base) and to each screw (optional) and install the concrete screws. Make sure all three screws are tight.

STEP 3-A:

Next, mark the center of the hole for the anchor insert. The ANCHOR TAB has a slotted hole to allow for some error. Center-to-center distance is 7-1/2".



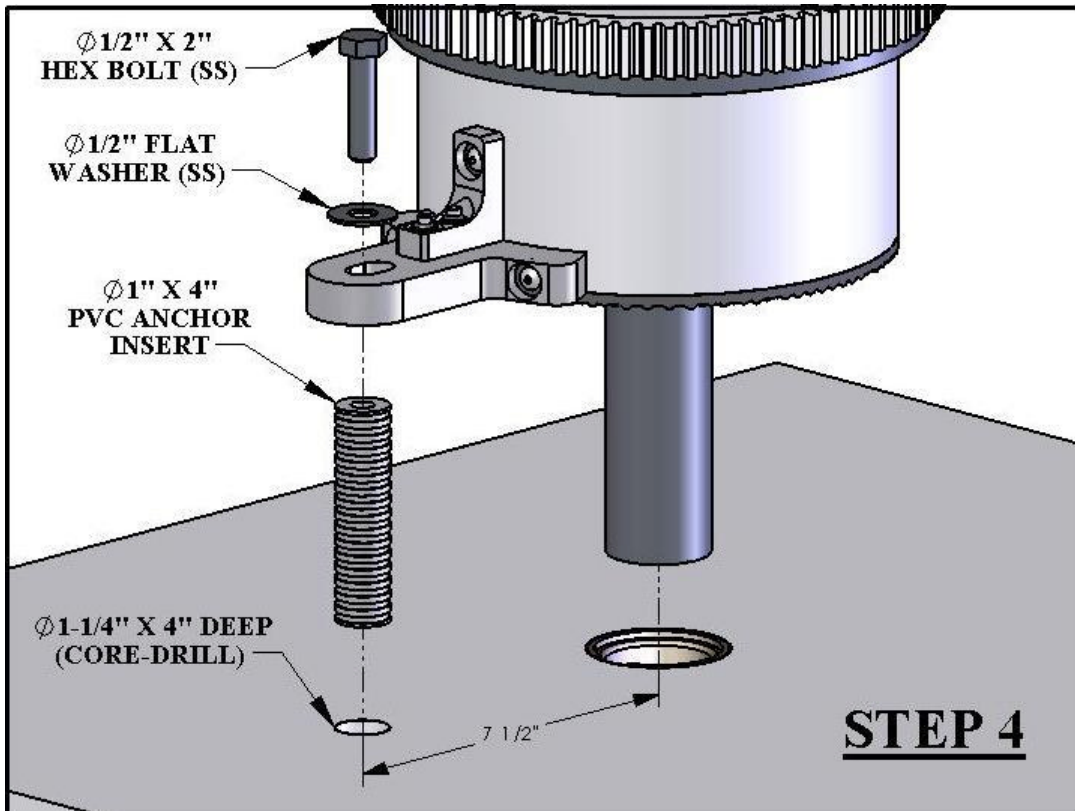
**INSTALL THE CONCRETE SCREWS
(5/16" DRIVER OR SLOT SCREWDRIVER)**

*** Use HILTI HIT HY-150 or SIMPSON ET22 StrongTie anchor adhesive or equivalent.**

STEP 4:

Remove the lift from the anchor and check to make sure that the marked center is 7-1/2" from the center of the main anchor-sleeve. With a 1-1/4" diameter core-drill bit and a core-drill rig drill a 1-1/4" x 4" deep hole for the anchor insert. Remove the core and clean out the hole. Make sure the hole is dry before adding epoxy. Fill the hole 1/2 full with *epoxy and install the PVC ANCHOR insert flush with the deck surface. **Allow 24 hours for the epoxy to cure before installing the lift**

Install the lift and secure it down with a 1/2" x 2" hex bolt and flat washer. Install the bolt by hand first and then tighten with a 3/4" wrench or socket. Do not over-tighten! If the tab is bent down it's too tight. Replace the cover and the hardware from STEP 1.



INSTALL BOLT & THREAD BY HAND



**THEN TIGHTEN WITH 3/4" WRENCH
TIGHTEN UNTIL BOLT IS FLUSH
DO NOT OVERTIGHTEN!**

* Use **HILTI HIT HY-150** or **SIMPSON ET22 StrongTie** anchor adhesive or equivalent.