



THE LEADERS IN RECREATION, FITNESS, AND ABILITY!

9889 Garrymore Ln  
Missoula, MT 59808

888-687-3552 | +1-406-549-0769

www.aquacreek.com

# Electronic Conversion Kit

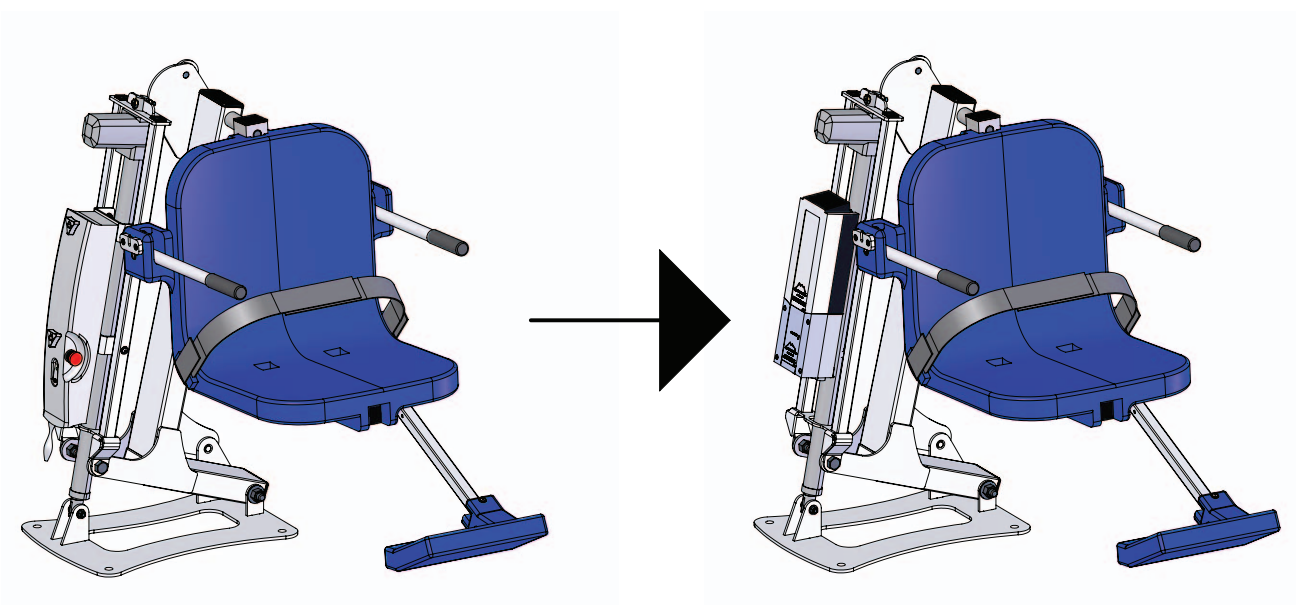
**PART #: F-409CBK**

**MANDATORY**

LEAVE THIS MANUAL WITH LIFT OWNER

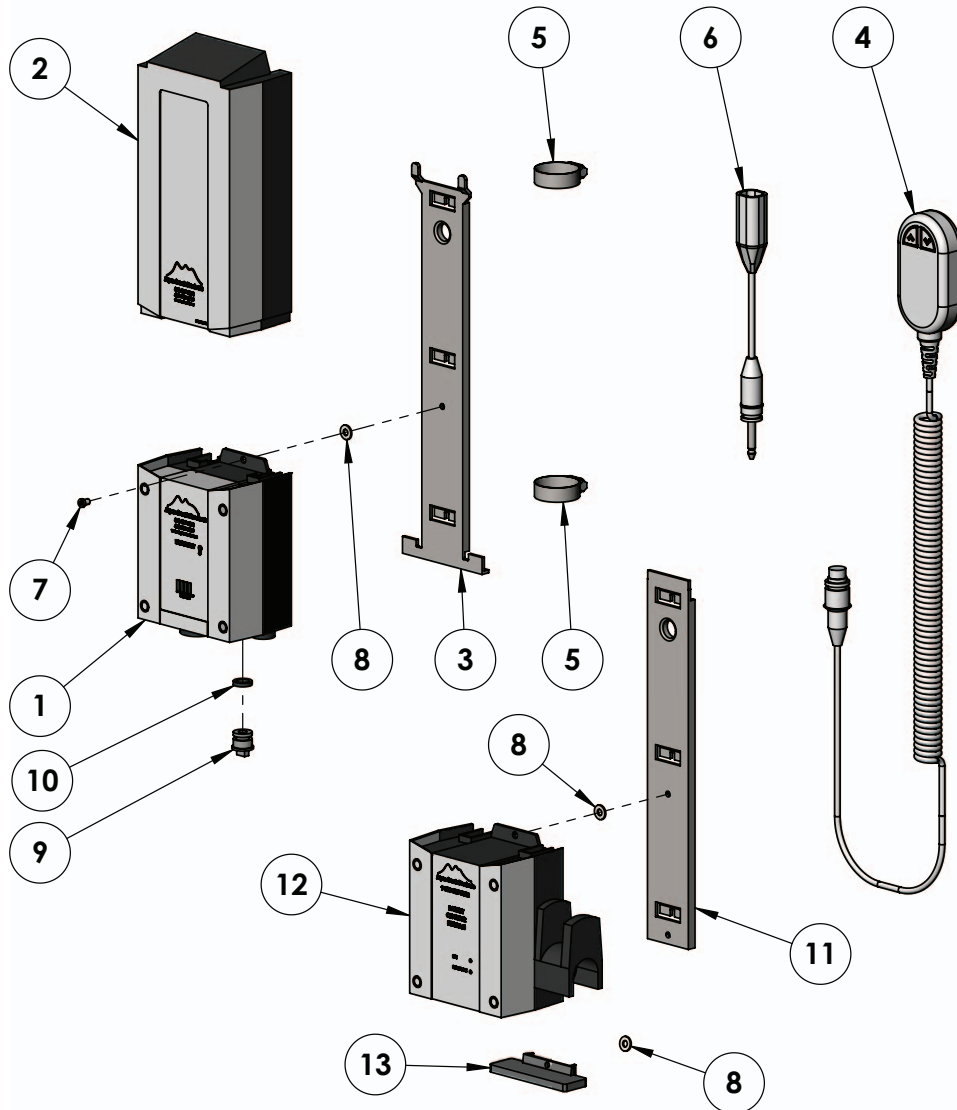
Read and follow all instructions  
Lift safety can only be ensured if the lift is installed  
and operated according to these instructions.

- NEVER permit children to play on or around the lift
- Do not allow children to use the lift without adult supervision
- NEVER apply direct water pressure to the electronics
- NEVER use the lift with a dry pool
- For safety reasons, NEVER swim alone

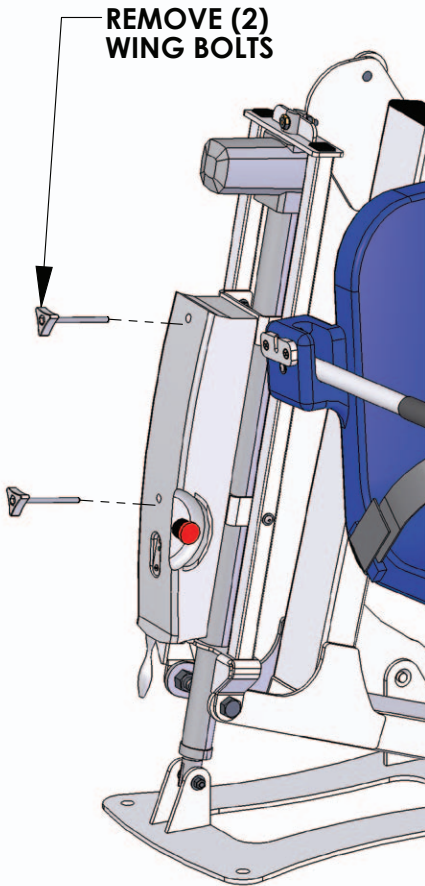


# Electronic Conversion Kit Contents

ITEM #	QTY	PART #	DESCRIPTION
1	1	CBJ2-U033-00	CONTROL BOX, LINAK
2	1	BAJ1-U026-00	BATTERY, 24V, LINAK
3	1	MBJ2-01	BRACKET, CONTROL BOX MOUNTING
4	1	HB00-U017-00	REMOTE, LINAK, 2-BUTTON
5	2	HOSE CLAMP, 1 3/4 SS	HOSE CLAMP, 1 3/4" SS
6	1	MINIFIT PLUG	MINIFIT (FEMALE) TO 1/4 PLUG ADAPTER
7	1	M5 LPCS	CONTROL BOX SCREW
8	3	WF 10	WASHER, FALT, #10 SAE, 316 SS
9	1	00912030-A	CONTROL BOX PLUG
10	1	0007007	O-RING FOR CONTROL BOX PLUG
11	1	MBJ3-01	BRACKET, CHARGER
12	1	CHJ2-U009-00	CHARGER, 24V BATTERIES, LINAK
13	1	00940035	BOTTOM COVER, CHARGER

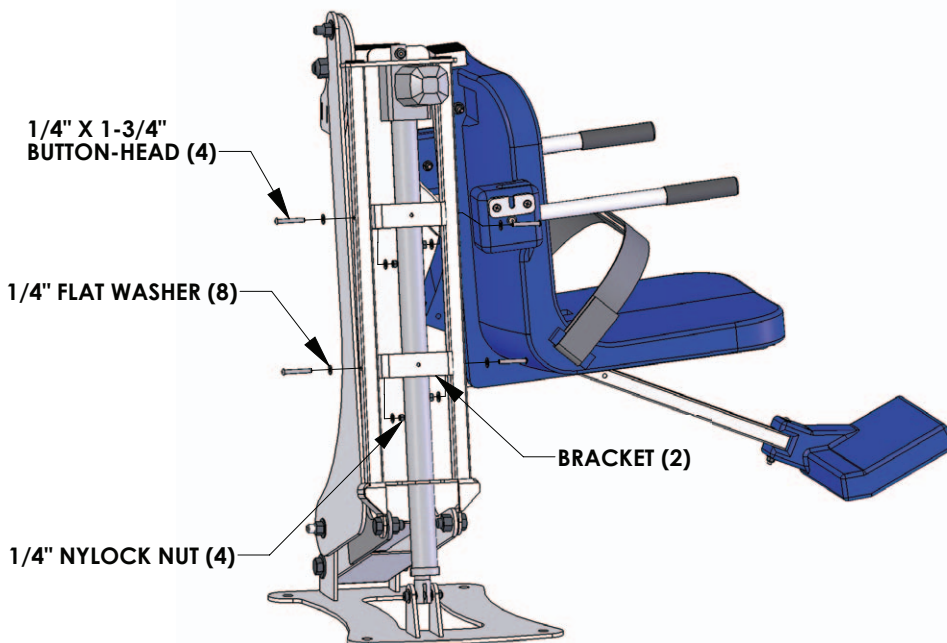
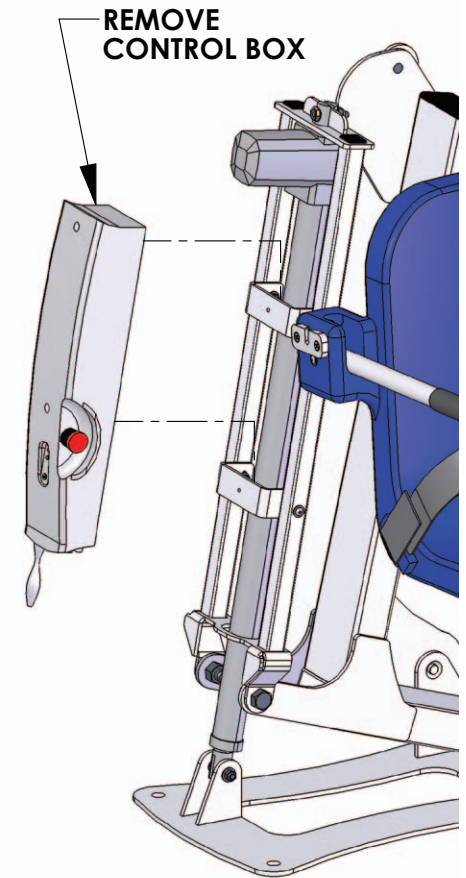


# One Piece Control Box Removal



Remove the two (2) wing bolts connecting the control box to the bracket. Be sure to hold the control box as you remove the bolts to keep it from falling. See figure to the left.

Remove the control box from the bracket and set aside. See figure to the right.



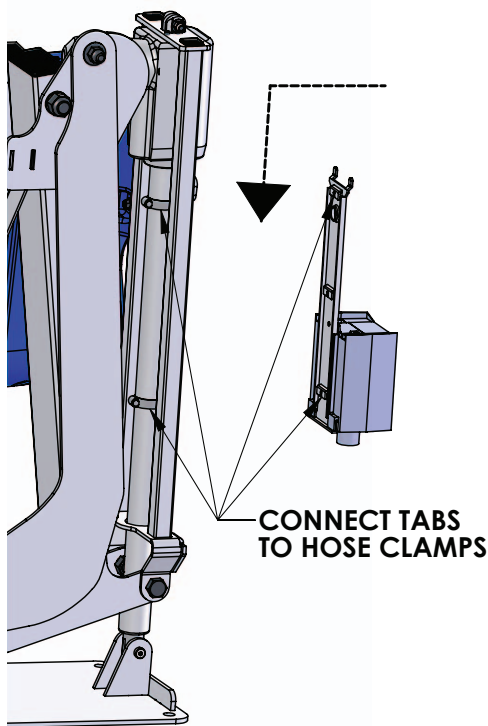
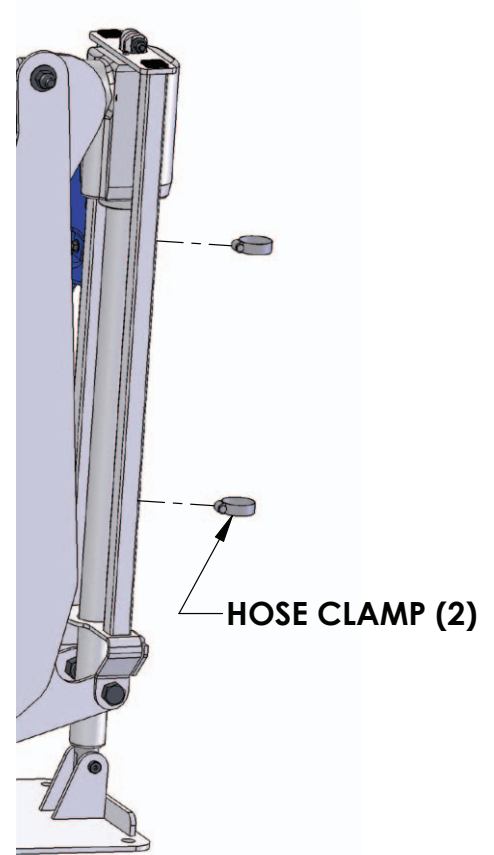
**TOOLS REQUIRED:**  
7/16" WRENCH      5/32" HEX KEY

Remove the four (4) 1/4" button head bolts, eight (8) 1/4" flat washers, four (4) 1/4" nylock nuts and two (2) brackets. Use a 7/16" wrench and a 5/32" hex key (allen wrench) to remove the 1/4" hardware. See figure to the left.

# Two Piece Control Box Installation

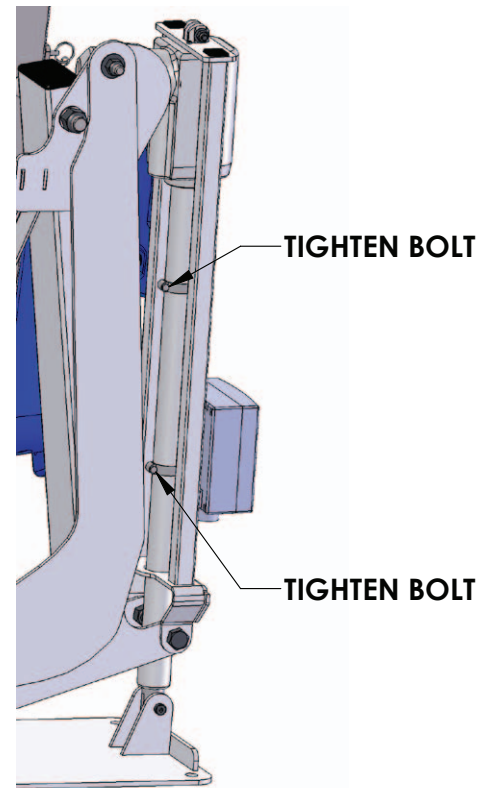
**TOOLS REQUIRED:  
FLAT BLADE SCREWDRIVER**

Connect the two (2) hose clamps to the actuator shaft. To do this, use a flat blade screwdriver to open the hose clamps. Put the opened hose clamp around the actuator shaft and close the clamp. Secure the clamp using the flat blade screwdriver but leave loose. See figure to the right.



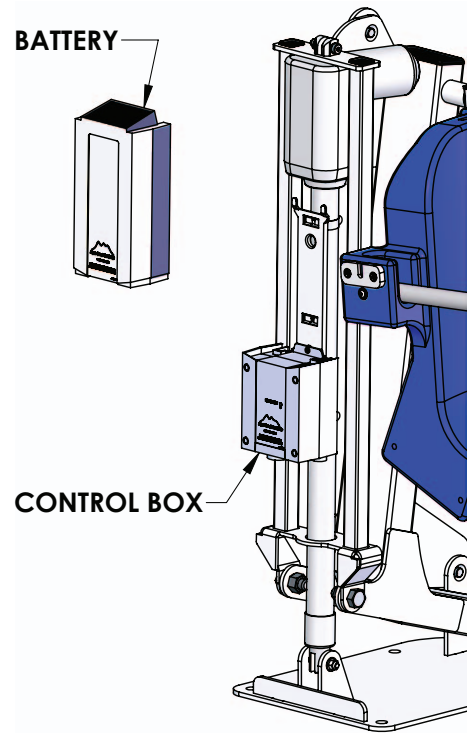
With the Linak two piece control box installed, slide the bracket over and down onto the two hose clamps. Be sure to use the top and bottom tabs of the bracket, **not** the middle tab. See figure to the left.

Using the flat blade screwdriver, tighten the bolts on the hose clamps to secure control box in place. See figure to the right.

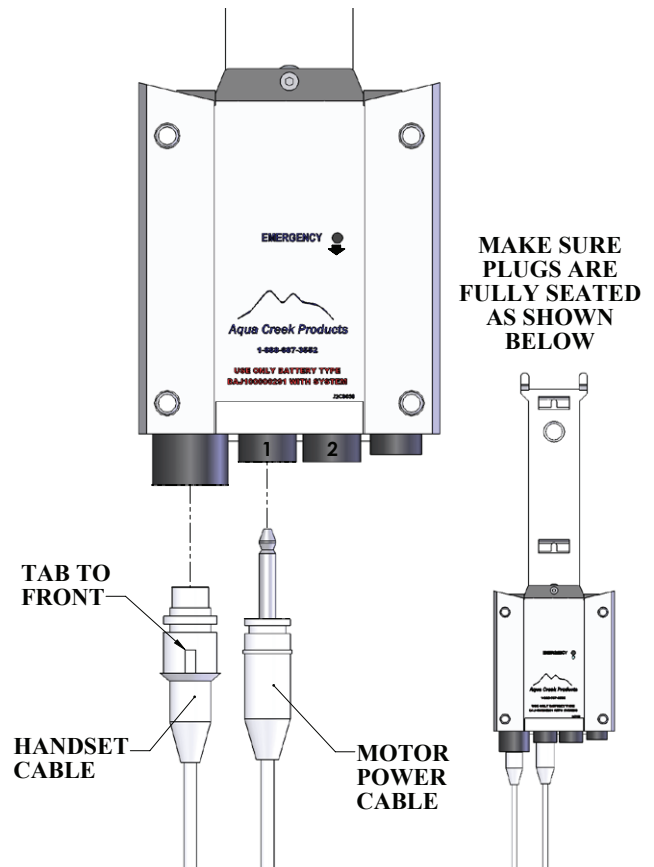


# Linak Battery and Cables Installation

Attach the battery to the control box and the control box bracket. You should hear a “click” when the battery is correctly mounted to the bracket. See figure to the right.



Once the battery has been connected and plugged into the control box, connect the handset cable and the motor power cable (if needed) in the first two slots of the control box. See figure to the right.



# Basic Troubleshooting

**Problem:** The lift won't move.

## Solution:

### 1. Make sure the battery is properly seated:

You should hear a click when the battery is properly seated on the control box or charger.



**NOT Properly Attached:**  
Note: the white bracket is in front of the silver clip, which will not allow for an electrical connection



**Properly Attached:**  
Note: the white bracket is behind the silver clip, holding it securely to allow for an electrical connection

### 2. Make sure the cords are properly plugged in:



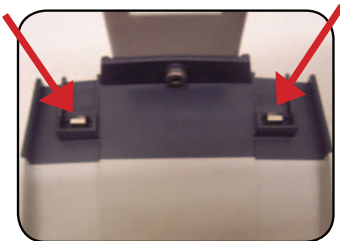
**NOT Properly Inserted:**  
The cord plug is flush with or sticking out of the outlet



**Properly Inserted:**  
The cord plug is recessed into the outlet

Check the ends of the cords for corrosion or damage. The cord plugs should be recessed into the outlet. You should feel them pop into place when they are correctly inserted.

### 3. Check the contact points:



Make sure the contact points of the control box and the battery are not damaged or corroded. If there is corrosion clean with Scotch-Brite™ pad. Put some dielectric grease on the contact points before reattaching the battery.

### 4. Make sure the battery is fully charged:



The Charger is ON when the green light is glowing  
The Battery is CHARGING when the orange light is glowing  
When the Battery is charged the orange light will stop glowing

**Problem:** The lift stopped moving over the water and is stuck.

## Solution:

### 1. Press the emergency button

Use a pen or pencil tip and stick it into the emergency button on the front of the control box to retract the lift.

Note: the lift will not retract if the battery is not fully charged or if the control box is not working. The emergency button only overrides the remote handset.



### FOR TROUBLESHOOTING ASSISTANCE



## **Aqua Creek Products, LLC - Limited 1 Year Warranty:**

### **Electronic Control Upgrade Kits**

*(Aqua Creek Product Number: F-409CBK, F-409CBKV, F-830)*

Aqua Creek Products Wheelchair Attachments have a **Limited 1-year Warranty**, not including wear components. Aqua Creek Products, LLC (a.k.a. Aqua Creek) warrants to the original end user that all non-wear components when properly assembled in accordance with assembly and installation instructions, and properly used and maintained, shall be free from defects in material and workmanship for a period of **one (1) year** from the date of original purchase, provided that Aqua Creek receives prompt notice in writing of any defect or failure and satisfactory proof thereof.

This warranty specifically excludes reimbursement for labor to remove, repair, or install the product and any freight charges. These warranties do not cover any damages due to accident, force majeure, act of nature, misuse, abuse, negligence or failure to properly maintain any products, or normal wear and tear from day to day operations. In the event that any products are altered, repaired, or improperly installed or improperly used by anyone without the prior written approval by Aqua Creek, all warranties are void. **IMPORTANT: AMOUNT OF WEIGHT PLACED ON PRODUCT SHALL NOT EXCEED ITS RATED CAPACITY.** It is the responsibility of the product owner to verify the weight of the patron for warranty claim purposes and to ensure that the product is not overloaded. Non-payment for product to Aqua Creek may void warranty

Excluded wear components include but are not limited to; safety straps and buckles as well as other components that do wear with normal daily use.

To initiate a warranty claim, the owner of an Aqua Creek product must provide the place of purchase, in writing, with a full description of the product, its serial number, the dates of purchase and installation, and the exact nature of the defect. Within thirty (30) days after receipt of a written warranty claim by Aqua Creek, and barring any unforeseen delays, the place of purchase will be notified of Aqua Creek's decision regarding the claim.

If requested by Aqua Creek, any defective product must be returned, freight prepaid by customer, to Aqua Creek's designated factory location or duly appointed distributor for inspection and/or repair. Aqua Creek will, at its option, repair or replace the failed or defective item, and deliver the repaired product or replacement to the customer. All freight charges are the responsibility of the customer. Products returned to Aqua Creek for which Aqua Creek provides replacement under this limited warranty shall become the property of Aqua Creek. A new warranty period shall **NOT** be established for the repaired or replaced products. Such products shall remain under warranty only for the remainder of the original warranty period on the original products purchased.

This written limited warranty constitutes the final, complete and exclusive statement of warranty terms. No person or organization is authorized to make any other specific or implied warranties or representations on behalf of Aqua Creek.

**THE WARRANTIES SET FORTH HEREIN ARE IN LIEU OF ALL OTHER WARRANTIES, EXPRESSED OR IMPLIED, WHICH ARE HEREBY DISCLAIMED AND EXCLUDED, INCLUDING WITHOUT LIMITATION ANY WARRANTY OF MERCHANTABILITY OR FITNESS FOR A PARTICULAR PURPOSE OR USE.**

**THE SOLE AND EXCLUSIVE REMEDIES FOR BREACH OF ANY AND ALL WARRANTIES WITH RESPECT TO THE PRODUCTS SHALL BE LIMITED TO REPAIR OR REPLACEMENT AT AQUA CREEK'S DESIGNATED FACTORY LOCATION, OR DULY APPOINTED DISTRIBUTOR, OR IN PLACE AT AQUA CREEK'S OPTION. IN NO EVENT SHALL AQUA CREEK'S LIABILITY EXCEED THE ENTIRE AMOUNT PAID TO AQUA CREEK BY THE ORIGINAL PURCHASER FOR THE FAILED OR DEFECTIVE PRODUCT.**

**IN NO EVENT SHALL AQUA CREEK PRODUCTS, LLC BE LIABLE FOR ANY INCIDENTAL, CONSEQUENTIAL, SPECIAL, INDIRECT, PUNITIVE OR EXEMPLARY DAMAGES OR LOST PROFITS FROM ANY BREACH OF THIS LIMITED WARRANTY OR OTHERWISE.**

**THIS WARRANTY GIVES YOU SPECIFIC LEGAL RIGHTS AND YOU MAY ALSO HAVE OTHER RIGHTS, WHICH MAY VARY FROM STATE TO STATE. SOME STATES DO NOT ALLOW THE EXCLUSION OR LIMITATION OF INCIDENTAL, SPECIAL OR CONSEQUENTIAL DAMAGES, SO SOME OF THE ABOVE LIMITATIONS OR EXCLUSIONS MAY NOT APPLY TO YOU.**

**Aqua Creek Products, LLC  
9889 Garrymore Lane  
Missoula, MT 59808  
Toll Free: (888) 687-3552  
Local/Intnl: (406) 549-0769  
www.aquacreek.com**