

32" CHANNEL DRAIN PINHOLE ANTI-ENTRAPMENT SUCTION OUTLET COVER WITH MUD FRAME

DRAIN COVERS

NSF Certified to NSF/ANSI/CAN 50 ANSI/APSP/ICC-16 2017

Open Area
13.46 in²

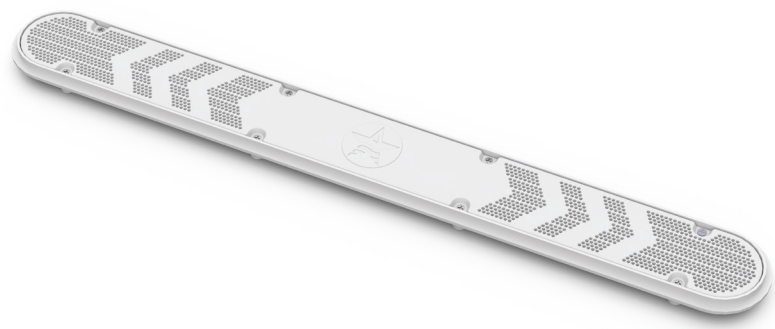
For SOFA Specific Flow Ratings and specifications please scan QR code or visit www.aquastarpoolproducts.com/flowcode



FEATURES

- Certified, Listed, and Labeled in conformance with APSP/ANSI/ICC-16 2017 and NSF/ANSI/CAN 50 standards
- Manufactured from superior UV-resistant engineered polymers
- Includes disposable "dog bone" supports to retain shape during all phases of construction
- #316 stainless steel screws
- Online product support including downloadable CAD files, General Certificate of Conformity, third-party certificate, installation instructions and more
- Replace drain cover every five years from the date of installation
- 12 per case

Unblockable!



Optional Self-Contained Hydrostatic Valve
Part # HVCxxx
See page 90

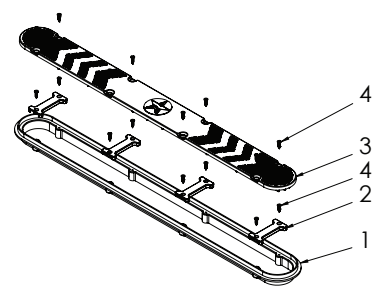
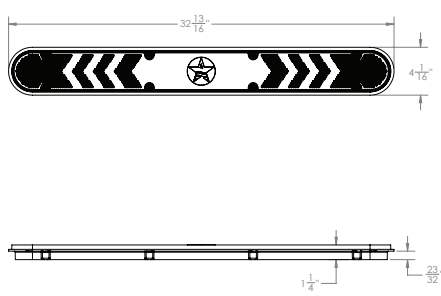
For field-fabricated sump (concrete pools)
Part # 32CDPHFRxxx

- STANDARD COLORS**
- 32CDPHFR101 – White
 - 32CDPHFR102 – Black
 - 32CDPHFR103 – Light Gray
 - 32CDPHFR105 – Dark Gray

Also available mud frame only, p/n 32CDFRxxx
4 per case

Also available cover only without sump/frame, p/n 32CDPHNFxxx
40 per case

VGBA 2017 Compliant



- 32" Channel Drain Frame
- 32" Channel Drain Frame Support "Dog Bones", Qty 4
- 32" Channel Drain "Pinhole" Cover
- 10 x 3/4" Flat Head Phillips, 316 SS, Qty 16

Dog Bones and Screws to be Removed After Gunite/Plaster Application