

32" CHANNEL DRAIN ANTI-ENTRAPMENT SUCTION OUTLET COVER AND FRAME



Certified to
NSF/ANSI/CAN 50
ANSI/APSP/ICC-16 2017

Open Area
22.6 in²

For SOFA Specific Flow Ratings and
specifications please scan QR code or visit
www.aquastarpoolproducts.com/flowcode



FEATURES

Certified, Listed, and Labeled in conformance with APSP/ANSI/ICC-16 2017 and NSF/ANSI/CAN 50 standards

Manufactured from superior UV-resistant engineered polymers

Includes disposable "dog bone" supports to retain shape during all phases of construction

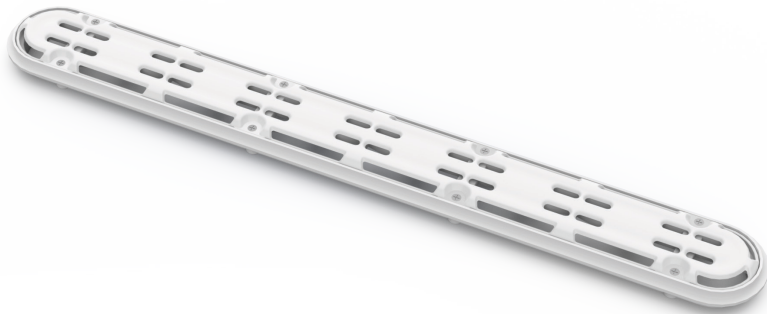
#316 stainless steel screws

Online product support including downloadable CAD files, General Certificate of Conformity, third-party certificate, installation instructions and more

Replace drain cover every five years from the date of installation

12 per case

Unblockable!



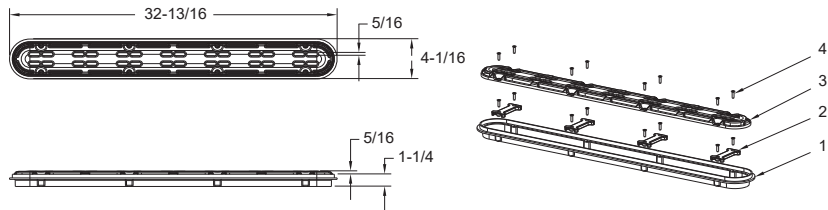
For field-fabricated sump (concrete pools)
Part # 32CDAVFRxxx

STANDARD COLORS

- 32CDAVFR101 – White
- 32CDAVFR102 – Black
- 32CDAVFR103 – Light Gray
- 32CDAVFR105 – Dark Gray

Also available as sump only,
p/n 32CDPxxx
4 per case

Also available cover only without
sump/frame, p/n 32DAVNFxxx
40 per case



1. 32" Channel Drain Frame
2. 32" Channel Drain Frame Support "Dog Bones," Qty 4
3. 32" Channel Drain Anti-Entrapment Cover
4. 10 x 3/4" Flat Head Phillips, 316 SS, Qty 16
Dog Bones And Screws To Be Removed After Gunite/Plaster Application

P 877-768-2717 F 877-276-POOL Outside the US: P +1-949-336-1940 F +1-949-336-1940
info@aquastarpoolproducts.com www.aquastarpoolproducts.com