



VGBA-2017 PRODUCT SPECIFICATIONS

Suction Outlet Fitting Assembly (SOFA) VGBA-2017 Flow Ratings, Sump Dimensions, Sump Flow Path Zone, and Head Loss Curves



Certified to
NSF/ANSI/CAN 50
ANSI/APSP/ICC 16 - 2017

DIRECTIONS: Please follow the SOFA specific flow rates, sump specifications, and flow path zone information below. The installation must conform to these minimum/maximum requirements including the SOFA dimension defined in Figure 1. The flow path zone is defined by dimensions A through E. The installed sump may be manufactured or field-built and it may be larger/deeper than Figure 1. Please write the Cover Model Number, orientation, and SOFA Model Flow Rating on the *VGBA DRAIN COVER IDENTIFICATION INFORMATION* label that comes with each AquaStar Pool Products, Inc. drain cover.

Cover Model Number:
32CDAVFRxxx

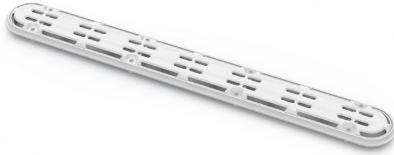
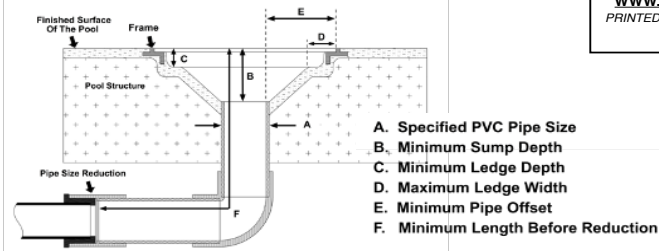


FIGURE 1 – SOFA MODEL & FLOW PATH



FOR MOST CURRENT INFORMATION
SCAN THE QR CODE OR VISIT
WWW.AQUASTARPOOLPRODUCTS.COM/FLOWCODE
PRINTED DOCUMENTS MAY NOT HAVE THE MOST CURRENT FLOW RATINGS OR INSTALLATION OPTIONS.



SOFA Model No.	Pipe Size (Nominal)	Pipe Depth (Minimum)	Orientation (Wall / Floor)	Flow Rating (GPM)	Head Loss Curve
32CDAV-32f_A-2.5x2b_B2.98_C0.95_D0.2_E0.475_F16	2.5" x 2 (b)	2.98"	Floor (f)	90	A
32CDAV-32f_A-2.5x3b_B2.98_C0.95_D0.2_E0.475_F16	2.5" x 3 (b)	2.98"	Floor (f)	150	B
32CDAV-32w_A-2x2b_B2.98_C0.95_D0.2_E0.475_F16	2" x 2 (b)	2.98"	Wall (w)	136	B

Note 1: "SOFA Model No" nomenclature; bottom pipe = (b), side pipe = (s). See Fig 1 for capital letters A through E

Note 2: Head loss inHg is measured 16 to 24 inches from the finish surface of the pool. Reference Fig 1 dimension F.

